

Glomac Design and Build

Unit 24 Phoenix Business Park, Avenue Road, Aston, Birmingham UK| B7 4NU
Tel: 0121 359 3848 Company Reg No: 08283353 Trading Co. CT88.Ltd

Ref.: 15/01848/F

Proposal: Relocation of the kitchen extraction flue from the back to the side wall

Address: Mr Rice 47F Broad Street Banbury

Date: 12-01-2016

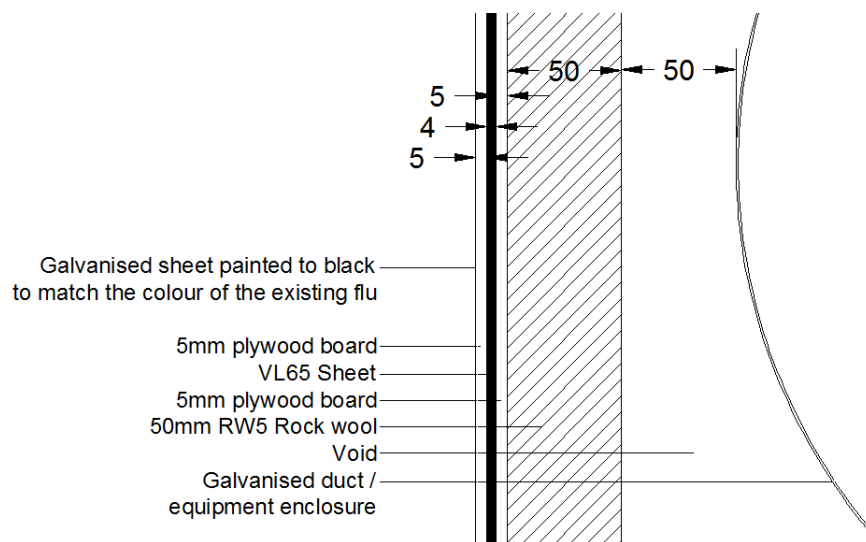
In response to the further queries from Bob Neville, I hope the following information is useful to above application.

1. Acoustic Enclosure

According to the noise assessment report from Blue Acoustics, the enclosure will be constructed with

- 5mm plywood – 4mm VL65 sheet – 5mm plywood sandwich, the acoustic performance of the VL65 is described in the specification 'VL65 specification.pdf'
- Internally lined throughout with 50mm RW5 Rock wool
- A minimum gap of 50mm between the flue assembly and internal rock wool lining
- Galvanised sheet as the outer skin to give a better structure to carry the weight of the enclosure. It will be painted to black to match the original colour of the existing flue.

Enclosure Cross Section



Glomac Design and Build

Unit 24 Phoenix Business Park, Avenue Road, Aston, Birmingham UK| B7 4NU
Tel: 0121 359 3848 Company Reg No: 08283353 Trading Co. CT88.Ltd

2. Odour control

Since it has no odour filtration device installed in the existing system, it therefore produce excessive cooking smell to the environment.

Based on the existing flow rate $1.8\text{m}^3/\text{s}$, the ACE type ACD Carbon filter is proposed to be used as odour filter.

Carbon filter – ACE type ACD , carbon filter housed in a galvanised box, will be installed in-line with the extraction ducting and can filter out most of the odour generated from cooking. It is mostly adopted by the restaurant for filtering out the cooking odour. Please see the specification 'ACE Carbon Filters.pdf'.

For Chinese takeaway, it require 0.2 second contact time. According to the factory specification and consultation from Craig Harwood from ACE, it require 1 off prefilter box and 2 off 600x600 filter enclosure containing total 24 off carbon filter panels.

3. Opening times for the business and times when the extract system is in operation

- 5:00pm-11:00pm

4. Average number of meals that are prepared each day

- 60 meals each day

5. Details/manufacturer's specifications for all filters used in the extract system

- Grease filter – The system is using standard baffle filter for grease filtration and was custom made with the canopy to the requirement. It is the same specification as Westbury Filtermation baffle filter, please see specification document 'Westbury Filtermation Baffle-Filter.pdf'.
- Carbon filter – ACE type ACD, please see the specification document 'ACE filter system specification.pdf'.

6. Schedule of maintenance for the extract system including details for:

- a. cleaning of washable grease filters;
 - daily
- b. frequency of inspection and replacement of all filters (grease filters, pre-filters and carbon filters where proposed);
 - Grease filter – daily inspection and cleaning. Replace when required as it is made of stainless steel.

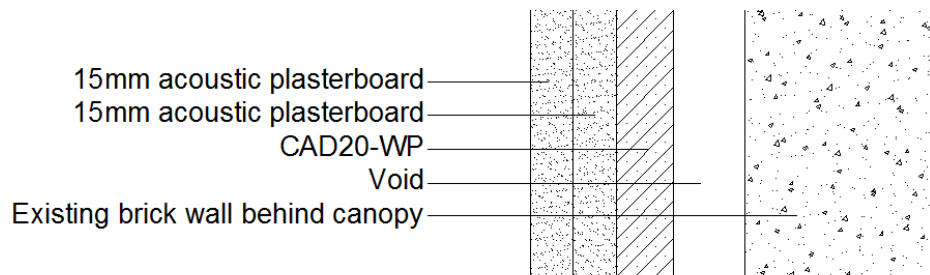
Glomac Design and Build

Unit 24 Phoenix Business Park, Avenue Road, Aston, Birmingham UK| B7 4NU
Tel: 0121 359 3848 Company Reg No: 08283353 Trading Co. CT88.Ltd

- Pre-filter – once a week inspection and approx. once every two week replacement
 - Carbon filter – once every two week inspection and approx. once every three month replacement.
- c. inspection and servicing of fans; and
- Inspection: once every 6 month
 - Cleaning and inspection: once every year
- d. if schedule is not based on manufacturer’s instructions include the reasons why.
- All schedule are based on standard practice and manufacturer’s specification.

7. Further reduce noise

According to the noise assessment report from Blue Acoustics, the enclosure can be further reduced by relocating the canopy to allow space from the wall in order to install CAD20-WP panels with 2x 15mm acoustic plasterboard layers to the entire wall. Please check the performance in the document ‘CAD20-WP.pdf’.



Blue Acoustics also recommend to use wooden cooking implements where possible including chopping boards in order to reduce noise transmission through the kitchen wall to the downstairs living areas in 19 Newline Place.

Bill Tang

Project Manager