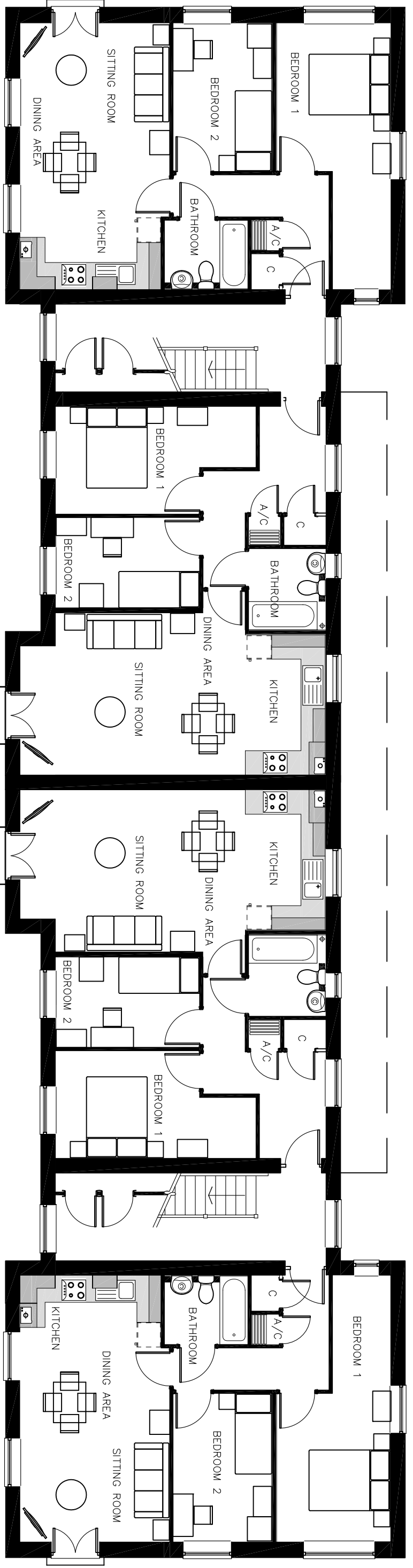


Ground Floor Plan



First Floor Plan

Notes:

Use written dimensions only.
Any discrepancy or suggested modification is to be reported to Bovis Homes Ltd. This drawing is the copyright of Bovis Homes Ltd.

Rev:

A. Floor plan and drawing title changed as both SF215H and SF215A have now been combined into one building. SM
B. Building increased to 3 floors. Accommodating extra 4x 1 bedroom flats, bin store and cycle storage. Stone sill added around whole building. Some stone heads removed. Balconies on ground floor removed. SM

Project: Longford Park, Banbury Phase 3

Drawing Title: SF215 — Floor Plans 1/2 (B)

Drawn By: SM

Checked: NG Date: 04/15

Scale: 1:100@A3

