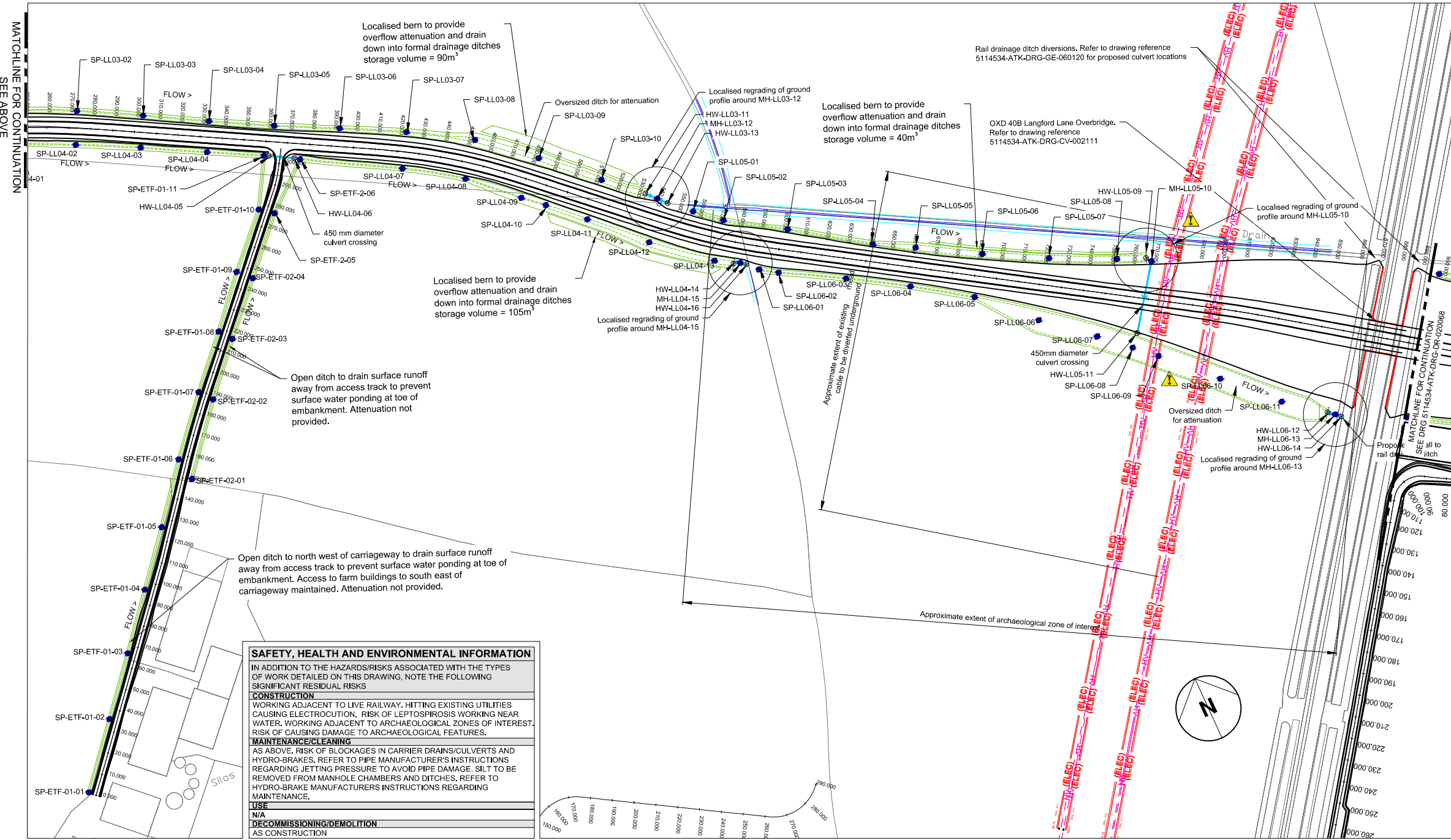


- Legend/Notes
1. ALL DIMENSIONS ARE IN MILLIMETRES UNLESS OTHERWISE STATED. ALL LEVELS ARE IN METRES ABOVE PROJECT DATUM. ALL COORDINATES ARE BASED ON "OB812 SNAKE GRID".
  2. THIS DRAWING IS NOT TO BE SCALED.
  3. REFER TO DRAWING SERIES 5114534-ATK-DRG-DR-023325-023332 FOR THE LOCATION AND DETAILS OF ALL MANHOLE CHAMBERS, PIPES AND DITCHES, INCLUDING SETTING OUT POINTS ALONG DITCHES.
  4. ALL DRAWINGS SHALL BE READ IN CONJUNCTION WITH THE SPECIFICATION 5114534-ATK-DRE-SPC-020001.
  5. REFER TO 5114534-ATK-DRG-DR-020100 AND 020101 FOR CONSTRUCTION DETAILS OF DITCHES AND FILTER DRAINS.
  6. FOR DETAILS OF EARTHWORKS (EXCLUDING DITCHES) REFER TO EARTHWORKS DRAWINGS REF 5114534-ATK-DRG-DR-060130 - 060132.
  7. TOPOGRAPHICAL SURVEY FROM 5114534-ATK-MOD-SU-000001 TRACK ALIGNMENT FROM 5114534-ATK-MOD-TR-000052.
  8. THE SERVICE INFORMATION SHOWN ON THESE DRAWINGS HAS BEEN COLLATED FROM SERVICE RETURNS DATED DECEMBER 2013 AND SURVEY SITE INVESTIGATIONS BY OTHERS IN RELATION TO THE EAST WEST RAIL CORRIDOR. NO LIABILITY OF ANY KIND WHATSOEVER IS ACCEPTED BY ATKINS LIMITED, ITS SERVANT OR AGENTS, FOR ANY ERROR OR OMISSION IN RESPECT OF INFORMATION CONTAINED ON THE PLANS PROVIDED. THIS PLAN IS A COMPILATION OF A NUMBER OF PLANS PROVIDED AT DIFFERENT SCALES AND IS INTENDED TO PROVIDE A GRAPHICAL REPRESENTATION OF SERVICES WITHIN THE AREA AND IT IS IMPOSSIBLE TO GUARANTEE ACCURACY. IN ADDITION IT IS A COMPILATION OF INFORMATION SUPPLIED BY UTILITY COMPANIES WHO DO NOT GUARANTEE THE ACCURACY OF THE INFORMATION. THE UNDERGROUND SERVICES MUST BE VERIFIED AND ESTABLISHED ON SITE BEFORE ANY EXCAVATION IS CARRIED OUT. IT IS THE RESPONSIBILITY OF ANY ON SITE CONTRACTOR TO IDENTIFY AND LOCATE ANY UTILITY PLANT PRIOR TO DEVELOPMENT WORK GOING AHEAD.
  9. NO FENCELINE OR LAND BOUNDARIES ARE SHOWN. REFER TO HIGHWAYS DRAWINGS 5114534-ATK-DRG-HW-010101 TO 010103.
  10. CULVERTS OF EXISTING DITCHES THAT ARE TO BE ABANDONED OR DIVERTED WILL REQUIRE PERMANENT + TEMPORARY WORKS CONSENT FROM THE LEAD LOCAL FLOOD AUTHORITY (OXFORDSHIRE COUNTY COUNCIL).
  11. DRAWING TO BE READ IN CONJUNCTION WITH DRAWING 5114534-ATK-DRG-DR-020068.



- Legend/Notes
- FLOW > SP-LL01 PROPOSED SURFACE WATER DITCH
  - HW-LL01 PROPOSED HEADWALL AT START/END OF DITCH
  - FLOW < SP-LL01 PROPOSED CULVERT
  - MH-LL01-02 PROPOSED SURFACE WATER CARRIER DRAIN WITH MANHOLE CHAMBER AND FLOW CONTROL
- HIGH RISK UTILITY SERVICES
- PROPOSED WORKS IN VICINITY OF HV CABLES
  - BT (OVERHEAD)
  - EHV MAIN (OVERHEAD)
  - HV MAIN (OVERHEAD)
  - FOUL WATER SEWER
  - VIRGIN MEDIA
  - WATER MAIN

Rev	Date	Description of Revisions	Drawn	Chkd	Appr
C02	29/05/19	DRAINAGE ALIGNMENTS REVISED	BW	PL	AR
B02	05/12/14	DRAINAGE SOVERFLOW ATTENUATION REVISED	AS	JW	AR
C01	24/04/14	APPROVED FOR CONSTRUCTION	MS	ML	AR

**FOR CONSTRUCTION**

Chiltern Railways

Marjoleine Station,  
Great Central House,  
Melcombe Place,  
Luton, MK1 1JJ

Contractor(s)

**ATKINS**

The Axis  
10 Holliday Street  
Birmingham  
West Midlands  
B1 1TF

Tel: +44 (0)121 483 5000  
Fax: +44 (0)121 483 6333

Project

**EAST WEST RAIL PHASE 1**

Drawing Title

**GENERAL ARRANGEMENT  
LANGFORD LANE  
ACCOMMODATION TRACK  
PROPOSED DRAINAGE**

Designed	Signed	Date
M. STEVENS	Signed	14/11/2013
Drawn	Signed	Date
M. REHMAN	Signed	14/11/2013
Checked	Signed	Date
P. LAWRENCE	Signed	14/11/2013
Approved	Signed	Date
A. ROSE	Signed	14/11/2013

Scale(s) 1:1000 ELR & Mileage OXD 21M 12C

Alternative Reference Sheet 1 of 2

Drawing Number 5114534-ATK-DRG-DR-020066 C02

**SAFETY, HEALTH AND ENVIRONMENTAL INFORMATION**

IN ADDITION TO THE HAZARDS/RISKS ASSOCIATED WITH THE TYPES OF WORK DETAILED ON THIS DRAWING, NOTE THE FOLLOWING SIGNIFICANT RESIDUAL RISKS

**CONSTRUCTION**  
WORKING ADJACENT TO LIVE RAILWAY, HITTING EXISTING UTILITIES CAUSING ELECTROCUTION, RISK OF LEPTOSPIROSIS WORKING NEAR WATER, WORKING ADJACENT TO ARCHAEOLOGICAL ZONES OF INTEREST, RISK OF CAUSING DAMAGE TO ARCHAEOLOGICAL FEATURES.

**MAINTENANCE/CLEANING**  
AS ABOVE, RISK OF BLOCKAGES IN CARRIER DRAINS/CULVERTS AND HYDRO-BRAKES. REFER TO PIPE MANUFACTURER'S INSTRUCTIONS REGARDING JETTING PRESSURE TO AVOID PIPE DAMAGE. SILT TO BE REMOVED FROM MANHOLE CHAMBERS AND DITCHES. REFER TO HYDRO-BRAKE MANUFACTURER'S INSTRUCTIONS REGARDING MAINTENANCE.

**USE**  
N/A

**DECOMMISSIONING/DEMOLITION**  
AS CONSTRUCTION