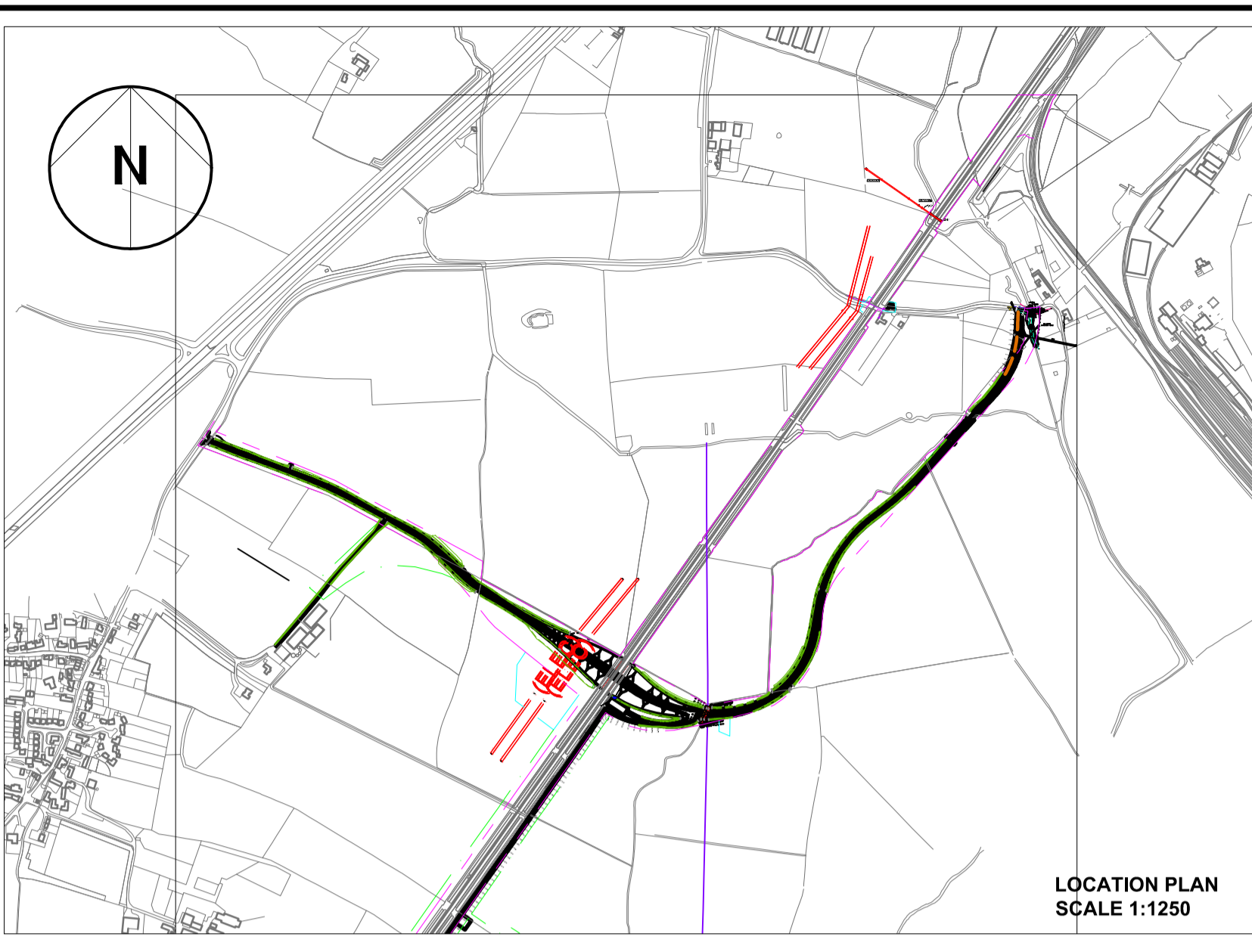
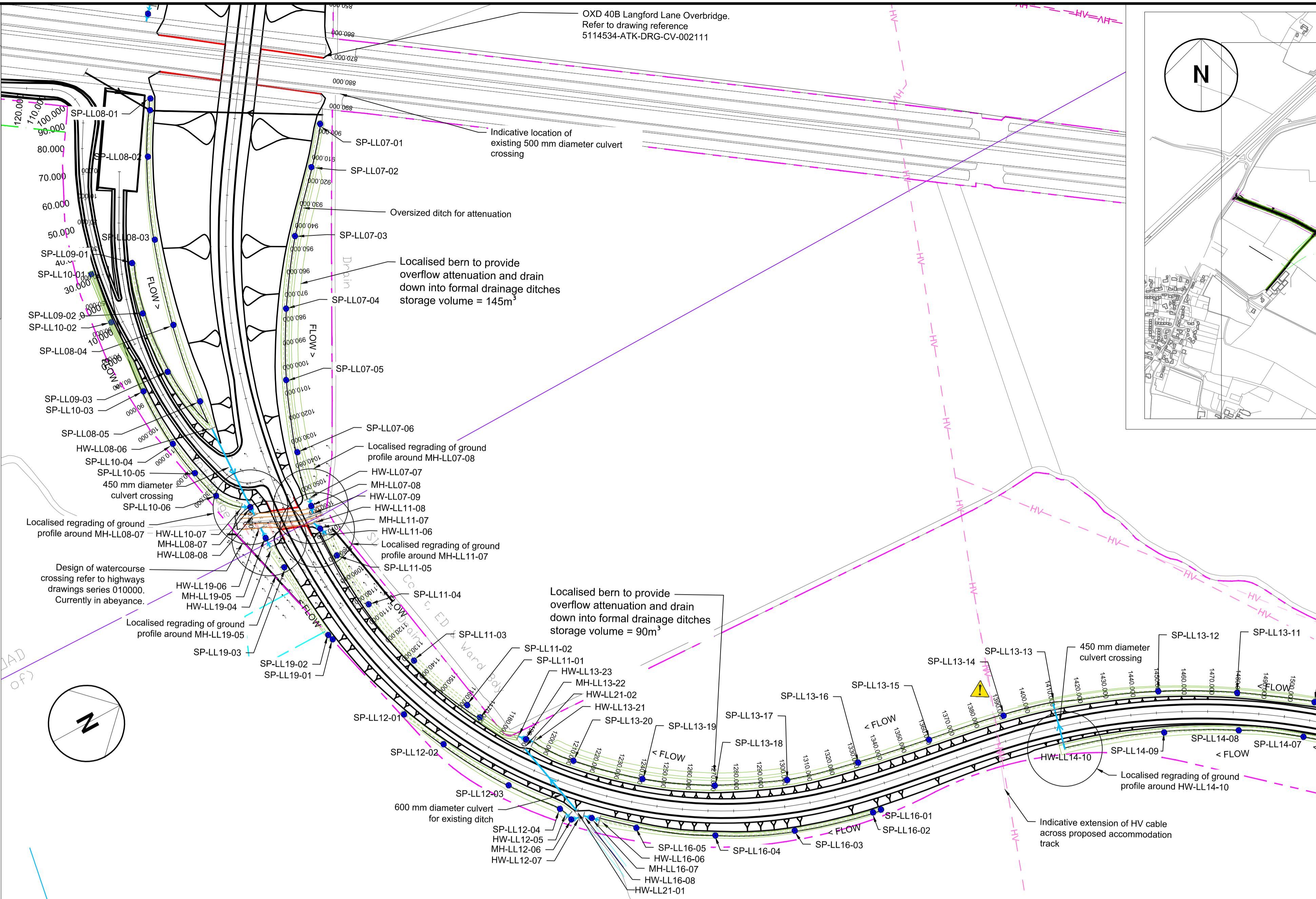


OXD 40B Langford Lane Overbridge.
Refer to drawing reference
5114534-ATK-DRG-CV-002111



SAFETY, HEALTH AND ENVIRONMENTAL INFORMATION

IN ADDITION TO THE HAZARDS/RISKS ASSOCIATED WITH THE TYPES OF WORK DETAILED ON THIS DRAWING, NOTE THE FOLLOWING SIGNIFICANT RESIDUAL RISKS

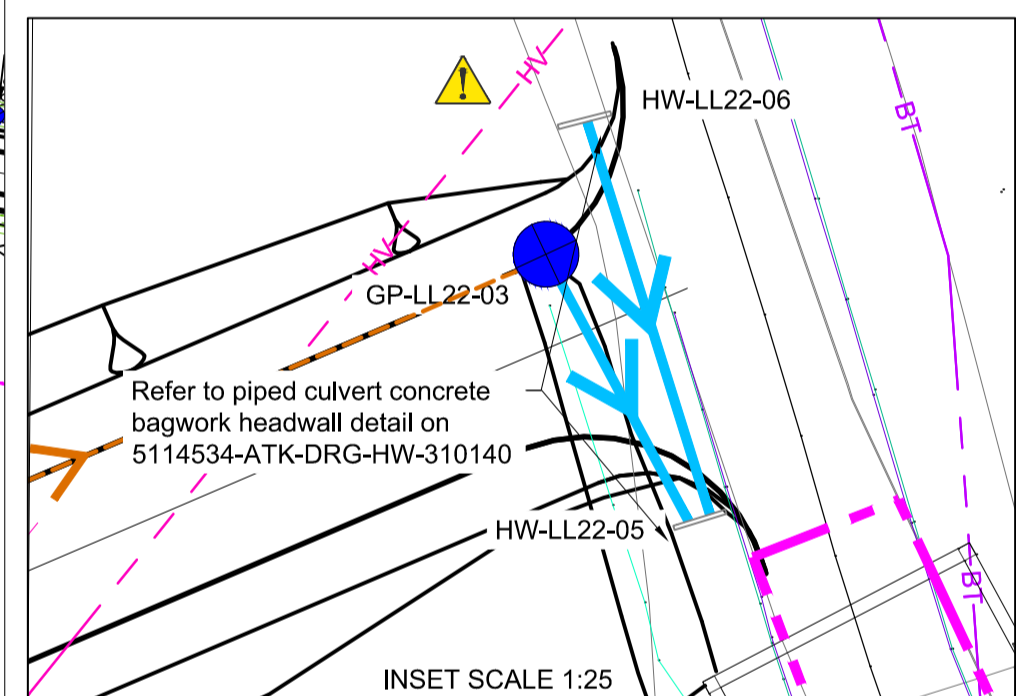
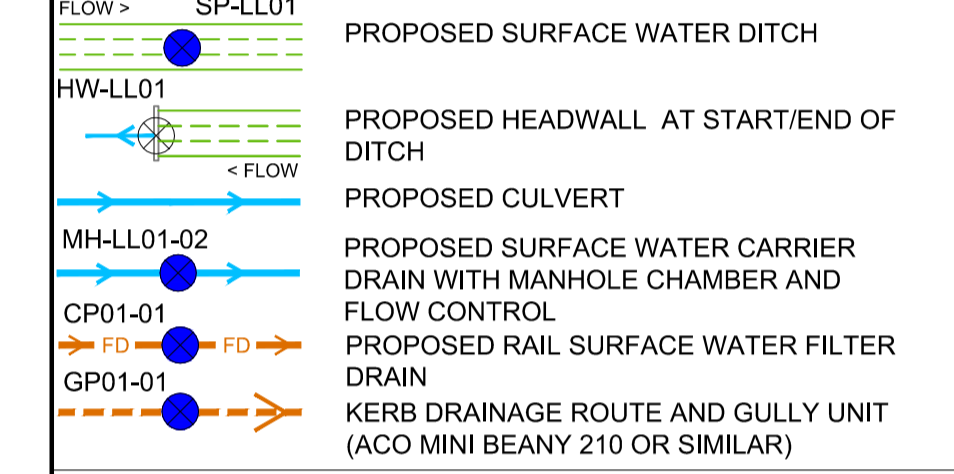
CONSTRUCTION
WORKING ADJACENT TO LIVE RAILWAY. HITTING EXISTING UTILITIES CAUSING ELECTROCUTION. RISK OF LEPTOSPIROSIS WORKING NEAR WATER. WORKING ADJACENT TO ARCHAEOLOGICAL ZONES OF INTEREST. RISK OF CAUSING DAMAGE TO ARCHAEOLOGICAL FEATURES.

MAINTENANCE/CLEANING
AS ABOVE. RISK OF BLOCKAGES IN CARRIER DRAINS/CULVERTS AND HYDRO-BRAKES. REFER TO PIPE MANUFACTURER'S INSTRUCTIONS REGARDING JETTING PRESSURE TO AVOID PIPE DAMAGE. SILT TO BE REMOVED FROM MANHOLE CHAMBERS AND DITCHES. REFER TO HYDRO-BRAKE MANUFACTURER'S INSTRUCTIONS REGARDING MAINTENANCE.

USE
N/A

DECOMMISSIONING/DEMOLITION
AS CONSTRUCTION

- Legend/Notes**
- ALL DIMENSIONS ARE IN MILLIMETRES UNLESS OTHERWISE STATED. ALL LEVELS ARE IN METRES ABOVE PROJECT DATUM. ALL COORDINATES ARE BASED ON 'OBB12 SNAKE GRID'.
 - THIS DRAWING IS NOT TO BE SCALED.
 - REFER TO DRAWING SERIES 5114534-ATK-DRG-DR-023325-023332 FOR THE LOCATION AND DETAILS OF ALL MANHOLE CHAMBERS, PIPES AND DITCHES, INCLUDING SETTING OUT POINTS ALONG DITCHES.
 - ALL DRAWINGS SHALL BE READ IN CONJUNCTION WITH THE SPECIFICATION 5114534-ATK-DRE-SPC-020001.
 - REFER TO 5114534-ATK-DRG-DR-020100 AND 020101 FOR CONSTRUCTION DETAILS OF DITCHES AND FILTER DRAINS.
 - FOR DETAILS OF EARTHWORKS (EXCLUDING DITCHES) REFER TO EARTHWORKS DRAWINGS REF 5114534-ATK-DRG-DR-060130 - 060132.
 - TOPOGRAPHICAL SURVEY FROM 5114534-ATK-MOD-SU-000001 TRACK ALIGNMENT FROM 5114534-ATK-MOD-TR-000052.
 - THE SERVICE INFORMATION SHOWN ON THESE DRAWINGS HAS BEEN COLLATED FROM SERVICE RETURNS DATED DECEMBER 2013 AND SURVEY SITE INVESTIGATIONS BY OTHERS IN RELATION TO THE EAST WEST RAIL CORRIDOR. NO LIABILITY OF ANY KIND WHATSOEVER IS ACCEPTED BY ATKINS LIMITED, ITS SERVANT OR AGENTS, FOR ANY ERROR OR OMISSION IN RESPECT OF INFORMATION CONTAINED ON THE PLANS PROVIDED. THIS PLAN IS A COMPILATION OF A NUMBER OF PLANS PROVIDED AT DIFFERENT SCALES AND IS INTENDED TO PROVIDE A GRAPHICAL REPRESENTATION OF SERVICES WITHIN THE AREA AND IT IS IMPOSSIBLE TO GUARANTEE ACCURACY. IN ADDITION IT IS A COMPILATION OF INFORMATION SUPPLIED BY UTILITY COMPANIES WHO DO NOT GUARANTEE THE ACCURACY OF THE INFORMATION. THE UNDERGROUND SERVICES MUST BE VERIFIED AND ESTABLISHED ON SITE BEFORE ANY EXCAVATION IS CARRIED OUT. IT IS THE RESPONSIBILITY OF ANY ON SITE CONTRACTOR TO IDENTIFY AND LOCATE ANY UTILITY PLANT PRIOR TO DEVELOPMENT WORK GOING AHEAD.
 - NO FENCELINE OR LAND BOUNDARIES ARE SHOWN, REFER TO HIGHWAYS DRAWINGS 5114534-ATK-DRG-HW-010101 TO 010103.
 - CULVERTS OF EXISTING DITCHES THAT ARE TO BE ABANDONED OR DIVERTED WILL REQUIRE PERMANENT + TEMPORARY WORKS CONSENT FROM THE LEAD LOCAL FLOOD AUTHORITY (OXFORDSHIRE COUNTY COUNCIL).
 - DRAWING TO BE READ IN CONJUNCTION WITH DRAWING 5114534-ATK-DRG-DR-020066.



Rev	Date	Description of Revisions	Drawn	Chkd	Appr
CD4	18/09/15	SAM ROUTE DIVERSION		SG	PL AR
CO3	29/05/15	DRAINAGE ALIGNMENT REVISED		UH	PL AR
B02	05/12/14	OVERFLOW ATTENUATION REVISED		AS	JW AR
CO2	31/07/14	HIGHWAYS BRIDGE STRUCTURES ADDED		SH	ML AR
CO1	24/04/14	APPROVED FOR CONSTRUCTION		MS	ML AR

FOR CONSTRUCTION



Contractor(s)
ATKINS
The Axis
10 Holliday Street
Birmingham
West Midlands
B1 1TF
Tel: +44 (0)121 483 5000
Fax: +44 (0)121 483 6333

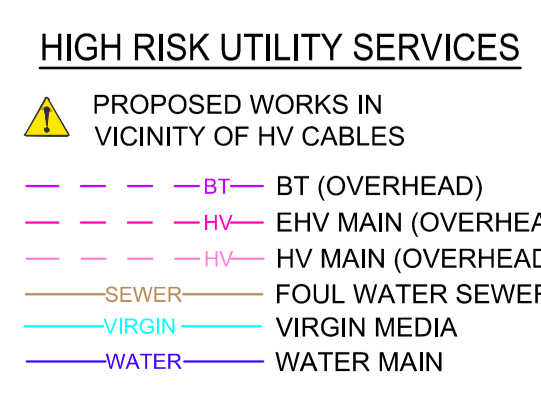
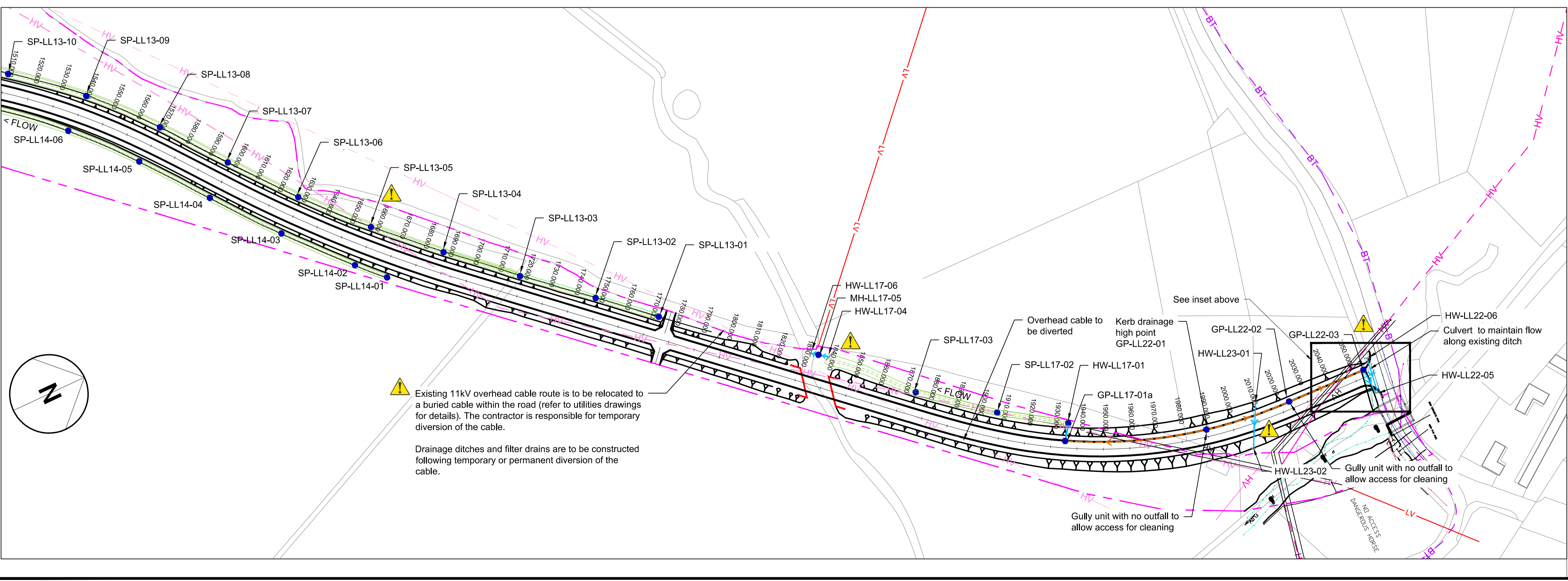
Project
EAST WEST RAIL PHASE 1

Drawing Title
**GENERAL ARRANGEMENT
LANGFORD LANE
ACCOMMODATION TRACK
PROPOSED DRAINAGE**

Designed	M. STEVENS	Signed		Date	14/11/2013
Drawn	S. GENEVER	Signed		Date	14/11/2013
Checked	P. LAWRENCE	Signed		Date	14/11/2013
Approved	A. ROSE	Signed		Date	14/11/2013

Scale(s)
1:1000
ELR & Mileage
OXD 21M 12C

Alternative Reference
Sheet
2 of 2



Existing 11kV overhead cable route is to be relocated to a buried cable within the road (refer to utilities drawings for details). The contractor is responsible for temporary diversion of the cable.

Drainage ditches and filter drains are to be constructed following temporary or permanent diversion of the cable.

Gully unit with no outfall to allow access for cleaning

Gully unit with no outfall to allow access for cleaning