



**NOTES**

**GENERAL NOTES :-**  
 GRID COORDINATES ARE ORDNANCE SURVEY NATIONAL GRID DERIVED FROM OPIS TRANSFORMATION. OPIS COORDINATES AND LEVELS SET AT ST01 (NO SCALE FACTOR APPLIED)  
 THIS DRAWING HAS BEEN PRODUCED WITH A PLOT SCALE ACCURACY OF 1:50

**TOPOGRAPHICAL SURVEY KEY :-**  
 (WHERE APPLICABLE)

mh - manhole	vp - vent pipe
rc - road sign	tp - lamp post
cl - cover level	lp - lamp post
il - invert level	ep - electric pole
sp - depth	ap - electric pole
top - top of cop	tl - traffic light
td - top of tank	sl - street light
up - top of pipe	cb - control box
ul - unable to lift	bd - box
wf - water filled chamber	cl - cable
mc - meter	cl - cable
rh - fire hydrant	h - hedge
z - gully	h/a - hedge
sv - stop valve	f/wh - flower
cc - cable television	sf - fence - stone/brick
wt - water meter	sf - fence - security
bl - telecom	rt - rail - retaining wall
f - foot	p & f - fence - post & rail
re - rendering	h/wh - hedge
er - earthing rod	h/wh - hedge
elec - electric	con - concrete
fr - fire	esp - eaves
fr - fire	OSM - Ordnance Survey bench mark
fr - fire	fl - floor level
fr - fire	tl - track level
fr - fire	wp - waste pipe
fr - fire	wp - wall vent pipe
fr - fire	wp - wall vent pipe
fr - fire	wp - wall vent pipe

**BUILDING SURVEY KEY :-**  
 (WHERE APPLICABLE)

TBM - temporary bench mark	elec - electricity
fl - finished floor level	g/mtr - gas meter
ll - limeshell level	h - fire hose reel
fl - floor to head height	bt - telecommunications point
fl - floor to all height	es - single electricity socket
u/a - underside height	es - double electricity socket
ah - arch head height	ls - light
sp - arch springing point height	sp - ceiling point
ro - room height	cb - fuse box
ro - radiator	fl - fluorescent light fitting
h/w - hot water tank	bar - intruder alarm sensor
h/w - hot water tank	bar - intruder alarm sensor
h/w - hot water tank	ab - alarm box
h/w - hot water tank	em - water meter
h/w - hot water tank	wt - water
h/w - hot water tank	ic - inspection chamber
h/w - hot water tank	mh - manhole cover
h/w - hot water tank	cl - cover level
h/w - hot water tank	il - invert level
h/w - hot water tank	d - down diameter
h/w - hot water tank	f/b - floorboard
h/w - hot water tank	con - concrete
h/w - hot water tank	br - brick
h/w - hot water tank	q/tiles - quarry tiles
h/w - hot water tank	f/p - fire place

**UTILITY SURVEY KEY :-**  
 (WHERE APPLICABLE)

—	ELECTRIC CABLE
—	WATER PIPE
—	FOUL SEWER
—	STORM SEWER
—	COMBINED SEWER
—	DUCTS
—	CABLE TELEVISION
—	DATA CABLE
—	TELEPHONE CABLE
—	GAS PIPE
—	FUEL PIPE
—	UNIDENTIFIED SERVICE
—	OTHER

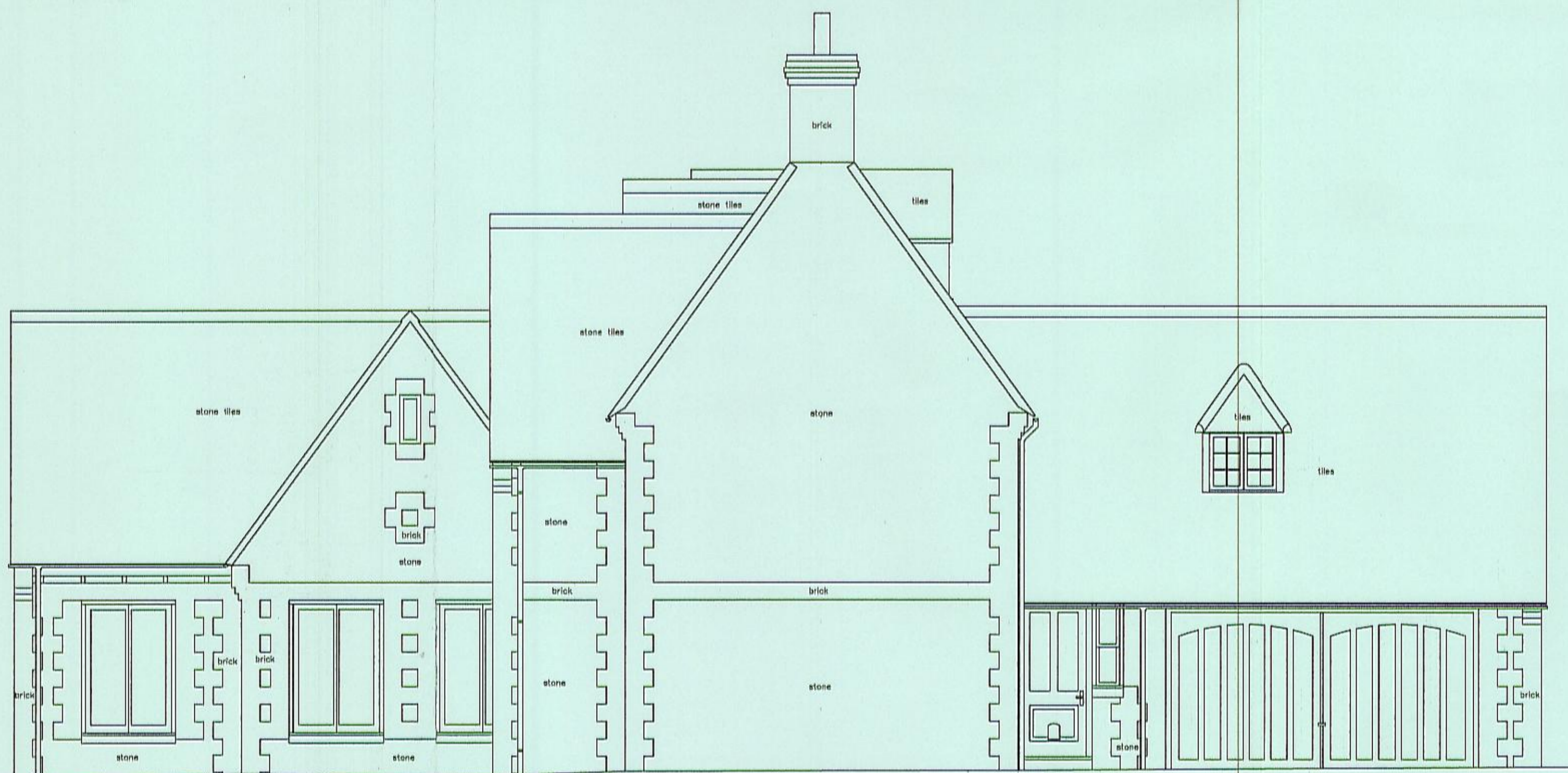
**ABBREVIATIONS :-**

mh - manhole cover	ent - end of trace
ic - inspection chamber	ul - unable to lift
cl - cover level	uls - unable to survey
il - invert level	ca - assumed route
bd - back drop	nl/a - not located trench scar
	tr - taken from records
	ut - unable to trace
	utr - unable to read

**DISCLAIMER :-**  
 Electromagnetic techniques have been used in the location of underground services. The results are not infallible and trial excavations should be carried out to confirm service identifiers, positions and particularly depths, where these are critical. The completeness of the underground services information cannot be guaranteed.  
 This method of survey does not differentiate between live and dead services, and as such all services should be treated as live. This drawing may not include the location of all public services that may cross the site, therefore the relevant service drawings should be obtained from the appropriate utility company and used in conjunction with this drawing.  
 Private service pipes and cables in highways are not shown, but their presence should be anticipated.  
 Additional below ground structures or obstructions not shown on this drawing may be present. Reference should be made to historical plans and on-built drawings. Excavations in the vicinity of services should be carried out with due diligence ref: HSE47 document avoiding dangers from underground services.  
 Pipe diameters noted in mm

Datum 70.00m

**NORTH ELEVATION**



**TANK INFORMATION :-**  
 (WHERE APPLICABLE)

DISUSED PUMP ISLANDS AND TANKS FEEDS ARE NOT SHOWN AS NO INFORMATION IS HELD FOR THE OLD SERVICE RUNS

FUEL LINES AND WINGLINES ARE SHOWN AS A SCHEMATIC PLAN AND DO NOT REPRESENT ACCURATE POSITION.

TANK No.	FUEL GRADE	CAPACITY LITRES	PUMPS ISLANDS
1			
2			
3			
4			
5			
6			
7			
8			
9			
10			

**MIDLAND SURVEY LTD**

**HEAD OFFICE**  
 Cromwell House, Westfield Road, Southam, Warwickshire, CV47 0JH.  
 Tel: 01925 310311 Fax: 01925 510612  
 E-Mail: mid@midlandsurvey.co.uk  
 www.midlandsurvey.co.uk

Client: PANTON ARCHITECTURAL DESIGN  
 Project: 2 BIRCHWOOD DRIVE, SHIPTON ON CHERWELL, OX5 1HR  
 Title: ELEVATIONS  
 Date: JUNE 2015  
 Scale: 1:50@A1  
 Dwg No: 22302/4  
 Surveyor: T.S.R.  
 Checked: M.F.

**TOPOGRAPHICAL (LAND) SURVEYORS / UTILITY SURVEYORS  
 BUILDING MEASUREMENT SURVEYORS / 3D LASER SCANNING**

