

ITEMS LIST

PLAY AREA

Equipment		
A. Hurricane Swing	Ref: R24-ITY-724A	
B. Cone Climber 3.0m High	Ref: UKPANCC3000	
C. Kanope Multipay Unit	Ref: J2721A	
D. Bailey Adventure Log	Ref: UKALBAILEY	
E. Metal Cableway	Ref: J514A	
F. Challenger Climbing Boulder	Ref: UKChallenger	
G. Basic Senior Unit	Ref: J1605A	
H. Glacial Boulder x8	Ref: UKG1053	
I. Landscaping Logs (installed upright) x14	Ref: UKG1029	
J. Fallen Tree Trunk 3.6m long (sawn In half) x2	Ref: UKG1057	

Ancillaries		
K. Chaumont Bench x3	Ref: RBA8	
L. Waste Bin Type B x4	Ref: J2822B	
M. A2 Sign Post and Panel (BTC Spec) x2	Ref: A2PP	
N. No Dogs Paver x2	Ref: UKK11404	

Surfacing
Hurricane Swing, Cone Climber 3.0m High, Kanope Multipay Unit & 1x Fallen Tree Trunk to be surfaced with 226m² Green / Black flecked wetpour 50x50 mtk, depths broken down as follows:

- 171m² @ 40mm
- 14m² @ 50mm
- 7m² @ 70mm
- 27m² @ 80mm
- 7m² @ 140mm

Coloured wetpour wear pads have also been included as shown.
Wetpour Groundworks to include 226m² Excavation, 226m² MOT Type 1 Stone, 226m² Geotextile Membrane & 711m Block Paver Edges.

Bailey Adventure Log, Metal Cableway, Challenger Climbing Boulder & Basic Senior Unit to be surfaced with 237m² Grassmat Safer Surfacing.

237m² Topsoil & Turf to be laid underneath grassmat.
All equipment not mentioned above to be installed onto grass.

MUGA AREA

Equipment		
O. 14m x 24m MUGA*	Ref: J22120A	

* MUGA includes 1x G22110 Gate

Groundworks
Tarmac Surfacing to be laid for MUGA surfacing including:
• Macadam open texture base course: 40mm thick 567m²
• Macadam 6mm medium wearing course: 20mm thick 567m²

For groundworks and edges see Optional Extras Section of items list below.
Football & Basketball Line Markings has been included.

Ancillaries		
P. High Seating x3	Ref: J2825A	
Q. Cycle Rack x2	Ref: J2830A	
R. Meeting Point	Ref: J2850A	

Post Installation Inspection has been included.

Fencing		
S. 128Lm Bowtop Fencing 1m high PPC (Black)		
T. Prosafe Gate 1m high PPC (Red)		
U. Prosafe Combination Gate 1m high PPC (Red)		

Optional Extras
MUGA Groundworks
Tarmac surfacing requires:
• Excavate to reduce levels average 160mm deep 170m²
• Level and compact bottoms of excavations 567m²
• Cut-fill and dispose remainder of excavated material off site 170m²
• Geotextile membrane 567m²
• MOT Type 1 filling to make-up levels ave. 100mm thick 567m²
• Level compact and filling 567m²
• To be edged by 100Lm PCC edges.

Internal Pathway
Tarmac surfacing requires:
• Excavate to reduce levels average 160mm deep 9m²
• Level and compact bottoms of excavations 30m²
• Cut-fill and dispose remainder of excavated material off site 9m²
• Geotextile membrane 30m²
• MOT Type 1 filling to make-up levels ave. 100mm thick 30m²
• Level compact and filling 30m²
• To be edged by 52Lm PCC edges.

Subject to full site survey from a Protudic Representative.

Based on a flat fully established grass site.

Proposed Grassmat Safer surfacing is based on a fully established grass site (including a minimum of 150mm of good quality soil and turf).

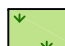
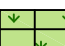






Preliminaries have been included within your quotation, these equate to site setup, site storage, delivery, unloading of equipment, site welfare, heras fencing & signage and skips (this can also include supervision where necessary).

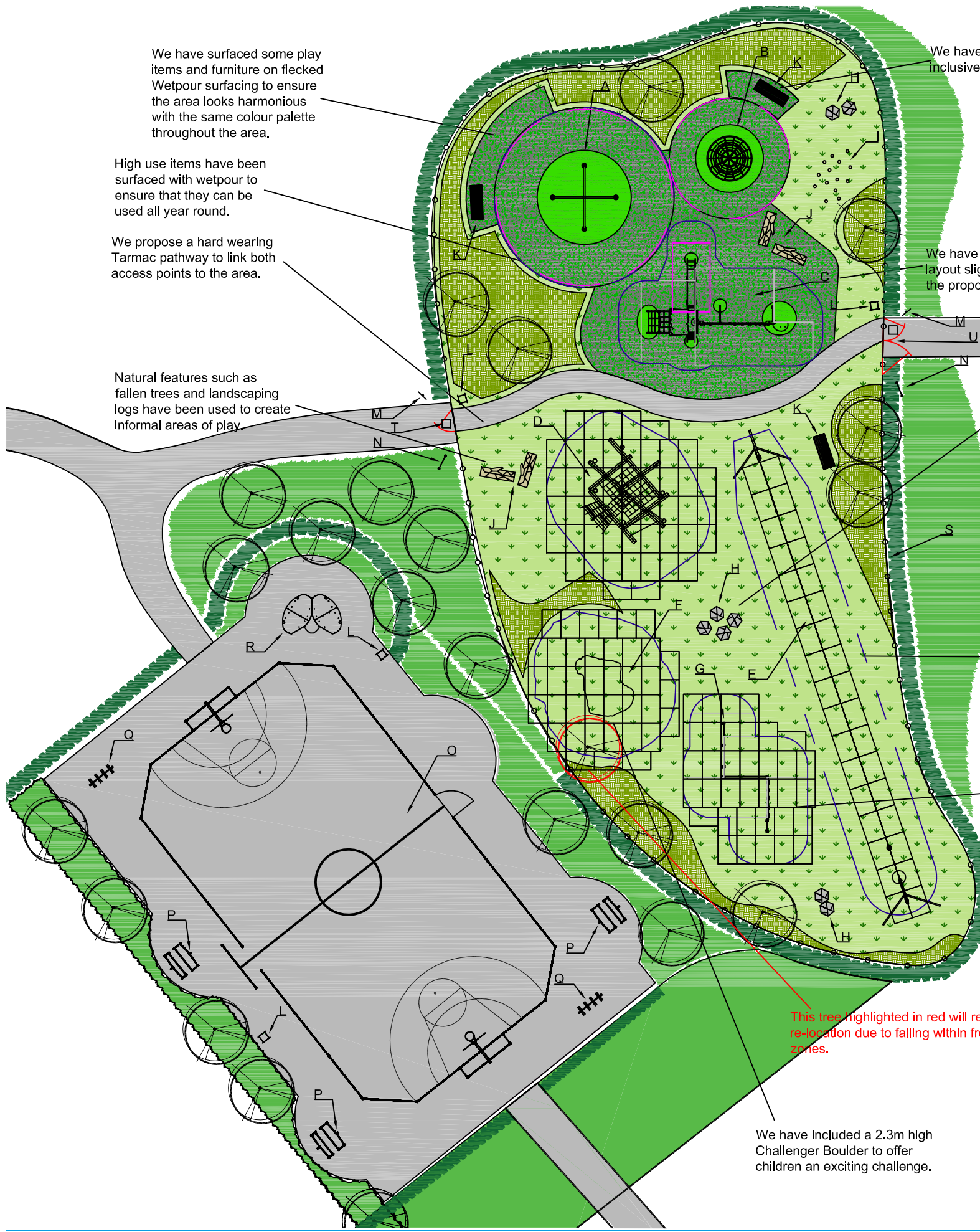
Measurements taken from client drawing Ref: 5205/CP/ASP4.0 Revision E. Measurements correct at time of CAD drawing.

Topsoil & Turf/Seed to be done by others (watering is the responsibility of others and has not been costed for).

All pathways, furniture, planting, mounding and any other soft landscaping works not mentioned above are to be done by others.

PRODUCT KEY

	Grass		Grassmat
	Tarmac Pathway		Planting (by aspect)
	Wetpour		Free Space
	Free Fall		Free Space



We have surfaced some play items and furniture on flecked Wetpour surfacing to ensure the area looks harmonious with the same colour palette throughout the area.

High use items have been surfaced with wetpour to ensure that they can be used all year round.

We propose a hard wearing Tarmac pathway to link both access points to the area.

Natural features such as fallen trees and landscaping logs have been used to create informal areas of play.

We have included 4 benches inclusive of back and arm rests.

We have changed the surfacing layout slightly to accommodate the proposed items of equipment.

We have located a total of eight boulders around the play area, ensuring they are more than 1.5m away from any hard edges.

We have surfaced all play items and furniture on grassmat surfacing to ensure the grass can withstand wear throughout the year.

An impressive Climbing Structure with lots of climbing elements caters for a large number of children at a time.

This tree highlighted in red will require re-location due to falling within free fall zones.

We have included a 2.3m high Challenger Boulder to offer children an exciting challenge.