

**ITEMS LIST**

- PLAY AREA Equipment**
- A. Hurricane Swing Ref: R24-1TY-724A
  - B. Cone Climber 3.0m High Ref: UKPANCC3000
  - C. Kanope Multiplay Unit Ref: J2721A
  - D. Balley Adventure Log Ref: UKALBALLEY
  - E. Metal Cableway Ref: J514A
  - F. Challenger Climbing Boulder Ref: UKChallenger
  - G. Basic Senior Unit Ref: J1605A
  - H. Glacial Boulder x8 Ref: UKQ1053
  - I. Landscaping Logs (installed upright) x14 Ref: UKQ1029
  - J. Fallen Tree Trunk 3.6m long (sawn in half) x2 Ref: UKQ1057

- Ancillaries**
- K. Chaumont Bench x3 Ref: RBA8
  - L. Waste Bin Type B x4 Ref: J2822B
  - M. AZ Sign Post and Panel (BTC Spec) x2 Ref: AZPP
  - N. No Dogs Paver x2 Ref: UKX11404

**Surfacing**  
Hurricane Swing, Cone Climber 3.0m High, Kanope Multiplay Unit & 1x Fallen Tree Trunk to be surfaced with 226m² Green / Black flecked wetpour 50:50 mix, depths broken down as follows:

- 178m² @ 40mm
- 14m² @ 50mm
- 7m² @ 70mm
- 27m² @ 80mm

Coloured wetpour wear pads have also been included as shown.  
Wetpour Groundworks to include 226m² Excavation, 226m² MOT Type 1 Stone, 226m² Geotextile Membrane & 71Lm Block Paver Edges.

Balley Adventure Log, Metal Cableway, Challenger Climbing Boulder & Basic Senior Unit to be surfaced with 237m² Grassmat Safer Surfacing.  
237m² Topsoil & Turf to be laid underneath grassmat.

All equipment not mentioned above to be installed onto grass.

- MUGA AREA Equipment**
- O. 14m x 24m MUGA\* Ref: J22120A

\* MUGA includes 1x G22110 Gate

- Groundworks**  
Tarmac Surfacing to be laid for MUGA surfacing including:
- Macadam open texture base course: 40mm thick 567m²
  - Macadam 6mm medium wearing course: 20mm thick 567m²

For groundworks and edges see Optional Extras Section of items list below.  
Football & Basketball Line Markings has been included.

- Ancillaries**
- P. High Seating x3 Ref: J2825A
  - Q. Cycle Rack x2 Ref: J2830A
  - R. Meeting Point Ref: J2850A

Post installation inspection has been included.

- Fencing**
- S. 128Lm Bowtop Fencing 1m High PPC (Black)
  - T. Prosale Gate 1m High PPC (Red)
  - U. Prosale Combination Gate 1m High PPC (Red)

**Optional Extras**

- MUGA Groundworks**  
Tarmac surfacing requires:
- Excavate to reduce levels average 160mm deep 170m²
  - Level and compact bottoms of excavations 567m²
  - Cut-fill and dispose remainder of excavated material off site 170m²
  - Geotextile membrane 567m²
  - MOT Type 1 filling to make-up levels ave. 100mm thick 567m²
  - Level compact and filling 567m²
  - To be edged by 100Lm PCC edges.

- Internal Pathway**  
Tarmac surfacing requires:
- Excavate to reduce levels average 160mm deep 9m²
  - Level and compact bottoms of excavations 30m²
  - Cut-fill and dispose remainder of excavated material off site 9m²
  - Geotextile membrane 30m²
  - MOT Type 1 filling to make-up levels ave. 100mm thick 30m²
  - Level compact and filling 30m²
  - To be edged by 52Lm PCC edges.

Subject to full site survey from a Proludic Representative.  
Based on a flat fully established grass site.

Proposed Grassmat Safer surfacing is based on a fully established grass site (including a minimum of 150mm of good quality soil and turf).

Preliminaries have been included within your quotation, these equate to site setup, site storage, delivery, unloading of equipment, site welfare, trees fencing & signage and skips (this can also include supervision where necessary).

Measurements taken from client drawing Ref: 5205/CP/ASP4.0 Revision E. Measurements correct at time of CAD drawing.

Topsoil & Turf/Seed to be done by others (watering is the responsibility of others and has not been costed for).

All pathways, furniture, planting, mounding and any other soft landscaping works not mentioned above are to be done by others. Proposed Grassmat Safer surfacing is based on a fully established grass site (including a minimum of 150mm of good quality soil and turf).

Preliminaries have been included within your quotation, these equate to site setup, site storage, delivery, unloading of equipment, site welfare, trees fencing & signage and skips (this can also include supervision where necessary).

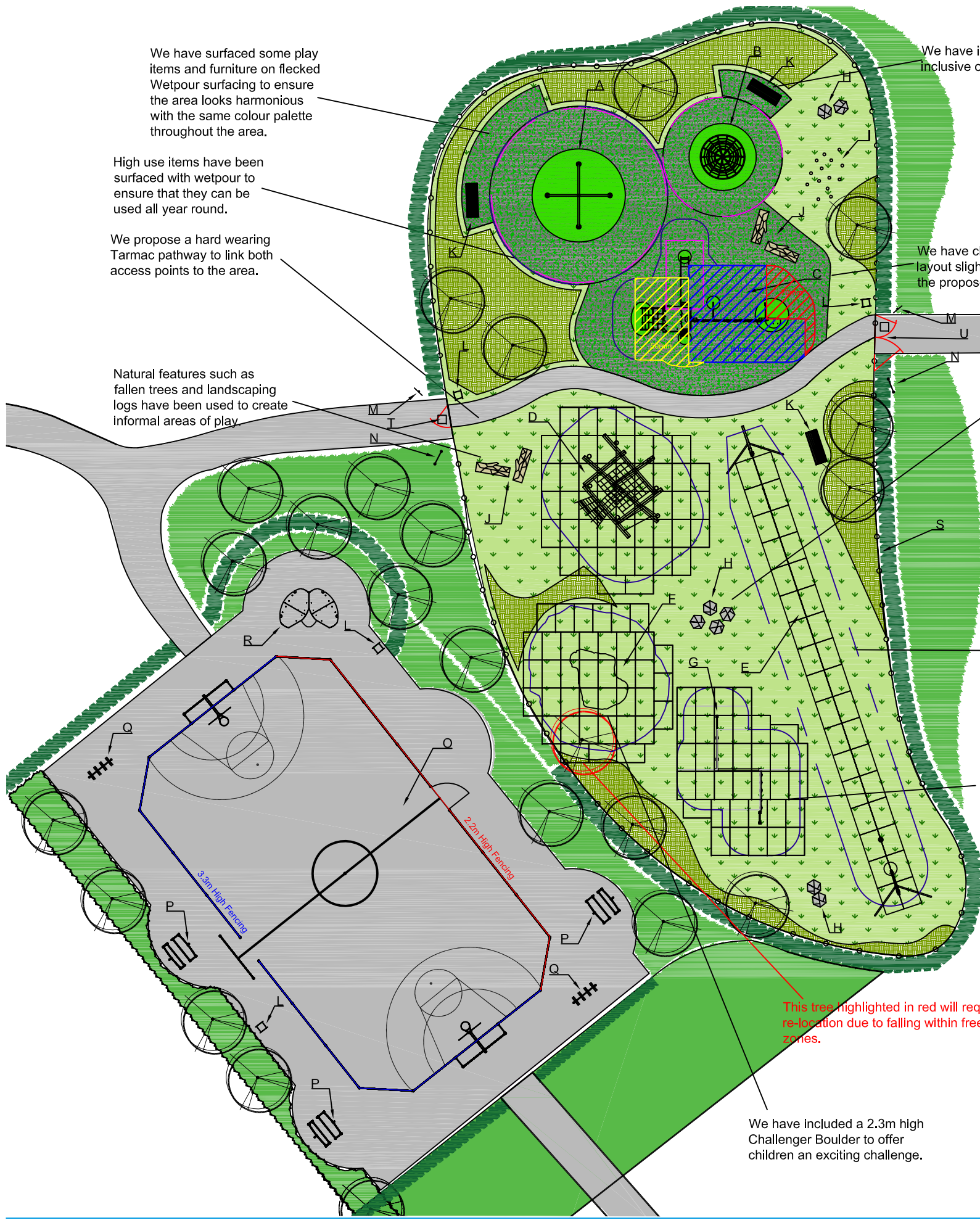
Measurements taken from client drawing Ref: 5205/CP/ASP4.0 Revision E. Measurements correct at time of CAD drawing.

Topsoil & Turf/Seed to be done by others (watering is the responsibility of others and has not been costed for).

All pathways, furniture, planting, mounding and any other soft landscaping works not mentioned above are to be done by others.

**PRODUCT KEY**

- Grass
- Grassmat
- Tarmac Pathway
- Planting (by aspect)
- Wetpour
- Free Fall
- Free Space



We have surfaced some play items and furniture on flecked Wetpour surfacing to ensure the area looks harmonious with the same colour palette throughout the area.

High use items have been surfaced with wetpour to ensure that they can be used all year round.

We propose a hard wearing Tarmac pathway to link both access points to the area.

Natural features such as fallen trees and landscaping logs have been used to create informal areas of play.

We have included 4 benches inclusive of back and arm rests.

We have changed the surfacing layout slightly to accommodate the proposed items of equipment.

We have located a total of eight boulders around the play area, ensuring they are more than 1.5m away from any hard edges.

We have surfaced all play items and furniture on grassmat surfacing to ensure the grass can withstand wear throughout the year.

An impressive Climbing Structure with lots of climbing elements caters for a large number of children at a time.

This tree highlighted in red will require re-location due to falling within free fall zones.

We have included a 2.3m high Challenger Boulder to offer children an exciting challenge.