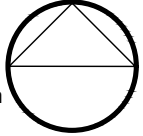


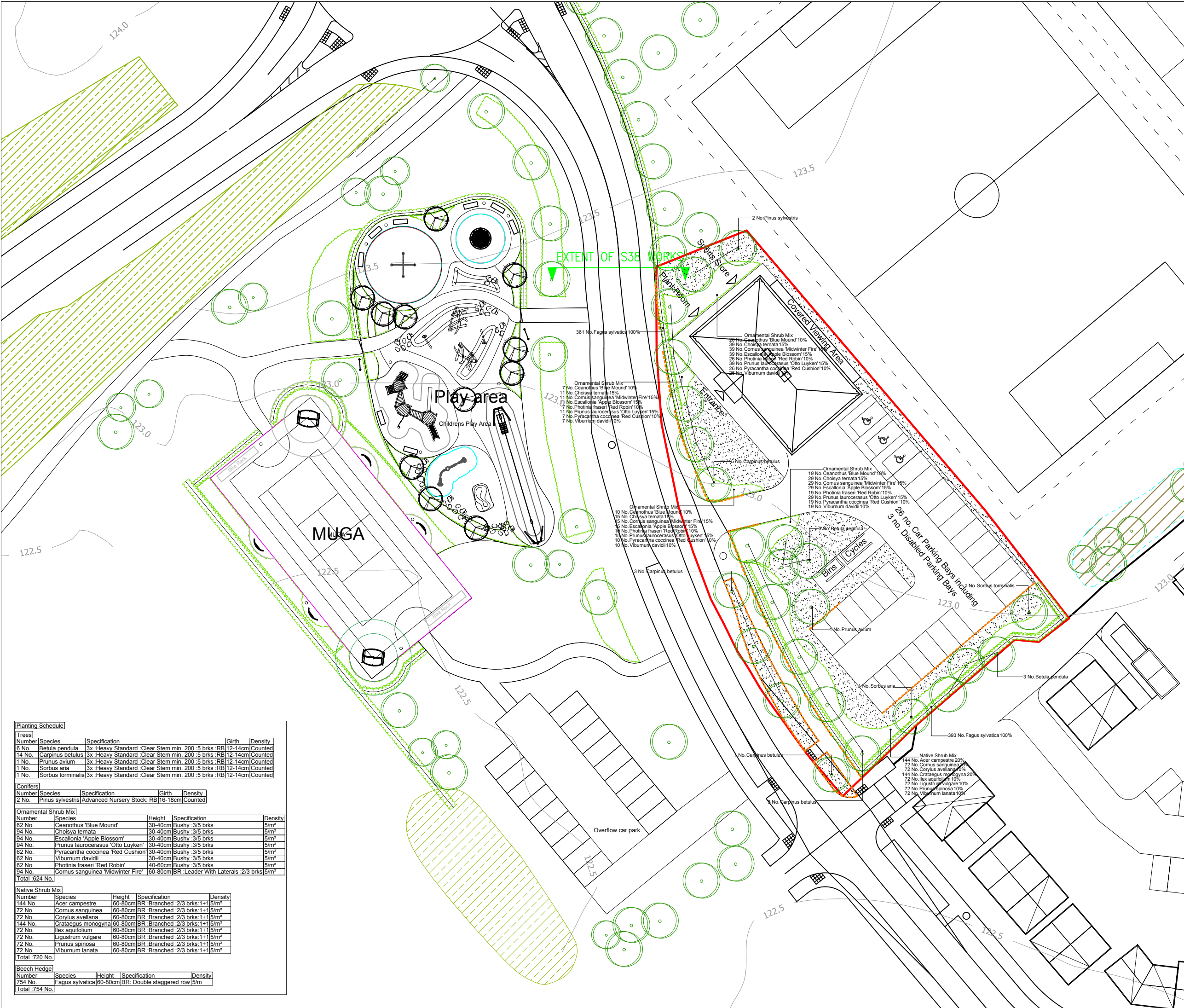
NOTES:
Based upon the Ordnance Survey map with permission of The Controller of Her Majesty's Stationery Office, © Crown Copyright.
Aspect Landscape Planning Ltd, West Court, Hardwick Business Park, Noral Way, Banbury OX16 2AF.
Licence 100045345

Copyright reserved



KEY:

- Pavilion
- Proposed Trees
- Proposed Shrubs
- Proposed Hedge
- Amenity Grass



Planting Schedule

Trees				
Number	Species	Specification	Girth	Density
6 No.	Betula pendula	3x Heavy Standard Clear Stem min. 200.5 brks RB	12-14cm	Counted
14 No.	Carpinus betulus	3x Heavy Standard Clear Stem min. 200.5 brks RB	12-14cm	Counted
1 No.	Prunus avium	3x Heavy Standard Clear Stem min. 200.5 brks RB	12-14cm	Counted
1 No.	Sorbus aria	3x Heavy Standard Clear Stem min. 200.5 brks RB	12-14cm	Counted
1 No.	Sorbus torminalis	3x Heavy Standard Clear Stem min. 200.5 brks RB	12-14cm	Counted
Conifers				
Number	Species	Specification	Girth	Density
2 No.	Pinus sylvestris	Advanced Nursery Stock: RB	16-18cm	Counted
Ornamental Shrub Mix				
Number	Species	Height	Specification	Density
62 No.	Ceanothus 'Blue Mound'	30-40cm	Bushy :3/5 brks	5/m ²
94 No.	Choisya ternata	30-40cm	Bushy :3/5 brks	5/m ²
94 No.	Escallonia 'Apple Blossom'	30-40cm	Bushy :3/5 brks	5/m ²
94 No.	Prunus laurocerasus 'Otto Luyken'	30-40cm	Bushy :3/5 brks	5/m ²
62 No.	Pyracantha coccinea 'Red Cushion'	30-40cm	Bushy :3/5 brks	5/m ²
62 No.	Viburnum davidii	30-40cm	Bushy :3/5 brks	5/m ²
62 No.	Photinia fraseri 'Red Robin'	40-60cm	Bushy :3/5 brks	5/m ²
94 No.	Cornus sanguinea 'Midwinter Fire'	60-80cm BR Leader With Laterals	2/3 brks	5/m ²
Total :624 No.				
Native Shrub Mix				
Number	Species	Height	Specification	Density
144 No.	Acer campestre	60-80cm BR Branched	2/3 brks:1+1	5/m ²
72 No.	Cornus sanguinea	60-80cm BR Branched	2/3 brks:1+1	5/m ²
72 No.	Cornus avellana	60-80cm BR Branched	2/3 brks:1+1	5/m ²
144 No.	Crataegus monogyna	60-80cm BR Branched	2/3 brks:1+1	5/m ²
72 No.	Ilex aquifolium	60-80cm BR Branched	2/3 brks:1+1	5/m ²
72 No.	Ligustrum vulgare	60-80cm BR Branched	2/3 brks:1+1	5/m ²
72 No.	Prunus spinosa	60-80cm BR Branched	2/3 brks:1+1	5/m ²
72 No.	Viburnum lanata	60-80cm BR Branched	2/3 brks:1+1	5/m ²
Total :720 No.				
Beech Hedge				
Number	Species	Height	Specification	Density
754 No.	Fagus sylvatica	60-80cm BR	Double staggered row	5/m
Total :754 No.				

REV	DATE	DESCRIPTION	BY	CHK'D
E	22.11.2016	Updated to include LPA comments, car park entrance planting amended, tree screening planting added	BS	BS
D	26.09.2016	Tree locations updated to avoid services.	BS	BS
C	14.04.2016	Landscape proposals updated to suit architects latest	BS	BS
B	22.03.2016	Landscape proposals updated to suit architects latest	BS	BS
A	27.10.2015	Pavilion updated	BS	BS

REVISIONS

aspect landscape planning

TITLE
**Bankside, Longford Park
Community Park - Pavilion- Planting Plan**

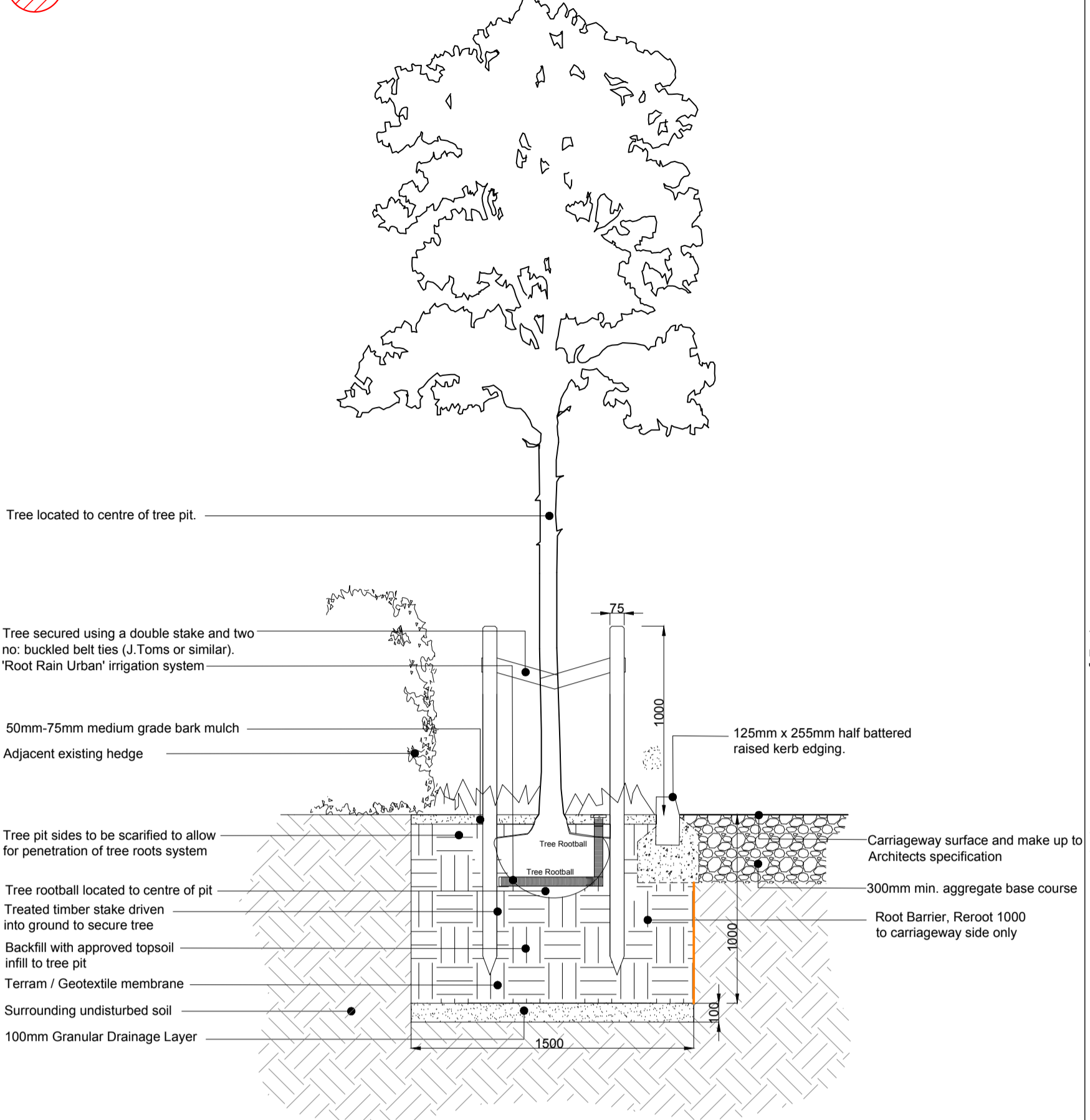
CLIENT
**Taylor Wimpey, Bovis Homes,
Barratt Homes**

SCALE: 1:500 @ A3 DATE: DEC 2014 DRAWN: BS CHK'D: KC

DRAWING NUMBER: 5205/ ASP3.1 REVISION: E

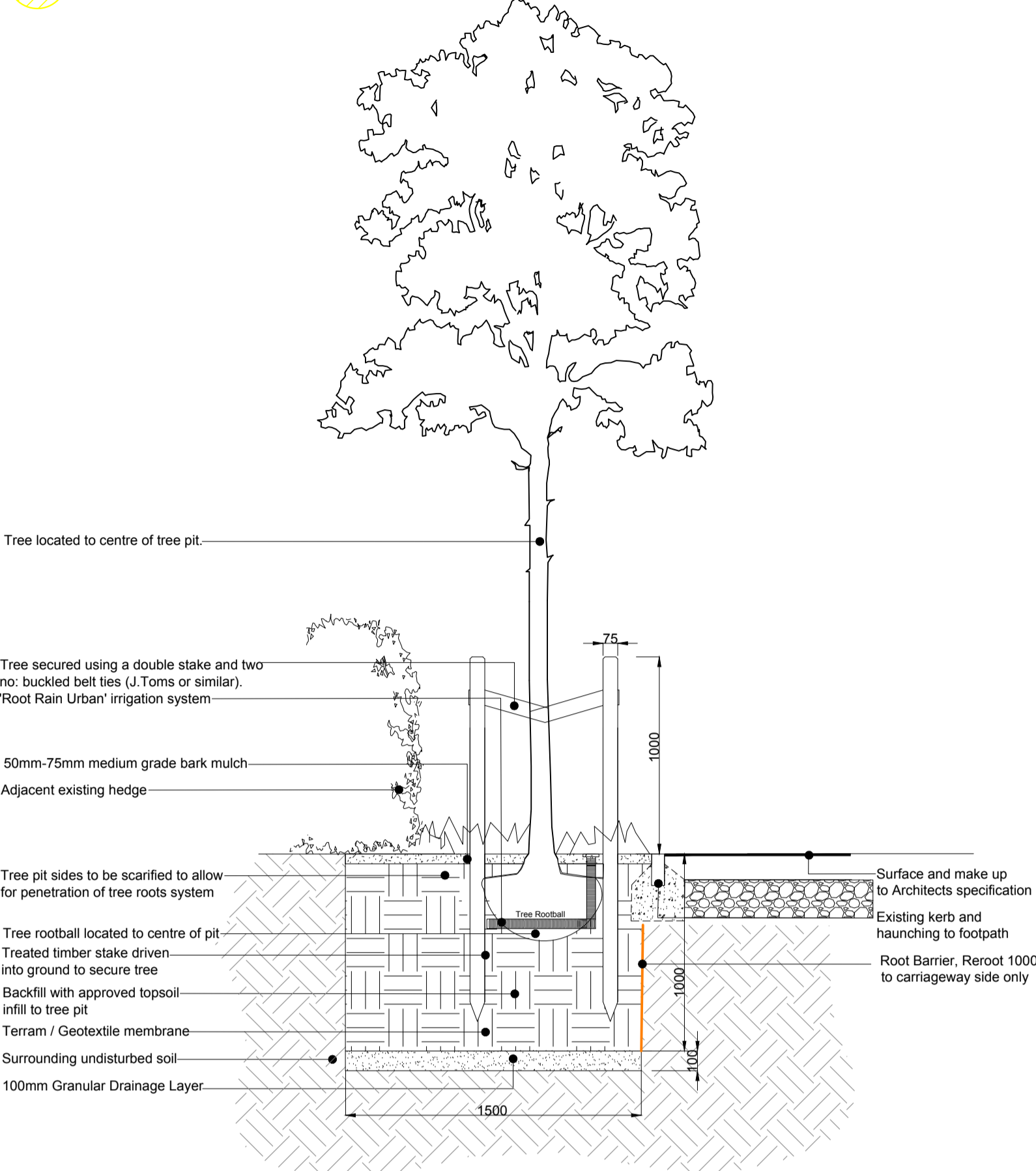
Based on Abacus Architects drawing no. Longford 500S Changing Facility

Tree Pit Adjacent Road Carriage



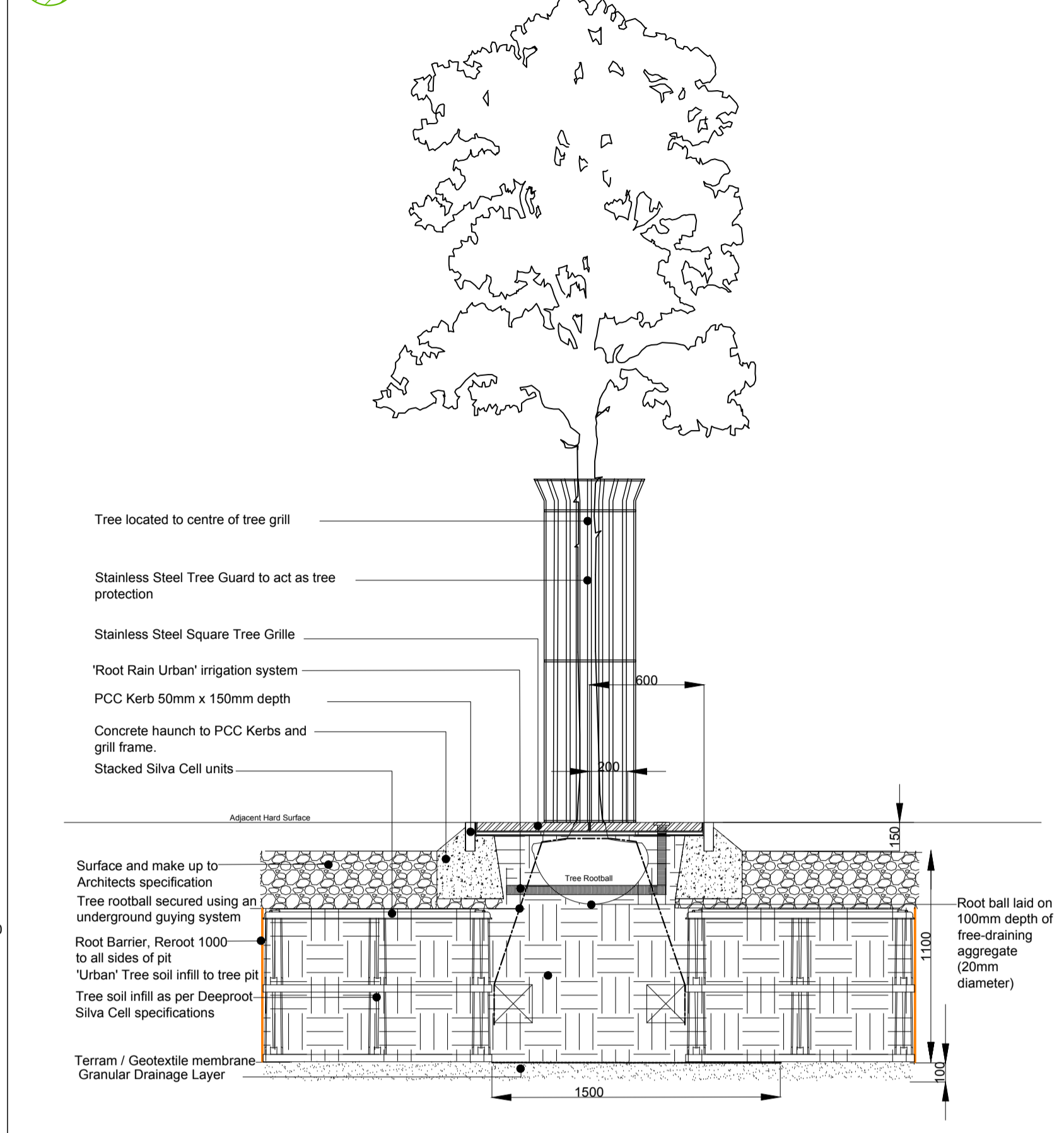
Tree Pit Detail 1
Elevation View
Scale 1:25 @ A1

Tree Pit Adjacent Footway



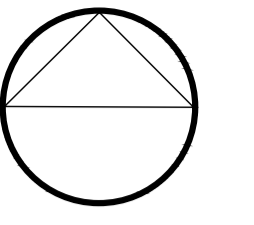
Tree Pit Detail 2
Elevation View
Scale 1:25 @ A1

Hard Landscape Tree Pit



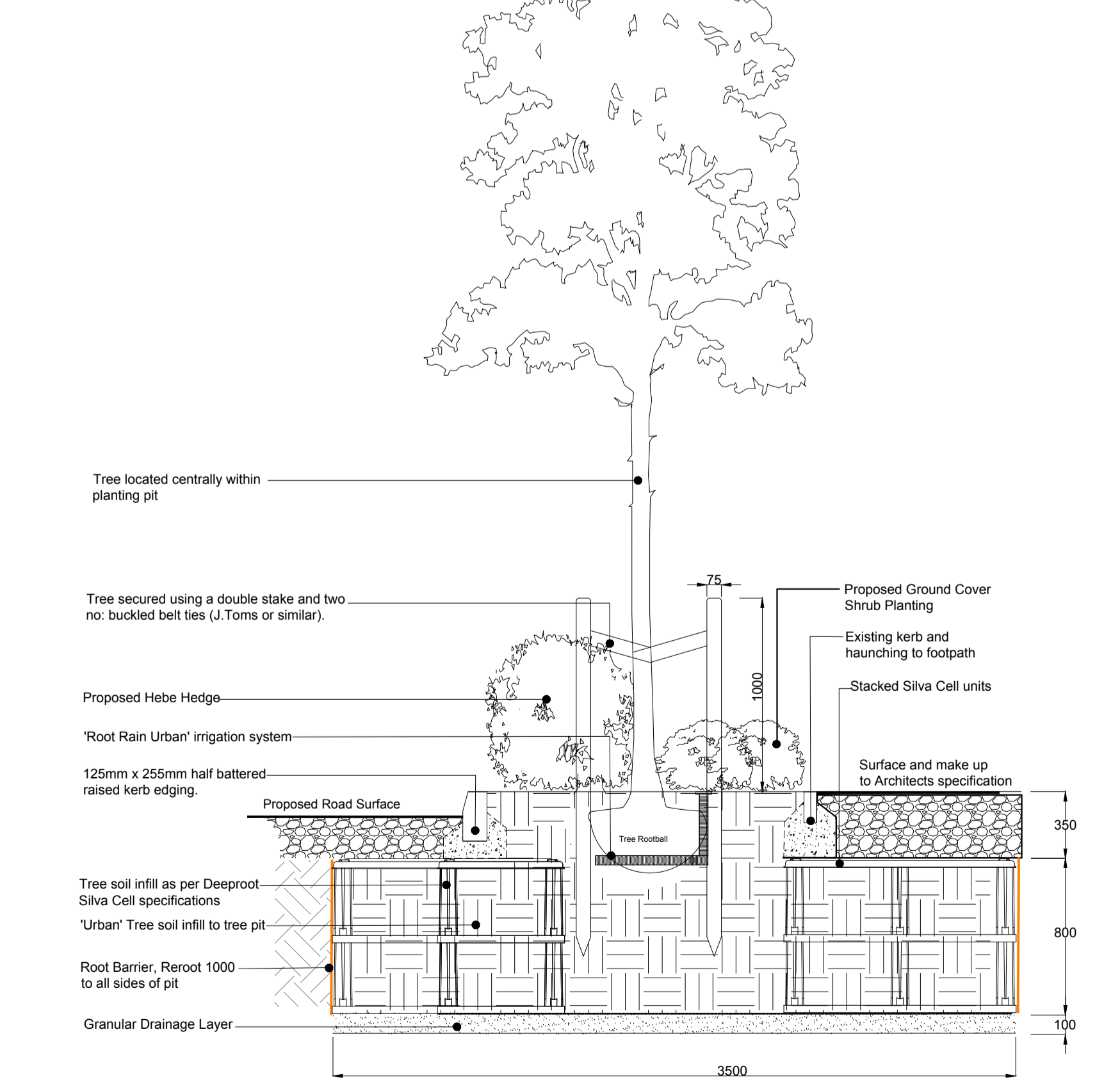
Tree Pit Detail 3
Elevation View
Scale 1:25 @ A1

NOTES:
Based upon the Ordnance Survey map with permission of The Controller of Her Majesty's Stationery Office. © Crown Copyright. Aspect Landscape Planning Ltd, West Court, Harwick Business Park, Norol Way, Banbury OX16 3AF. Licence 100045345
Copyright reserved
No Dimensions to be scaled from this drawing.



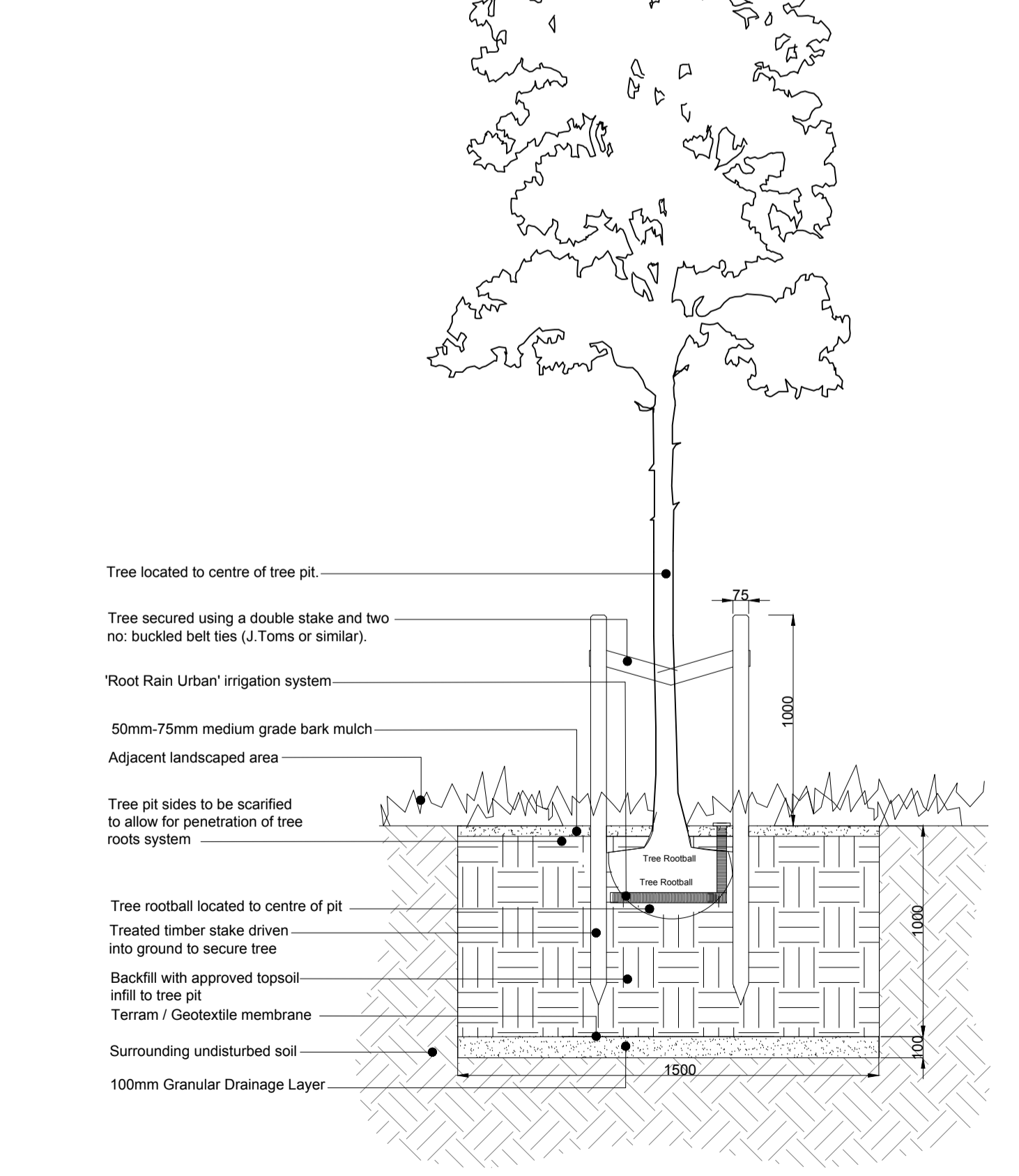
Root Barrier:
Trees within or adjacent to hard surfaces, built form and where underground services are located will require root barriers to be installed. Reroot 1000 or similar should be used where necessary within 3m of proposed tree stem.

Tree Pit Adjacent to Road Carriage and footway



Tree Pit Detail 4
Elevation View
Scale 1:25 @ A1

Tree Pit Within Soft Landscape Area



Tree Pit Detail 5
Elevation View
Scale 1:25 @ A1

B	22.11.2016	Updated to include LPA comments, car park entrance planting amended, tree screening planting added	BS
A	26.09.2016	Tree locations updated to avoid services.	BS
REV	DATE	NOTE	Drawn Chkd
REVISIONS			

aspect landscape planning

TITLE
Longford Park, Banbury Pavilion- Tree Pit Details 1

CLIENT
Barratt Homes, Bovis & Taylor Wimpey Homes

SCALE	DATE	DRAWN
Refer to drawing	AUG 2016	BS
DRAWING NUMBER	REVISION	
5205/ASP.PAV.TPD.3.2	B	

NOTES:
 Based upon the Ordnance Survey map with permission of The Controller of Her Majesty's Stationery Office. © Crown Copyright.
 Aspect Landscape Planning Ltd, West Court, Hardwick Business Park, Noral Way, Banbury OX16 2AF.
 Licence 100045345

Copyright reserved
 No Dimensions to be scaled from this drawing.



- Tree Pit Adjacent Road Carriage
- Tree Pit Adjacent Footway
- Hard Landscape Tree Pit
- Tree Pit Adjacent to Road Carriage and footway
- Tree Pit Within Soft Landscape Area
- Proposed Root Barrier (Reroot 1000 or similar)
Indicative locations shown, subject to detailed services drawings being finalised.

Root Barrier:
 Trees within or adjacent to hard surfaces, built form and where underground services are located will require root barriers to be installed. Reroot 1000 or similar should be used where necessary within 3m of proposed tree stem.



REV.	DATE	NOTE	Drawn/Chk'd
B	22.11.2016	Updated to include LPA comments, car park entrance planting amended, tree screening planting added	BS
A	20.09.2016	Tree locations updated to avoid services.	BS

aspect landscape planning

TITLE
Longford Park, Banbury Pavilion- Tree Pit Details 2

CLIENT
Barratt Homes, Bovis & Taylor Wimpey Homes

SCALE	DATE	DRAWN
1:200 @A1	AUG 2016	BS
DRAWING NUMBER	REVISION	
5205/ASP.PAV.TPD.3.3	B	