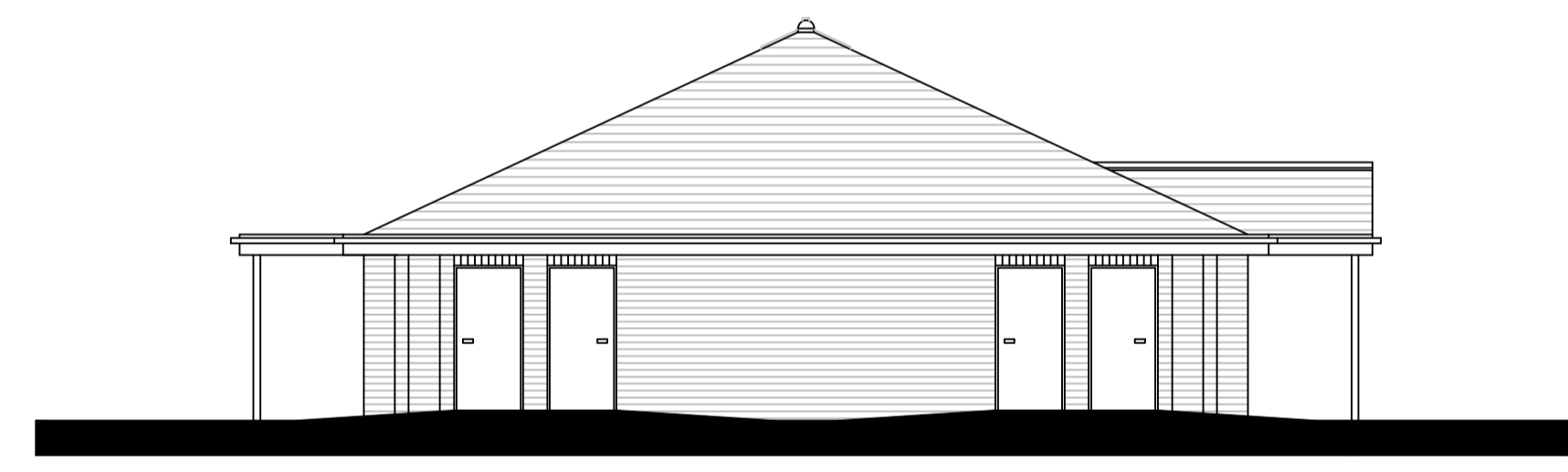
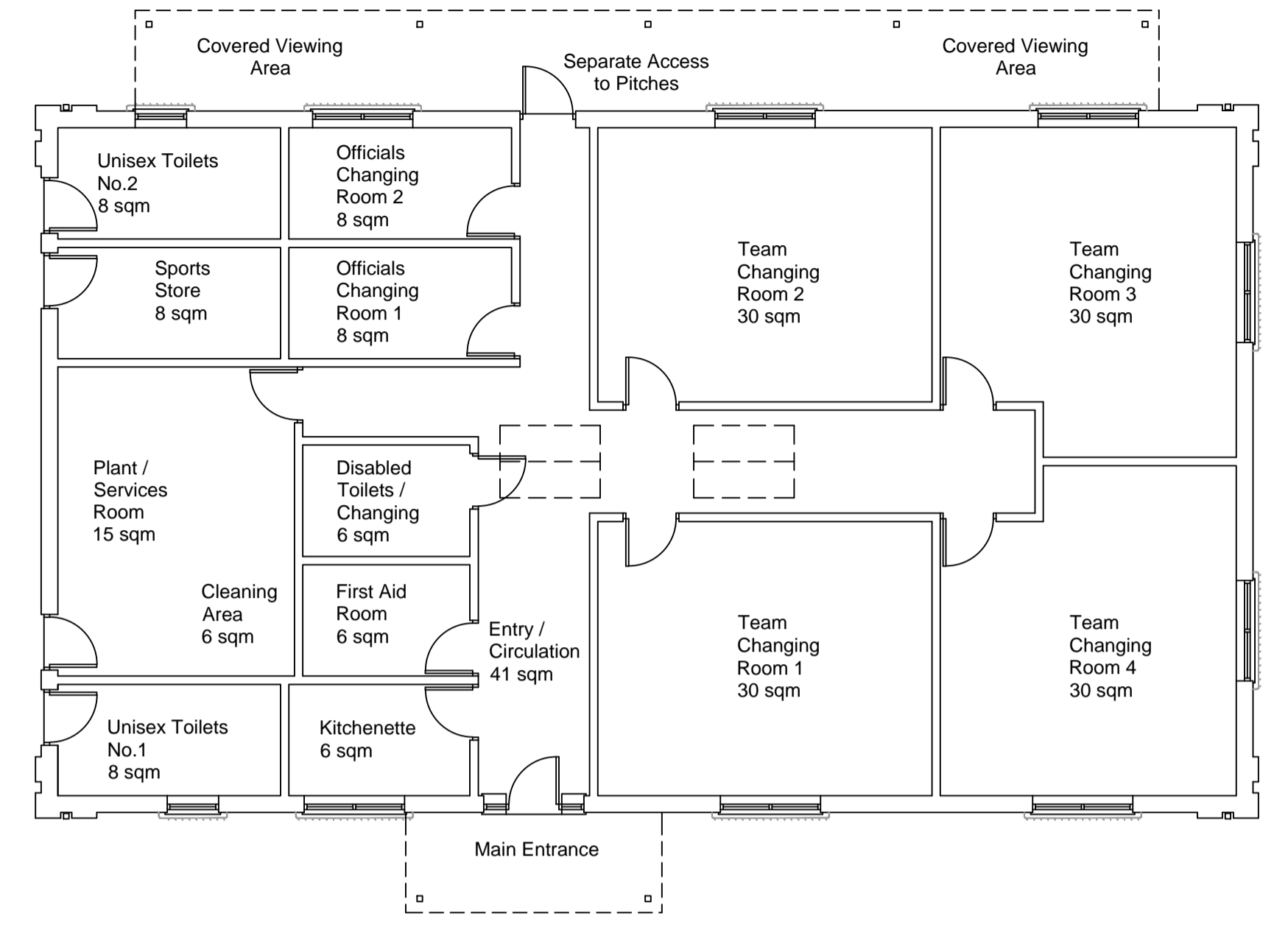
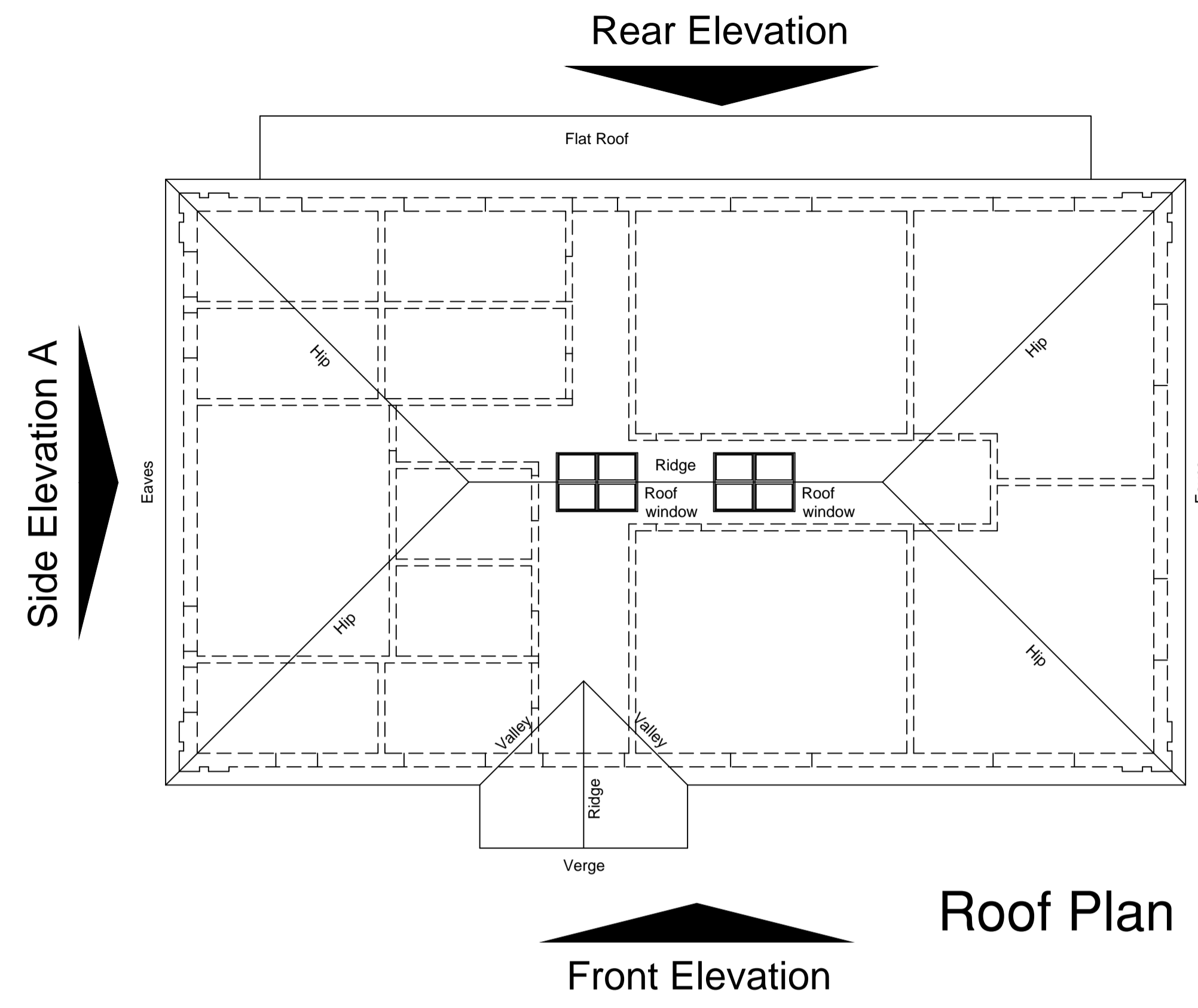
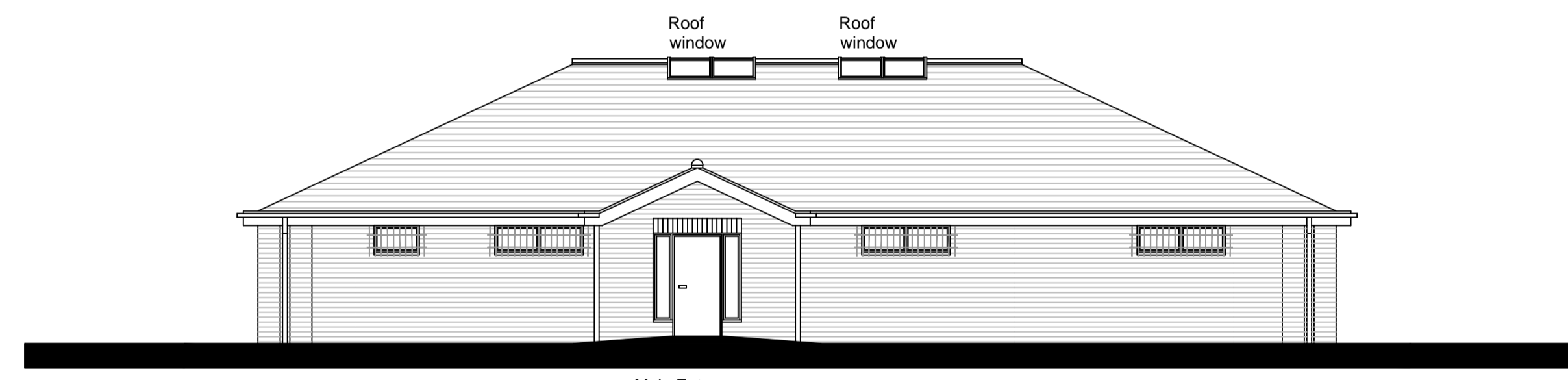


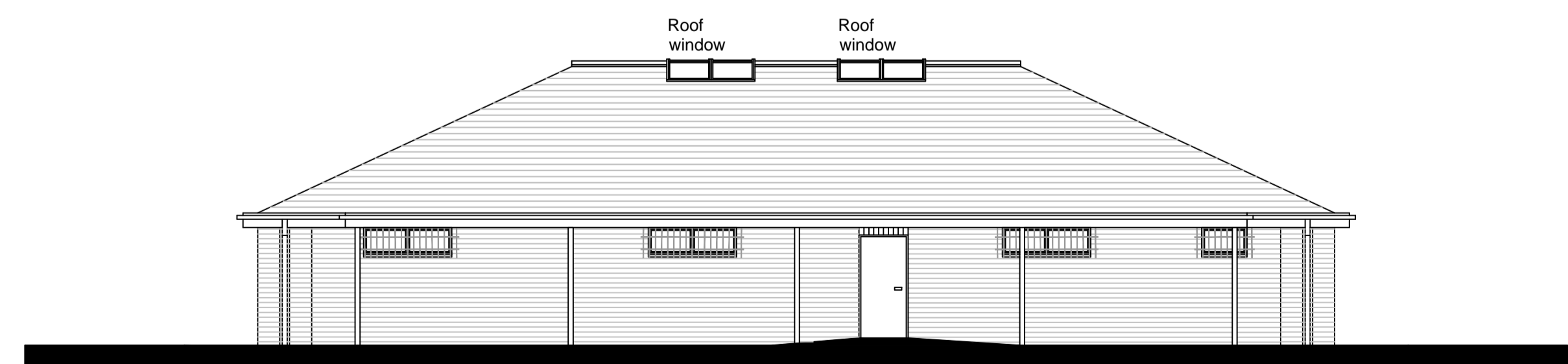
IMPORTANT
 THE COPYRIGHTS TO THE DESIGN ON THIS DRAWING REMAINS THE PROPERTY OF THE ARCHITECTS. THE CONTRACTOR, SUB-CONTRACTORS AND SUPPLIERS MUST VERIFY ALL DIMENSIONS, LEVELS, PLUMB HEIGHTS, STEPS & OPENINGS ON SITE BEFORE COMMENCING SHOP DRAWINGS AND/OR THE FULL REQUIREMENTS OF MUNICIPAL AND/OR OTHER LOCAL AUTHORITIES MUST BE ADHERED TO.



Side Elevation A



Front Elevation



Rear Elevation



Side Elevation B

Schedule of Materials

Walls:
Ibstock Alderley Orange.

Roof:
Sandtoft 20/20 Antique Slate interlocking plain clay tile to match 'Roofing 1, Plateau Specification.'

Doors and Windows:
Painted grey metal.

Rainwater Goods:
Square section profile, black PVCu.

Rev.	Date	Revision

ABACUS
 CHARTERED ARCHITECTS LLP
 26 VICTORIA ST
 HOCKLEY
 BIRMINGHAM B1 3PE
 TEL. 0121 608 3700 FAX. 0121 608 3003
 e-mail : email@abacusarchitects.co.uk

Development
Longford Park Sports Changing Facility

Title
Sketch Scheme: Floor Plan, Roof Plan and Elevations

Scale 1:100 @ A1 size
 Date March 2014 | Drawn RJJ

Drw. no 1419 | 500 | Rev S

A: 03Oct14: Graphical adjustments.
 B: 23Jan15: Additional windows added. Piers added around main entrance door.
 C: 05Feb15: Key Plan added.
 D: 14Apr15: Building repositioned. Parking layout altered.
 E: 24Apr15: Building handed. Parking layout altered.
 F: 14June15: Weathervane replaced with roof windows. Planting added.
 G: 18June15: Planting removed.
 H: 22June15: Weathervane note removed.
 J: 23Aug15: Covered Porch added. Doors to Unisex Toilets moved. Plant / Cleaning layout adjusted. Glazed panels added to Main Entrance. Key Plan removed.
 K: 18Sept15: Key Plan added.
 L: 25Sept15: Latest spine road layout.
 M: 28Sept15: 1 no. parking bay removed.
 N: 17Feb 16: Road layout altered. Building re-positioned, rear flat roof canopy introduced. Planting & soft landscaping.
 P: 22Feb16: Covered Viewing Area noted.
 R: 29Feb16: Building relocated. Parking reconfigured. Access to car park relocated.
 S: 01Mar16: Key Plan - Sports Store and Plant Room notes repositioned.