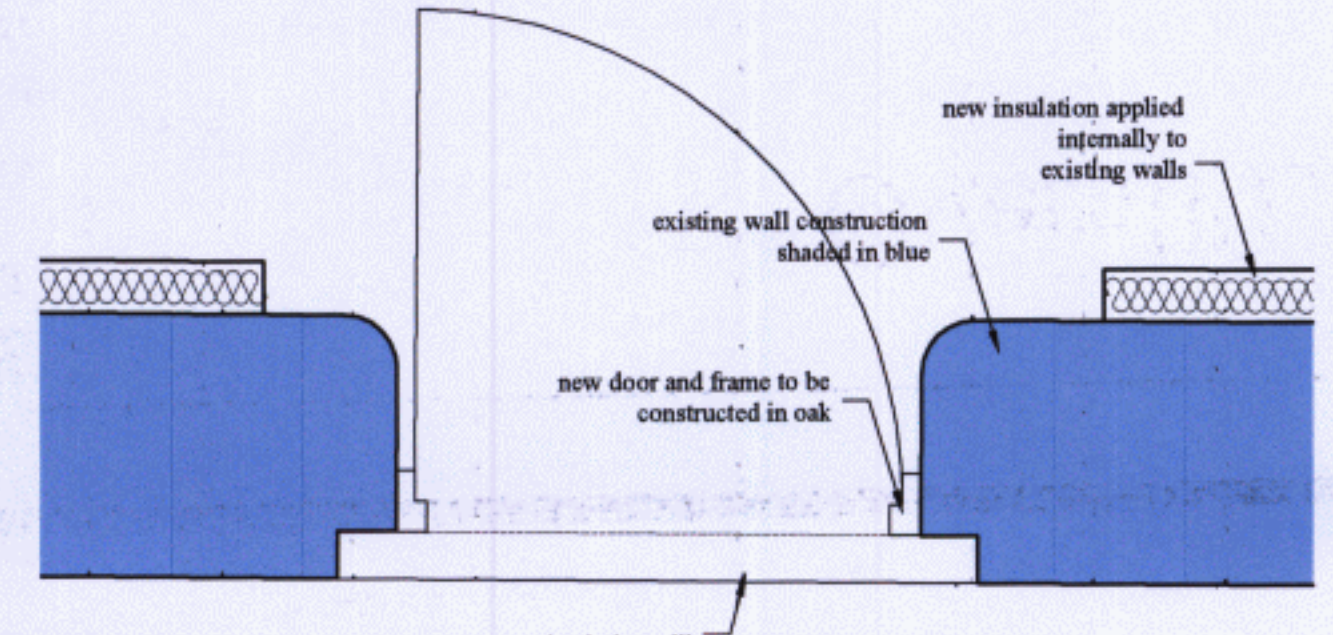
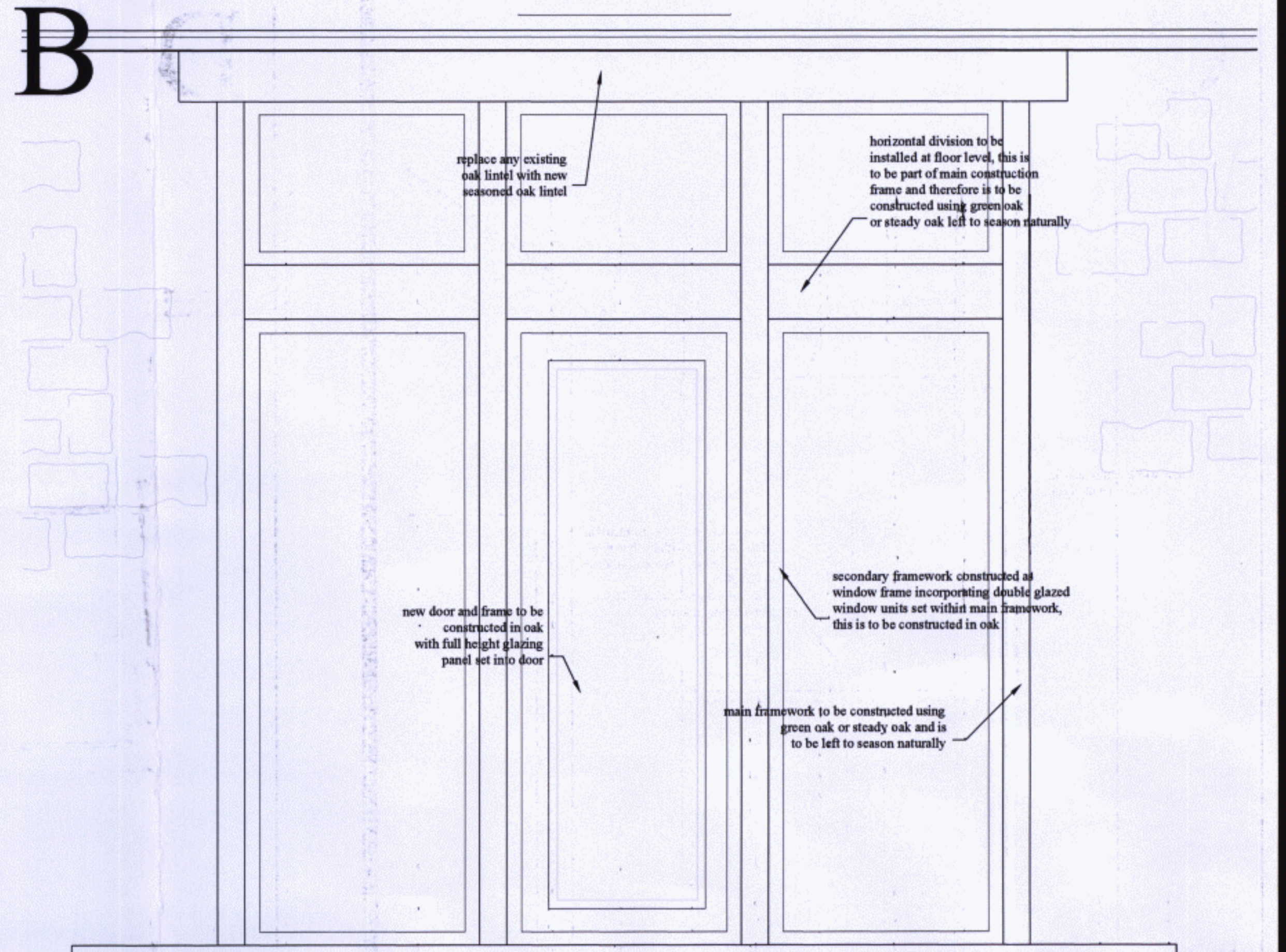


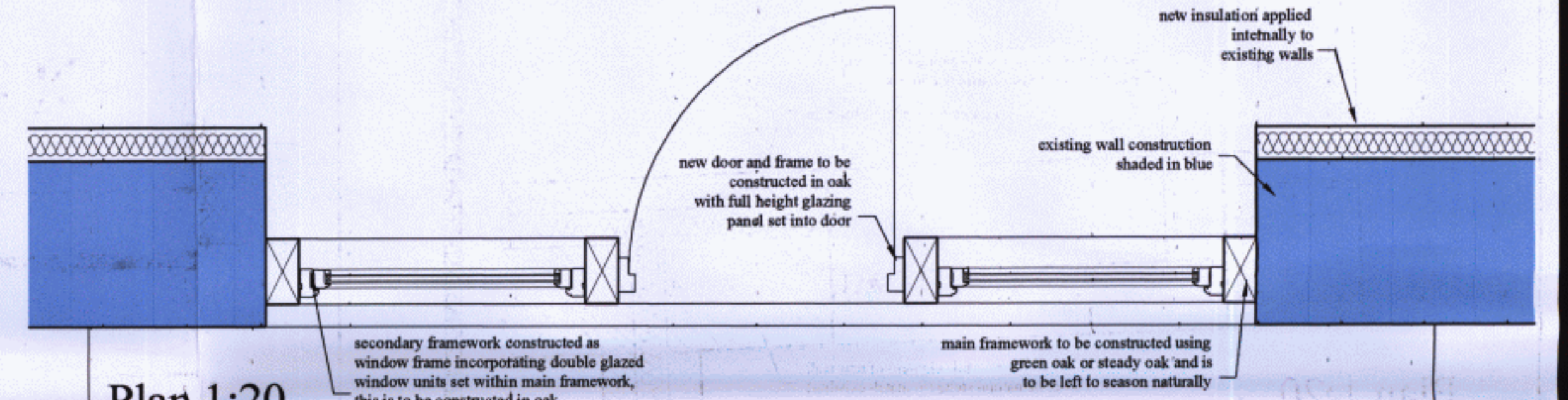
Elevation 1:20



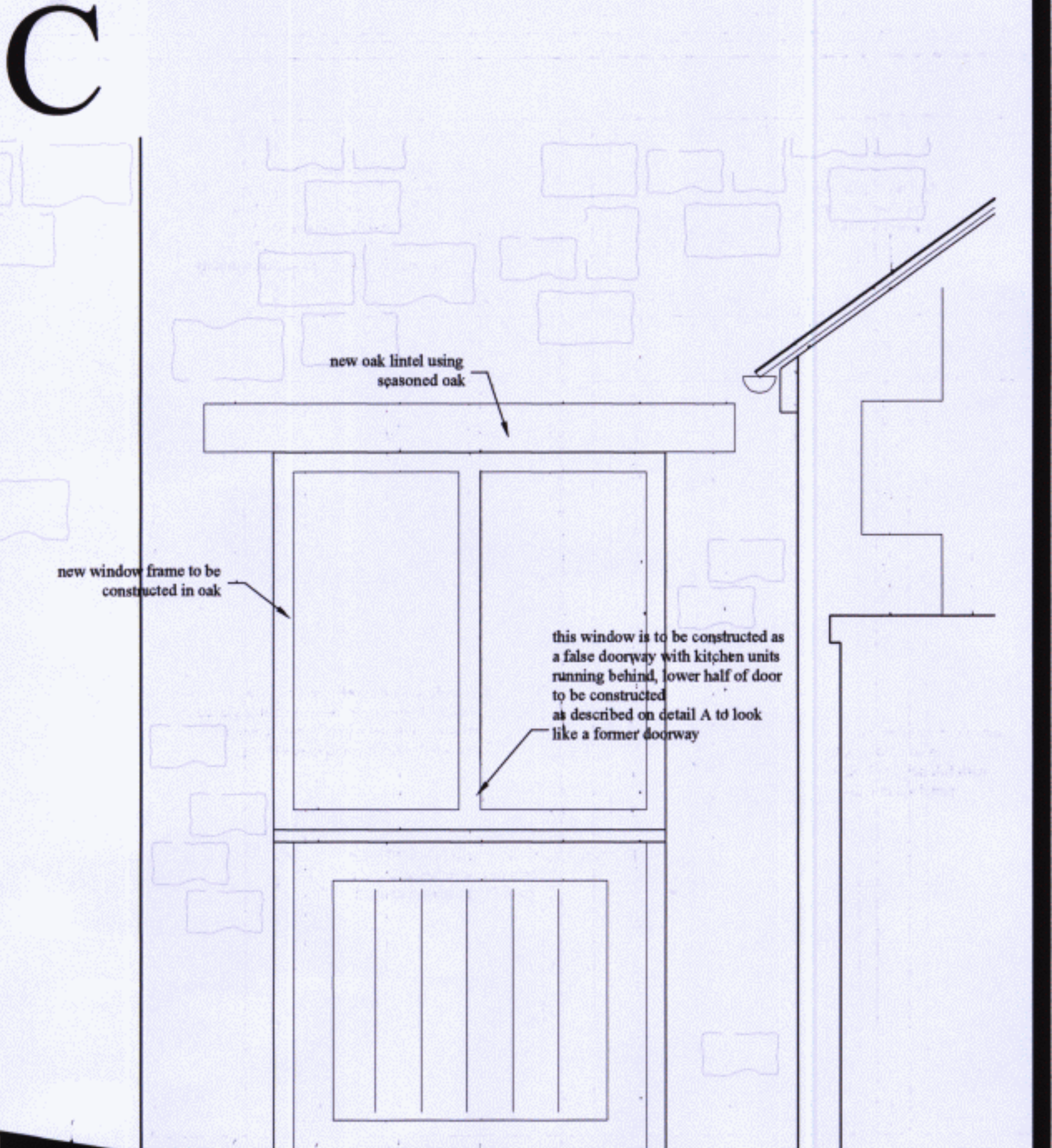
Plan 1:20



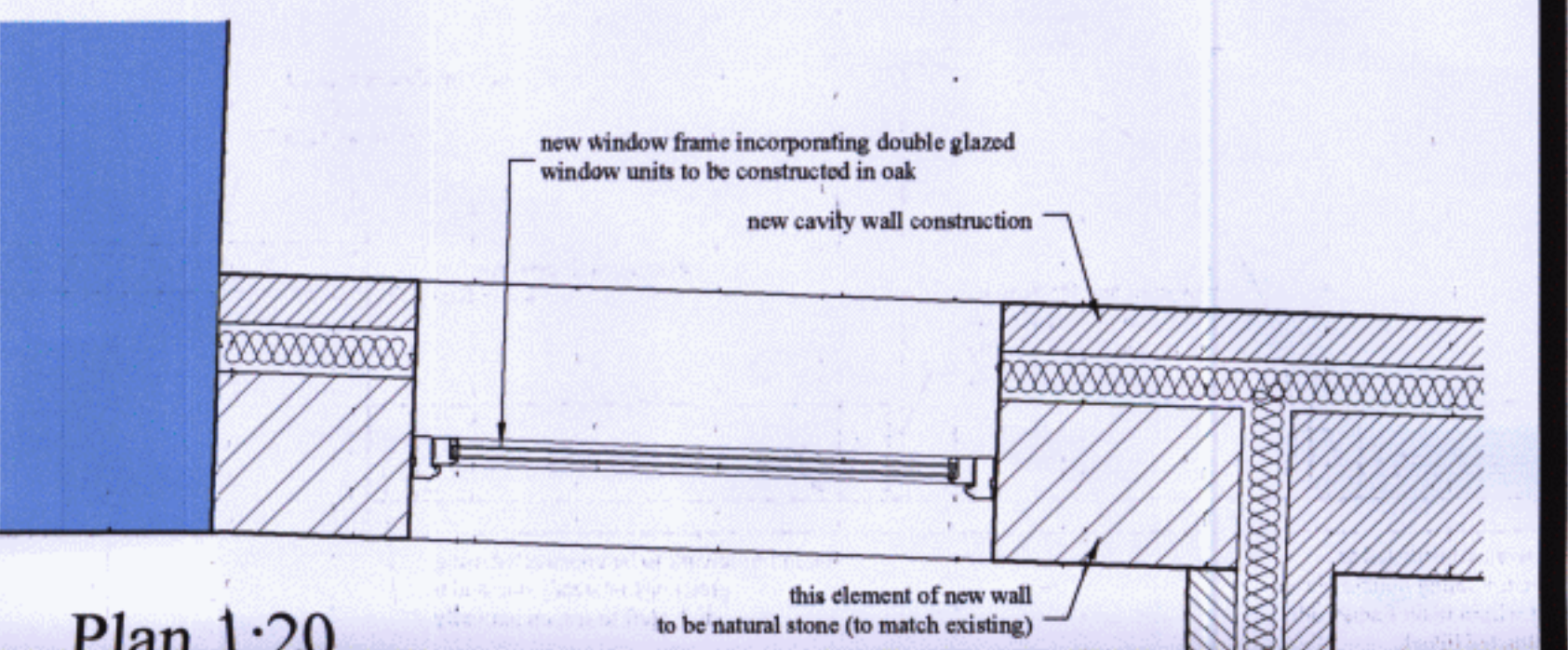
Elevation 1:20



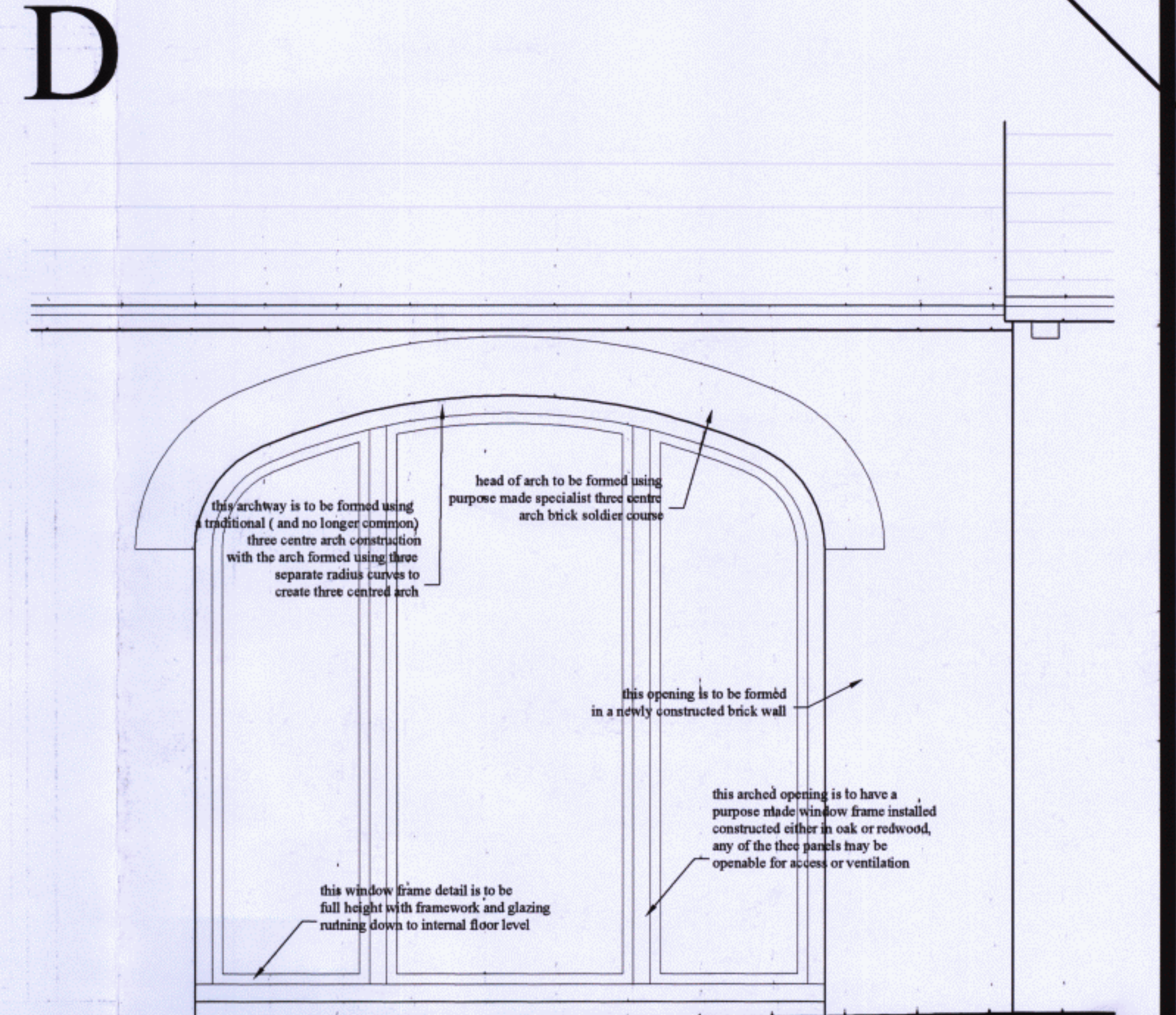
Plan 1:20



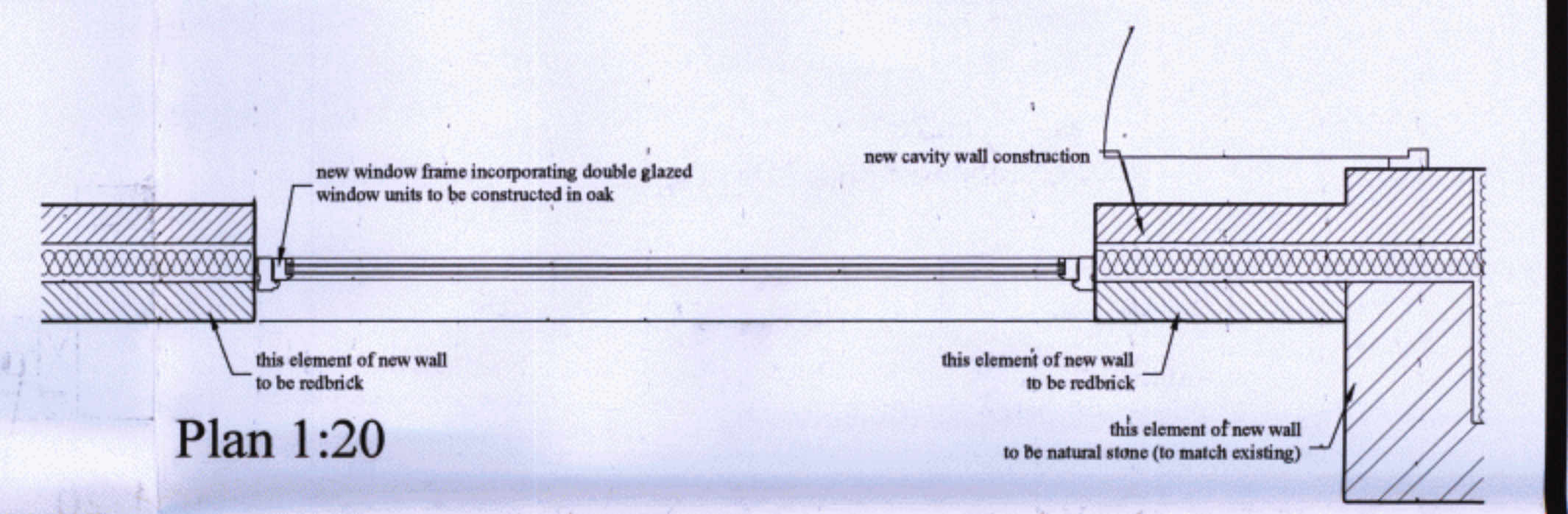
Elevation 1:20



Plan 1:20

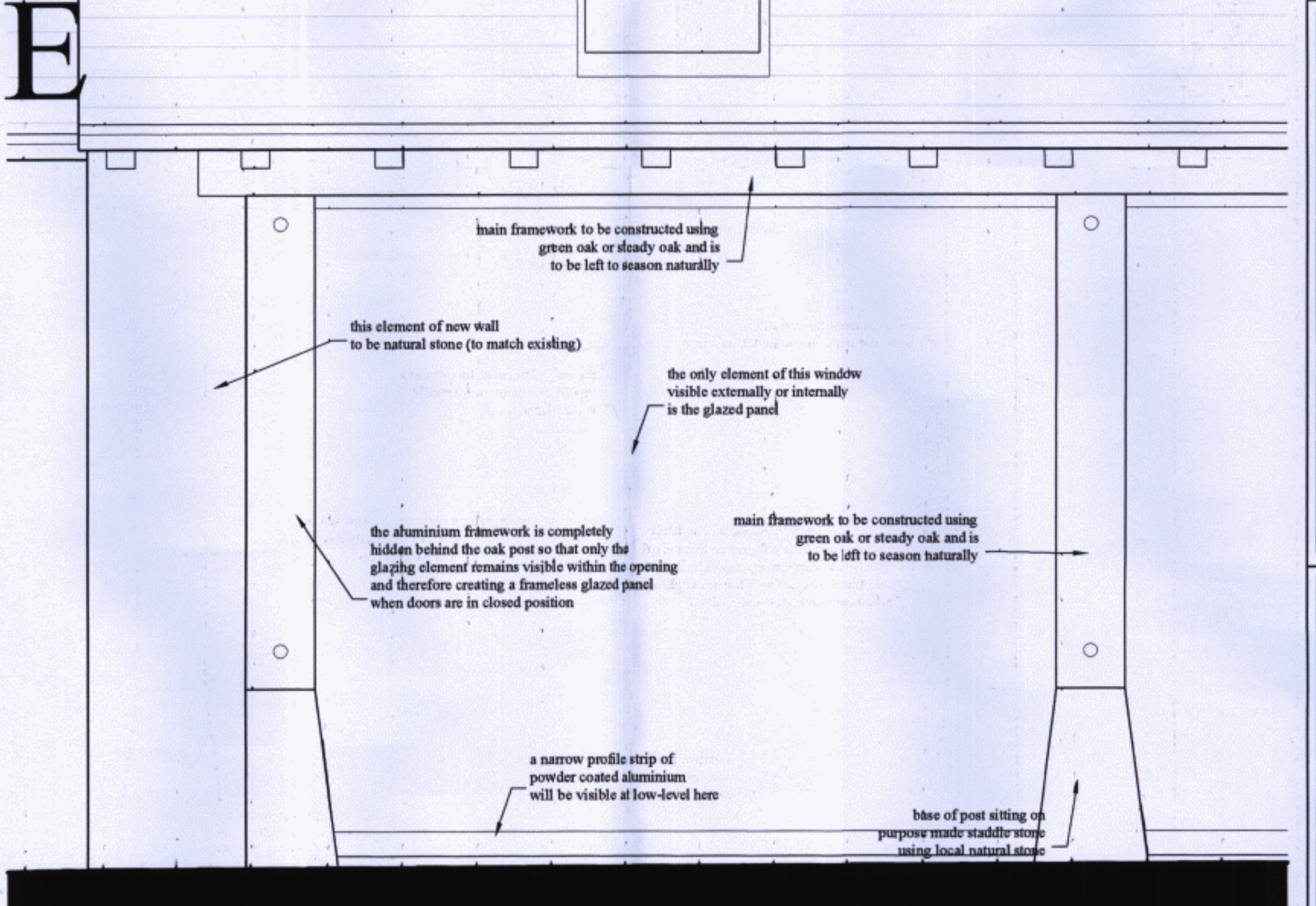
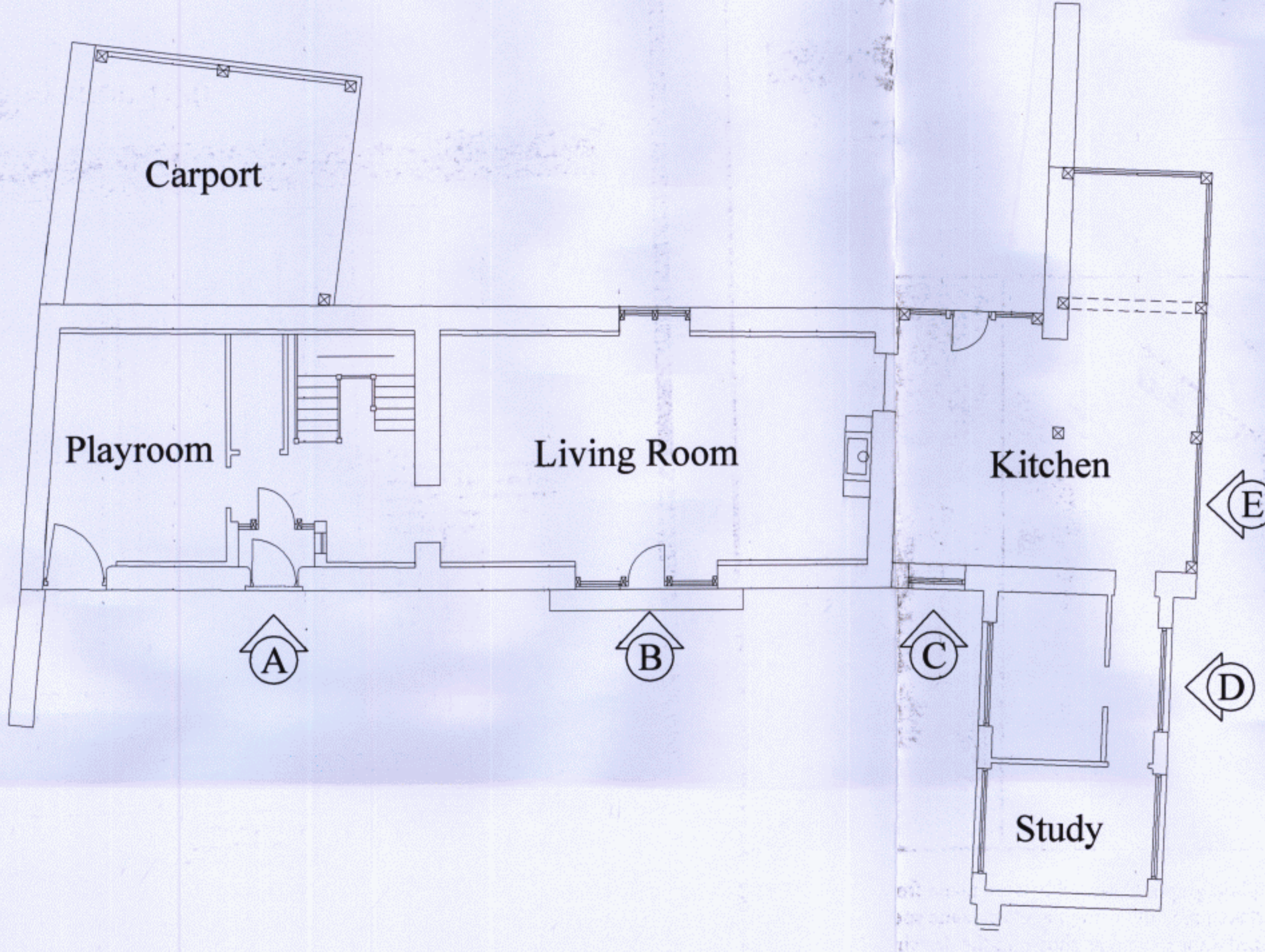


Elevation 1:20

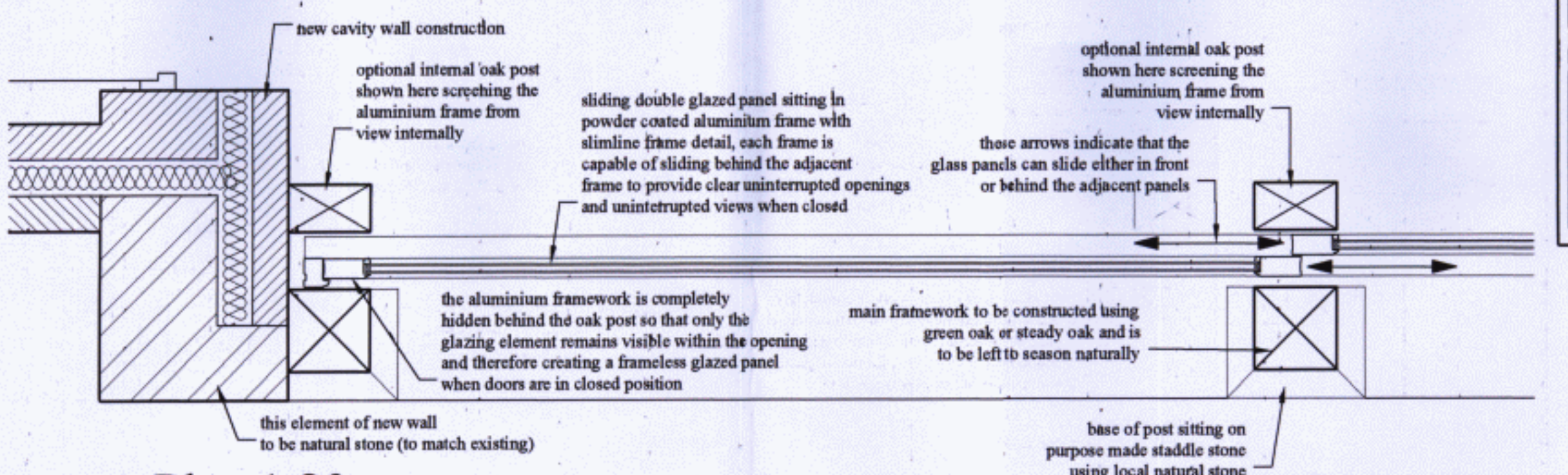


Plan 1:20

Overall Layout Key



Elevation 1:20



Plan 1:20



The photographs shown above are taken from a barn conversion undertaken recently using the exact same specification and sliding glazed door system as shown in the drawings to the left. these photographs demonstrate that the aluminium frame remains virtually invisible and retains the open nature feeling of the oak frame structure

This drawing has been prepared to clear condition number 5 in relation to planning approval 13/00930/F, this condition requests designed details of doors and windows at a scale of 1:20.

The openings included on this drawing are shown on the overall layout key to the left-hand side, these represent an example of each type of new opening.

Condition Clearing Drawing
1:20 Details of Doors and Windows

STABLE ARCHITECTURE
 JEREMY DUNN · MOBILE
 17 FIR TREE CLOSE · BANBURY · (07710)
 OXON OX16 1JS · 461860
 TELEPHONE (01295) 270565
 E mail - Jeremy.Dunn@Virgin.net

Job: Barn Conversion:
Haynes Barn
Sibford Gower
14/06/2014/dsc

Client: Mr. W. Sabin
c/o Stable Architecture

Drawing No: 5569-07 Date: 6-8-2014 Scale: 1:20 @A1