

IMPLEMENTATION AND MAINTENANCE GUIDELINES

1.0 GENERAL

All plants shall conform to BS 3936 and be in accordance with the National Plant Specification. Sourcing nurseries shall be regulated under the HTA. Nursery Certification Scheme. All plants shall be packed and transported in accordance with the Code of Practice for Plant Handling as produced by CPRE. Planting shall not be carried out when the ground is waterlogged, frostbound or during periods of cold drying winds. All bare root stock shall be root dipped in an approved water-retaining polymer.

If the formation level is compacted it should be tipped through before topsoiling.

Recommended topsoil depths are 300mm for shrubs and 150mm for grass.

2.0 ORNAMENTAL SHRUBS AND TREES

2.1 Ground Preparation
Where necessary, treat existing weeds with a glyphosate based herbicide and allow a suitable period as recommended by the manufacturer for this to take effect. A general purpose slow release fertiliser at the rate of 10g/m² and Tree Planting and Mulching Compost at the rate of 20kg/m² are to be incorporated into the top 150mm of topsoil during final cultivation. All extraneous matter such as plastic, wood, metal and stones greater than 50mm in any dimension shall be removed from site.

Tree pits to the specified size are to be excavated and the base broken up a further 150mm with the sides well surfaced to prevent smearing. All trees up to and including selected diameters are to be supported with single 75mm diameter stakes. All non-bark coated 'grow and trees' over theory standard size shall be double staked. Stakes should be driven 500mm into undisturbed ground before planting the tree, taking care to avoid underground services and cables etc.

2.2 Planting
Shrubs and hedges are to be set out as shown on the drawing and pit planted into the prepared soil at specified centres with minimal disturbance to the soil and well finished.

Trees are to be placed into the pits and backfilled with topsoil incorporating slow release fertilizer and Tree Planting and Mulching Compost as specified. Firm trees in well and secure with necessary stakes and ties and caps.

Water in all trees and shrubs at the end of each day of planting.

Spread ornamental pine bark mulch to a depth of 75mm across all new planting areas, ensuring groundcover plants are not buried.

2.3 Maintenance
The landscape contractor shall maintain all areas of new planting for a period of 12 months following practical completion. All stock deemed to be dead, dying or diseased within the defects period shall be replaced by the contractor at his own cost.

The site is to be visited monthly throughout the year to undertake the following operations:
Weed clearance: All planting areas are to be kept weed free by hand weeding or herbicide treatment.
Liner clearance: All litter is to be removed from planting beds.
Watering: Planting areas are to be brought up to field capacity at each visit and each tree to receive 20 litres.
Checking trees: All tree tags and stakes are to be checked and adjusted too loose, too tight or chafed to be occurring. Any broken stakes are to be replaced.
Formative pruning: Any damaged shoots/branches are to be pruned back to healthy wood. Plants are to be pruned in accordance with good horticultural practice to maintain healthy well-shaped specimens.

3.0 GRASS

3.1 Preparation
The area to be turfed or seeded shall be sprayed out with a glyphosate herbicide and cultivated to a depth of 100mm removing all weeds, debris and stones over 25mm diameter. The surface shall be raked to smooth firm contours with a fine 18th, incorporating pre-seeding fertiliser at 70 g/m².

3.2 Delivery and Storage
Turf shall be supplied in accordance with BS 3936.

Turf shall be Mowden as supplied by Rowlett. It shall be close textured and green in colour and be sufficiently fibrous to withstand handling. Turves shall be regular in shape, 300mm wide and of uniform thickness (maximum 25mm). The grass shall be closely mown and shall not exceed 25mm in height.

Turf shall be stacked in piles of up to 1 metre. It shall not be laid in trays or waterlogged conditions and shall not be stacked in rolls for more than three days.

3.3 Turfing operations shall be in accordance with BS 4428

Without turves shall be laid around the perimeter of the area to be turfed. The central area shall be laid in rows with staggered joints, well luted together, working from plants positioned on turves always laid. The turf shall be worked on completion. Any unevenness shall be made good by lifting the turf and adjusting the levels. Should shrinkage occur, fine spind shall be tracked into the joints.

3.4 Seeding
Grass seed shall be sown in April during calm weather and not when the ground is frost bound or waterlogged. Seed shall be sown in two equal sowings in transverse directions at 35 g/m². After sowing the contractor shall lightly rake the seed into minimum contact with the soil.

3.5 Mow out
When newly seeded and turfed areas reach 50mm they should be lightly rolled and cut to a height of 20mm. All arrangements shall be removed. Any bare patches shall be made good at this time. Seeded areas shall be cut for a second time when the sward reaches 50mm high.

4.0 PLAY EQUIPMENT & FITNESS TRAIL SCHEDULE

1. Fallen tree trunk and stepping logs/stumps
2.0m long soft wood tree trunk (for seating and climbing) to be trimmed & prepared for use by public. Supplied by Streetscape Product & Services Ltd or similar approved play manufacturer. To be installed within concrete footings (SEN 2). Supplied by an approved play manufacturer.

2. Stepping Logs
TT4 - Stepping Stones (timber), supplied by Streetscape Product & Services Ltd or similar approved play manufacturer.

F1. Commi bike & Stepper
SD304a Commi bike and stepper, supplied by Streetscape Product & Services Ltd or similar approved play manufacturer.

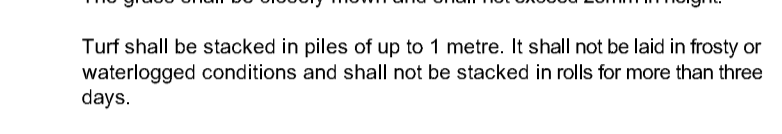
F2. Multi Traction
SD290 Multi traction, supplied by Streetscape Product & Services Ltd or similar approved play manufacturer.

F3. Air Walker
SD120a Air walker, supplied by Streetscape Product & Services Ltd or similar approved play manufacturer.

F4. Body Building Trainer
SD300 Body Building Trainer, supplied by Streetscape Product & Services Ltd or similar approved play manufacturer.

All play & fitness equipment and layout proposals to be specified in accordance with the requirements set out under BS EN 1176 and the Disability Discrimination Act. Following the agreement of play equipment and the general arrangement the selected manufacturer's details will be submitted to the local council for approval along with the finalised proposals and accompanying certificates and details.

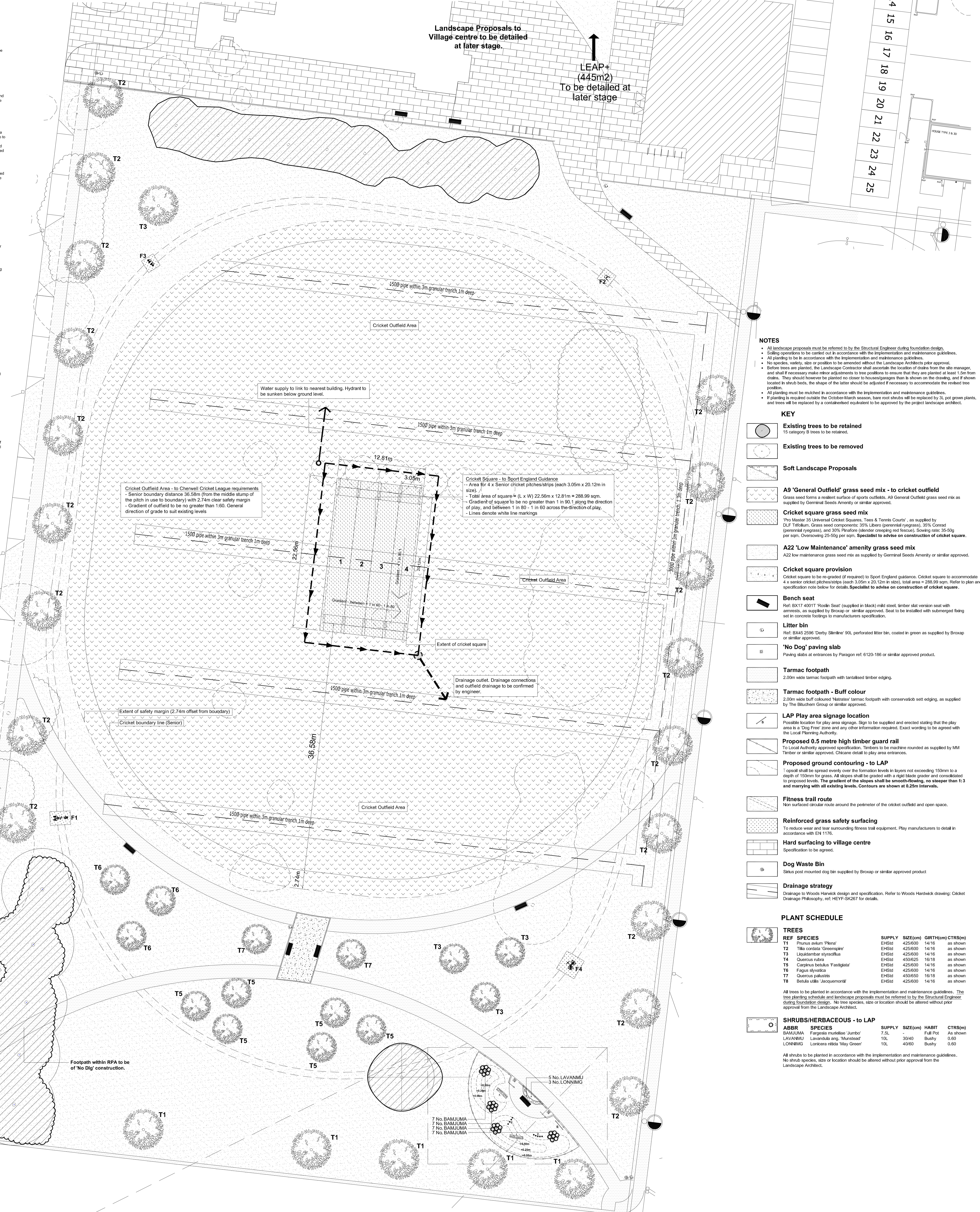
LAP play equipment



1. Play Log
2. Stepping logs

F1. Commi bike & Stepper
F2. Multi Traction
F3. Air Walker
F4. Body Building Trainer

© Copyright Pegasus Planning Studio Ltd. All rights reserved. Other than Source Copyright. License number 10042001 | Phone: 01232 338970
Pegasus Landscape Design and Pegasus Planning Studio Ltd. Company registered in England. Any website not explicitly approved by Pegasus.



Village Green Landscape Proposals
Scale 1:200

KEY (cricket square drainage on plan)

- Proposed 100mm diameter main drain
- Proposed 100mm diameter perimeter drain
- Inspection chamber
- Hydrant (water) box

KEY (cricket square drainage detail)

- Perforated corrugated plastic pipe drainage provided in accordance with BS 4962. Pipe to be surrounded with Terram 1000 geotextile membrane or similar approved.
- 6-10mm clean, hard, gravel or chippings, free of fines with a terram separation layer to stop the cricket pitch settling and gravel being lost into the existing clay soil. Terram 1000 geotextile or similar approved to be used.
- 50mm blinding layer of coarse sand or fine grit.
- Topsoil provided in accordance with BS 3882.

Village green drainage and levels to be determined by project drainage engineer.

NOTE:
-Drainage proposals in accordance with Sports England Natural turf for sport design guide 2011.
-Drainage system to be designed and connected by drainage engineers.

SOILS
Depth of topsoil to be a minimum of 200mm on 200mm minimum depth of subsoil.

The cricket square will be excavated and replaced with approved cricket loam to an appropriate club standard as identified by the ECB and Sports England Natural turf for sport design guide 2011 of 25-28% clay content. Where existing top soil is unsuitable, make allowance for importing cricket topsoil from a specialist supplier. The imported topsoil must be the indigenous topsoil.

CRICKET SQUARE SPECIFICATION

All earthworks are to be carried out in accordance with the information contained within BS 4428. It is the responsibility of the Contractor to ensure that all subsoil and topsoil is suitable for the intended purpose. Where soil does not meet the required standards or specifications set out in BS 4428 and BS 3922 the Contractor is to inform the Client and make a request for suitable material to be made available to carry out the works. When the works are completed using unsuitable materials these will be removed and replaced to the Client's satisfaction at the expense of the Contractor. Excavate topsoil to required depth, normally 100-150mm. No subsoil should be exposed with the topsoil. The exposed subsoil can be excavated to achieve a depth of 220mm. Subsoil shall then be accurately graded to allow for build up of drainage layers, blinding layer and cricket loam. The formation level should be evenly consolidated with a tolerance of +/- 10mm. All topsoil and subsoil construction to be covered to enable it to be consolidated every 150mm by treading technique method. Consolidation is the most important element of the construction process and should be executed carefully. Should an alternative method be used by the contractor this is to be approved by the Client prior to construction. All levels to be kept to and all pocket removed providing a uniform surface finish. Levelling and construction can be achieved with levelling pegs or laser levelling equipment and the standard treading method of consolidation to be used to attain final levels. A roller will not be acceptable as this can have lateral effects. The final surface will achieve a tolerance of +/- 10mm should be kept along the line of play with a cross fall of 1:150. The square should be laid smoothly into the outfield and be finished ground of the surrounds by 25mm to allow for water runoff and prevent standing water through severe rainfall that can be damaging to the grass sward.

The square is not to be turfed. Grass coverage will be established by seeding using appropriate cultivars of suitable grass species at a rate of 50g/m². Seed Mixes:
Pro Master 35 Universal Cricket Squares, Tees & Tennis Courts, as supplied by DUF Turfukam. Grass seed components: 35% Lolium (perennial ryegrass), 35% Poa (perennial ryegrass), and 30% Phleum (sheep's fescue) not fescue). Sowing rate: 35-50g per sqm. Overseeding 25-50g per sqm. Specialist to advise on construction of cricket square.

35% Lolium (perennial ryegrass)
35% Poa (perennial ryegrass)
30% Phleum (sheep's fescue)

Inset Plan: LAP play space
Scale 1:100

Inset Plan: Fitness Trail equipment

5 No. LAVANMU
3 No. LONNINGM

7 No. BAMJUMA
7 No. BAMJUMA
7 No. BAMJUMA
7 No. BAMJUMA

KEY (cricket square drainage on plan)

KEY (cricket square drainage detail)

PLANT SCHEDULE

TREES

REF	SPECIES	SUPPLY	SIZE(cm)	GIRTH(cm)	CTS(m)
T1	Prunus avium 'Pleura'	ENHSB	425/600	14/16	as shown
T2	Tilia cordata 'Greenheart'	ENHSB	425/600	14/16	as shown
T3	Liquidambar styraciflua	ENHSB	425/600	14/16	as shown
T4	Quercus robur	ENHSB	450/625	16/18	as shown
T5	Carpinus betulus 'Fastigiata'	ENHSB	425/600	14/16	as shown
T6	Fagus sylvatica	ENHSB	425/600	14/16	as shown
T7	Quercus palustris	ENHSB	450/650	16/18	as shown
T8	Betula ulula 'Jacqueline'	ENHSB	425/600	14/16	as shown

All trees to be planted in accordance with the Implementation and maintenance guidelines. The tree planting schedule and landscape proposals must be referred to by the Structural Engineer during foundation design. No tree species, size or location should be altered without prior approval from the Landscape Architect.

SHRUBS/HERBACEOUS - to LAP

ABBV	SPECIES	SUPPLY	SIZE(cm)	HABIT	CTS(m)
BAMJUMA	Fragaria muskoka 'Jumbo'	7.5L	Full Pot	As shown	
LAVANMU	Lavandula ang. 'Hummistad'	10L	30/40	Buhy	0.60
LONNING	Lonicera nitida 'Nelly Green'	10L	40/80	Buhy	0.60

All shrubs to be planted in accordance with the Implementation and maintenance guidelines. No shrub species, size or location should be altered without prior approval from the Landscape Architect.

Play equipment & fitness trail schedule

1. Fallen tree trunk and stepping logs/stumps
2.0m long soft wood tree trunk (for seating and climbing) to be trimmed & prepared for use by public. Supplied by Streetscape Product & Services Ltd or similar approved play manufacturer. To be installed within concrete footings (SEN 2). Supplied by an approved play manufacturer.

2. Stepping Logs
TT4 - Stepping Stones (timber), supplied by Streetscape Product & Services Ltd or similar approved play manufacturer.

F1. Commi bike & Stepper
SD304a Commi bike and stepper, supplied by Streetscape Product & Services Ltd or similar approved play manufacturer.

F2. Multi Traction
SD290 Multi traction, supplied by Streetscape Product & Services Ltd or similar approved play manufacturer.

F3. Air Walker
SD120a Air walker, supplied by Streetscape Product & Services Ltd or similar approved play manufacturer.

F4. Body Building Trainer
SD300 Body Building Trainer, supplied by Streetscape Product & Services Ltd or similar approved play manufacturer.

All play & fitness equipment and layout proposals to be specified in accordance with the requirements set out under BS EN 1176 and the Disability Discrimination Act. Following the agreement of play equipment and the general arrangement the selected manufacturer's details will be submitted to the local council for approval along with the finalised proposals and accompanying certificates and details.

LAP play equipment

TT4 - Stepping Stones
SD304a Commi bike and stepper
SD290 Multi traction
SD120a Air walker
SD300 Body Building Trainer

1. Play Log
2. Stepping logs
F1. Commi bike & Stepper
F2. Multi Traction
F3. Air Walker
F4. Body Building Trainer

Proposed Drainage Detail - Perimeter drain to square
Scale 1:10

Rev Description Date Team

Rev	Description	Date	Team
E	Architect's update	22/01/15	EV
D	Consultation and comments and final design	26/11/14	AP
C	Updated final design, energy and water contents	14/10/14	AP
B	Client comments related to water and energy content to CLC requirements	03/10/14	AP
A	Final design of play equipment and fitness trail equipment	23/07/14	AP

Heyford Park, Upper Heyford

Village Green - Detailed Landscape Proposals

Client: Dorchester Group
www.pegasusdg.co.uk
Team: AP15
03/07/2014
Scale: As Shown @A0
Bir.4322_18E

Pegasus Landscape Design