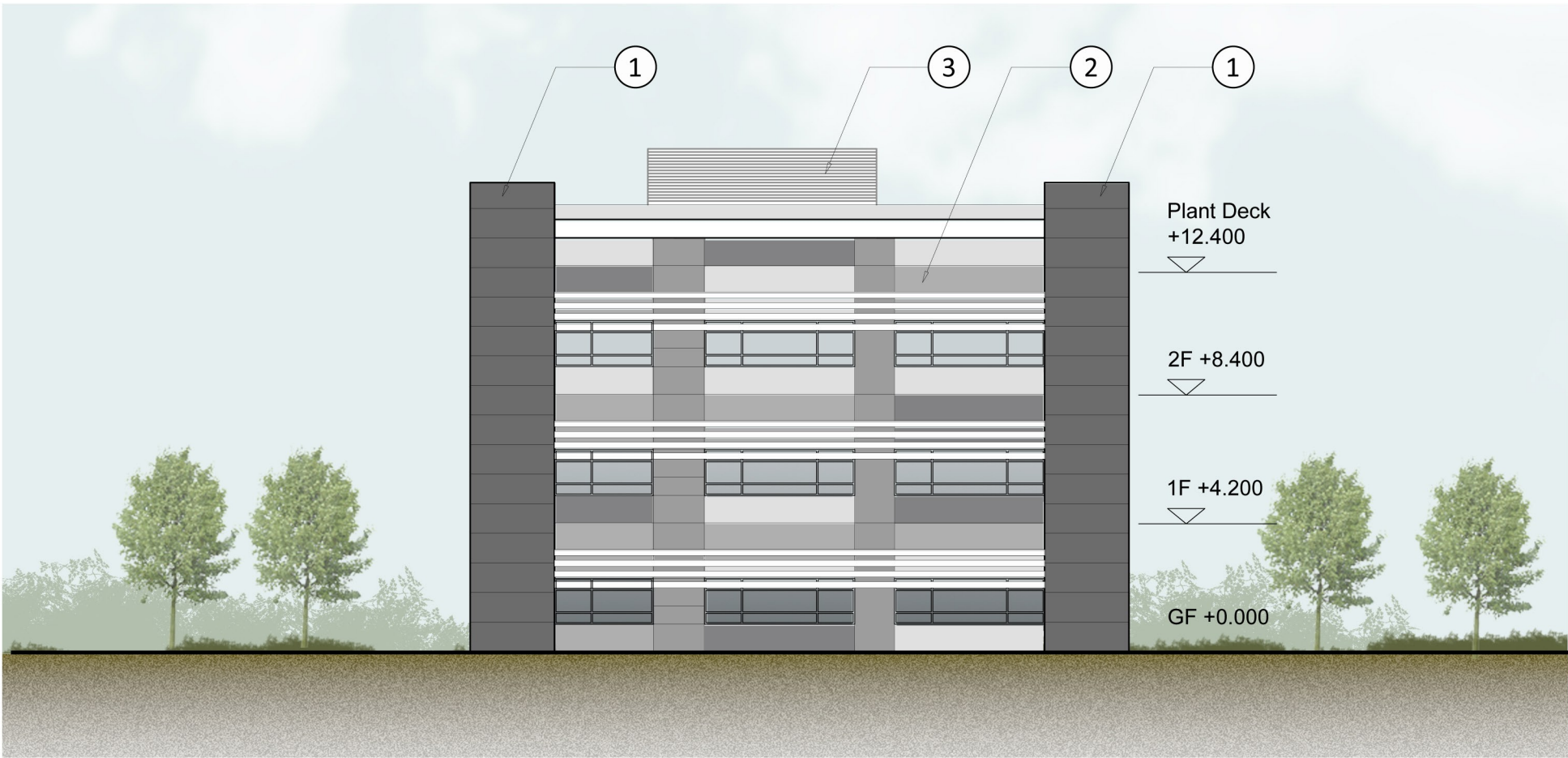
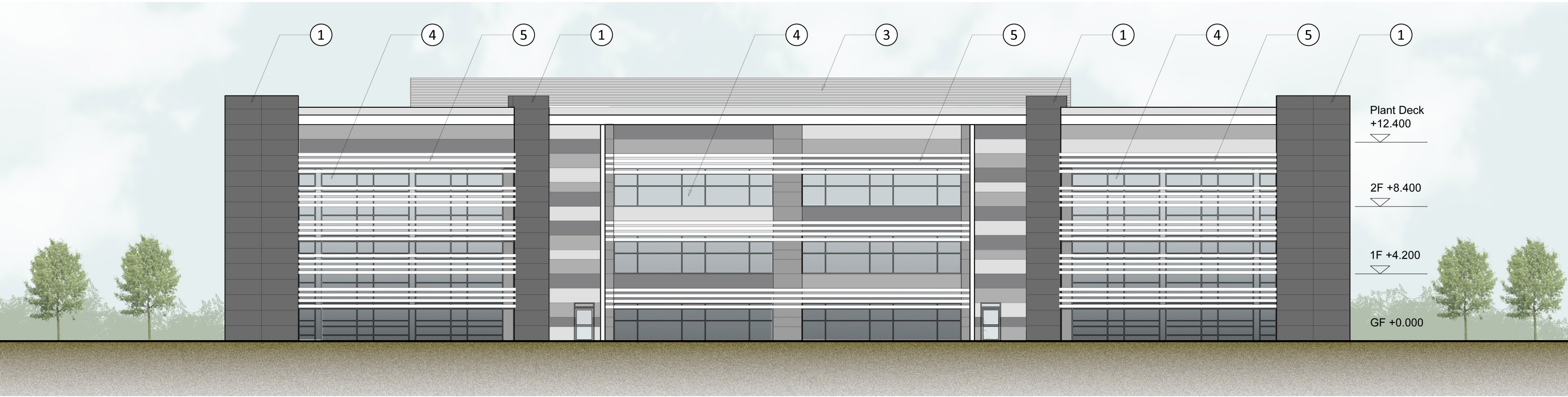


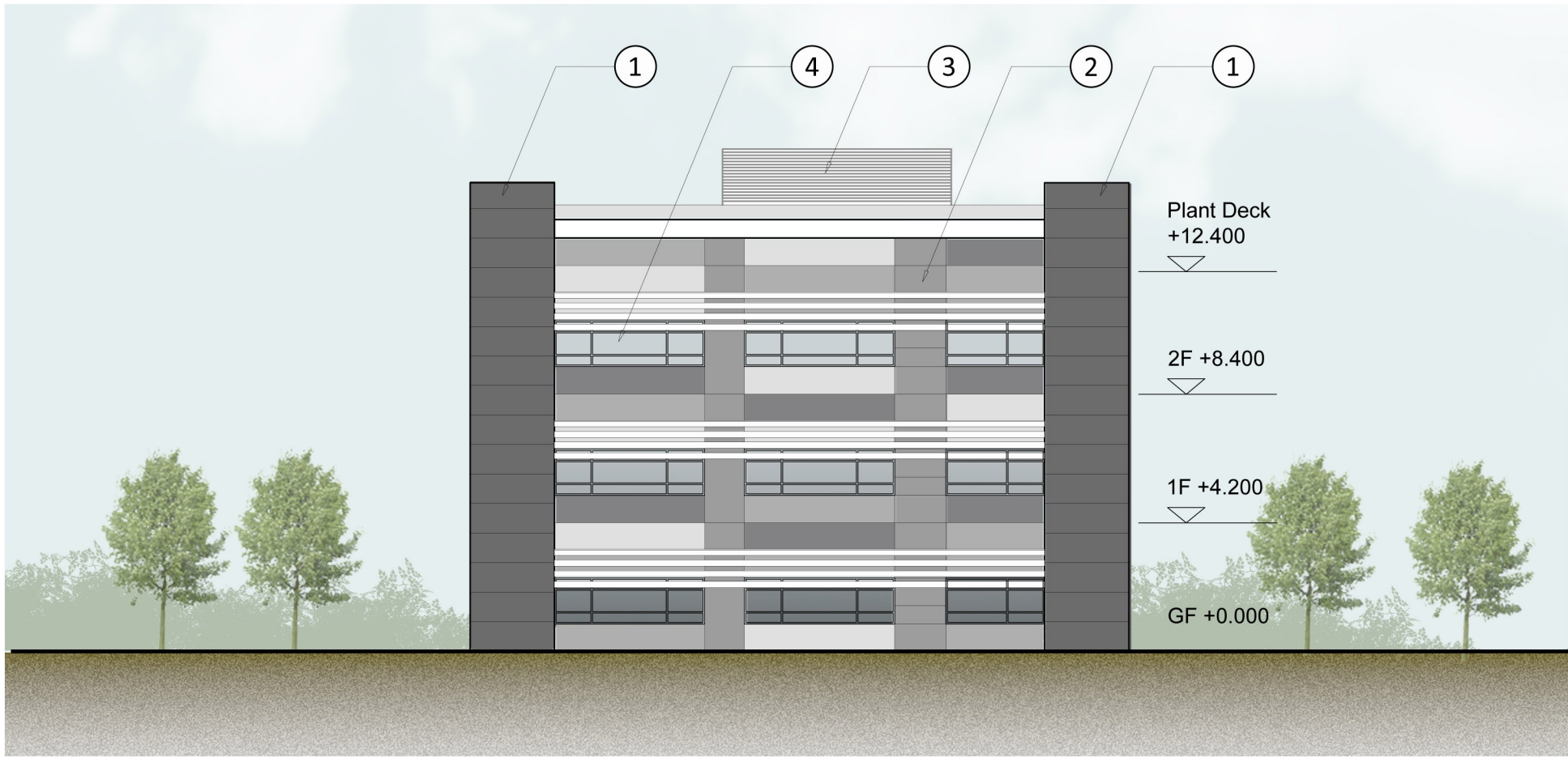
North Elevation 1:200 @ A1



West Elevation 1:200 @ A1



South Elevation 1:200 @ A1



East Elevation 1:200 @ A1

## Materials Key:

- ① Glass fibre reinforced concrete (or similar) cladding, colour to be dark grey.
- ② Kingspan (or similar) insulated Flat Panel cladding system with preformed corners, colours to be agreed.
- ③ Kingspan Long Span (or similar) Louvre profile insulated wall panel, colour to be agreed.
- ④ Fully thermally broken, polyester powder coated aluminium window system complete with factory sealed double glazed units, spandrel panels are to be Pilkington Spandrel Glass (or similar) opaque glass panels.
- ⑤ Aluminium fixed blade solar shading system to be suited to curtain wall system and incorporate brackets, flanges, supporting arms and connections to the curtain wall facade, colour to be agreed.

P2	Annotation added to Elevations.	AS	GH	27.11.14
P1	Colour added to Elevations.	AS	GH	25.11.14
rev	amendments	by	ckd	date

## Oxford Technology Park Unit 1 - Elevations



HILL STREET  
HOLDINGS



umc  
architects

Newark Beacon Innovation Centre, Cafferata Way, Newark, Nottinghamshire NG24 2TN  
t +44 (0)1636 653027 f +44 (0)1636 653010 e info@umcarchitects.com

Drawing Status:	PLANNING
Drawn:	AS
Date:	19/11/2014
Scale:	1:200 A1
Drawing no:	Revision:
13045 1006	P2