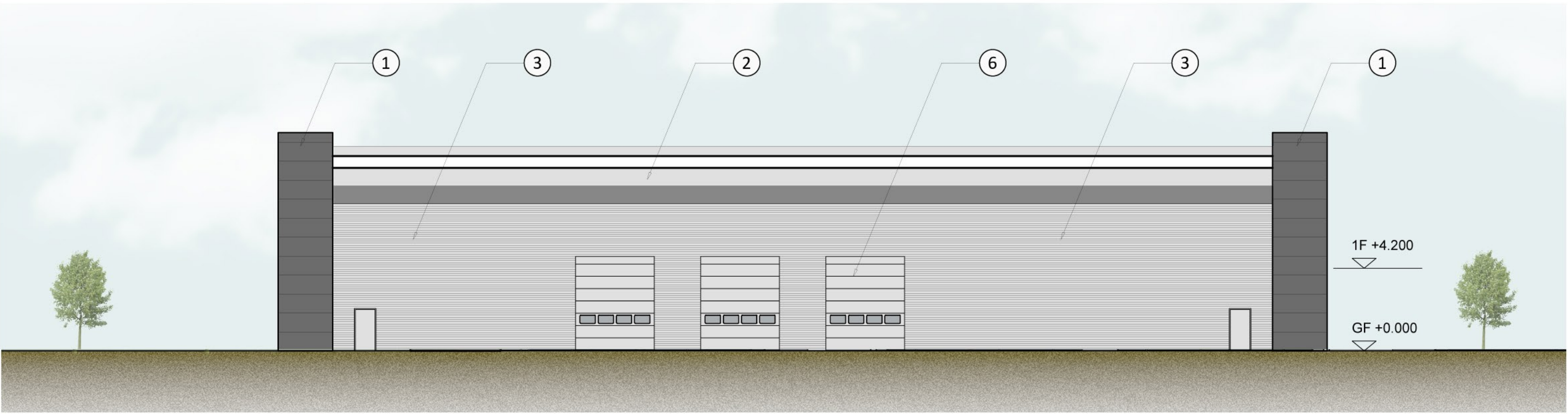
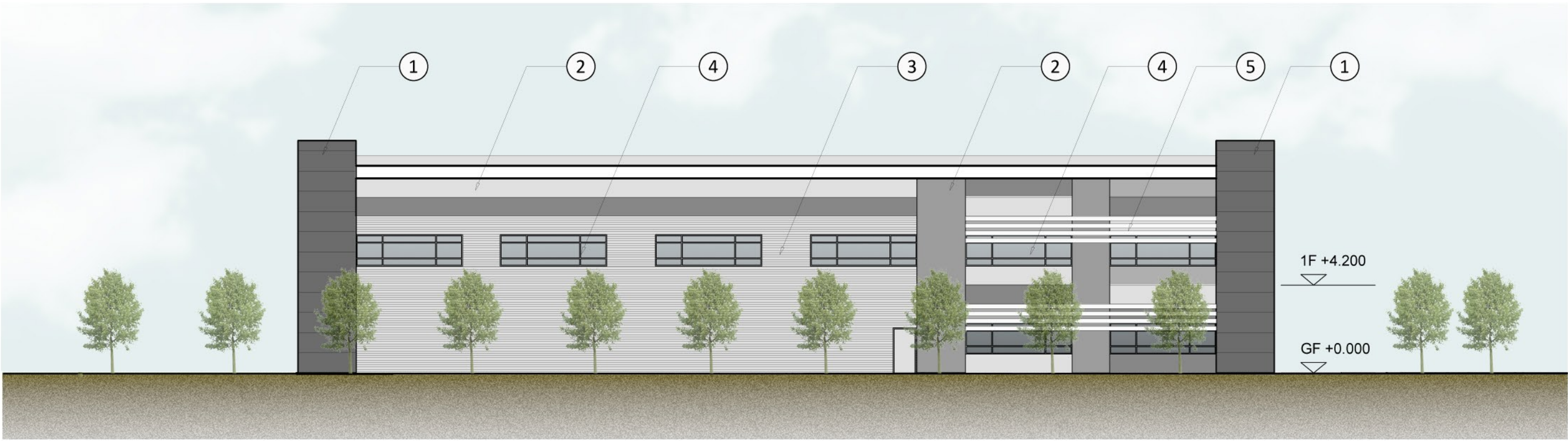


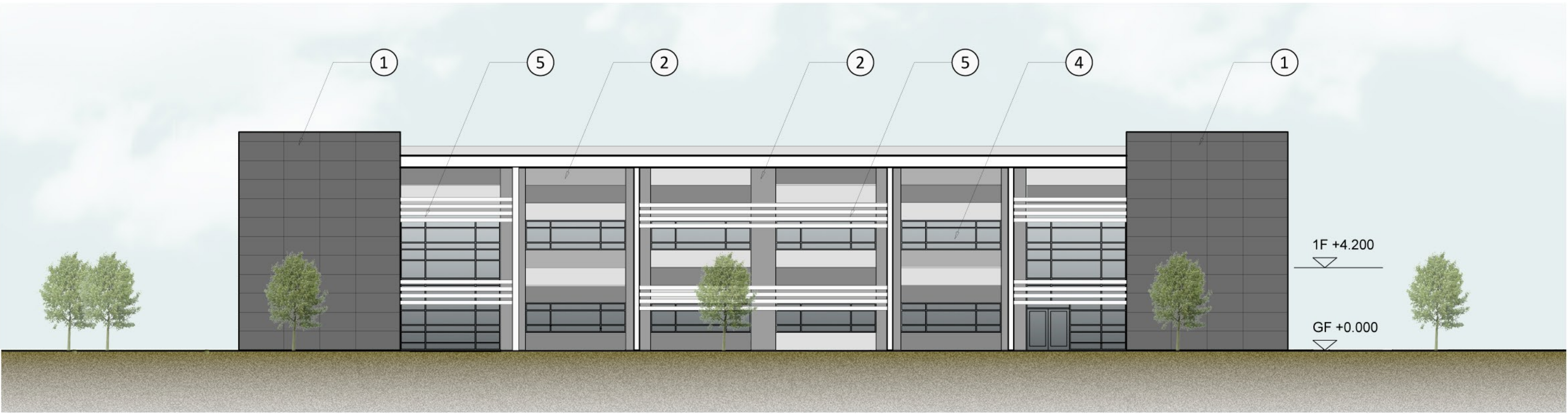
North Elevation 1:200 @ A1



East Elevation 1:200 @ A1



South Elevation 1:200 @ A1



West Elevation 1:200 @ A1

Materials Key:

- ① Glass fibre reinforced concrete (or similar) cladding, colour to be dark grey.
- ② Kingspan (or similar) insulated Flat Panel cladding system with preformed corners, colours to be agreed.
- ③ Kingspan Box Profile (or similar) insulated wall panel, colour to be agreed.
- ④ Fully thermally broken, polyester powder coated aluminium window system complete with factory sealed double glazed units, spandrel panels are to be Pilkington Spandrel Glass (or similar) opaque glass panels.
- ⑤ Aluminium fixed blade solar shading system to be suited to curtain wall system and incorporate brackets, flanges, supporting arms and connections to the curtain wall facade, colours to be agreed.
- ⑥ Colour coated insulated vertical shutter doors, colour to be agreed.

P1	Annotation added.	AS	GH	27.11.14
rev	amendments	by	ckd	date

Oxford Technology Park
Unit 3 - Elevations



Newark Beacon Innovation Centre, Cafferata Way, Newark, Nottinghamshire NG24 2TN
+44 (0)1636 653027 +44 (0)1636 653010 info@umcarchitects.com

Drawing Status:	PLANNING
Drawn:	AS
Date:	19/11/2014
Scale:	1:200 A1
Drawing no:	Revision:
13045 1025	P1

1m SCALE 1:200