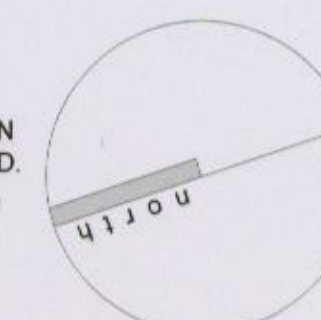


- KEY:**
- = bottom of bank
 - BLK. W = conc. block wall
 - BRK. W = brick wall
 - BT = telecom cover
 - B/W F = barbed wire
 - C/B F = close boarded fence
 - CHLK F = chain link fence
 - (CP) = catchpit manhole
 - CATV = cable television
 - DK = dropped kerb
 - DSW = dry stone wall
 - EP = electricity pole
 - FH = fire hydrant
 - MH(FW) = foul water manhole
 - IC(FW) = foul water insp. chamber
 - G = gully
 - HT = height
 - IC = inspection chamber
 - KO = kerb outlet
 - LC = lamp column
 - LEV.HT = level height
 - MH = manhole
 - ST.W = natural stone wall
 - OCG = open channel gully
 - OHC = overhead cable
 - P/W F = post and wire fence
 - P/R F = post and rail fence
 - RET. W = retaining wall
 - RS = road sign
 - SP = services pole
 - SV = stop valve
 - MH(SW) = storm water manhole
 - IC(SW) = storm water insp. chamber
 - ST/R = steel railing fence
 - TOB = top of bank
 - TP = telegraph pole
 - UTL = unable to lift
 - WM = water meter
 - WTH = width

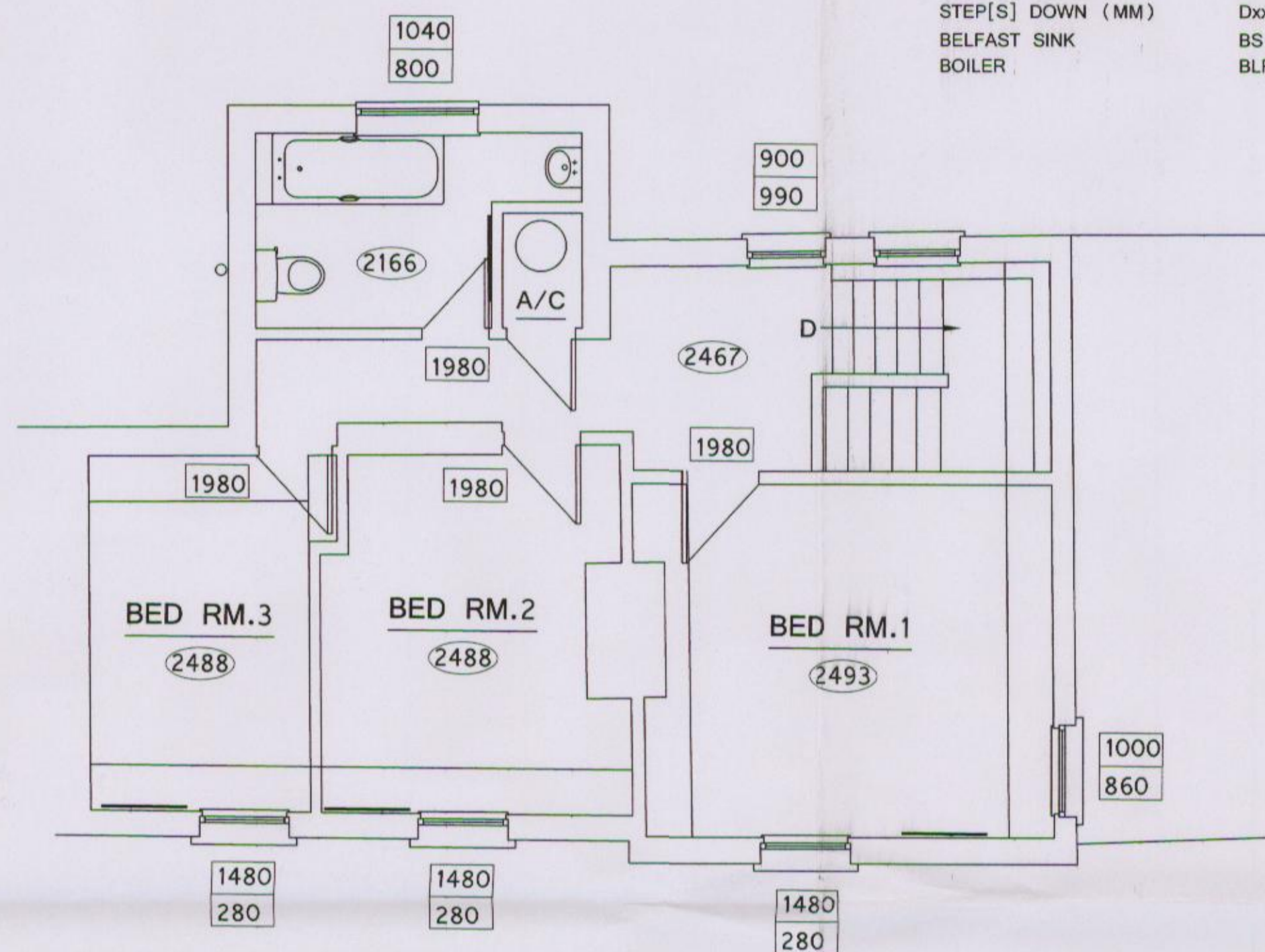
NOTES:
 LEVELS DO NOT RELATE TO ORDNANCE DATUM.
 ONLY VISIBLE SERVICES LOCATED.

© Panton Design
 DO NOT SCALE MEASUREMENTS FROM THE DRAWING

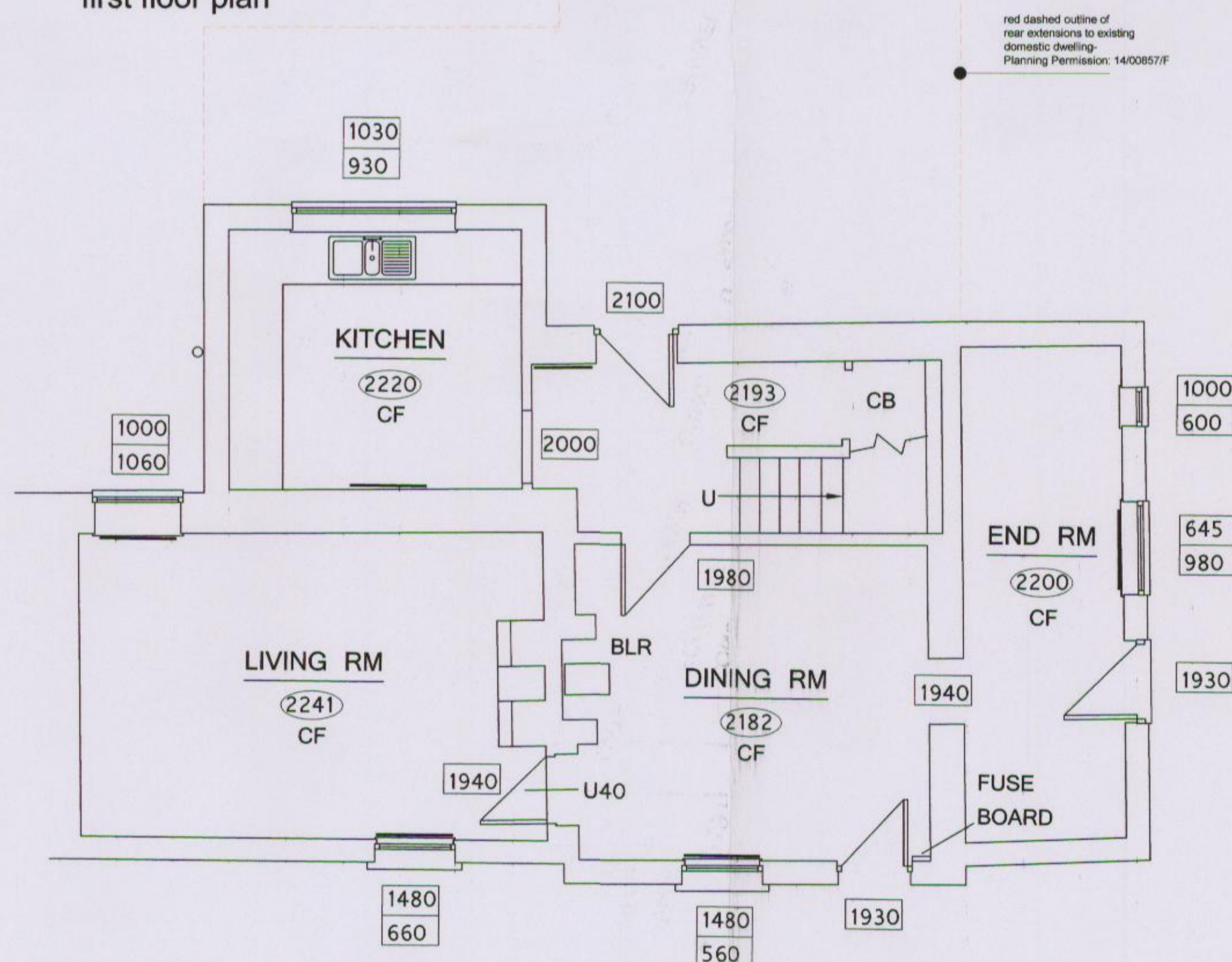
IMPORTANT: THE MEASURED LAND / BUILDING SURVEY AND DRAWN INFORMATION WAS PREPARED BY DEREK SKEATS ASSOCIATES LTD.



- KEY**
- HT. TO WINDOW XXXX
 - HT. OF WINDOW XXXX
 - CEILING HEIGHT XXXX
 - HT. OF DOOR OPENING XXXX
 - CONCRETE FLOOR CF
 - WOODEN FLOOR TBF
 - FLOORBOARD DIRECTION
 - TILED FLOOR TF
 - PARQUET FLOOR PF
 - CUPBOARD CB
 - STEP[S] UP (MM) Uxx
 - STEP[S] DOWN (MM) Dxx
 - BELFAST SINK BS
 - BOILER BLR



first floor plan



ground floor plan

A: 03.11.14: outline of permitted rear extensions added.
 revisions:

14/01/12/F