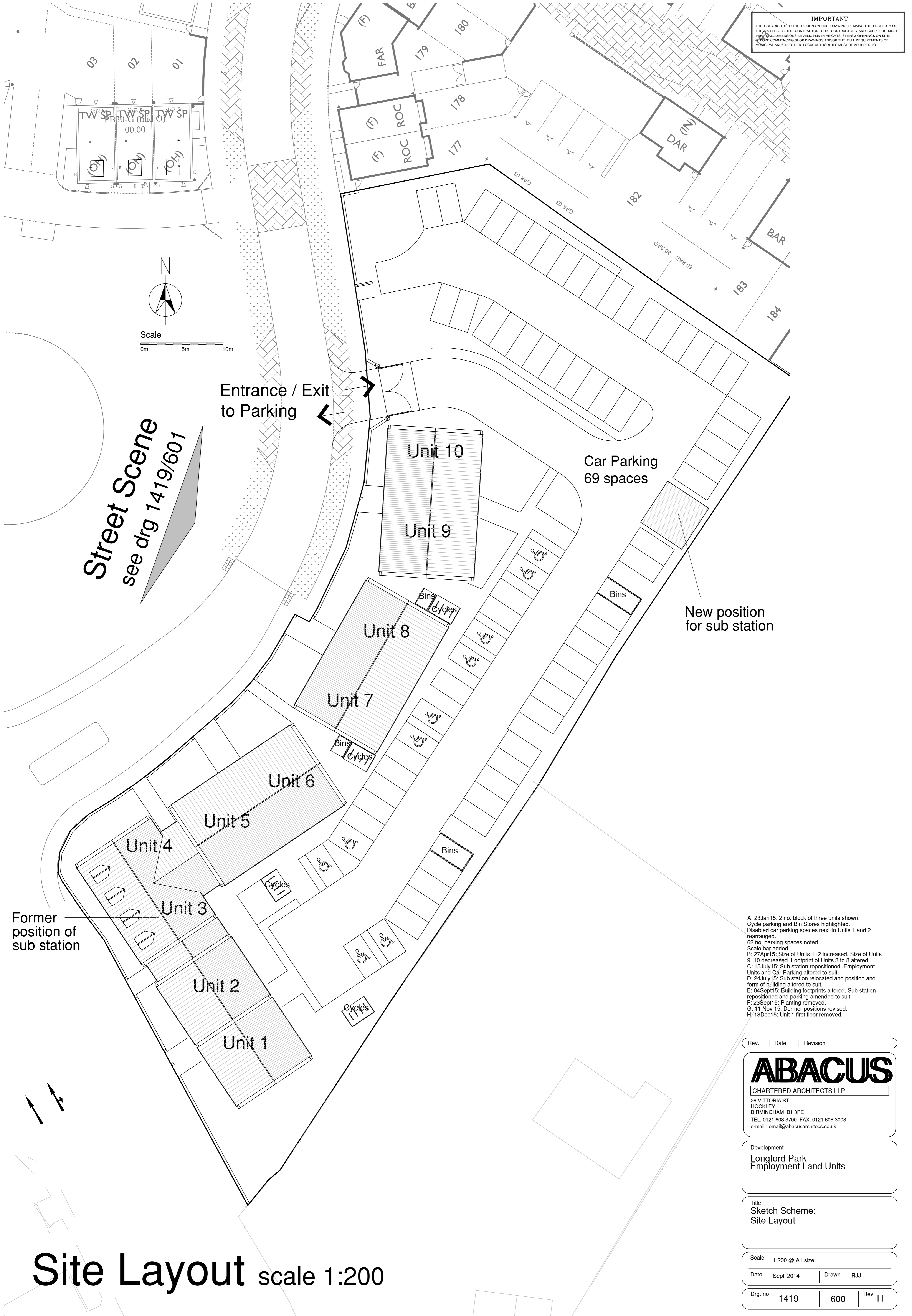


IMPORTANT
 THE COPYRIGHTS TO THE DESIGN ON THIS DRAWING REMAINS THE PROPERTY OF THE ARCHITECTS. THE CONTRACTOR, SUB-CONTRACTORS AND SUPPLIERS MUST VERIFY ALL DIMENSIONS, LEVELS, PLUMB HEIGHTS, STEPS & OPENINGS ON SITE, BEFORE COMMENCING SHOP DRAWINGS AND/OR THE FULL REQUIREMENTS OF MUNICIPAL AND/OR OTHER LOCAL AUTHORITIES MUST BE ADHERED TO.



Street Scene
 see drg 1419/601

Entrance / Exit
 to Parking

Car Parking
 69 spaces

New position
 for sub station

Former
 position of
 sub station

- A: 23Jan15: 2 no. block of three units shown. Cycle parking and Bin Stores highlighted. Disabled car parking spaces next to Units 1 and 2 rearranged.
- B: 27Apr15: 62 no. parking spaces noted. Scale bar added.
- C: 15July15: Size of Units 1+2 increased. Size of Units 9+10 decreased. Footprint of Units 3 to 8 altered.
- D: 24July15: Sub station repositioned. Employment Units and Car Parking altered to suit.
- E: 04Sept15: Sub station relocated and position and form of building altered to suit.
- F: 23Sept15: Building footprints altered. Sub station repositioned and parking amended to suit.
- G: 11 Nov 15: Planting removed.
- H: 18Dec15: Dormer positions revised.
- I: 18Dec15: Unit 1 first floor removed.

Rev.	Date	Revision

ABACUS
 CHARTERED ARCHITECTS LLP
 26 VICTORIA ST
 HOCKLEY
 BIRMINGHAM B1 3PE
 TEL. 0121 608 3700 FAX. 0121 608 3003
 e-mail : email@abacusarchitects.co.uk

Development
Longford Park
 Employment Land Units

Title
Sketch Scheme:
 Site Layout

Scale 1:200 @ A1 size
 Date Sept' 2014 Drawn RJJ

Drg. no 1419 600 Rev H

Site Layout scale 1:200