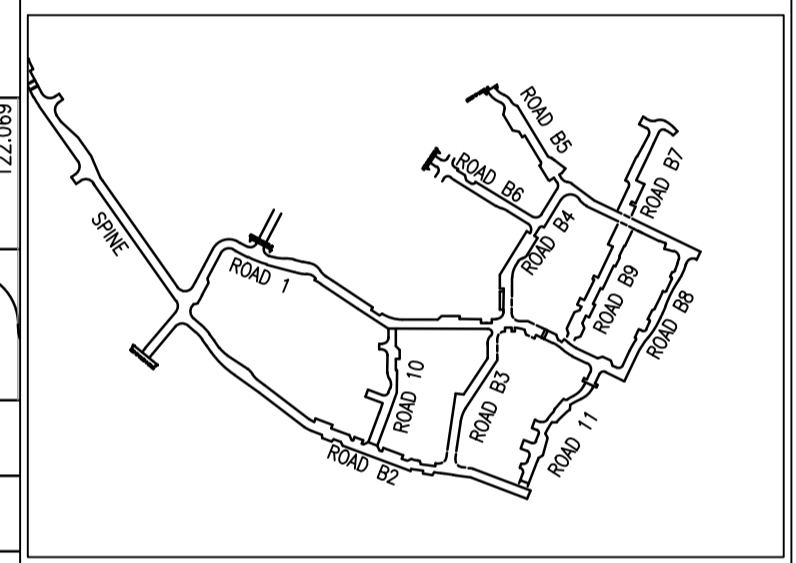


- GENERAL NOTES.**
- DO NOT SCALE THIS DRAWING.
 - THIS DRAWING IS TO BE READ IN CONJUNCTION WITH ALL OTHER RELEVANT ENGINEERS, ARCHITECTS AND SPECIALIST DESIGN DRAWINGS AND DETAILS.
 - ALL DIMENSIONS ARE IN METRES UNLESS NOTED OTHERWISE.
 - ANY DISCREPANCIES NOTED ON SITE ARE TO BE REPORTED TO THE ENGINEER IMMEDIATELY.
 - THE CONTRACTOR SHALL ESTABLISH EXACT LEVELS OF THE EXISTING FOUL AND SURFACE WATER SEWERS, AND/OR PROPOSED LEVEL AT DISCHARGE POINT, PRIOR TO THE COMMENCEMENT OF ANY DRAINAGE WORKS.
 - THE CONTRACTOR MUST ENSURE THAT THE GRADIENTS INDICATED ON THE LONGITUDINAL SECTIONS ARE CHECKED BETWEEN THE LEVELS SHOWN, PRIOR TO LAYING PIPES. AT NO TIMES MUST THE CONTRACTOR PROCEED WITH PIPE LAYING BY DIALLING THE GRADIENT SHOWN INTO A LASER WITHOUT CHECKING. ANY DISCREPANCY IN THIS RESPECT MUST BE REPORTED TO THE ENGINEER PRIOR TO PIPE LAYING.
 - THE CONTRACTOR SHALL CHECK HIS PIPE GRADIENTS BY MEANS OF PROFILES AND TRAVELLER TO VERIFY THE LASER GRADIENTS.
 - IN THE EVENT OF THE ABOVE PROCEDURES NOT BEING FOLLOWED, THE CLIENT WILL ACCEPT NO RESPONSIBILITY WHATSOEVER FOR ANY CONSEQUENTIAL LOSS OR DAMAGE.
 - THE CONTRACTOR IS RESPONSIBLE FOR ENSURING THAT ALL WORKS ARE TO THE SATISFACTION OF THE ENGINEER AND SHALL BE DEEMED TO HAVE INCLUDED WITHIN HIS RATES FOR ANY NECESSARY TESTING.

CHAINAGE	EXISTING GROUND LEVEL	ALIGNMENT LEVEL	VERTICAL ALIGNMENT	HORIZONTAL ALIGNMENT	LEFT HAND CHANNEL	RIGHT HAND CHANNEL	STORMWATER COVER LEVEL	STORMWATER INVERT	STORMWATER DETAILS	STORMWATER LENGTHS	FOULWATER COVER LEVEL	FOULWATER INVERT	FOULWATER DETAILS	FOULWATER LENGTHS
0.000	124.462	125.180			125.046	125.046								
2.660					124.921	124.921								
8.967					124.796	124.796								
10.000					124.671	124.671								
20.000					124.546	124.546								
30.000					124.421	124.421								
40.000					124.296	124.296								
40.920					124.171	124.171								
46.164					124.046	124.046								
50.000					123.921	123.921								
60.000					123.796	123.796								
66.502					123.671	123.671								
70.000					123.546	123.546								
75.000					123.421	123.421								
78.473					123.307	123.307								
80.000					123.204	123.204								
85.000					123.114	123.114								
90.000					123.037	123.037								
95.000					122.972	122.972								
98.826					122.919	122.919								
100.000					122.870	122.870								
108.616					122.821	122.821								
110.000					122.771	122.771								
111.145					122.722	122.722								
113.899					122.673	122.673								
120.000					122.624	122.624								
120.291					122.575	122.575								
130.000					122.525	122.525								
130.996					122.476	122.476								
132.315					122.434	122.434								
133.896					122.345	122.345								
140.000					122.336	122.336								
145.584					122.276	122.276								
150.000					122.154	122.154								
155.000					122.140	122.140								
160.000 LP					122.081	122.081								
160.497					122.030	122.030								
165.000					121.988	121.988								
165.765					121.962	121.962								
170.000					122.015	122.015								
171.503					122.017	122.017								
174.652					122.047	122.047								
175.523					122.088	122.088								
180.000					122.130	122.130								
180.504					122.156	122.156								
185.000					122.167	122.167								
188.964					122.134	122.134								
190.000					122.093	122.093								
195.000					122.035	122.035								
200.000					122.070	122.070								
204.225					120.420	120.420								
206.990					120.420	120.420								
210.000					120.495	120.495								
211.515					120.420	120.420								
220.000					120.447	120.447								
230.000					120.495	120.495								
239.990					120.420	120.420								
245.000					120.495	120.495								
250.000					120.420	120.420								
255.000 LP					120.495	120.495								
257.495					120.420	120.420								
260.000					120.495	120.495								
262.434					120.420	120.420								
265.000					120.495	120.495								
270.000					120.420	120.420								
270.248					120.495	120.495								
275.000					120.420	120.420								
280.000					120.495	120.495								
280.923					120.420	120.420								
285.000					120.495	120.495								
288.449					120.420	120.420								
290.000					120.495	120.495								
295.000					120.420	120.420								
300.000					120.495	120.495								
305.000					120.420	120.420								
307.896					120.495	120.495								



ROAD LAYOUT PLAN

A	SPINE ROAD LAYOUT CHANGED. DRAINAGE AND ALIGNMENT AMENDED TO SUIT.	KM	KA	10.10.14
REV:	AMENDMENTS:	DRN	CHK:	DATE:

LONGFORD PARK BODICOTE BANBURY

DRAWING TITLE: **SPINE ROAD PROFILE CHAINAGE 0.000 TO 300.000 SHEET 1 OF 3**

CLIENT: **BARRATT HOMES, BOVIS HOMES TAYLOR WIMPEY**

DRAWING NUMBER: **20488_02_110_19.1**

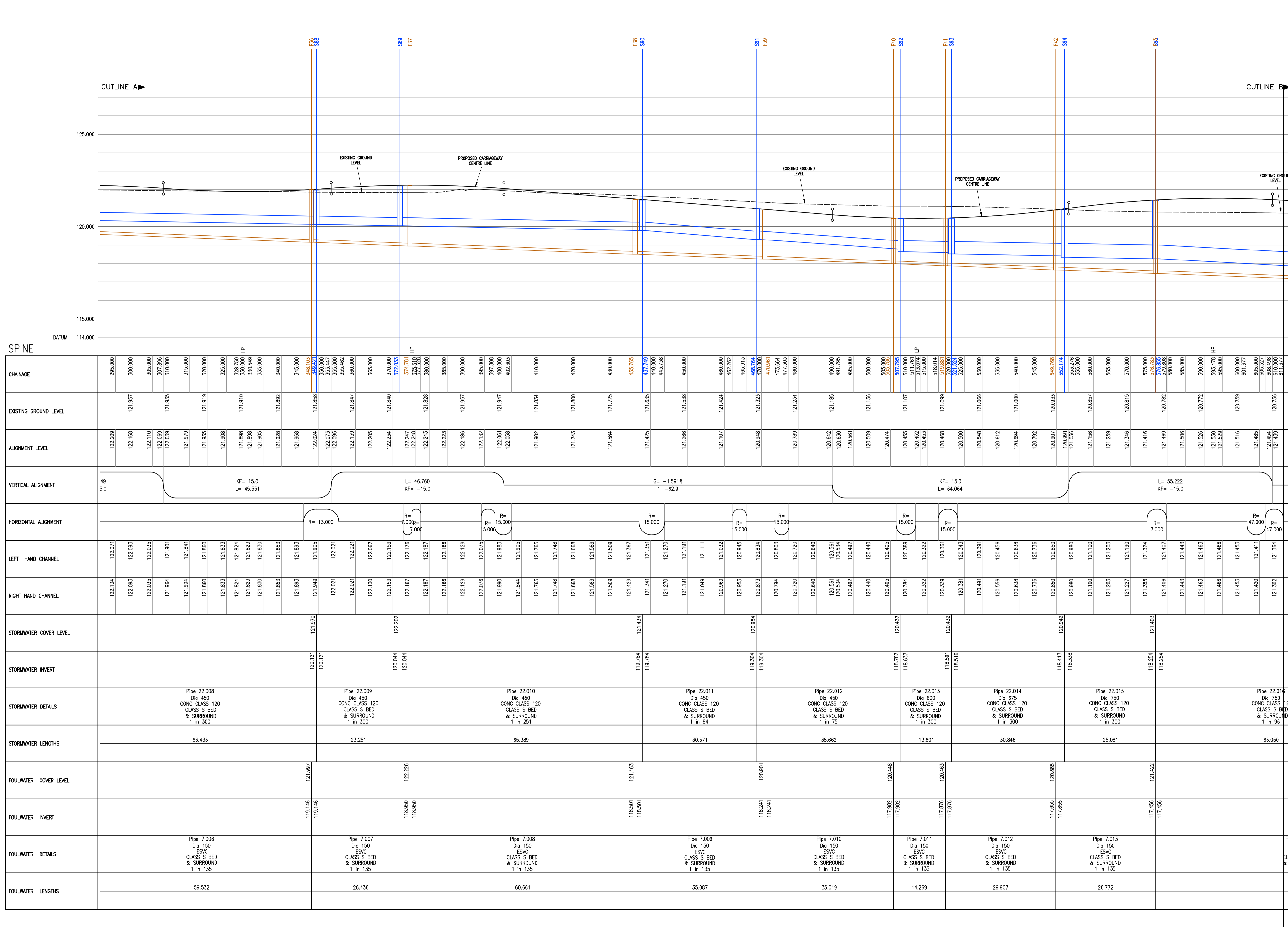
REVISION: A	SHEET SIZE: A1	SCALE: 1:500H, 1:100V
DRAWN BY: KA	CHECKED BY: JF	DATE: 12.09.14

STATUS: **TENDER**

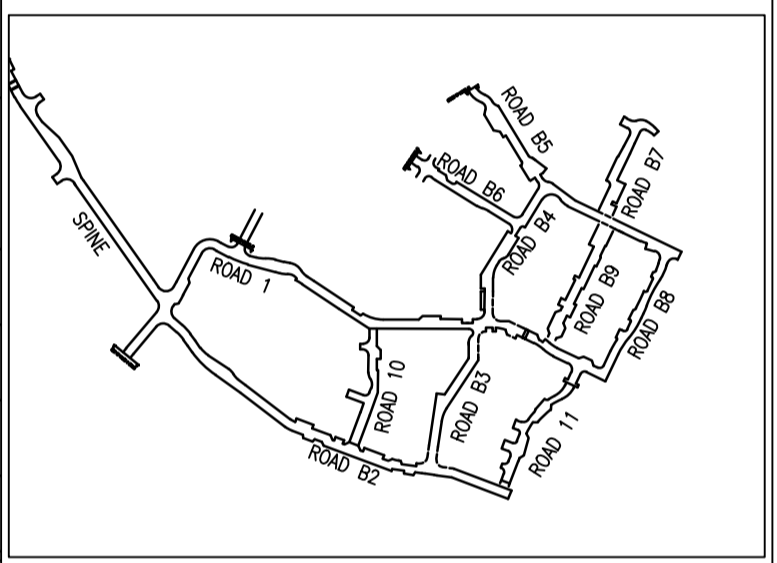


GENERAL NOTES.

- 1. DO NOT SCALE THIS DRAWING.
- 2. THIS DRAWING IS TO BE READ IN CONJUNCTION WITH ALL OTHER RELEVANT ENGINEERS, ARCHITECTS AND SPECIALIST DESIGN DRAWINGS AND DETAILS.
- 3. ALL DIMENSIONS ARE IN METRES UNLESS NOTED OTHERWISE.
- 4. ANY DISCREPANCIES NOTED ON SITE ARE TO BE REPORTED TO THE ENGINEER IMMEDIATELY.
- 5. THE CONTRACTOR SHALL ESTABLISH EXACT LEVELS OF THE EXISTING FOUL AND SURFACE WATER SEWERS, AND/OR PROPOSED LEVEL AT DISCHARGE POINT, PRIOR TO THE COMMENCEMENT OF ANY DRAINAGE WORKS.
- 6. THE CONTRACTOR MUST ENSURE THAT THE GRADIENTS INDICATED ON THE LONGITUDINAL SECTIONS ARE CHECKED BETWEEN THE LEVELS SHOWN, PRIOR TO LAYING PIPES. AT NO TIMES MUST THE CONTRACTOR PROCEED WITH PIPE LAYING BY DIALLING THE GRADIENT SHOWN INTO A LASER WITHOUT CHECKING. ANY DISCREPANCY IN THIS RESPECT MUST BE REPORTED TO THE ENGINEER PRIOR TO PIPE LAYING.
- 7. THE CONTRACTOR SHALL CHECK HIS PIPE GRADIENTS BY MEANS OF PROFILES AND TRAVELLER TO VERIFY THE LASER GRADIENTS.
- 8. IN THE EVENT OF THE ABOVE PROCEDURES NOT BEING FOLLOWED, THE CLIENT WILL ACCEPT NO RESPONSIBILITY WHATSOEVER FOR ANY CONSEQUENTIAL LOSS OR DAMAGE.
- 9. THE CONTRACTOR IS RESPONSIBLE FOR ENSURING THAT ALL WORKS ARE TO THE SATISFACTION OF THE ENGINEER AND SHALL BE DEEMED TO HAVE INCLUDED WITHIN HIS RATES FOR ANY NECESSARY TESTING.



CHAINAGE	EXISTING GROUND LEVEL	ALIGNMENT LEVEL	VERTICAL ALIGNMENT	HORIZONTAL ALIGNMENT	LEFT HAND CHANNEL	RIGHT HAND CHANNEL	STORMWATER COVER LEVEL	STORMWATER INVERT	STORMWATER DETAILS	STORMWATER LENGTHS	FOULWATER COVER LEVEL	FOULWATER INVERT	FOULWATER DETAILS	FOULWATER LENGTHS
295.000		122.209	49		122.071	122.134								
300.000	121.957	122.189	5.0		122.093	122.093			Pipe 22.008 Dia 450 CONC CLASS 120 CLASS 5 BED & SURROUND 1 in 300	63.433			Pipe 7.006 Dia 150 FSVC CLASS 5 BED & SURROUND 1 in 135	59.532
305.000	121.919	122.110		$R=13,000$	122.035	122.035							Pipe 7.007 Dia 150 FSVC CLASS 5 BED & SURROUND 1 in 135	26.436
310.000	121.935	122.039			121.901	121.964			Pipe 22.009 Dia 450 CONC CLASS 120 CLASS 5 BED & SURROUND 1 in 300	23.251				
315.000	121.979	121.979			121.841	121.904								
320.000	121.919	121.935			121.860	121.880								
325.000	121.908	121.908			121.833	121.833								
330.000	121.898	121.898			121.824	121.824								
335.000	121.898	121.898			121.823	121.823								
340.000	121.905	121.905			121.830	121.830								
345.000	121.892	121.928			121.853	121.853								
350.000	121.889	121.988			121.893	121.893								
355.000	121.889	122.024			121.905	121.905								
360.000	121.847	122.039			122.021	122.021								
365.000	121.847	122.039			122.021	122.021								
370.000	121.847	122.039			122.021	122.021								
375.000	121.847	122.039			122.021	122.021								
380.000	121.847	122.039			122.021	122.021								
385.000	121.847	122.039			122.021	122.021								
390.000	121.847	122.039			122.021	122.021								
395.000	121.847	122.039			122.021	122.021								
400.000	121.847	122.039			122.021	122.021								
405.000	121.847	122.039			122.021	122.021								
410.000	121.847	122.039			122.021	122.021								
415.000	121.847	122.039			122.021	122.021								
420.000	121.847	122.039			122.021	122.021								
425.000	121.847	122.039			122.021	122.021								
430.000	121.847	122.039			122.021	122.021								
435.000	121.847	122.039			122.021	122.021								
440.000	121.847	122.039			122.021	122.021								
445.000	121.847	122.039			122.021	122.021								
450.000	121.847	122.039			122.021	122.021								
455.000	121.847	122.039			122.021	122.021								
460.000	121.847	122.039			122.021	122.021								
465.000	121.847	122.039			122.021	122.021								
470.000	121.847	122.039			122.021	122.021								
475.000	121.847	122.039			122.021	122.021								
480.000	121.847	122.039			122.021	122.021								
485.000	121.847	122.039			122.021	122.021								
490.000	121.847	122.039			122.021	122.021								
495.000	121.847	122.039			122.021	122.021								
500.000	121.847	122.039			122.021	122.021								
505.000	121.847	122.039			122.021	122.021								
510.000	121.847	122.039			122.021	122.021								
515.000	121.847	122.039			122.021	122.021								
520.000	121.847	122.039			122.021	122.021								
525.000	121.847	122.039			122.021	122.021								
530.000	121.847	122.039			122.021	122.021								
535.000	121.847	122.039			122.021	122.021								
540.000	121.847	122.039			122.021	122.021								
545.000	121.847	122.039			122.021	122.021								
550.000	121.847	122.039			122.021	122.021								
555.000	121.847	122.039			122.021	122.021								
560.000	121.847	122.039			122.021	122.021								
565.000	121.847	122.039			122.021	122.021								
570.000	121.847	122.039			122.021	122.021								
575.000	121.847	122.039			122.021	122.021								
580.000	121.847	122.039			122.021	122.021								
585.000	121.847	122.039			122.021	122.021								
590.000	121.847	122.039			122.021	122.021								
595.000	121.847	122.039			122.021	122.021								
600.000	121.847	122.039			122.021	122.021								
605.000	121.847	122.039			122.021	122.021								
610.000	121.847	122.039			122.021	122.021								



REV:	AMENDMENTS:	DRN:	CHK:	DATE:
------	-------------	------	------	-------

PROJECT: LONGFORD PARK BODICOTE BANBURY

DRAWING TITLE: SPINE ROAD PROFILE CHAINAGE 300.000 TO 610.000 SHEET 2 OF 3

CLIENT: BARRATT HOMES, BOVIS HOMES TAYLOR WIMPEY

DRAWING NUMBER: 20488_02_110_19.2

REVISION:	SHEET SIZE:	SCALE:
A	A1	1:500H, 1:100V

DRAWN BY:	CHECKED BY:	DATE:
KA	JF	12.09.14

STATUS: TENDER

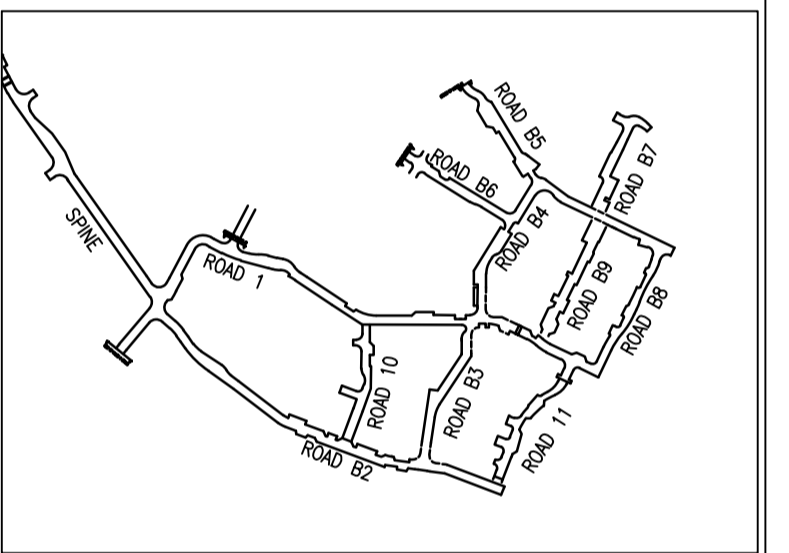


ORDNANCE SURVEY © CROWN COPYRIGHT 2014. ALL RIGHTS RESERVED. LICENCE NUMBER 100022432.

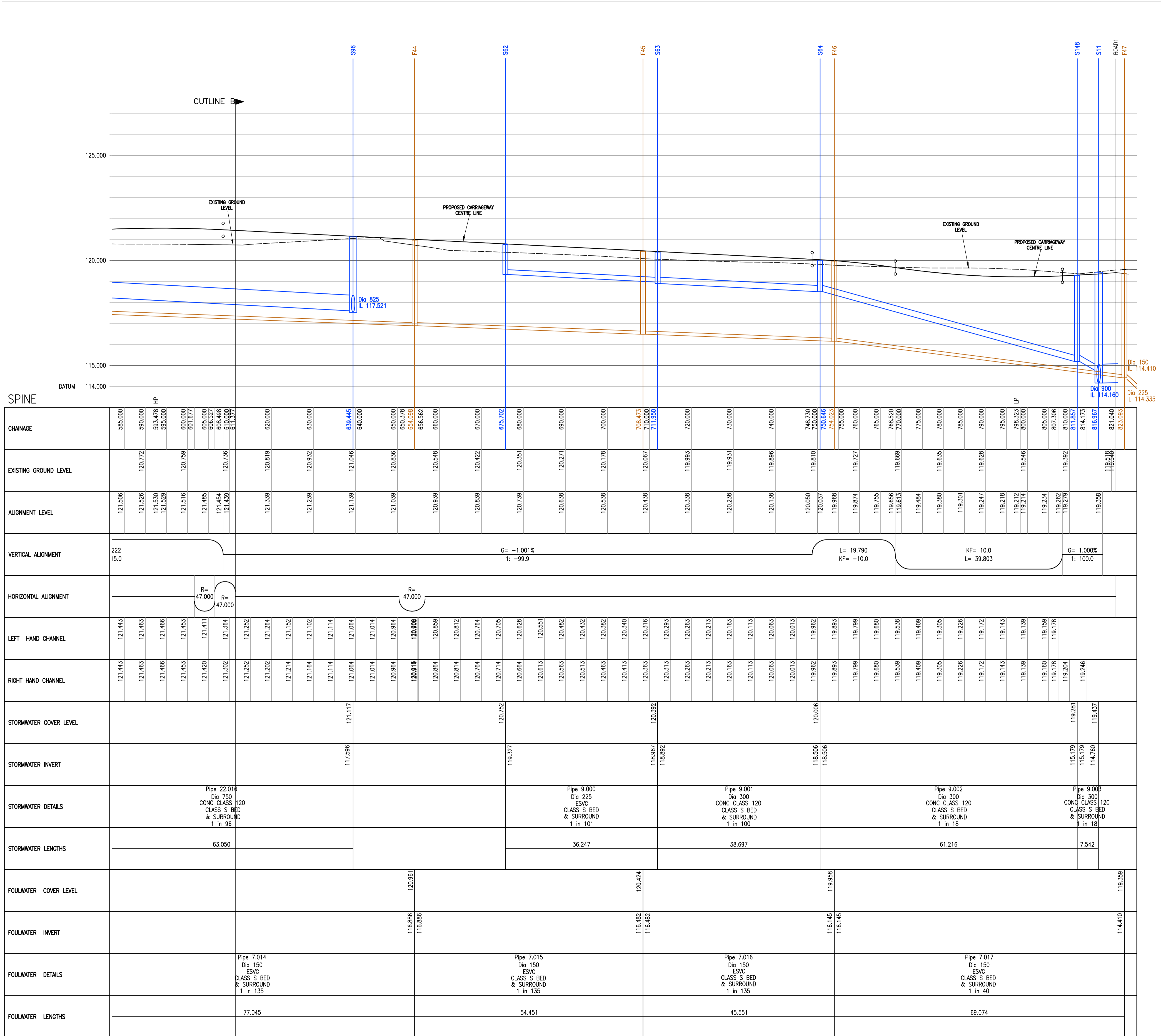
File Location: \\M-EC-Job-Box\20488\20488\Drawings\m-ec\panel b & c02 spine-infrastructure\110 series\20488_02_110_19 spine road profiles rev a.dwg

GENERAL NOTES.

- DO NOT SCALE THIS DRAWING.
- THIS DRAWING IS TO BE READ IN CONJUNCTION WITH ALL OTHER RELEVANT ENGINEERS, ARCHITECTS AND SPECIALIST DESIGN DRAWINGS AND DETAILS.
- ALL DIMENSIONS ARE IN METRES UNLESS NOTED OTHERWISE.
- ANY DISCREPANCIES NOTED ON SITE ARE TO BE REPORTED TO THE ENGINEER IMMEDIATELY.
- THE CONTRACTOR SHALL ESTABLISH EXACT LEVELS OF THE EXISTING FOUL AND SURFACE WATER SEWERS, AND/OR PROPOSED LEVEL AT DISCHARGE POINT, PRIOR TO THE COMMENCEMENT OF ANY DRAINAGE WORKS.
- THE CONTRACTOR MUST ENSURE THAT THE GRADIENTS INDICATED ON THE LONGITUDINAL SECTIONS ARE CHECKED BETWEEN THE LEVELS SHOWN, PRIOR TO LAYING PIPES. AT NO TIMES MUST THE CONTRACTOR PROCEED WITH PIPE LAYING BY DIALLING THE GRADIENT SHOWN INTO A LASER WITHOUT CHECKING. ANY DISCREPANCY IN THIS RESPECT MUST BE REPORTED TO THE ENGINEER PRIOR TO PIPE LAYING.
- THE CONTRACTOR SHALL CHECK HIS PIPE GRADIENTS BY MEANS OF PROFILES AND TRAVELLER TO VERIFY THE LASER GRADIENTS.
- IN THE EVENT OF THE ABOVE PROCEDURES NOT BEING FOLLOWED, THE CLIENT WILL ACCEPT NO RESPONSIBILITY WHATSOEVER FOR ANY CONSEQUENTIAL LOSS OR DAMAGE.
- THE CONTRACTOR IS RESPONSIBLE FOR ENSURING THAT ALL WORKS ARE TO THE SATISFACTION OF THE ENGINEER AND SHALL BE DEEMED TO HAVE INCLUDED WITHIN HIS RATES FOR ANY NECESSARY TESTING.



ROAD LAYOUT PLAN



A	SPINE ROAD LAYOUT CHANGED.	KM	KA	10.10.14
REV:	AMENDMENTS:	DRN	CHK:	DATE:

PROJECT: **LONGFORD PARK BODICOTE BANBURY**

DRAWING TITLE: **SPINE ROAD PROFILE CHAINAGE 610.000 TO END SHEET 3 OF 3**

CLIENT: **BARRATT HOMES, BOVIS HOMES TAYLOR WIMPEY**

DRAWING NUMBER: **20488_02_110_19.3**

REVISION:	SHEET SIZE:	SCALE:
A	A1	1:500H, 1:100V
DRAWN BY:	CHECKED BY:	DATE:
KA	JF	12.09.14

STATUS: **TENDER**

M-EC Wellington House Leicester Road
 Boston Lincolnshire LE67 6HP
 T: 01530 264 753
 F: 01530 588 116
 bstock@m-ec.co.uk
 www.m-ec.co.uk

ORDNANCE SURVEY © CROWN COPYRIGHT 2014. ALL RIGHTS RESERVED. LICENCE NUMBER 100022432.

File Location: T:\M-EC Job Books\20488\Drawings\m-ec\panel b & c\02 spine infrastructure\10 series\20488_02_110_19 spine road profile rev a.dwg
 Printed: 10.10.2014