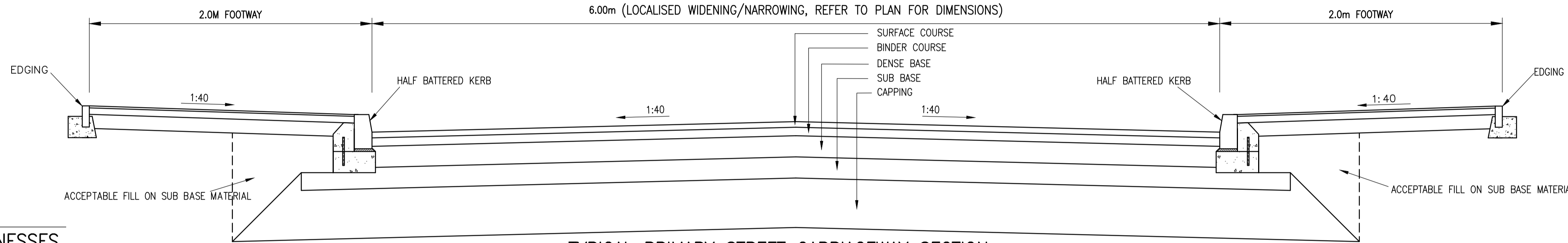
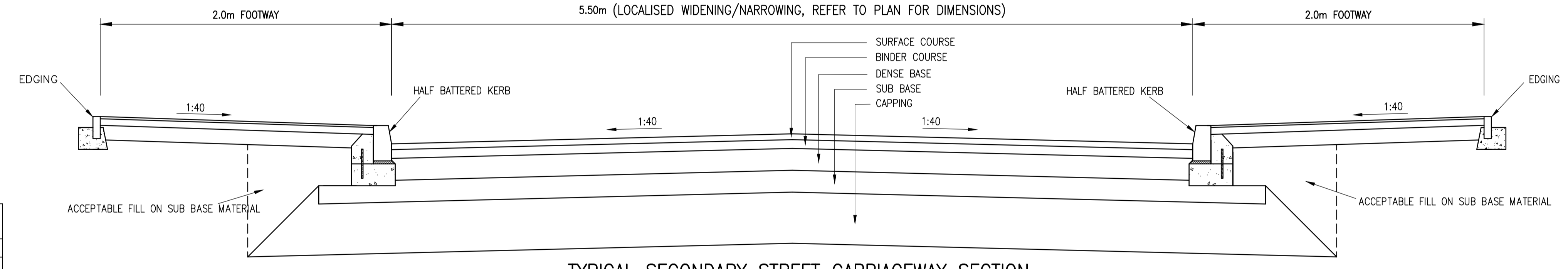


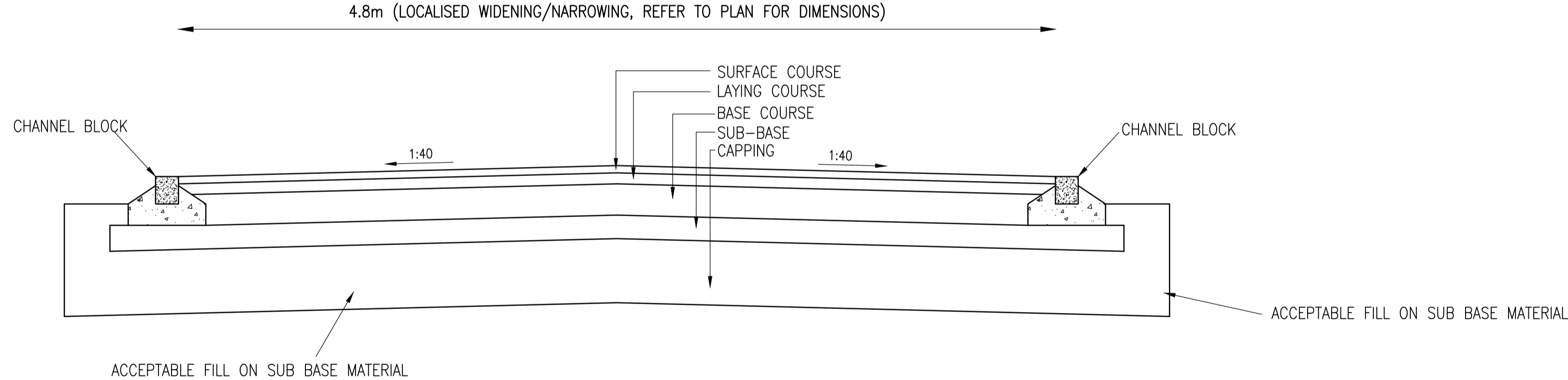
TYPICAL SPINE ROAD CARRIAGEWAY SECTION
SCALE 1:20



TYPICAL PRIMARY STREET CARRIAGEWAY SECTION
SCALE 1:20



TYPICAL SECONDARY STREET CARRIAGEWAY SECTION
SCALE 1:20



TYPICAL LANE / MINOR STREET CARRIAGEWAY SECTION
SCALE 1:25

FIGURE 1 - SUB-BASE & CAPPING THICKNESSES

C.B.R VALUE	OPTION A		OPTION B	
	CAPPING TO CI 613.	TYPE 1 TO CI 803.	CAPPING TO CI 613.	TYPE 1 TO CI 803.
<2%	600mm	150mm	600mm	150mm
2%	450mm	150mm	450mm	150mm
3%	350mm	150mm	-	300mm
4%	300mm	150mm	-	275mm*
5%-15%	250mm	150mm	-	225mm*
>15%	-	150mm*	-	150mm*

NOTE: * SUB-BASE TO BE DEEPENED TO PROVIDE A MINIMUM OF 450mm OVERALL CARRIAGEWAY CONSTRUCTION DEPTH. MATERIALS WITHIN 450mm OF THE FINISHED ROAD SURFACE MUST NOT BE FROST SUSCEPTIBLE.

OGCR to BS EN 13242:2013		OCC GRIT	
SIEVE SIZE	PERCENTAGE PASSING	SIEVE SIZE	PERCENTAGE PASSING
40	100	14	100
31.5	98-100	10	98-100
20	90-99	6.3	80-99
10	25-70	2	0-20
4	0-15	1	0-5
2.8	0-15	0.063	0-2
0.063	0-5		

CARRIAGEWAY SPECIFICATION

	IMPERMEABLE BLOCK PAVING CARRIAGEWAY	IMPERMEABLE BLOCK PAVING SERVICE STRIP
SURFACE COURSE	80mm THICK PAVER, JOINTING IN ACCORDANCE WITH BS 7533-3 F ₂	60mm THICK PAVER, JOINTING IN ACCORDANCE WITH BS 7533-3 F ₂ NOTE: 80mm PAVERS ACCEPTABLE
LAYING COURSE	30mm SAND TO BS EN 12620 G ₈₅ 0/4 F _{1.5}	50mm SAND TO BS EN 12620 G ₈₅ 0/4 F _{1.5}
ROAD BASE	130mm AC 32 DENSE 100PEN	NIL
SUB-BASE / CAPPING	SEE FIG 1	CBR >5% 150mm TYPE 1 CBR 3.5-5% 225mm TYPE 1 CBR 2-3.5% 300mm TYPE 1 CBR <2% REFER BACK TO ENGINEER

CARRIAGEWAY SPECIFICATION

	PRIMARY STREET	SECONDARY / SIDE STREET	LANE / MINOR STREET
SURFACE COURSE	40mm THICKNESS HRA 33/14 F SURF DES 40/60 WIR 1 + PCC 14/20 MIN PSV 55 EN 13108-4	35mm AC 10 CLOSE SURF 40/60 PEN WITH WARM RED TONE CHIPPINGS	SURFACE COURSE: 80mm THICK BOUND GRAVEL COLOUR BRINDLE. LAYING COURSE: 50mm GRIT TO OCC SPEC, SEE TABLE.
BINDER COURSE	65mm AC 20 DENSE 40/60 PEN TO CL. 906 OF THE SPECIFICATION FOR HIGHWAY WORKS	60mm AC 20 DENSE 40/60 PEN TO CL. 906 OF THE SPECIFICATION FOR HIGHWAY WORKS	RUNNING/BASE COURSE: 130mm MINIMUM COMPACTED THICKNESS OF 32mm DENSE ASPHALT CONCRETE BASE, DESIGNATION AC 32 DENSE BASE 100/150, WITH CORED 100mm DIAMETER HOLES ON A 750mm ORTHOGONAL GRID THROUGH BASE INTO SUB-BASE FILLED WITH COURSE GRADED AGGREGATE MATERIAL.
ROAD BASE	150mm AC 32 DENSE 40/60 PEN TO CL. 903	110mm AC 32 DENSE 40/60 PEN TO CL. 903	SUB-BASE: 350mm MINIMUM COMPACTED THICKNESS OPEN GRADED CRUSHED ROCK (OGCR) 20mm TO BS EN 13242:2013.
SUB-BASE / CAPPING	SUB-BASE - TYPE 1 MATERIAL TO CLAUSE 803 (THICKNESS SUBJECT TO INSITU CBR RESULTS - SEE FIGURE 1) CAPPING - 6F2 MATERIAL (THICKNESS SUBJECT TO INSITU CBR RESULTS - SEE FIGURE 1)		

FOOTWAY / VEHICLE CROSSING SPECIFICATION

	BITUMINOUS FOOTWAY	BITUMINOUS VEHICLE CROSSING	GRASS VERGE	BLOCK PAVED FOOTWAY / VEHICLE CROSSING
SURFACE COURSE	20mm AC 6 DENSE 40/60 PEN	3 NOM. SIZE FINE GRADED SURFACE COURSE OR: 6 NOM. SIZE MEDIUM GRADED SURFACE COURSE BOTH THE ABOVE LAID AND COMPACTED TO CL. 901 (20mm THICK)	150mm (MIN) CLASS 5A OR SB TOPSOIL TO SHW TABLE 6/1 AND LOW MAINTENANCE GRASS SEED	80mm THICK BLOCK PAVING. BLOCKS TO BE MARSHALLS "KEYBLOK" OR SIMILAR APPROVED, LAID IN 90° HERRINGBONE. COLOUR OF BLOCKS TO BE AGREED WITH HIGHWAY AUTHORITY AND ENGINEER.
BINDER COURSE	50mm AC 20 DENSE 40/60 PEN	20 NOM. SIZE OPEN TEXTURED BINDER COURSE MACADAM OR: 20 NOM. SIZE DENSE BITUMEN MACADAM BOTH LAID AND COMPACTED TO CL. 901 (50mm THICK)	N/A	SPINE/PRIMARY - 30mm GRIT TO OCC SPEC SECONDARY - 50mm GRIT TO OCC SPEC
DENSE BASE	N/A	N/A	N/A	SPINE/PRIMARY - 125mm AC 32 DENSE 40/60 PEN SECONDARY - NIL
SUB-BASE	225mm THICK TYPE 1 SUB-BASE TO DTP SPECIFICATION CL. 803 FOR ACCESS ROADS 3, 4 & 5. 160mm THICK TYPE 1 SUB-BASE TO DTP SPECIFICATION CL. 803 ELSEWHERE.	225mm THICK TYPE 1 SUB-BASE TO DTP SPECIFICATION CL. 803	N/A	CBR >5% 150mm TYPE 1 CBR 3.5-5% SPINE/PRIMARY 225mm TYPE 1 - SECONDARY 250mm TYPE 1 CBR 2-3.5% SPINE/PRIMARY 300mm TYPE 1 - SECONDARY 350mm TYPE 1 CBR <2% REFER BACK TO ENGINEER

GENERAL NOTES.

- DO NOT SCALE THIS DRAWING.
- THIS DRAWING IS TO BE READ IN CONJUNCTION WITH ALL RELEVANT ARCHITECT'S, ENGINEER'S AND SPECIALIST DRAWINGS AND SPECIFICATIONS.
- ALL DIMENSIONS ARE IN MILLIMETRES UNLESS NOTED OTHERWISE. ALL LEVELS ARE IN METRES UNLESS NOTED OTHERWISE.
- ANY DISCREPANCIES NOTED ON SITE ARE TO BE REPORTED TO THE ENGINEER IMMEDIATELY.
- THE CONTRACTOR IS RESPONSIBLE FOR ENSURING THAT ALL WORKS ARE TO THE SATISFACTION OF THE ENGINEER, AND SHALL BE DEEMED TO HAVE INCLUDED IN HIS RATES FOR ANY NECESSARY TESTING.
- BITUMINOUS SPRAY TO BE APPLIED TO ALL EXISTING SURFACES WHERE DIRECTLY OVERLAID BY BITUMINOUS MATERIAL. RATE OF SPREAD TO BE 0.4-0.6 LITRES PER SQUARE METRE.
- ALL WORKS SHALL BE CARRIED OUT IN ACCORDANCE WITH THE OXFORDSHIRE COUNTY COUNCIL DESIGN GUIDE.
- CLAUSES REFER TO THE SPECIFICATION FOR HIGHWAY WORKS, UNLESS OTHERWISE STATED.
- BLOCK PAVING TO BE LAID IN 90 DEGREE HERRINGBONE PATTERN.
- OXFORDSHIRE COUNTY COUNCIL HAVE OBSERVED PROBLEMS WITH THE PERFORMANCE OF TEMPORARY BITUMINOUS RUNNING COURSES THAT ARE SUBJECTED TO HEAVY CONSTRUCTION RELATED LOADING. THE CONDITION/PERFORMANCE OF THE BITUMINOUS RUNNING COURSE WILL BE MONITORED DURING THE CONSTRUCTION PERIOD. IF DAMAGE, SUBSIDENCE OR GENERAL DEGRADATION OCCURS, REPAIRS OR TOTAL REMOVAL MAY BE REQUESTED BY THE COUNCIL'S INSPECTOR.

A	RAMP DETAILS REMOVED FROM SHEET 2	KM	KA	10.10.14
REV:	AMENDMENTS:	DRN	CHK:	DATE:

PROJECT: LONGFORD PARK BODCOTE BANBURY

DRAWING TITLE: PHASE 2 HIGHWAY CONSTRUCTION DETAILS SHEET 1 OF 2

CLIENT: BARRATT HOMES, BOVIS HOMES, TAYLOR WIMPEY

DRAWING NUMBER: 20488_02_080_03.1

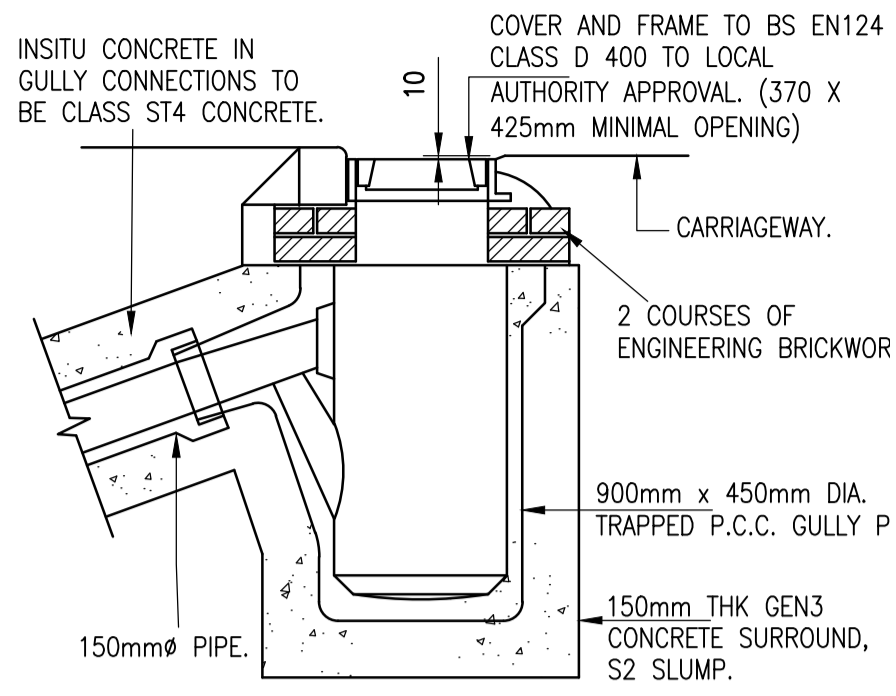
REVISION: A	SHEET SIZE: A1	SCALE: AS SHOWN
DRAWN BY: TW	CHECKED BY: JF	DATE: 29.08.14

STATUS: TENDER

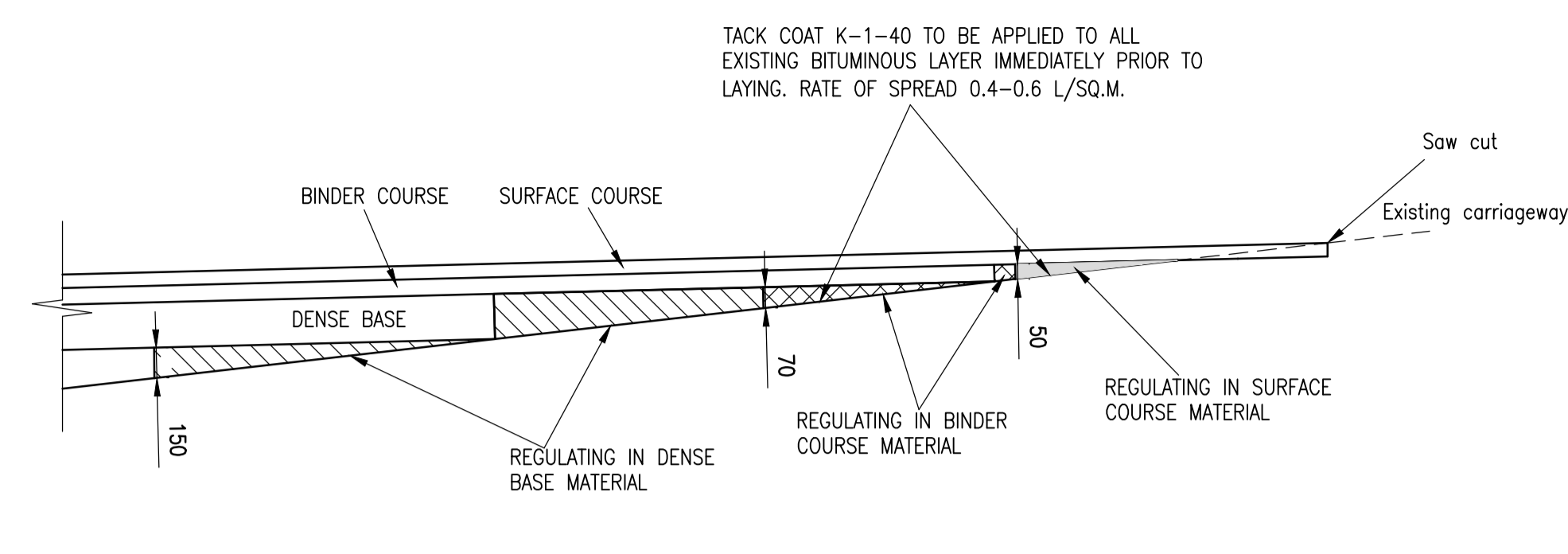


ORDNANCE SURVEY © CROWN COPYRIGHT 2014. ALL RIGHTS RESERVED. LICENCE NUMBER 10002432.

File Location: \\M-EC Job Books\20488\Drawings\m-ec\panel b & c\02 series infrastructure\030 series\20488_02_080_03.rvt a phase2 highway construction details.dwg



TYPICAL GULLY DETAIL
SCALE 1:20

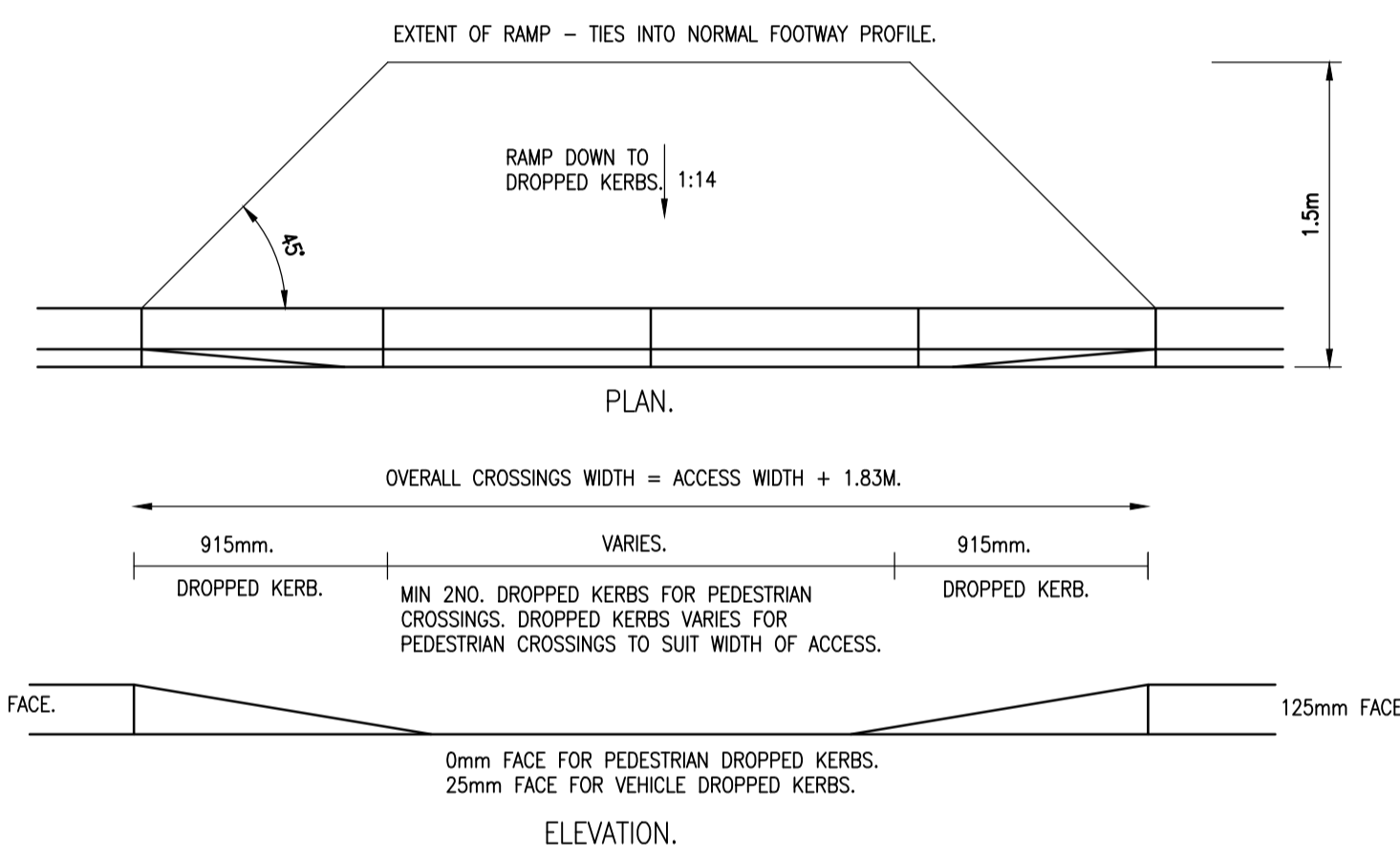


CARRIAGEWAY REGULATING DETAIL
SCALE 1:20

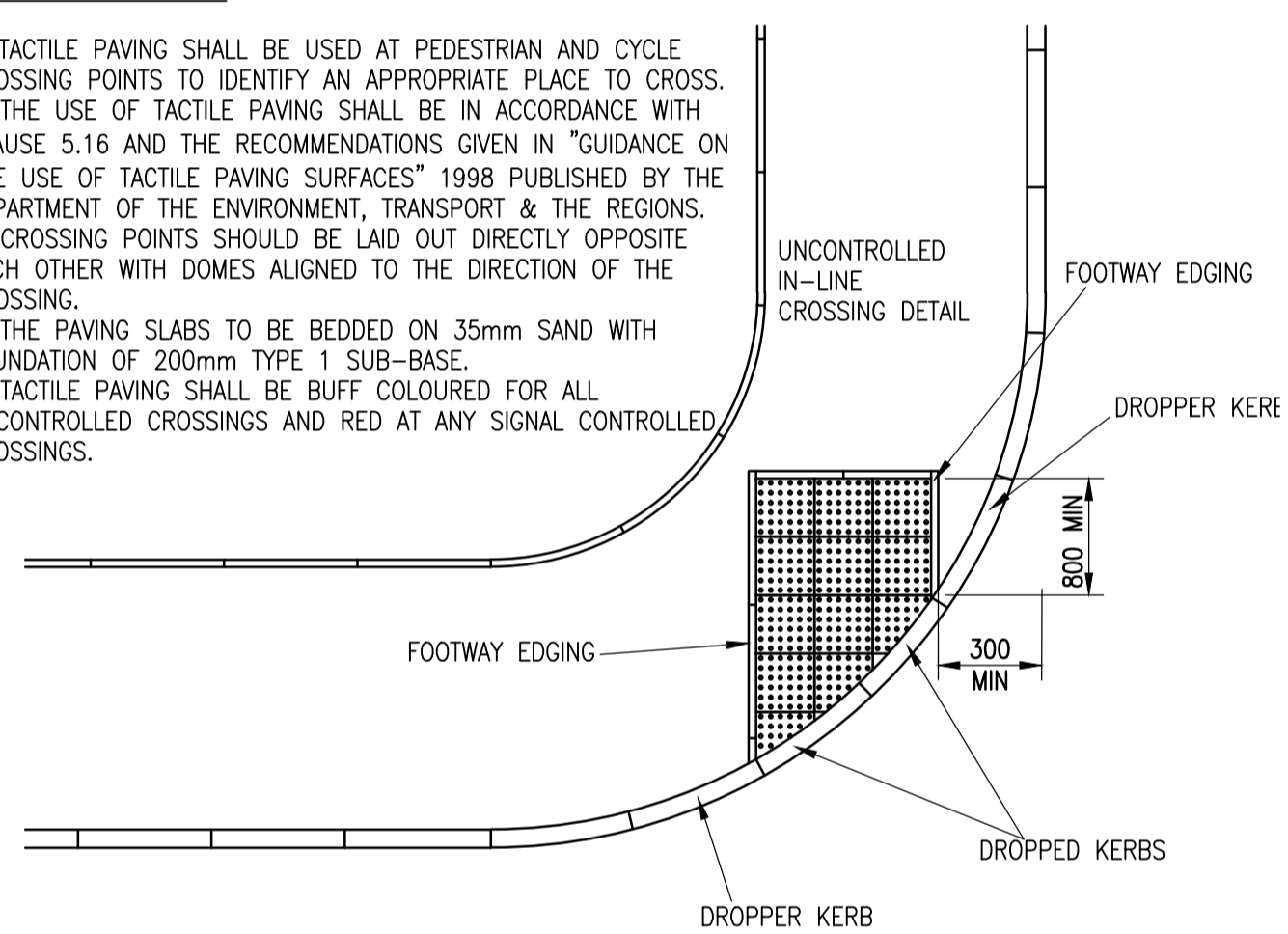
- GENERAL NOTES.**
- DO NOT SCALE THIS DRAWING.
 - THIS DRAWING IS TO BE READ IN CONJUNCTION WITH ALL RELEVANT ARCHITECT'S, ENGINEER'S AND SPECIALIST DRAWINGS AND SPECIFICATIONS.
 - ALL DIMENSIONS ARE IN MILLIMETRES UNLESS NOTED OTHERWISE. ALL LEVELS ARE IN METRES UNLESS NOTED OTHERWISE.
 - ANY DISCREPANCIES NOTED ON SITE ARE TO BE REPORTED TO THE ENGINEER IMMEDIATELY.
 - THE CONTRACTOR IS RESPONSIBLE FOR ENSURING THAT ALL WORKS ARE TO THE SATISFACTION OF THE ENGINEER, AND SHALL BE DEEMED TO HAVE INCLUDED IN HIS RATES FOR ANY NECESSARY TESTING.
 - BITUMINOUS SPRAY TO BE APPLIED TO ALL EXISTING SURFACES WHERE DIRECTLY OVERLAID BY BITUMINOUS MATERIAL. RATE OF SPREAD TO BE 0.4-0.6 LITRES PER SQUARE METRE.
 - ALL WORKS SHALL BE CARRIED OUT IN ACCORDANCE WITH THE OXFORDSHIRE COUNTY COUNCIL DESIGN GUIDE.
 - CLAUSES REFER TO THE SPECIFICATION FOR HIGHWAY WORKS, UNLESS OTHERWISE STATED.

TACTILE PAVING NOTES:

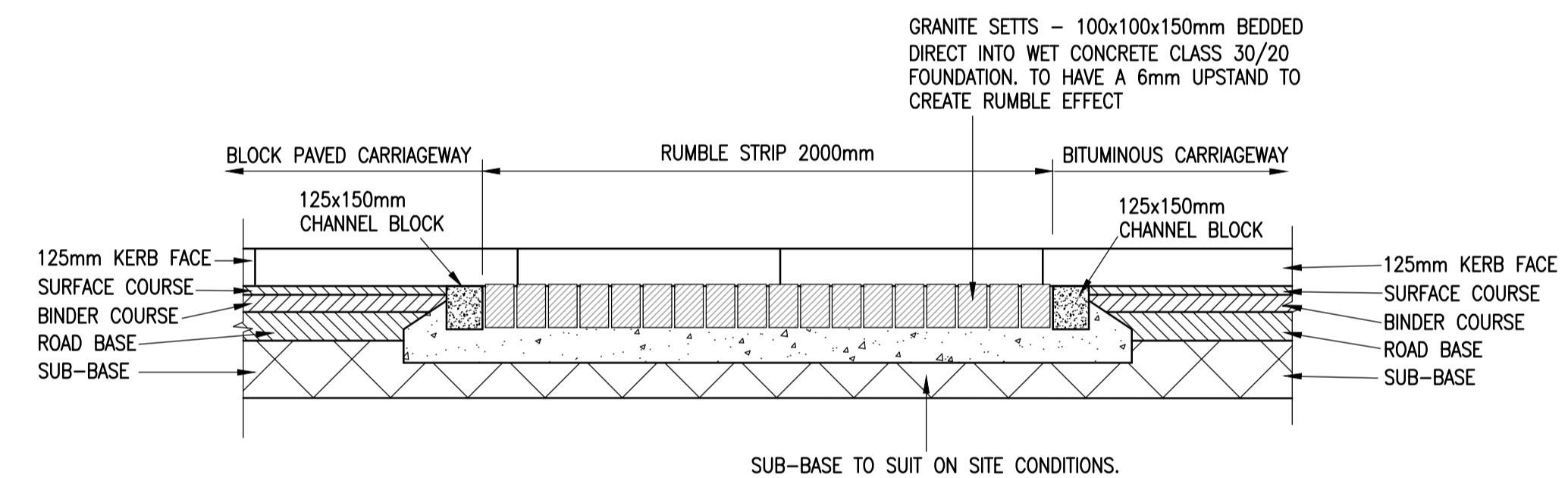
- TACTILE PAVING SHALL BE USED AT PEDESTRIAN AND CYCLE CROSSING POINTS TO IDENTIFY AN APPROPRIATE PLACE TO CROSS.
- THE USE OF TACTILE PAVING SHALL BE IN ACCORDANCE WITH CLAUSE 5.16 AND THE RECOMMENDATIONS GIVEN IN "GUIDANCE ON THE USE OF TACTILE PAVING SURFACES" 1998 PUBLISHED BY THE DEPARTMENT OF THE ENVIRONMENT, TRANSPORT & THE REGIONS.
- CROSSING POINTS SHOULD BE LAID OUT DIRECTLY OPPOSITE EACH OTHER WITH DOMES ALIGNED TO THE DIRECTION OF THE CROSSING.
- THE PAVING SLABS TO BE BEDDED ON 35mm SAND WITH FOUNDATION OF 200mm TYPE 1 SUB-BASE.
- TACTILE PAVING SHALL BE BUFF COLOURED FOR ALL UNCONTROLLED CROSSINGS AND RED AT ANY SIGNAL CONTROLLED CROSSINGS.



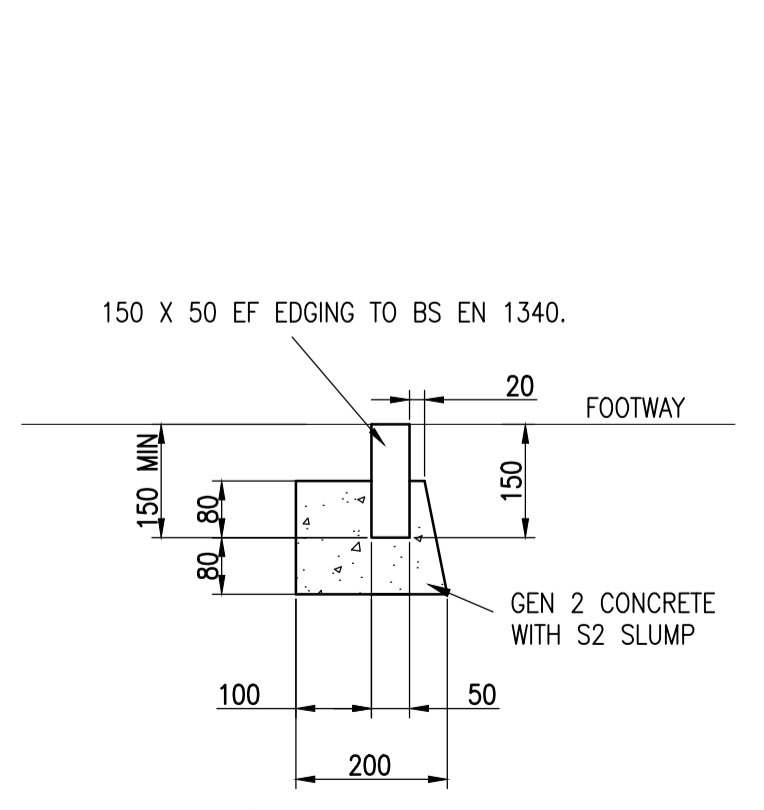
PEDESTRIAN / VEHICLE DROPPED CROSSING DETAILS
NTS



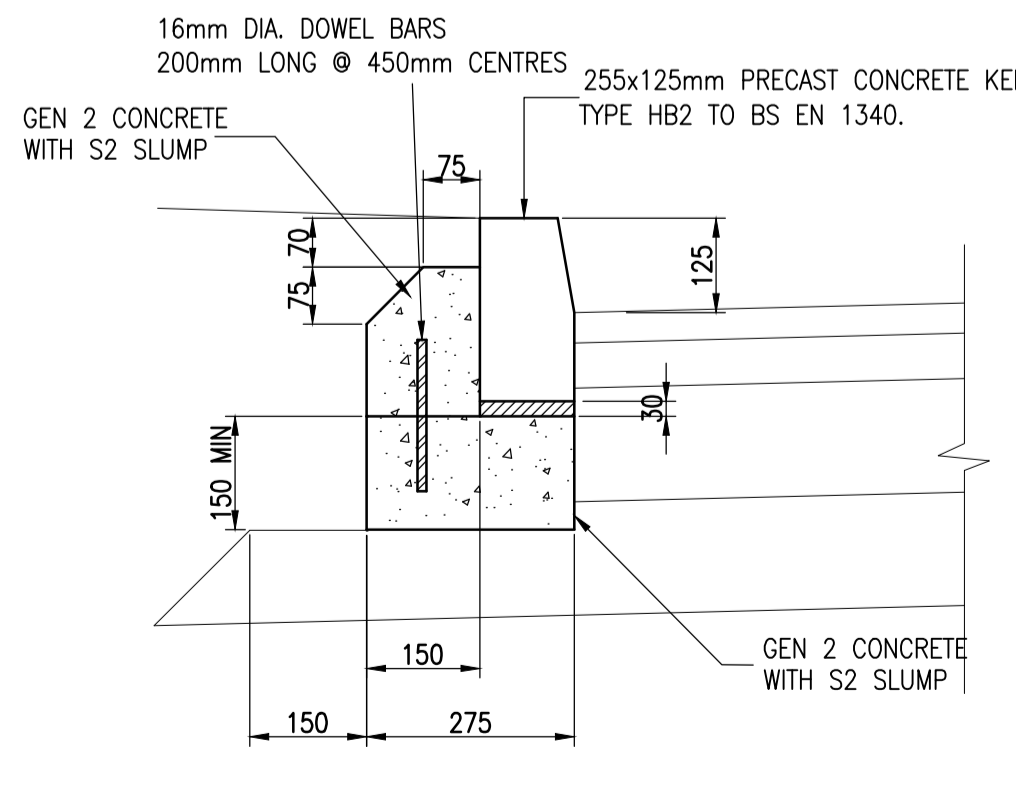
TYPICAL TACTILE CROSSING LAYOUT
Scale 1:50



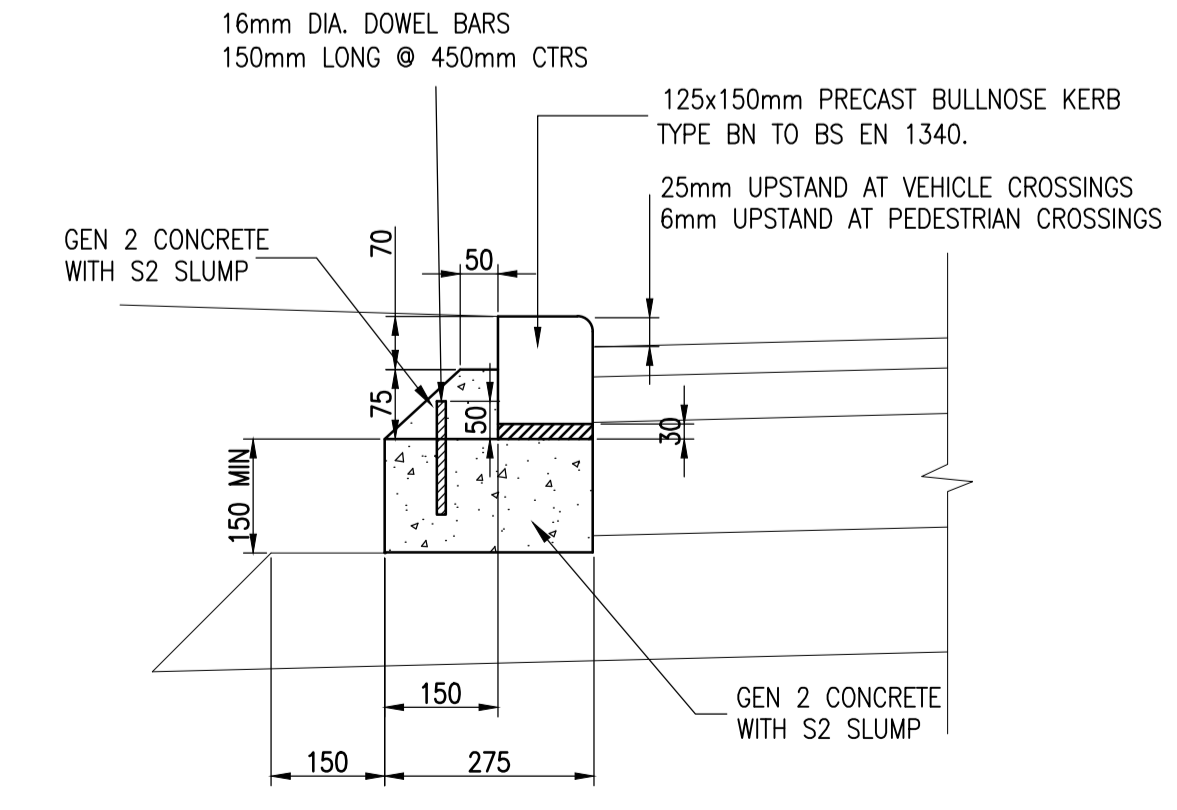
GRANITE SETT RUMBLE STRIP DETAIL
SCALE 1:20



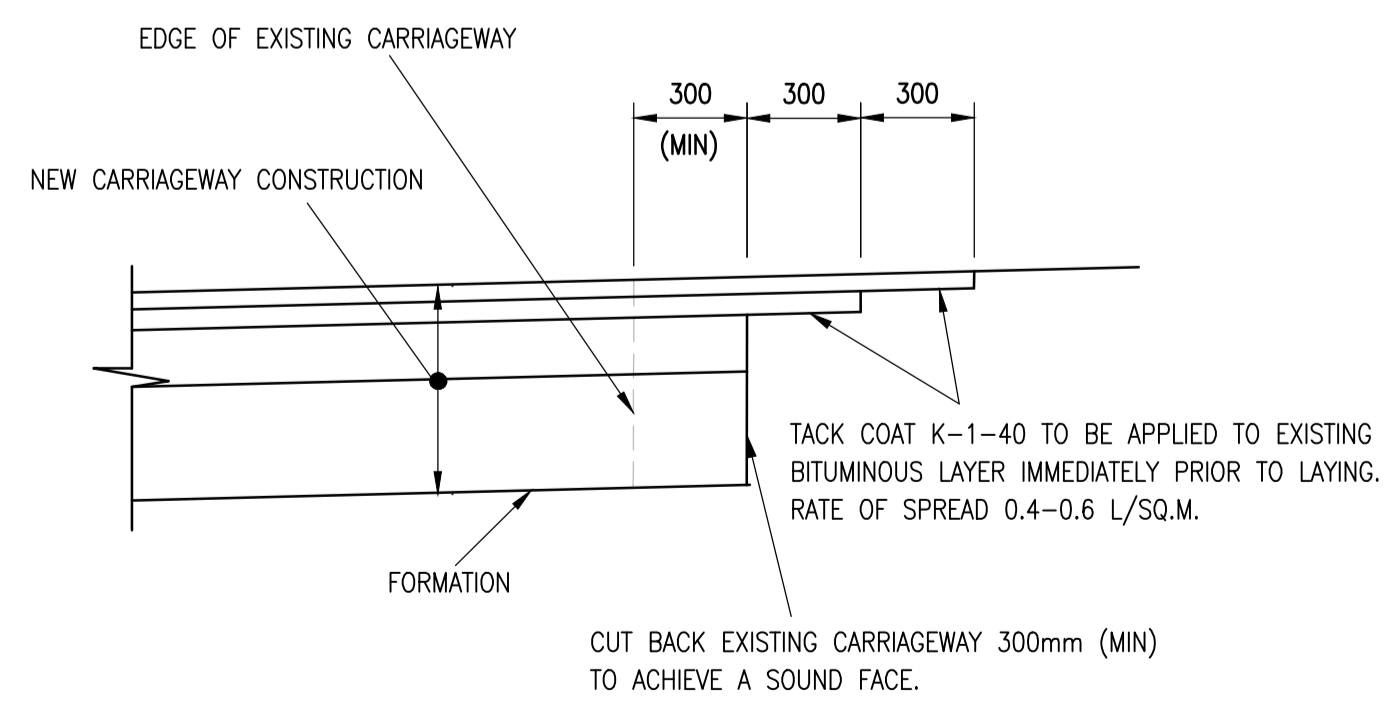
FOOTWAY/VERGE EDGING DETAIL
SCALE 1:10



HALF BATTERED KERB
SCALE 1:10



BULLNOSE DROPPED KERB
SCALE 1:10



CARRIAGEWAY TIE-IN DETAIL
SCALE 1:20

REV: A	RAMP DETAIL REMOVED, RUMBLE STRIP ADDED	KM	KA	10.10.14
REV: AMENDMENTS:		DRN	CHK:	DATE:
PROJECT: LONGFORD PARK BODICOTE BANBURY				
DRAWING TITLE: PHASE 2 HIGHWAY CONSTRUCTION DETAILS SHEET 2 OF 2				
CLIENT: BARRATT HOMES, BOVIS HOMES, TAYLOR WIMPEY				
DRAWING NUMBER: 20488_02_080_03.2				
REVISION: A	SHEET SIZE: A1	SCALE: AS SHOWN		
DRAWN BY: TW	CHECKED BY: JF	DATE: 29.08.14		
STATUS: TENDER				
<small>Wellington House Leicester Road Bstock Leicestershire LE67 6HP T: 01530 264 753 F: 01530 588 116 bstock@m-ec.co.uk www.m-ec.co.uk</small>				
<small>ORDNANCE SURVEY © CROWN COPYRIGHT 2014. ALL RIGHTS RESERVED. LICENCE NUMBER 100022432.</small>				

File Location: T:\M-EC Job Books\20488\Drawings\m-ec\panel b & c\02 series-infrastructure\080 series\20488_02_080_03 rev a phase2 highway construction details.dwg
 Printed: 10.10.2014