

**KEY**

**SEWER KEY**

- Foul drain (private/non-adoptable)
- Surface water drain (private/non-adoptable)
- Foul sewer (Adoptable)
- Surface water drain (Adoptable)
- Highway Drain (Adoptable)

**CHAMBER KEY**

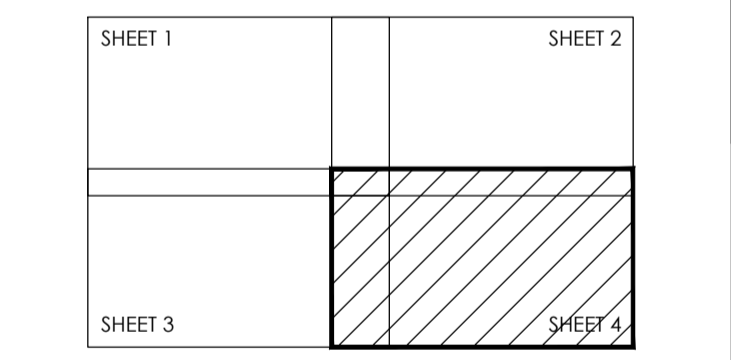
- Mini access chamber MAC - (300mm $\phi$ )
- PPVC - (475mm  $\phi$ ), CP=Catchpit
- Type 3/4 SFA 7th Edition Inspection Chamber
- Manhole Type 2 SFA 7th Edition Manhole
- Rain Water Harvesting Unit Type = TBC

**General note**  
(Note sizes may need to increase dependant on number of incoming pipes see standard detail drawing)

- re Surface water rodding eye
- F1 Manhole number
- Entrance into building
- Soil Vent Pipe/Soil Stack
- Rain water down pipe (roddable access)
- YG Yard gully (150 - 200 mm $\phi$  trapped)
- fg Floor Gully (trapped)
- Linear drainage channel
- Cellular storage (Refer to drawing for sizes)
- RWP cellular discharge/collection unit
- FFL XX.XXX Finished floor level
- Retaining Wall
- Permeable Block Paving - Andover/Woburn range
- Permeable Block Paving - Infitra range
- Sedum roof
- Infiltration trench to green lanes

**Soakaway Sizes Key**

Soakaway A = 2.0m x 3.0m x 0.8m deep  
 Soakaway B = 1.5m x 2.0m x 0.8m deep  
 Soakaway C = 3.0m x 3.5m x 0.8m deep  
 Soakaway D = 3.0m x 3.0m x 1.2m deep  
 Soakaway E = 4.0m x 5.0m x 0.8m deep  
 Soakaway F = 1.0m x 3.0m x 0.8m deep



**WILLMOTT DIXON HOUSING REVIEWED**

PRELIMINARY	STATUS
FOR COMMENT	A
FOR CONSTRUCTION	B
SIGNED	C

DATE

**TITLE**

Proposed Drainage Arrangement  
 Sheet 4 of 4  
 Bicester Southfields Eco Village  
 Bicester  
 Oxon

**DRAWING NUMBER**  
 12-1196-03 Sheet 4 of 4 Rev P2



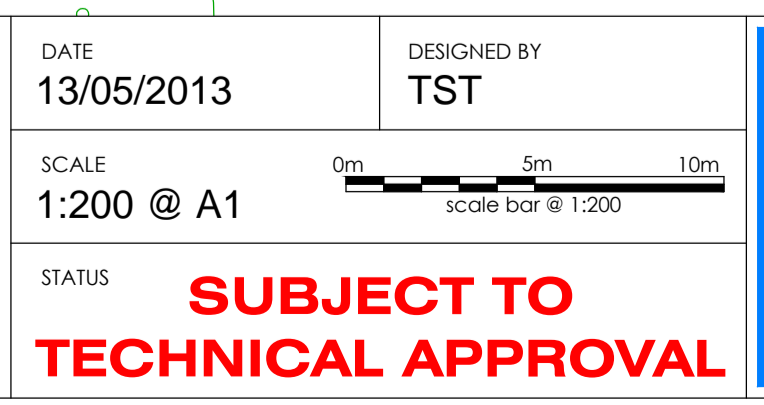
Rev	Drawn by	CHK'd by	Comments	Date	NOTES
P1	TST	DJ		13/05/13	
P2	NJ	TST	3VP and RWP positions updated	01/11/13	

- All dimensions and levels are in metres unless otherwise noted
- This drawing is to be read in conjunction with the relevant Architect's/Engineer's drawings, specifications and CDM documentation
- This drawings has been produced electronically and may have been photo reduced or enlarged when copied. Work to figures and dimensions only (DO NOT SCALE). All dimensions to be checked on site. Any errors or omissions to be reported to the engineer immediately.
- This drawing contains coloured lines / information that may not be clear if reproduced in black and white.

DATE	DESIGNED BY
13/05/2013	TST

SCALE: 1:200 @ A1

STATUS: **SUBJECT TO TECHNICAL APPROVAL**



**INFRASTRUCT CS LTD**  
 Consulting Civil and Structural Engineers

Station Point, Old Station Way, Eynsham, Oxford  
 Tel: 01865 861672  
 Email: info@infrastructcs.co.uk  
 Web: www.infrastructcs.co.uk