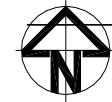


FOR CONTINUATION
SEE DWG 7239
MATCH LINE

- GENERAL NOTES
- REFER TO DRAWINGS UA001881 / 7247 TO 7250 FOR SURFACING AND KERBING DETAILS
 - REFER TO DRAWING Nos UA001881 / 7253 TO 7256 FOR DRAINAGE DETAILS

Refer to planting plant 701-306 to 701-309 for trees along the spine road.



- KEY
- PROPOSED ADOPTABLE CARRIAGEWAY
 - PROPOSED ADOPTABLE FOOTWAY
 - PROPOSED COMMUNITY FOOTPATH
 - PROPOSED ADOPTABLE VERGE
 - PROPOSED ADOPTABLE ROADSIDE SUDS FEATURE
 - PROPOSED SUDS/POND FEATURE
 - POND MAINTENANCE ACCESS (3.0m Wide)
 - PROPOSED COMMUNITY STREET CONNECTION
 - GATEWAY FEATURE (DETAIL IN ABEYANCE)
 - VISIBILITY SPLAY - CONDITIONED RELATING TO HOUSEHOLD COVENANT
 - FOOTWAY VEHICULAR CROSSING
 - UNCONTROLLED CROSSING POINT
 - 4.0m FORWARD VISIBILITY SPLAY
 - 2.4m x 33m VISIBILITY SPLAY
 - 2m x 2m VISIBILITY SPLAY
 - PROPOSED BOLLARD (REFER TO O.C.C. DRAWING No. HSD/1200/220 FOR DETAILS)
 - PROPOSED TREE AND TREE PIT (REFER TO DRAWING Nos. UA001881-701-800 AND 701-801 FOR DETAILS)
 - FULLY ENCLOSED 3 BAY PASSENGER SHELTER, DETAILS T.B.C BY OXFORDSHIRE C.C.
 - FOOTWAY EDGING
 - SUDS FEATURE
 - DROP KERB TYPE
 - STANDARD KERB 125mm UPSTAND GENERAL
 - KASSEL KERB
 - FLUSH KERB TYPE
 - KERB DRAINAGE BLOCK
 - DROPPED KERB DRAINAGE BLOCK

Issue	Description	Date
F	ROAD LAYOUT REVISED	08/06/15
E	BASE PLAN UPDATED	20/03/15
D	NOTES ADDED	17/04/14
C	GENERAL REVISIONS	04/04/14
B	MINOR REVISIONS	11/03/14
A	CONSTRUCTION ISSUE	09/08/13
14	ROAD CROSSING ADDED AT CH. 631	17/05/13
13	TREE LAYOUT REVISED	25/03/13
12	HIGHWAY BOUNDARY REVISED	06/11/12
11	SPINE ROAD TREE LAYOUT REVISED	26/10/12
10	GENERAL REVISIONS	18/10/12
09	MASTERPLAN REVISED	05/10/12
08	FOOTPATHS REVISED	07/09/12
07	MINOR REVISIONS	11/07/12
06	REVISED TO OCC COMMENTS	MAR 12
05	CARRIAGEWAY WIDTHS & BUS STOPS REVISED	02 DEC 11
04	FUTURE BUS STOP AND SPEED TABLE ADDED	04 NOV 11

Status	FOR CONSTRUCTION	
Scales	1:500	Author M.LLEWELIN
Original Size	A1	Checker S.A.DAVIES
Height Datum	O.S.	Approver S.A.DAVIES
Grid	O.S.	Copyright reserved

Client: File name: 240-UA001881-UP210-538-F-GENERAL ARRANGEMENT.DWG

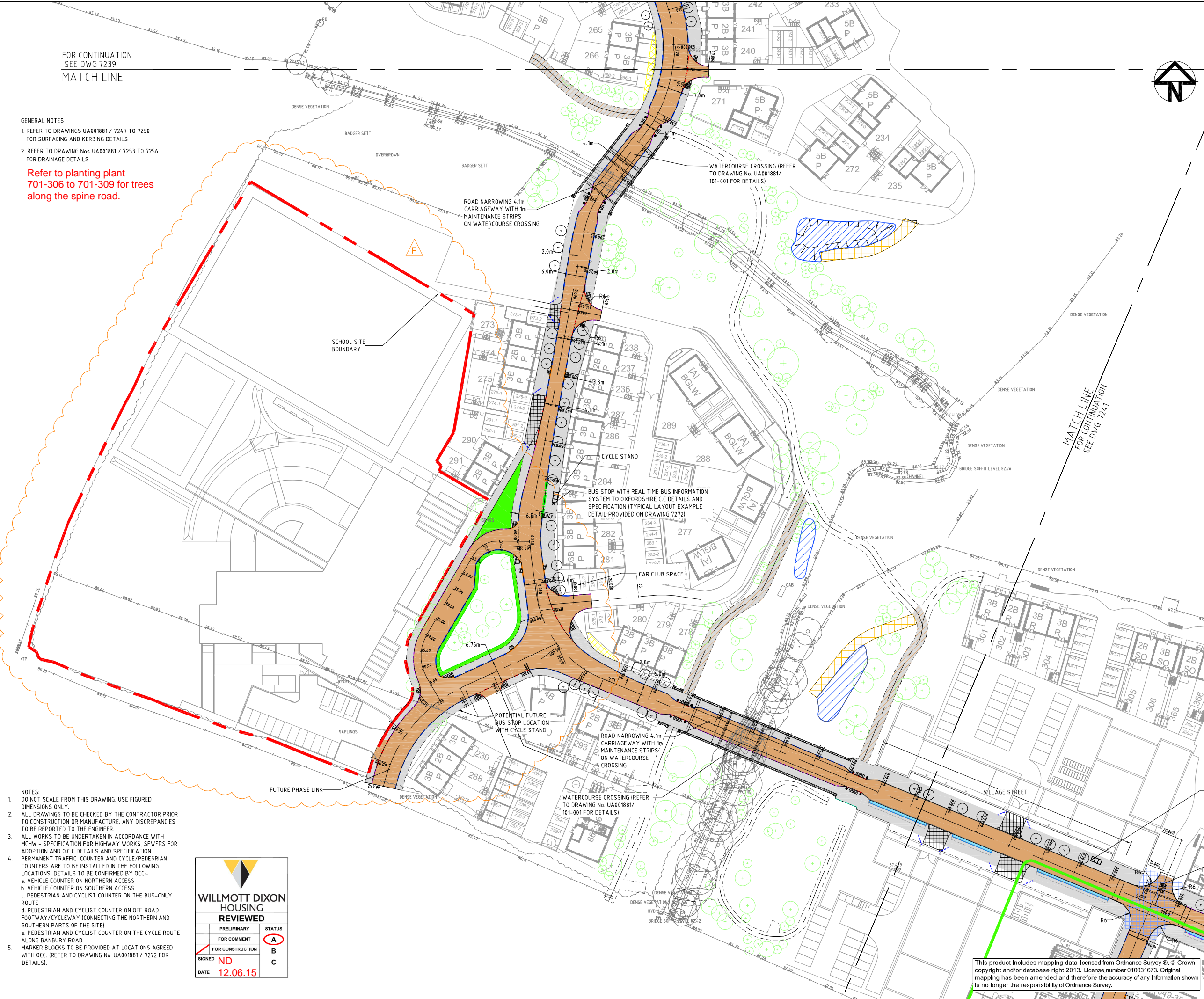


Hyder Consulting (UK) Limited
HCL House
St. Mellons Business Park
Forran Road, St Mellons
Cardiff
CF3 0EY
Tel: +44 029 20926700
Fax: +44 029 20925222

Project: BICESTER ECO DEVELOPMENT EXEMPLAR SITE

Title: SPINE ROAD (S38) GENERAL ARRANGEMENT SHEET 3 OF 4

Drawing No.	Project No.	Issue
7240	UA001881	F



- NOTES:
- DO NOT SCALE FROM THIS DRAWING. USE FIGURED DIMENSIONS ONLY.
 - ALL DRAWINGS TO BE CHECKED BY THE CONTRACTOR PRIOR TO CONSTRUCTION OR MANUFACTURE. ANY DISCREPANCIES TO BE REPORTED TO THE ENGINEER.
 - ALL WORKS TO BE UNDERTAKEN IN ACCORDANCE WITH MCHW - SPECIFICATION FOR HIGHWAY WORKS, SEWERS FOR ADOPTION AND O.C.C. DETAILS AND SPECIFICATION PERMANENT TRAFFIC COUNTER AND CYCLE/PEDESTRIAN COUNTERS ARE TO BE INSTALLED IN THE FOLLOWING LOCATIONS. DETAILS TO BE CONFIRMED BY OCC:
 - VEHICLE COUNTER ON NORTHERN ACCESS
 - VEHICLE COUNTER ON SOUTHERN ACCESS
 - PEDESTRIAN AND CYCLIST COUNTER ON THE BUS-ONLY ROUTE
 - PEDESTRIAN AND CYCLIST COUNTER ON OFF ROAD FOOTWAY/CYCLEWAY (CONNECTING THE NORTHERN AND SOUTHERN PARTS OF THE SITE)
 - PEDESTRIAN AND CYCLIST COUNTER ON THE CYCLE ROUTE ALONG BANBURY ROAD
 - MARKER BLOCKS TO BE PROVIDED AT LOCATIONS AGREED WITH OCC. (REFER TO DRAWING No. UA001881 / 7272 FOR DETAILS).

WILLMOTT DIXON HOUSING REVIEWED

PRELIMINARY	STATUS
FOR COMMENT	A
FOR CONSTRUCTION	B
SIGNED ND	C
DATE 12.06.15	

This product includes mapping data licensed from Ordnance Survey ©. © Crown copyright and/or database right 2013. License number 010031673. Original mapping has been amended and therefore the accuracy of any information shown is no longer the responsibility of Ordnance Survey.