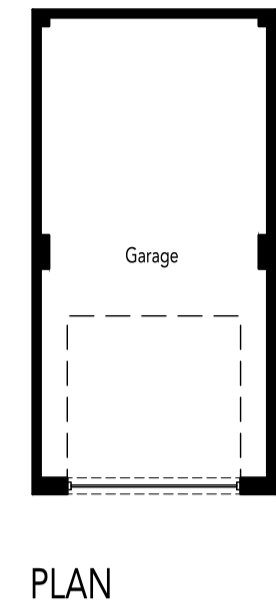
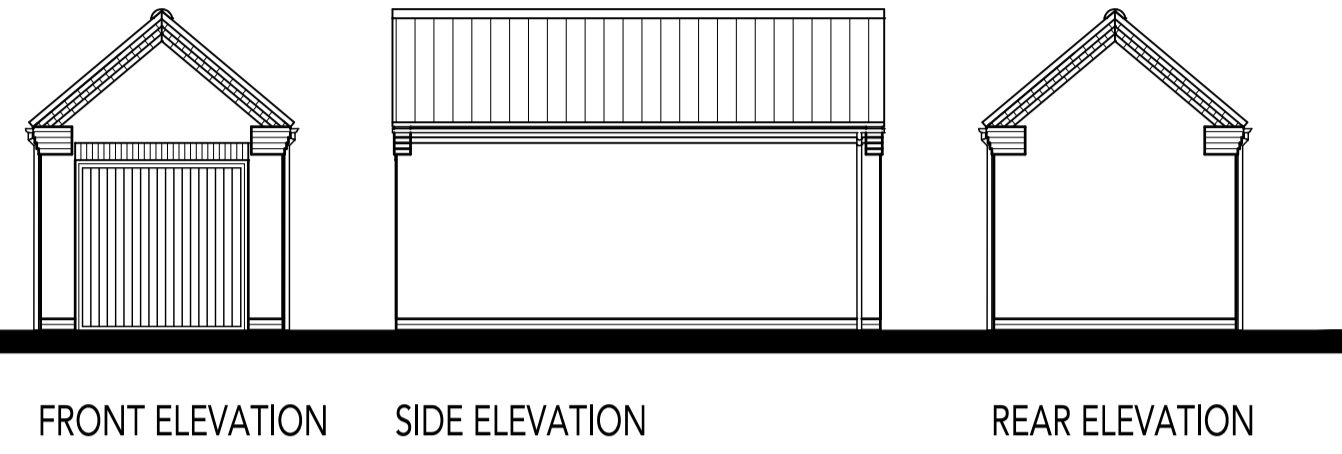


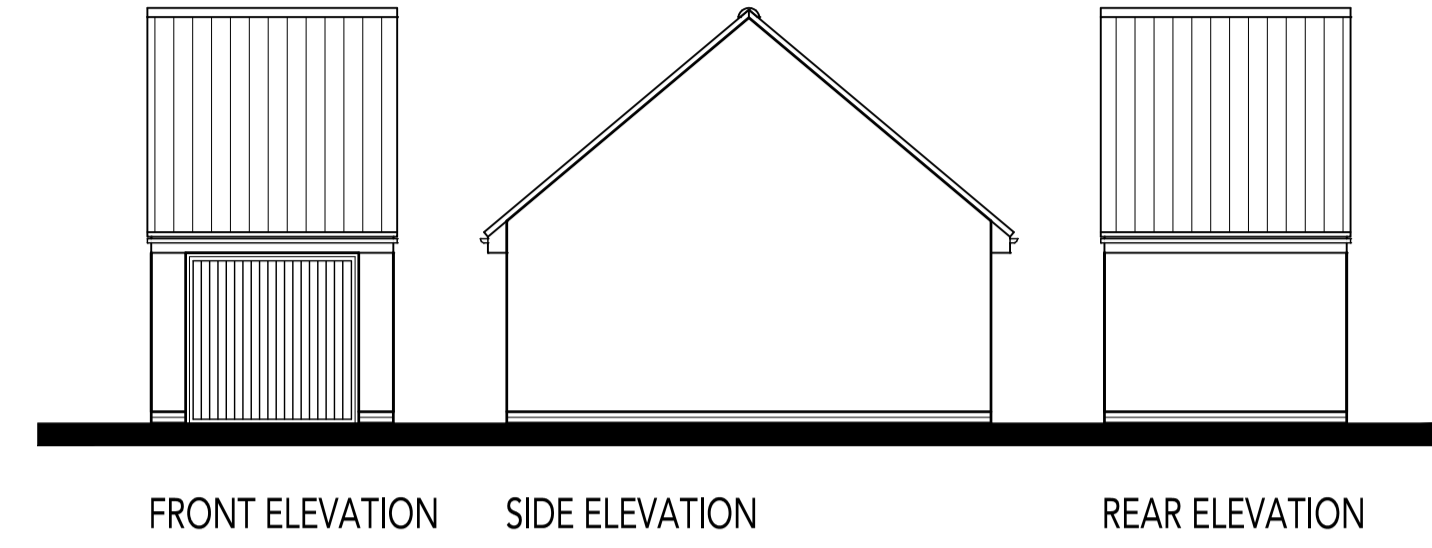


REVISIONS:

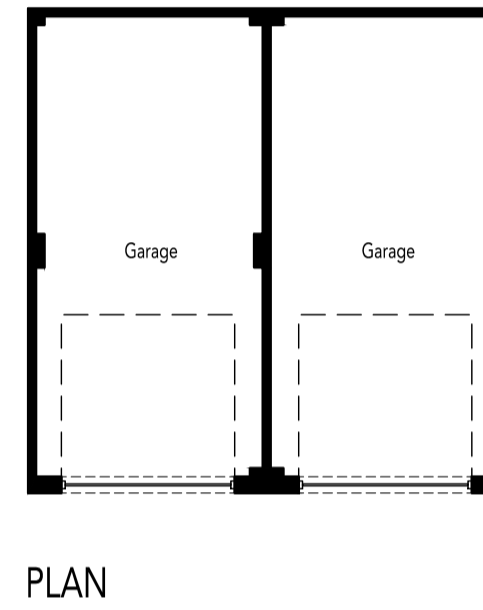
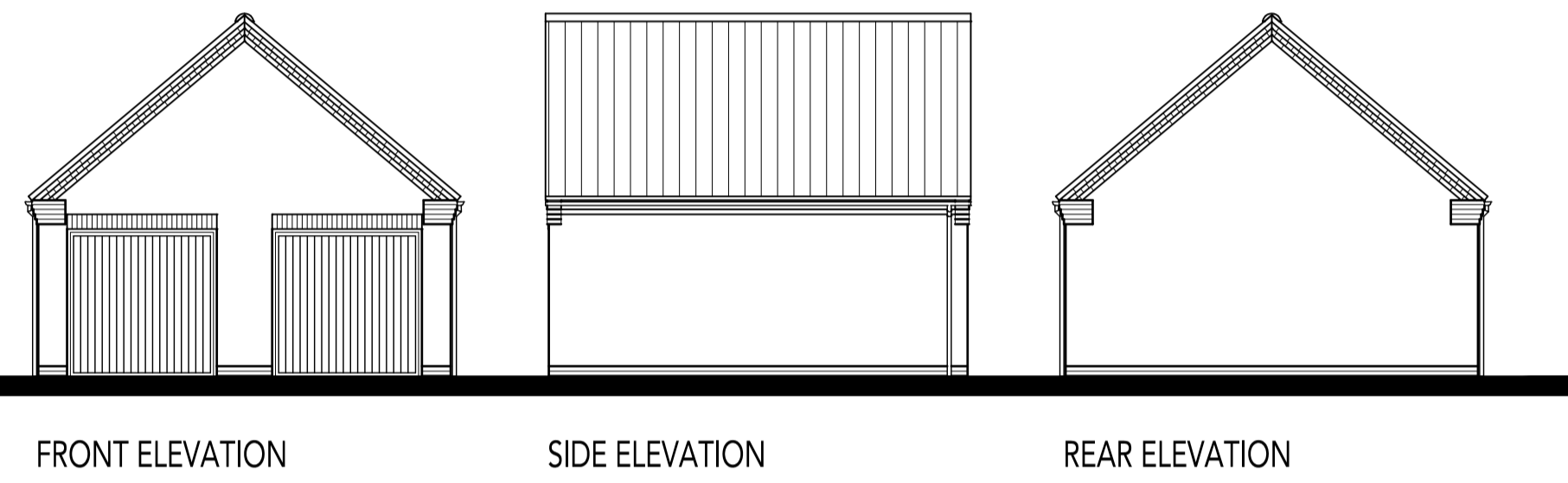
CORE HOUSING EAST



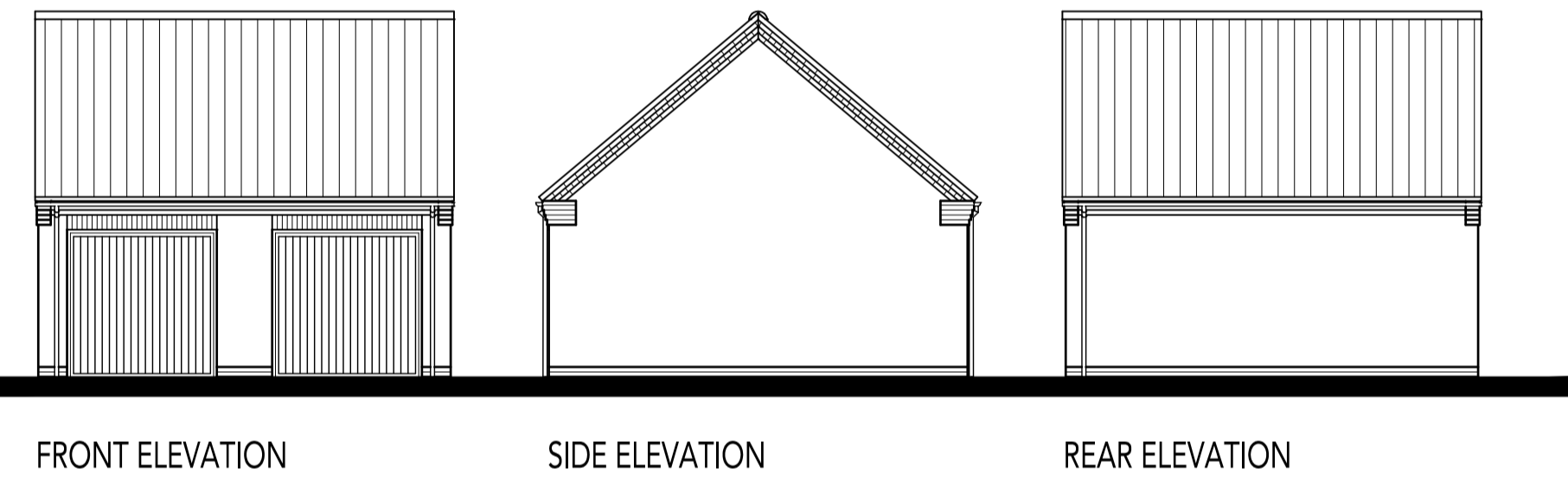
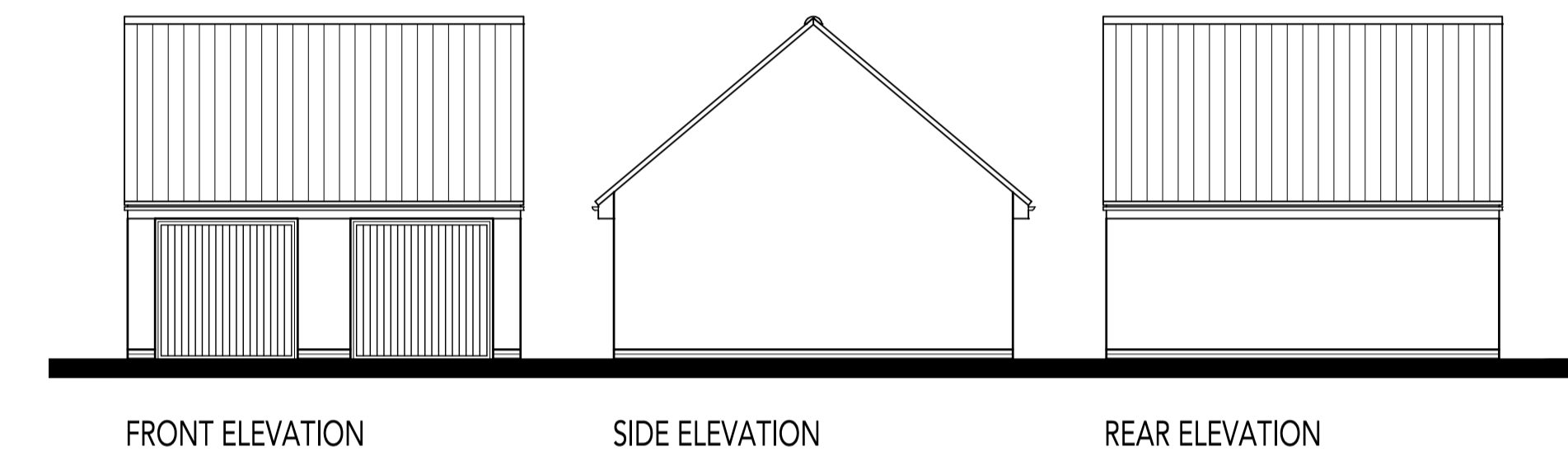
VILLAGE GREEN



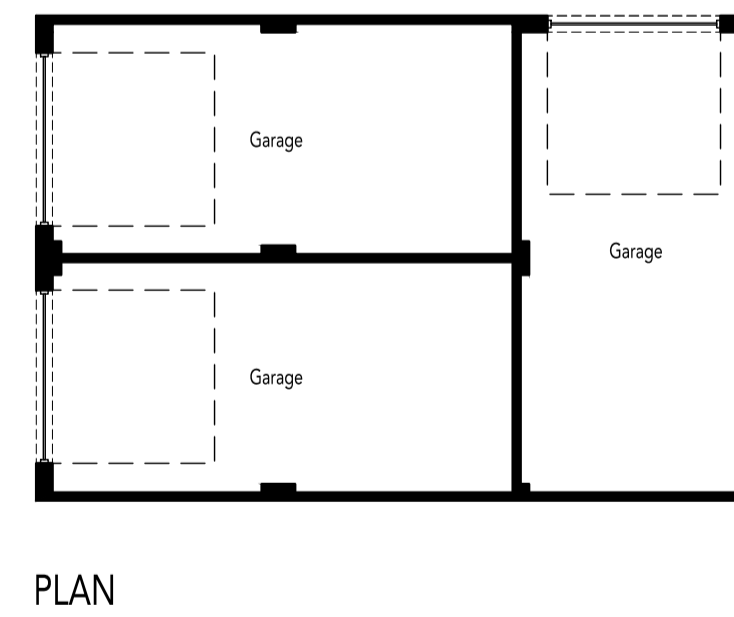
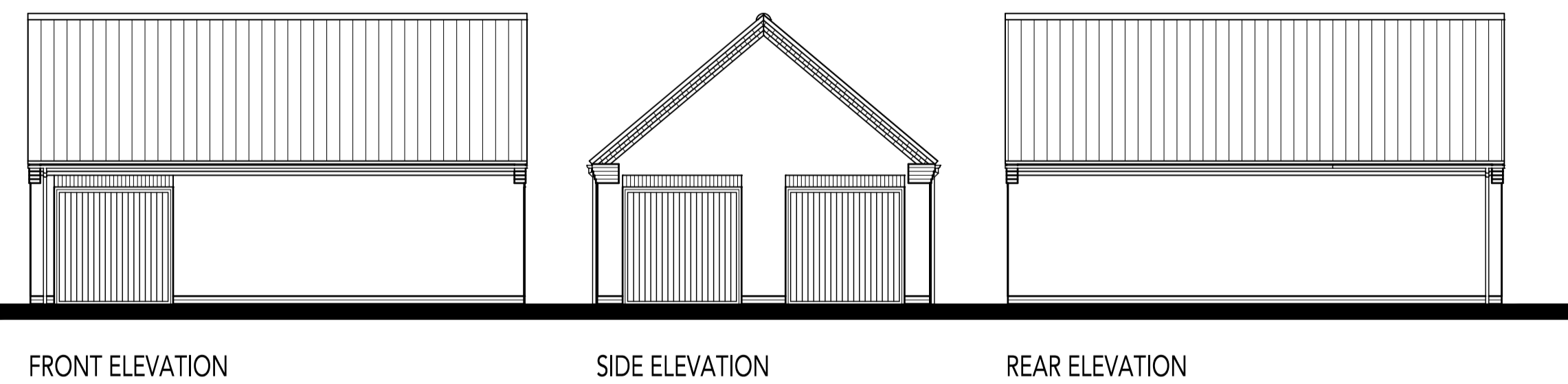
DOUBLE GARAGE



DOUBLE GARAGE



TRIPLE GARAGE



N.B. For facing & Roofing Materials please refer to the Materials Layout Dwg. No. 0521-PH5-108.
For personnel door locations please refer to the External Works Layout Dwg. No. 0521-PH5-104.