

CAT & DOG PROOF FENCE



**IMPLEMENTATION AND MAINTENANCE GUIDELINES**

**1.0 GENERAL**

All plants shall conform to BS 3036 and be in accordance with the National Plant Specification. Supplying nurseries shall be registered under the HTA Nursery Certification Scheme. All plants shall be packed and transported in accordance with the Code of Practice for Plant Handling as produced by CPSE. Planting shall not be carried out when the ground is waterlogged, frostbound or during periods of cold drying winds. All bare root stock shall be root dipped in an approved water-retaining polymer.

If the formation level is compacted it should be ripped through before topsoiling. Recommended topsoil depths are 300mm for shrubs and 150mm for grass.

**2.0 ORNAMENTAL SHRUBS AND TREES**

**2.1 Ground Preparation**

Where necessary treat existing weeds with a glyphosate based herbicide and allow a suitable period as recommended by the manufacturer for this to take effect. A general purpose slow release fertiliser at the rate of 75g/m<sup>2</sup> and Tree Planting and Mulching Compost at the rate of 200g/m<sup>2</sup> are to be incorporated into the top 150mm of topsoil during final cultivations. All extraneous matter such as plastic, wood, metal and stones greater than 50mm in any dimension shall be removed from site.

Tree pits to the specified size are to be excavated and the base broken on a further 150mm with the sides well scarified to prevent smearing. All trees up to and including selected standards are to be supported with single 75mm diameter stakes. All rootball, container grown trees and trees over heavy standard size shall be double stakes. Stakes should be driven 500mm into undisturbed ground before planting the tree, taking care to avoid underground services and cables etc.

**2.2 Planting**

Shrubs and hedges are to be set out as shown on the drawing and planted into the prepared soil at the specified centres with minimal disturbance to the rootball and well formed in.

Trees are to be laid into the pits and backfilled with topsoil incorporating slow release fertiliser and Tree Planting and Mulching Compost as specified. Firm trees in well and secure with proprietary rubber tree ties and spacers.

Water in all trees and shrubs at the end of each day of planting.

Spread ornamental pine bark mulch to a depth of 75mm across all new planting areas, ensuring groundcover plants are not buried.

**2.3 Maintenance**

The landscape contractor shall maintain all areas of new planting for a period of 12 months following practical completion. All stock deemed to be dead, dying or diseased within the defects period shall be replaced by the contractor at his own cost.

The site is to be visited monthly throughout the year to undertake the following operations:

- Weed clearance: All planting areas are to be kept weed free by hand weeding or herbicide treatment. Litter clearance: All litter is to be removed from planting beds.
- Watering: Planting areas are to be brought up to field capacity at each visit and each tree is to receive 20 gallons.
- Checking trees: All tree ties and stakes are to be checked and adjusted if too loose, too tight or if chaffing is occurring. Any broken stakes are to be replaced.
- Formative pruning: Any damaged shoots/branches are to be pruned back to healthy wood. Plants are to be pruned in accordance with good horticultural practice to maintain healthy well-shaped specimens.

**3.0 GRASS**

**3.1 Preparation**

The area to be turfed or seeded shall be sprayed out with a glyphosate herbicide and cultivated to a depth of 100mm removing all weeds, debris and stones over 25mm diameter. The surface shall be raked to smooth leaving contours with a fine rib. Incorporating pre-seeding fertiliser at 70 g/m<sup>2</sup>.

**3.2 Delivery and Storage**

Turf shall be supplied in accordance with BS3306.

Turf shall be Medolfin as supplied by Rowles. It shall be close textured and green in colour and be sufficiently fibrous to withstand handling. Turves shall be regular in shape, 300mm wide and of uniform thickness (minimum 25mm). The grass shall be closely mown and shall not exceed 25mm in height.

Turf shall be stacked in piles of up to 1 metre. It shall not be laid in frosty or waterlogged conditions and shall not be stacked in rolls for more than three days.

**3.3 Turfing operations shall be in accordance with BS 4428.**

Whole turves shall be laid around the perimeter of the area to be turfed. The central area shall be laid in rows with staggered joints, well butted together, working from planks positioned on turves already laid. The turf shall be watered on completion. Any unevenness shall be made good by filling the turf and adjoining levels. Should shrinkage occur, the topped shall be touched into the joints.

**3.4 Seeding**

Grass seed shall be sown in April during calm weather and not when the ground is frost bound or waterlogged. Seed shall be sown in two equal sowings in transverse directions at 35 g/m<sup>2</sup>. After sowing the contractor shall lightly rake the seed into intimate contact with the soil.

**3.5 Infill cut**

When newly seeded and turfed areas reach 50mm they should be lightly rolled and cut to a height of 30mm. All clippings shall be removed. Any bare patches shall be made good at this time. Seeded areas shall be cut for a second time when the sward reaches 50mm high.

**PLANT SCHEDULE**

**TREES**

REF	SPECIES	SUPPLY	SIZE(CM)	GIRTH(CM)	OTRS(M)
T1	Liquidambar styraciflua	EHSd	425/600	16/18	as shown
T2	Tilia cordata 'Greenland'	EHSd	425/600	14/16	as shown
T3	Beula ulms jacquemontii	EHSd	425/600	14/16	as shown
T4	Acer campestre 'Erdnig'	CG	200/250	-	as shown
T5	Pinus nigra	HSD	350/425	12/14	as shown
T6	Sorbus aucuparia 'Chardinal Royal'	HSD	350/425	12/14	as shown
T7	Corylus colurna	HSD	350/425	12/14	as shown
T8	Pyrus calleryana 'Chardiner'	EHSd	425/600	14/16	as shown

All trees to be planted in accordance with the implementation and maintenance guidelines. The tree planting schedule and landscape proposals must be referred to by the Structural Engineer during foundation design. No tree species, size or location should be altered without prior approval from the Landscape Architect, CG - Contractor Ground.

**SPECIMEN SHRUBS**

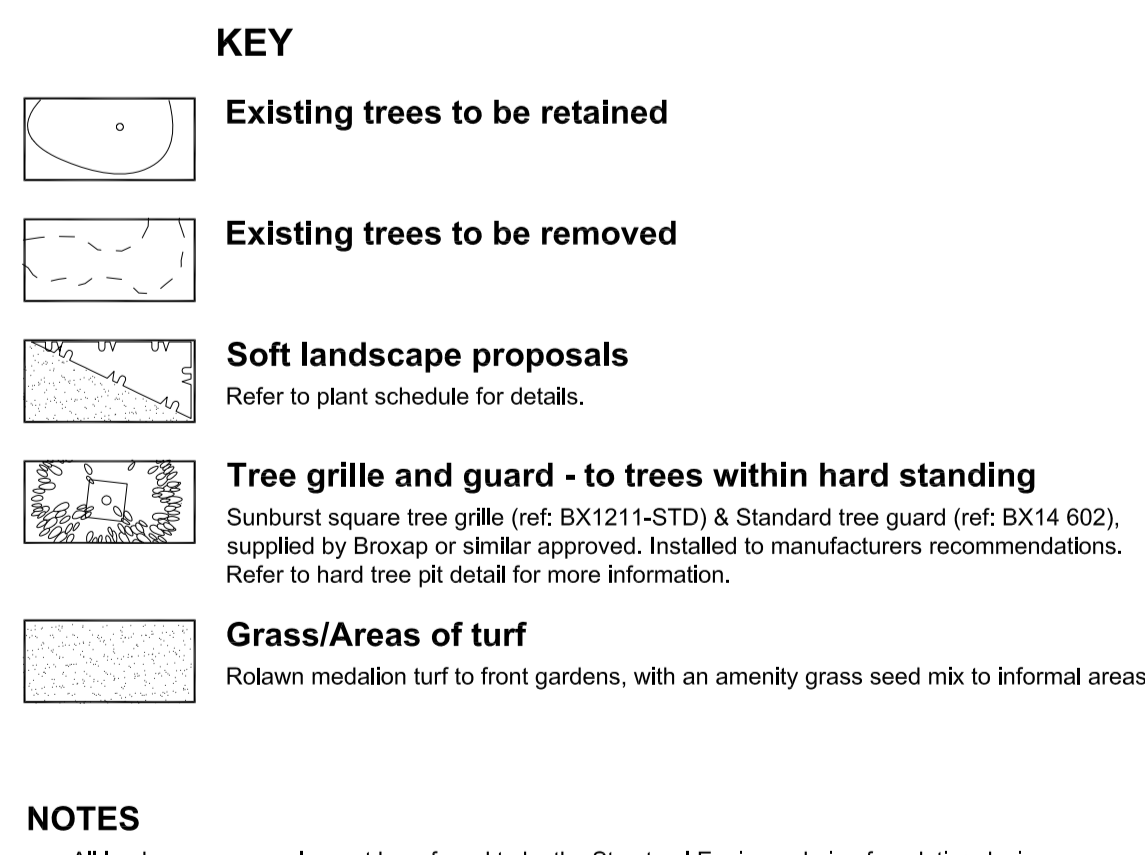
REF	SPECIES	SUPPLY	SIZE(CM)	HABIT	OTRS(M)
S1	Phormium 'Jester'	10L	60/80	Triple Crown as shown	-
S2	Phormium 'Sunlover'	10L	60/80	Triple Crown as shown	-
S3	Phormium 'Yellow View'	10L	60/80	Triple Crown as shown	-

All specimen shrubs to be planted in accordance with the implementation and maintenance guidelines. No feature shrub species, size or location should be altered without prior approval from the Landscape Architect.

**SHRUBS/HERBACEOUS**

ABBR	SPECIES	SUPPLY	SIZE(CM)	HABIT	OTRS(M)
BRASU	Brachyglottis 'Sunshine'	3L	30/40	Bushy	0.70
CEATHR	Ceanothus thyrsiflorus 'repens'	3L	40/80	Bushy	0.60
CHOAP	Chrysothamnus 'Azttec Pearl'	3L	30/40	Bushy	0.70
CHOTES	Chrysanthemum 'Sundance'	3L	30/40	Bushy	0.60
CISSP	Cissampelos 'Silver Peak'	3L	30/40	Bushy	0.60
EUOFOEG	Eucyrtus fortunei 'Emerald Gate'	3L	30/40	Bushy	0.60
EUOFOEG	Eucyrtus fortunei 'Emerald Gate'	3L	30/40	Bushy	0.60
FESGLEB	Festuca glauca 'Blue Blue'	3L	30/40	Bushy	0.60
HEBALRE	Hebe albicans 'Red Edge'	3L	20/30	Bushy	0.60
HEBRAN	Hebe 'Mrs Winder'	3L	20/30	Bushy	0.60
HEBPIS	Hebe pinguifolia 'Sutherlandii'	3L	20/30	Bushy	0.60
HEBPO	Hebe 'Purple Queen'	3L	20/30	Bushy	0.60
HEBRA	Hebe rakaiensis	3L	20/30	Bushy	0.60
HEUKLP	Heuchera 'Key Lime Pie'	3L	-	Full Pot	0.50
HEUMIPP	Heuchera micrantha 'Palace Purple'	3L	-	Full Pot	0.50
HYPHI	Hypocheris 'Helen'	3L	30/40	Bushy	0.70
LAVANMU	Lavandula angustifolia 'Munstead'	3L	20/30	Bushy	0.50
LONNIBG	Lonicera nitida 'Baggage's Gold'	3L	30/40	Bushy	0.70
LONNIBG	Lonicera nitida 'May Green'	3L	30/40	Bushy	0.60
MAHAQAP	Mahonia aquifolium 'Apollin'	3L	20/30	Bushy	0.60
PIEJAD	Pieris japonica 'Dulcinea'	3L	30/40	Bushy	0.60
PRULAOL	Prunus laurocerasus 'Otto Luyken'	3L	30/40	Bushy	0.70
ROSOFP	Rosmarinus officinalis	3L	30/40	Bushy	0.70
SKLIARU	Skinia japonica 'Rubra'	3L	30/40	Bushy	0.60
VIBDA	Viburnum davidii	3L	20/30	Bushy	0.60

All shrubs to be planted in accordance with the implementation and maintenance guidelines. No shrub species, size or location should be altered without prior approval from the Landscape Architect.



**NOTES**

- All landscape proposals must be referred to by the Structural Engineer during foundation design.
- Soil operations to be carried out in accordance with the implementation and maintenance guidelines.
- All planting to be in accordance with the implementation and maintenance guidelines.
- No species, variety, size or position to be amended without the Landscape Architects prior approval.
- Before trees are planted, the Landscape Contractor shall ascertain the location of drains from the site manager, and shall if necessary make minor adjustments to tree positions to ensure that they are planted at least 1.5m from drains. They should however be planted no closer than is shown on the drawing, and if shown located in shrub beds, the shape of the latter should be adjusted if necessary to accommodate the revised tree position.
- All planting must be mulched in accordance with the implementation and maintenance guidelines.
- If planting is required outside the October-March season, bare root shrubs will be replaced by 3L pot grown plants, and trees will be replaced by a containerised equivalent to be approved by the project landscape architect.