

2720 | WOODSTOCK EAST LIA | Appendix 1 | 21st November 2014



CONTENTS

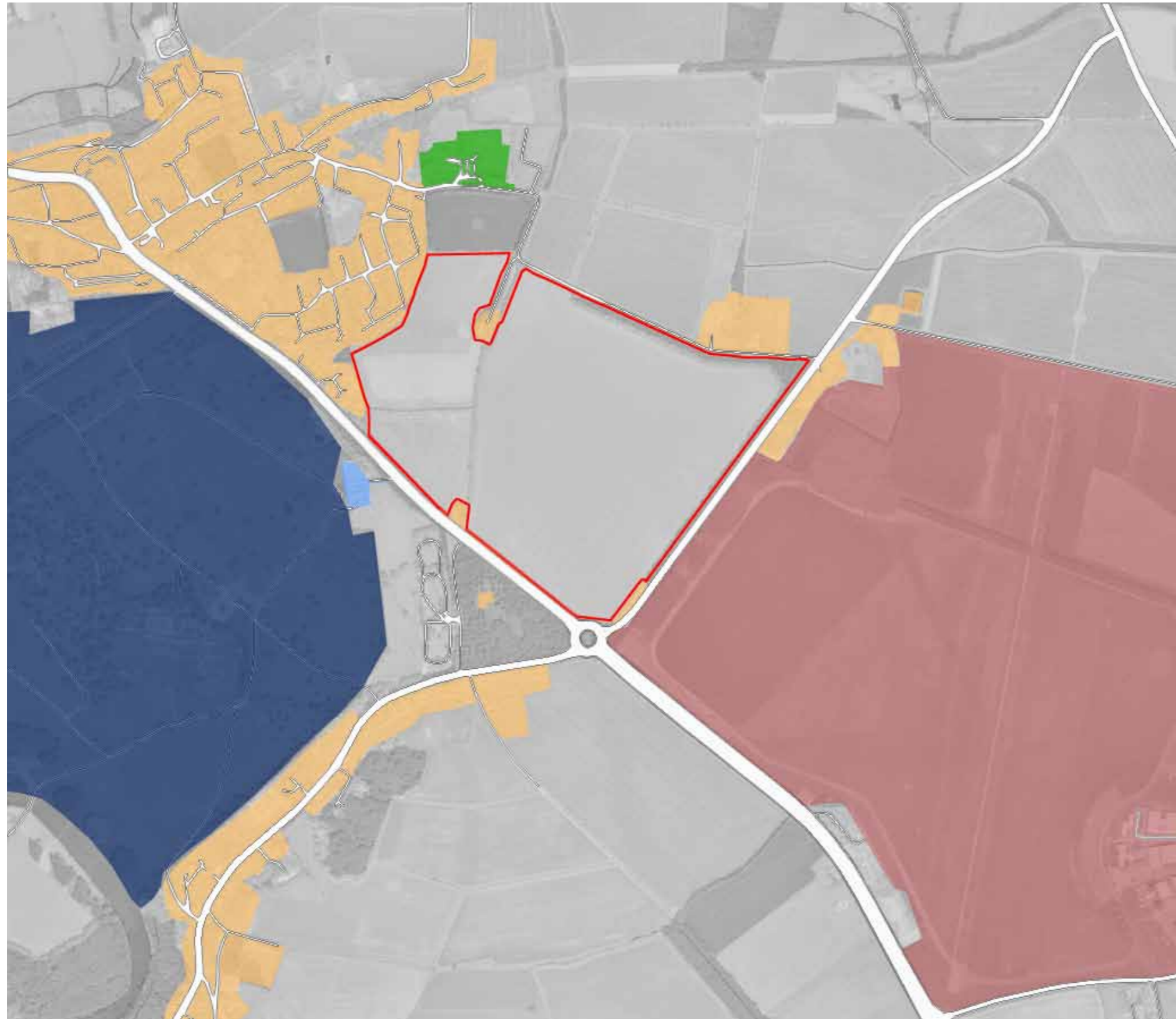
BASELINE MAP - SITE PLAN	p.3
BASELINE MAP - SURROUNDING LAND USE	p.4
BASELINE MAP - PRINCIPAL RECEPTORS	p.5
BASELINE MAP - SURROUNDING LANDSCAPE	p.6
BASELINE MAP - EXISTING LIGHTING	p.7
AREA A - EXISTING LIGHTING	p.8
AREA B - EXISTING LIGHTING	p.9
AREA C - EXISTING LIGHTING	p.10
BASELINE MAP - EXISTING LIGHTING	p.11

Baseline Map - Site Plan



— Site Boundary

Baseline Map - Surrounding Uses

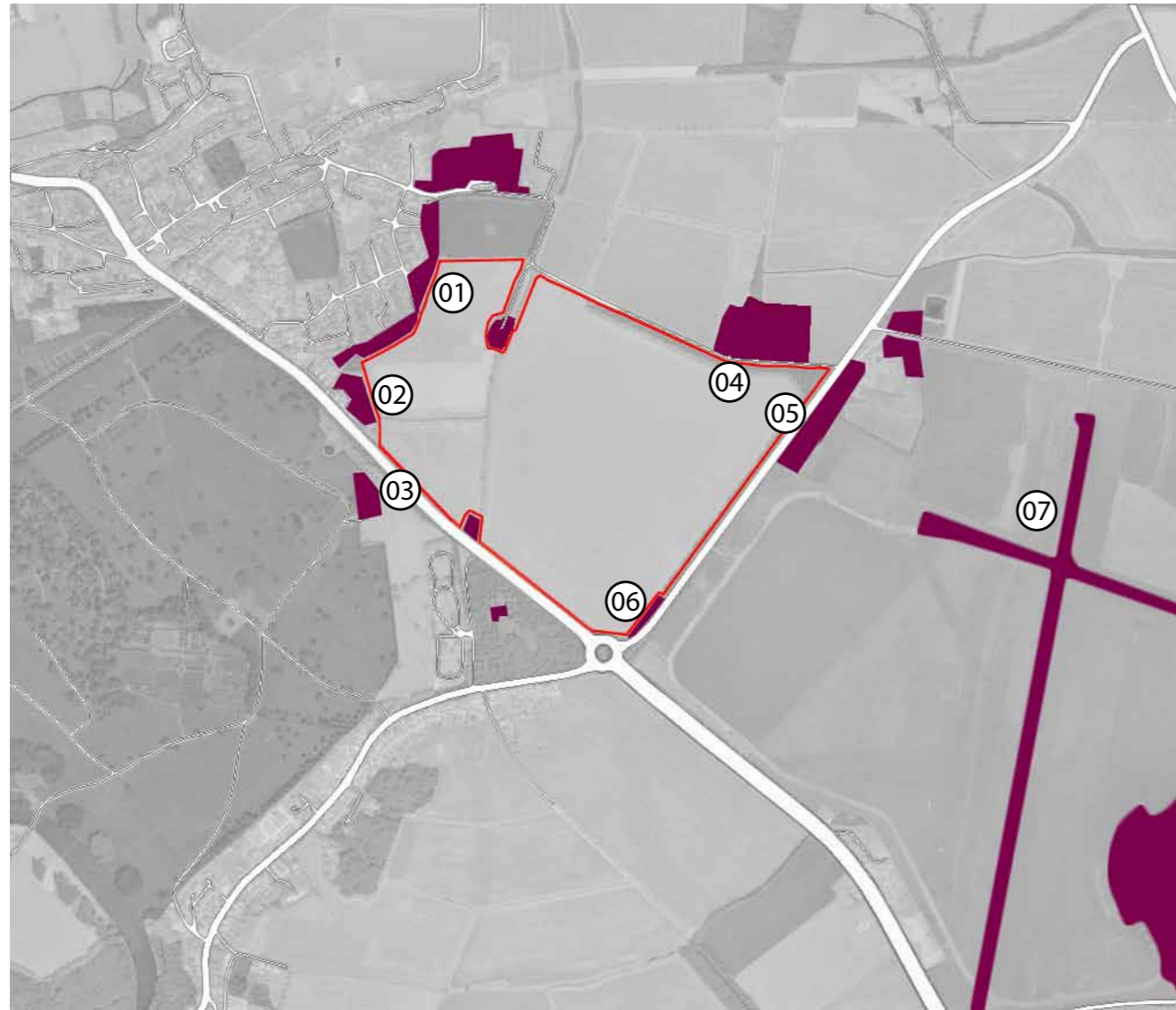


Existing Uses:


- Residential
- Airport
- Educational
- Commercial
- Heritage

Site Usage

Baseline Map - Principal Receptors



Site Surroundings:

 Principal Receptors

01 - Flemings Rd (Residential Homes)



02 - Oxford Rd (Residential Home)



03 - Oxford Rd (A44) (Commercial Property)



04 - Shipton Rd (Perdiswell Farm)



05 - Upper Campsfield Rd (Residential Homes)



06 - Upper Campsfield Rd (Residential Homes)






07 - Oxford Airport



Baseline Map - Surrounding Landscape



Landscape Types:

-  Trees
-  Hedgerows
-  Farmland

Line of Trees on Upper Campsfield Rd



Line of Hedgerows on Shipton Road







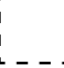
Flat Farmland



Baseline Map - Existing Lighting



Existing Lighting:

-  A44 Street Lighting:
Average Illuminance between 20 Lux and 50 Lux
-  Primary Residential Street Lighting:
Average Illuminance between 15 Lux and 100 Lux
-  Secondary Residential Street Lighting:
Average Illuminance between 5 Lux and 30 Lux
-  Site Boundary:
Average Illuminance on Site between 0 Lux and 0.3 Lux
-  Detail Areas

Glow Plan

Zone A - Existing Lighting

Location 01



Union St - Day



Union St - Night
Pole-mounted High Pressure Sodium Light (at ~ 4.5m)
Illuminance: 25 Lux
Luminous Intensity of Light Source: 500 cd



Union St/ Hensington Rd - Night
High Pressure Sodium Street Light (at ~ 7m)
Illuminance: 70 Lux
Luminous Intensity of Light Source: 1200 cd

Location 02



Woodstock St - Day



Woodstock St - Night
Wall-mounted Flood Lights (at ~ 9m)
Illuminance: 65 Lux
Excessive lighting on pavement



Woodstock St - Night
Light trespass from wall-mounted Flood Lights on neighbouring buildings.

Location 03



Woodstock St/ High St - Day



Woodstock St/ High St - Night
Wall-mounted Flood Lights (at ~ 4.5m)
Illuminance: 100 Lux
Luminous Intensity of Pub sign: 40 cd



Woodstock St/ High St - Night
Wall-mounted Flood Lights (at ~ 7m)
Illuminance: 95 Lux
Illuminance on neighbouring wall: 20 Lux (vertical)

Location 04



Woodstock Rd (A44)/ Blenheim Palace - Day

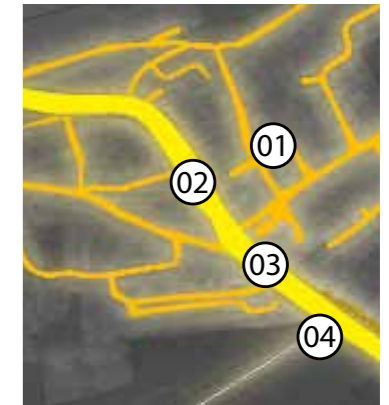


Woodstock Rd (A44) - Night
High Pressure Sodium Street Light (at ~ 10m)
Illuminance: 12 Lux
Luminous Intensity of Light Source: 12000 cd



Blenheim Palace Entrance - Night
Light levels from Street Lights on opposite side of the road.
Illuminance: 6 Lux

Key Plan:



Woodstock Village

Zone B - Existing Lighting

Location 01



Woodstock Rd (Residential) - Day



Woodstock Rd (Residential) - Night
Pole-mounted High Pressure Sodium Light (at ~ 4.5m)
Illuminance: 3 - 30 Lux
Luminous Intensity of Light Source: 12000 cd

Location 02



Cadogan Park - Day



Cadogan Park - Night
Pole-mounted High Pressure Sodium Light (at ~ 4.5m)
Illuminance: 30 Lux
Luminous Intensity of Light Source: 12000 cd

Location 03



Churchill Gate - Day



Churchill Gate - Night
Pole-mounted High Pressure Sodium Light (at ~ 4.5m)
Illuminance: 20 Lux

Location 04



Shipton Rd (Marlborough School) - Day



Shipton Rd (Marlborough School) - Night
Pole-mounted High Pressure Sodium Light (at ~ 5m)
Illuminance: 12 - 45 Lux
Luminous Intensity of Light Source: 12000 cd



Cadogan Park - Night
Pole-mounted High Pressure Sodium Light (at ~ 4.5m)
Illuminance: 28 Lux

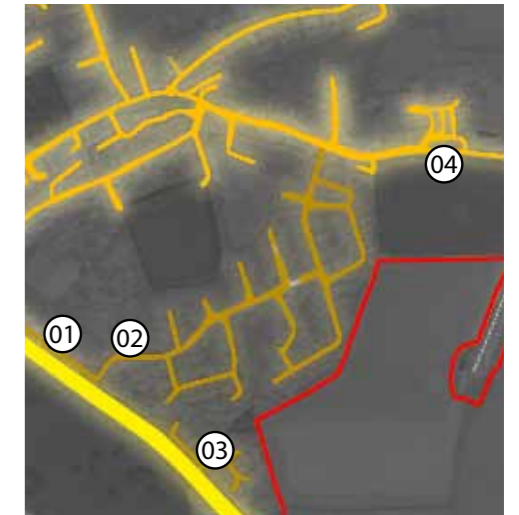


Woodstock Rd (A44)/ Churchill Gate - Night
High Pressure Sodium Street Light (at ~ 10m)
Illuminance: 20 Lux
Luminous Intensity of Light Source: 750 cd



Shipton Rd (Street Sign) - Night
Street Sign Illumination
Luminous Intensity of street sign: 6 cd

Key Plan:



Adjacent Residential Area

Zone C - Existing Lighting

Location 01



On Site (Woodstock Rd Entrance) - Day



On Site (Woodstock Rd Entrance) - Night
High Pressure Sodium Street Light (at ~ 10m)
Illuminance: 0.3 Lux (On site at almost full moon)
Luminous Intensity of Light Source: 750 cd



Woodstock Rd (A44) - Night
High Pressure Sodium Street Light (at ~ 10m)
Illuminance: 20 Lux

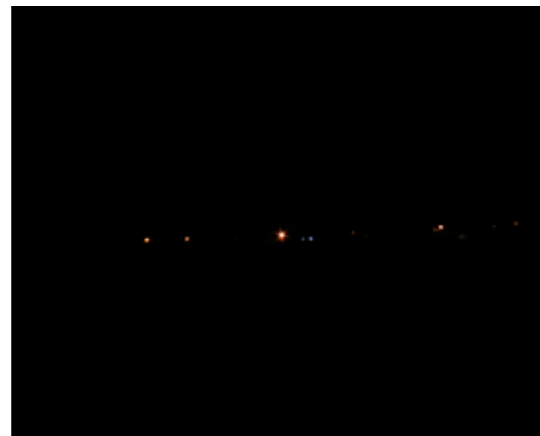
Location 02



On Site (Shipton Rd) - Day



On Site (Shipton Rd) - Night
No existing lighting on existing site area. Only street lighting to be seen.
Illuminance: 0.01 Lux (On site)



On Site (Shipton Rd) - Night
No existing lighting on existing site area. Only street lighting to be seen.

Location 03



Upper Campsfield Rd (View on Airport) - Day



Upper Campsfield Rd (View on Airport) - Night
Airport security lighting
Illuminance: 2 Lux (On gateway)
Luminous Intensity: 12 cd (Airport Flood Lights)



Upper Campsfield Rd (View on Airport) - Night
Airport security lighting
Illuminance: 25 Lux (On Upper Campsfield Rd)

Location 04



Roundabout (View on Site) - Day



Roundabout (View South) - Day
High Pressure Sodium Street Light (at ~ 10m)
Illuminance: 30 Lux (At night)



Roundabout (View on Grove Road) - Day
Pole-mounted High Pressure Sodium Light (at ~ 4.5m) on Grove Road.

Key Plan:



Main Road + Site Boundary

GIA Equation

GIA Equation Lighting Design Limited
A Registered Company in England and Wales. Company Registration No. 02066155
17 Risborough Street | London SE1 0HG
T: +44 20 3772 2762 | E: info@giaequation.co.uk

CONFIDENTIAL INFORMATION

This document is made available to the recipient on the express understanding that the information contained in it be regarded and treated by the recipient as strictly confidential. The contents of this document is intended only for the sole use of the recipient and should not be disclosed or furnished to any other person.

DISCLAIMER OF LIABILITY

The information contained in this document is provided for the sole use of the recipient and no reliance should be placed on the information by any other person. In the event that the information is disclosed or furnished to any other person, the GIA Equation accepts no liability for any loss or damage incurred by that person whatsoever as a result of using the information.

COPYRIGHT ©

All rights reserved. No part of the content of this document may be reproduced, published, transmitted or adapted in any form or by any means without the written permission of the GIA Equation.

QA SYSTEM

Revision No: P3
Revision Date: 21st November 2014
Reason for Issue: For Inclusion in the Hybrid Planning Application
Filename: 2720_Lighting Impact Assessment
Client Name: Pye Homes and Vanbrugh Unit Trust (acting on behalf of Blenheim Estates)
Authorisation By: Keith Miller
Verification By: Kevin Theobald
Project Coordinator: Johannes Stahl