

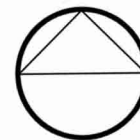
APPENDIX 10.1

ASPECT PLANS



NOTES:
Based upon the Ordnance Survey map with permission of The Controller of Her Majesty's Stationery Office, © Crown Copyright.
Aspect Landscape Planning Ltd, West Court, Hardwick Business Park, Noral Way, Banbury OX16 2AF.
Licence 100045345 Aerial map data © 2012 Google

Copyright reserved
No Dimensions to be scaled from this drawing.



Key:



Site Boundary

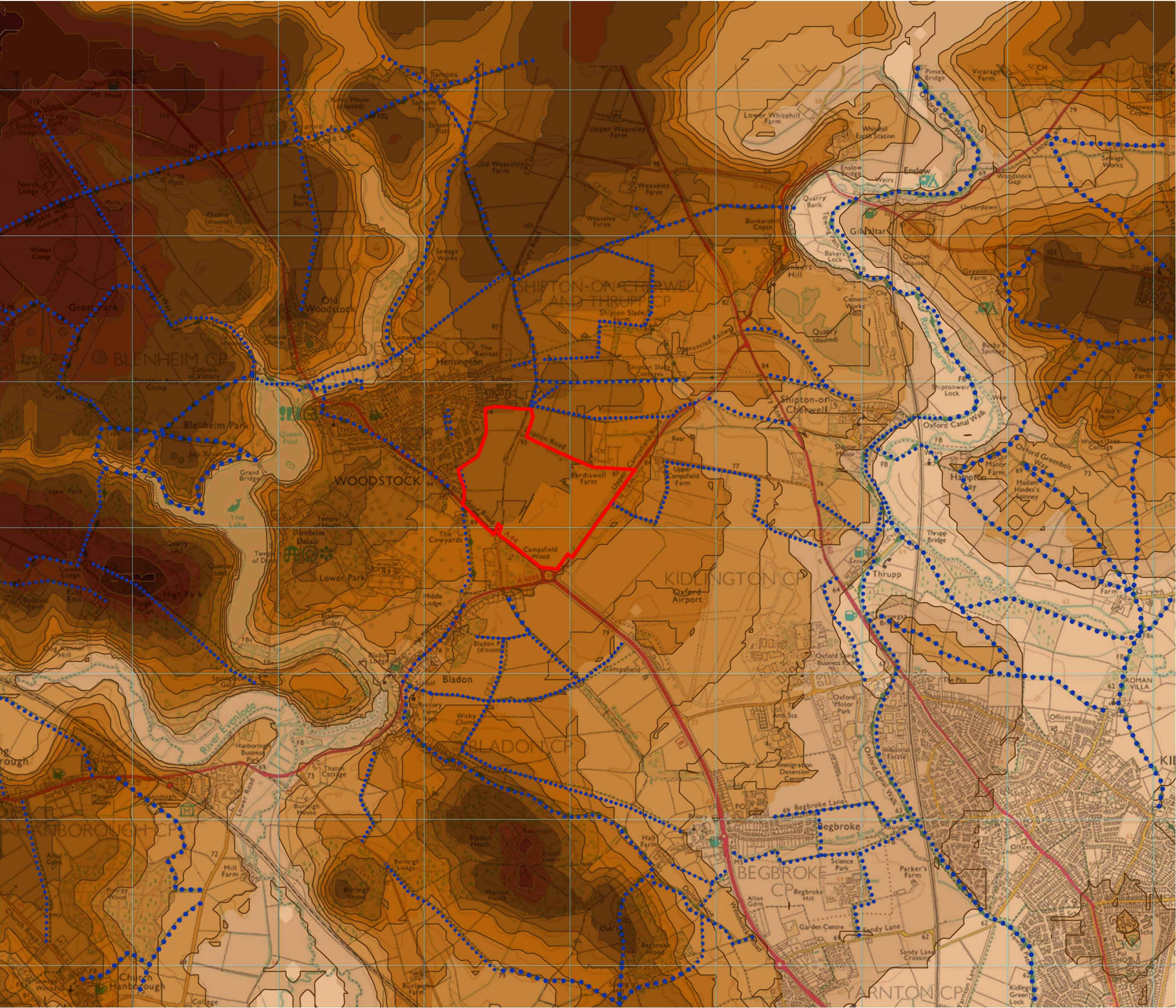
REV	DATE	NOTE	DRAWN	CHK'D
REVISIONS				

aspect landscape planning

TITLE
**Blenheim Estates, Woodstock
Location Plan**

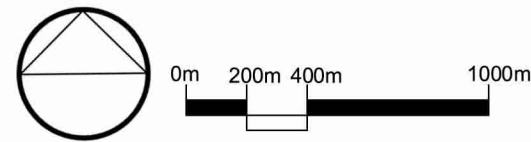
CLIENT
Pye Homes

SCALE Not to Scale	DATE OCT 2014	DRAWN JM
DRAWING NUMBER 5510/ ASP1	REVISION	



NOTES:
Based upon the Ordnance Survey map with permission of The Controller of Her Majesty's Stationery Office, © Crown Copyright.
Aspect Landscape Planning Ltd, West Court, Hardwick Business Park, Noral Way, Banbury OX16 2AF.
Licence 100045345
Aerial map data © 2012 Google

Copyright reserved
No Dimensions to be scaled from this drawing.

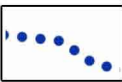
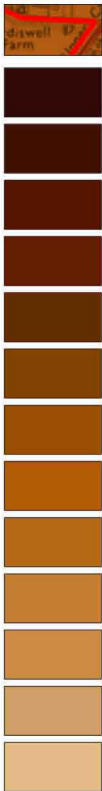


KEY:

Site Boundary

Height Ranges

120
115
110
105
100
95
90
85
80
75
70
65
(M A.O.D)



Public Rights Of Way

REV	DATE	NOTE	DRAWN	CHK'D
REVISIONS				

aspect landscape planning

TITLE
Blenheim Estates, Woodstock
Landscape Analysis_ Topographic

CLIENT
Pye Homes

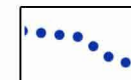
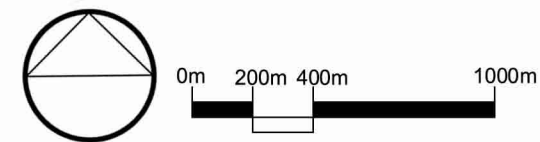
SCALE 1:25000@A3	DATE OCT 2014	DRAWN SB
DRAWING NUMBER 5510/ ASP2	REVISION	



NOTES:
Based upon the Ordnance Survey map with permission of The Controller of Her Majesty's Stationery Office, © Crown Copyright.
Aspect Landscape Planning Ltd, West Court, Hardwick Business Park, Noral Way, Banbury OX16 2AF.
Licence 100045345
Aerial map data © 2012 Google

Copyright reserved

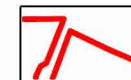
No Dimensions to be scaled from this drawing.



Public Rights Of Way



Key Vegetation



Site Boundary

REV	DATE	NOTE	DRAWN	CHK'D
REVISIONS				

aspect landscape planning

TITLE
Blenheim Estates, Woodstock
Landscape Analysis with
Key Vegetation

CLIENT

Pye Homes

SCALE 1:25000@A3	DATE OCT 2014	DRAWN JM
DRAWING NUMBER 5510/ ASP3	REVISION	



Key:

 Site Boundary



NOTES:
Based upon the Ordnance Survey map with permission of The Controller of Her Majesty's Stationery Office. © Crown Copyright.
Aspect Landscape Planning Ltd, West Court, Hardwick Business Park, Noral Way, Banbury OX16 2AF.
Licence 100045345
Copyright reserved
No Dimensions to be scaled from this drawing.

REV	DATE	NOTE	DRAWN	CHK'D
REVISIONS				



TITLE
**Blenheim Estates, Woodstock
Landscape Character**

CLIENT
Pye Homes

SCALE Not to Scale	DATE OCT 2014	DRAWN SB	CHK'D AM
DRAWING NUMBER 5510/ ASP4		REVISION	



NOTES:
Based upon the Ordnance Survey map with permission of The Controller of Her Majesty's Stationary Office. © Crown Copyright.
Aspect Landscape Planning Ltd, West Court, Hardwick Business Park, Noral Way, Banbury OX16 2AF.
Licence 100045345
Copyright reserved
No Dimensions to be scaled from this drawing.

1:5000 @ A3

0m 50m 100m 200m

- Key:
- Site Boundary
 - Existing Trees & Hedgerows
 - Proposed Wild Meadow
 - Proposed Trees
 - Scheduled Ancient Monument
 - Mown Grass Paths
 - Combined Cycle & Footpaths
 - Proposed Woodland Planting
 - Bat Corridor
 - Potential location for focal points or public art
 - Play Spaces
 - Allotments
 - Paths

Bat Corridor:
New mixed species hedgerow & tree planting offset from existing vegetation provides a clear central avenue for bat movement and feeding.

Landscaped attenuation basin allows for sustainable drainage of the site

Mown footpaths flow through the central meadows & Ancient Monument helping to link the central open space

Combined cycle & footpath network provides a central spine through the site & promotes sustainable movement

New planting provides direction & structure throughout the site

Woodland playspace set within broad landscape buffer which will soften the edge of the proposed development and enhance the approaches to Woodstock from the south east. The landscape buffer will reflect the existing landscape context associated with the edge of the Blenheim Estate.

REV	DATE	NOTE	DRAWN	CHK'D
REVISIONS				

aspect landscape planning

TITLE
Land East of Woodstock
Outline Landscape Masterplan

CLIENT
Pye Homes

SCALE	DATE	DRAWN	CHK'D
1:5000 @ A3	OCT 2014	JM	RF
DRAWING NUMBER	REVISION		
5510 / ASP5	B		

A - Landscape Buffer

- Naturalised character.
- Native tree species with native shrub planting to form understorey.

B - Central Square

- Formalised open public realm.
- Largely hard surfaced with some planting to the perimeters.
- Suggested species: Liquidambar styraciflua

C - Phase 1 Link Road

- Landscaped urban approach creating a two-sided street with formal tree planting.
- Broad grass verges with naturalised swales.
- Trees form distinct features within the streetscene.
- Suggested species include Carpinus betulus or Acer platanoides.

D - Phase 1 A44 Frontage

- Continuous landscaped belt incorporating naturalised character.
- Native woodland species incorporated to reflect existing woodland to the south west.

E - Naturalised Wildlife Corridor

- Broad avenue comprising existing retained hedgerow and new native planting.
- Native planting will compromise a mix of tree and shrub species to create a dense landscape buffer.

F- Northern Boundary Woodland

- Extension to existing woodland edge to create a robust buffer between the proposals and landscape to the north.
- Native woodland species.

G- Football Club Buffer

- Tree and shrub planting softens edge of the football club development.
- Use of native tree and shrub species ensures a degree of biodiversity enhancement.

H- Lime Avenue

- Formalised double avenue of trees is informed by features within the Blenheim parkland and also forms a backdrop to the SAM.
- Suggested tree species: Tilia cordata; reflecting existing specimens around the site and immediate setting.

I- Linear Park

- Informal open space linking the SAM with common land.
- Native tree and shrub planting break up the space and create visual interest.
- Sweeping footpath draws pedestrians through the space.
- Areas of wildflower grassland create biodiversity interest.

J- Tree lined Primary Road

- Urban streetscene incorporating tree avenue to create visual interest and vertical scale.
- Suggested species: Carpinus betulus ‘Frans Fontaine.’

K- Gateway Planting

- Key trees at transition between urban environment and open space.
- Suggested species: Fagus sylvatica ‘Purpurea’ or Liriodendron tulipifera.

L- Urban Edge

- Formal tree avenue creates a transition between the setting of the SAM and the proposed built environment. The formalised planting reflects some of the features within Blenheim Estate.
- Suggested Species: Tilia cordata; Platanus x hispanica.

M- Urban Green Squares

- Formal open spaces provide amenity space within the built up area. The spaces will incorporate a mix of soft and hard public realm to provide a variety of experiences, including opportunities for formal and informal play..
- The planting can contribute to the character of these areas including species to create sensory spaces.
- Suggested Species: Liquidambar; Lavendar etc.

R- Sensory Gardens

- Creation of formal gardens within the setting of the care facility enhances visual amenity as well as providing a range of experiences for residents. The use of water, various surface treatments and planting will provide a range of sensory experiences.
- Suggested species: Lavendar, various edible herb species, reeds and grasses.

N- Upper Campsfield Road Gateway

- Extend existing woodland buffer to ensure a robust green edge is maintained.
- Use of certain tree species can highlight the gateway through foliage or form.
- Suggested Species: Fagus sylvatica ‘Purpurea’; Quercus ilex.

O- A44 Frontage

- Native woodland reflective of tree belt on a south eastern boundary and woodland to the south west.
- Informal pedestrian routes through this space will create recreation opportunities and provide pedestrian links to the bus stops on the A44
- The planting creates a robust green edge to the development, enhancing the approaches.

P- SAM Open Space

- Informal open space comprising extensive area of native wildflower grassland forming a localised nature reserve.
- A formalised perimeter footpath creates a circuitous route for locals. Seasonal mown paths allow access across the space.
- Suggested palette of ‘Emorsgate’ grassland species:
EW1: Woodland / EH1 Hedgerow & EM2F General Grassland Conservation Mix.

Q- Land east of Shipton Road

- Creation of naturalised setting for the proposed coach parking
- The proposed woodland planting creates a robust green corridor between the site and the landscape to the north



Woodland / Meadow Planting



Informal Recreation



Wildflower Meadow



Liquidambar styraciflua



Hornbeam Avenue

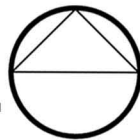
NOTES:
Based upon the Ordnance Survey map with permission of The Controller of Her Majesty's Stationery Office, © Crown Copyright.
Aspect Landscape Planning Ltd, West Court, Hardwick Business Park, Noral Way, Banbury OX16 2AF.
Licence 100045345

Copyright reserved

No Dimensions to be scaled from this drawing.

1:5000 @ A3

0m 50m 100m 200m



Indicative Planting Palettes

NATIVE TREE PLANTING

Acer campestre
Alnus glutinosa
Betula pendula
Fagus sylvatica
Malus sylvestris
Prunus avium
Quercus robur
Salix alba
Sorbus aria
Sorbus aucuparia

NATIVE SHRUB MIX

Cornus sanguinea
Corylus avellana
Crataegus monogyna
Ilex aquifolium
Ligustrum vulgare
Prunus spinosa
Rosa canina
Sambucus nigra
Viburnum lantana

NATIVE WILDFLOWER MIX

Achillea millefolium
Centaurea nigra
Daucus carota
Galium verum
Knautia arvensis
Leucanthemum vulgare
Lotus corniculatus
Plantago lanceolata
Primula veris
Prunella vulgaris
Ranunculus acris
Rhinanthus minor
Rumex acetosa
Trifolium pratense

REV	DATE	NOTE	DRAWN	CHK'D

aspect landscape planning
TITLE

Land East of Woodstock
Landscape Strategy

CLIENT

Pye Homes

SCALE	DATE	DRAWN	CHK'D
1:5000 @ A3	DEC 2014	JM	AM
DRAWING NUMBER	REVISION		
5510_ASP 6	B		