



Viewpoint 20 - Summer



Viewpoint 20 - Winter



**Viewpoint 21 - Summer**



**Viewpoint 21 - Winter**

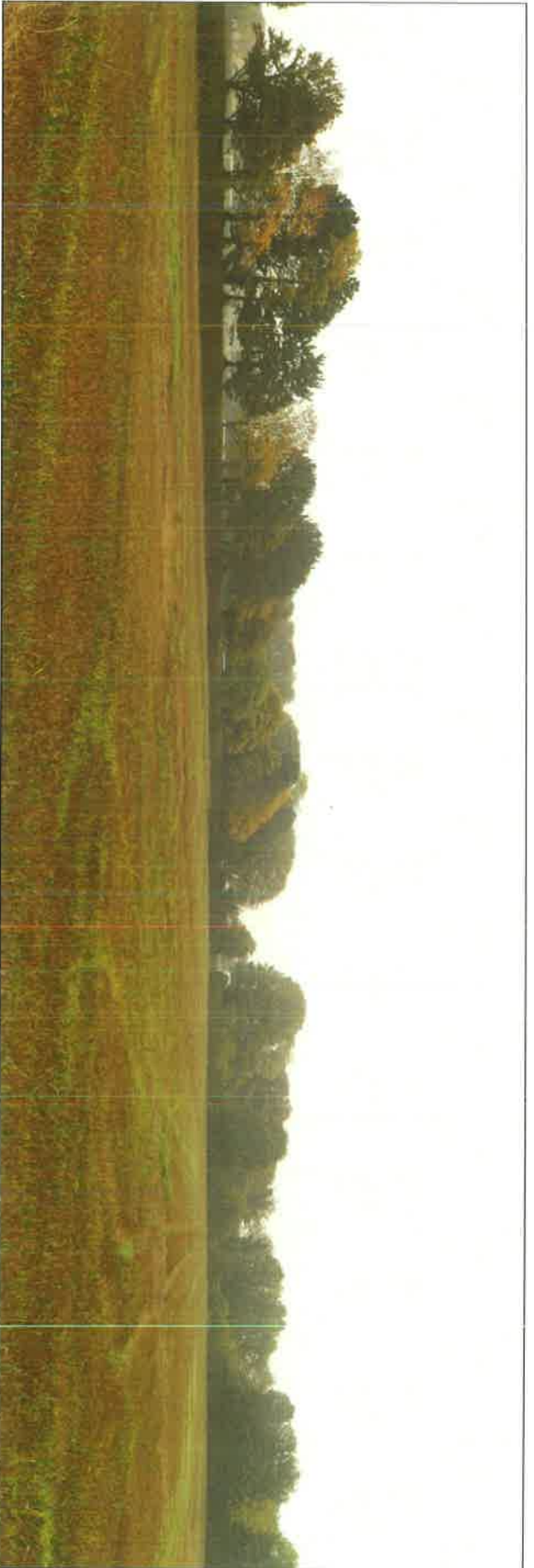


Viewpoint 22 - Summer



Viewpoint 22 - Winter

N.B. IMAGES TO ILLUSTRATE THE EXISTING LANDSCAPE CONTEXT ONLY. Panoramas are created from multiple photographs taken using a digital equivalent of a 35mm camera with 50mm lens in line with best practice and current guidance. Images illustrate a horizontal field of view of 90° and were printed at A3 should be viewed at a distance of 330mm (unless noted) in order to correctly illustrate the existing landscape context. To ensure considered judgements are accurately assessed, images should not be substituted for visiting the viewpoint.



**Viewpoint 23 - Summer**



**Viewpoint 23 - Winter**

**N.B. IMAGES TO ILLUSTRATE THE EXISTING LANDSCAPE CONTEXT ONLY.** Panoramas are created from multiple photographs taken using a 360-degree camera. Images are taken from a fixed camera with some lens in line with best practice and current guidance. Images illustrate a horizontal field of view of 180 degrees. All images are taken from the same radius in order to correctly illustrate the existing landscape context. To ensure considered judgments and accuracy assessed, images should not be substituted for visiting the viewpoint.



Viewpoint 24 - Summer



Viewpoint 24 - Winter



**Viewpoint 25 - Summer**



**Viewpoint 25 - Winter**

**N.B. IMAGES TO ILLUSTRATE THE EXISTING LANDSCAPE CONTEXT ONLY:** Panoramas are created from multiple photographs taken using a combination of a 35mm camera with 50mm lens in the win, best practice and current guidance. Images illustrate a horizontal field of view of the site and surrounding context. Images are processed through the same rules in order to correctly illustrate the existing landscape context. To ensure considered judgments are accurately assessed, images should not be substituted for visiting the viewpoint.

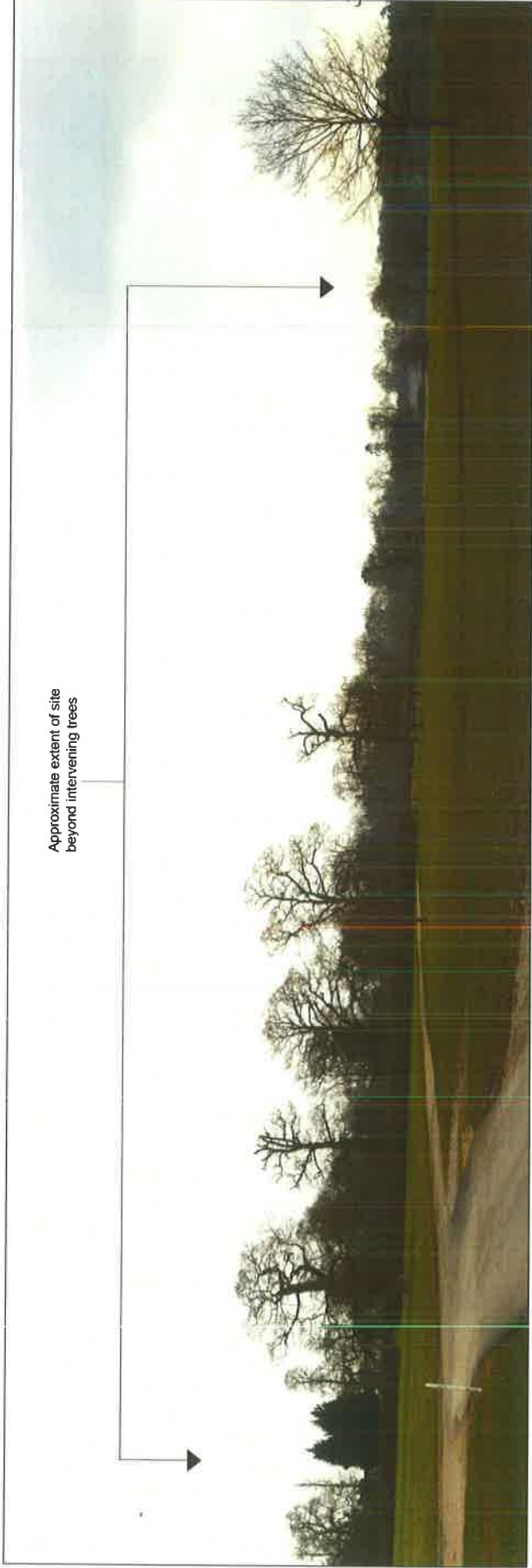


**Viewpoint 26 - Summer**



**Viewpoint 26 - Winter**

**N.B. IMAGES TO ILLUSTRATE THE EXISTING LANDSCAPE CONTEXT ONLY.** Panoramas are created from multiple photographs, taken using a digital equivalent of a 35mm camera with 50mm lens in line with best practice and current guidance. Images illustrate a horizontal field of view of 60° and when printed at A3 should be viewed at a distance of 330mm (curved through the same radius in order to correctly illustrate the existing landscape context). To ensure considered judgements are accurately assessed, images should not be substituted for visiting the viewpoint.



Viewpoint C



Viewpoint D

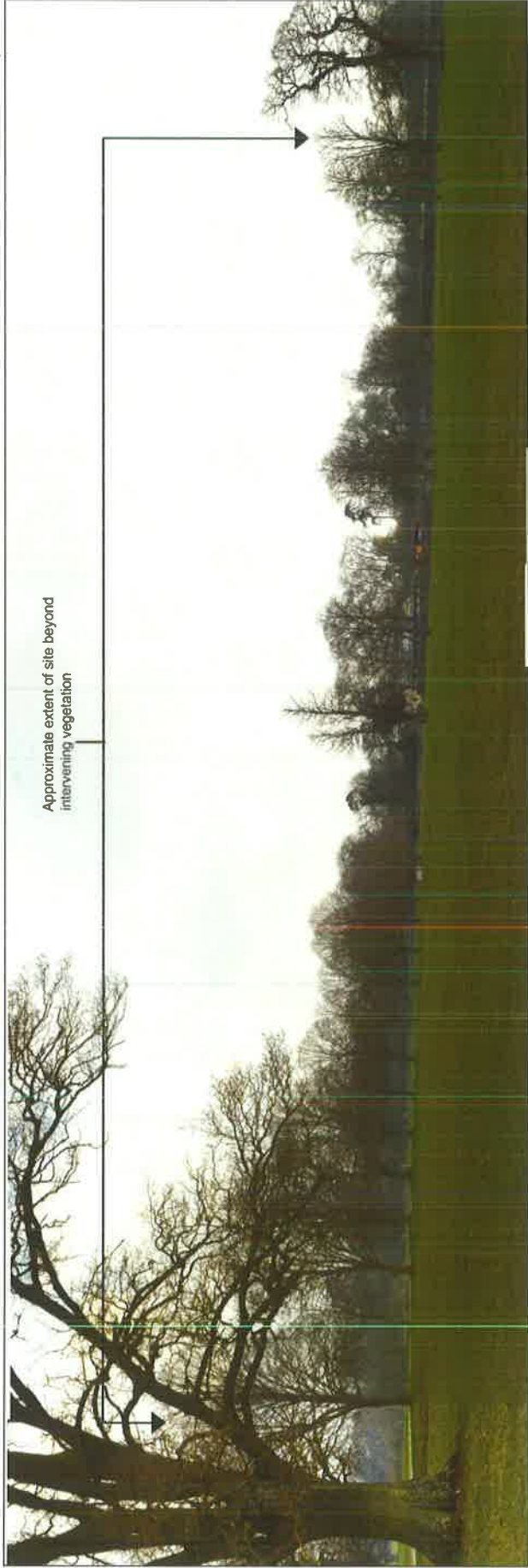
N.B. IMAGES TO ILLUSTRATE THE EXISTING LANDSCAPE CONTEXT ONLY. Panoramas are created from multiple photographs taken using a digital equivalent of a 35mm camera with 50mm lens in line with best practice and current guidance. Images illustrate a horizontal field of view of 68° and when printed at A3 should be viewed at a distance of 330mm curved through the same radius in order to correctly illustrate the existing landscape context. To ensure considered judgements are accurately assessed, images should not be substituted for visiting the viewpoint.







Viewpoint G

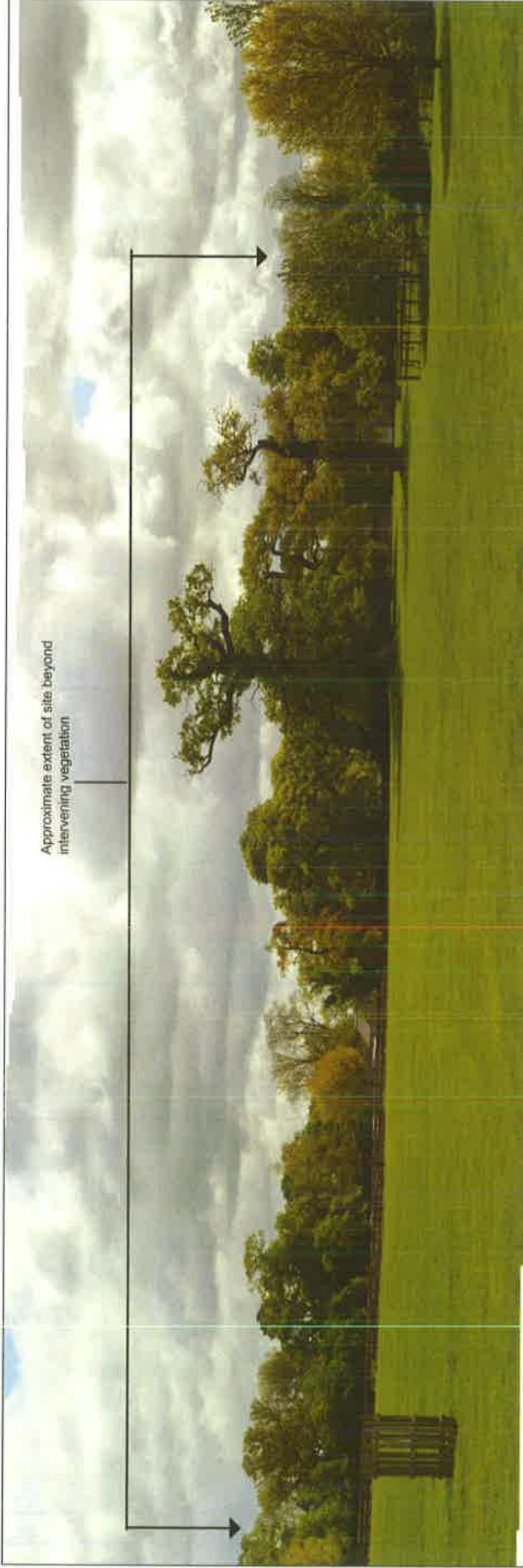


Viewpoint H

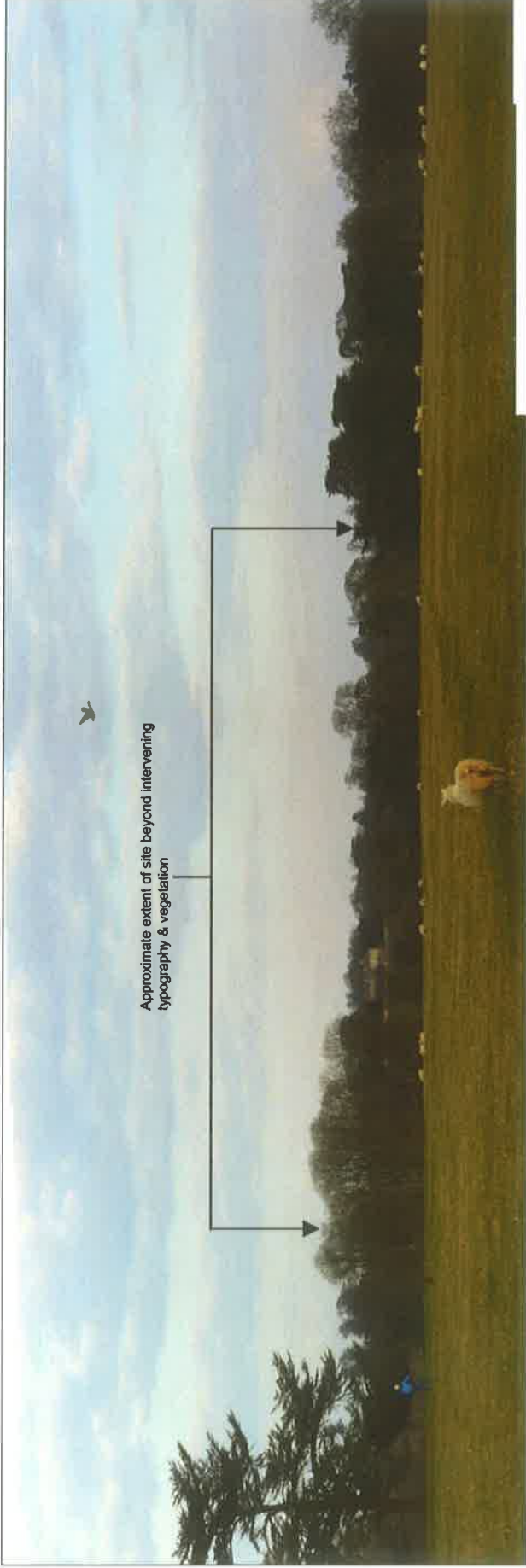
N.B. IMAGES TO ILLUSTRATE THE EXISTING LANDSCAPE CONTEXT ONLY. Panoramas are created from multiple photographs taken using a digital equivalent of a 35mm camera with 50mm lens in line with best practice and current guidance. Images illustrate a horizontal field of view of 60° and when printed at A3, should be viewed at a distance of 300mm curved through the same radius in order to correctly illustrate the existing landscape context. To ensure considered judgements are accurately assessed, images should not be substituted for visiting the viewpoint.



**N.B. IMAGES TO ILLUSTRATE THE EXISTING LANDSCAPE CONTEXT ONLY.** Panoramas are created from multiple photographs taken using a digital equivalent of a 35mm camera with 50mm lens in line with best practice and current guidance. Images illustrate a horizontal field of view of 66° and when printed at A3 should be viewed at a distance of 330mm curved through the same radius in order to correctly illustrate the existing landscape context. To ensure considered judgements are accurately assessed, images should not be substituted for visiting the viewpoint.



**Viewpoint L**  
 N.B. IMAGES TO ILLUSTRATE THE EXISTING LANDSCAPE CONTEXT ONLY. Panoramas are created from multiple photographs taken using a digital equivalent of a 35mm camera with 50mm lens in line with best practice and current guidance. Images illustrate a horizontal field of view of 68° and when printed at A3, should be viewed at a distance of 330mm curved through the same radius in order to correctly illustrate the existing landscape context. To ensure considered judgements are accurately assessed, images should not be substituted for visiting the viewpoint.

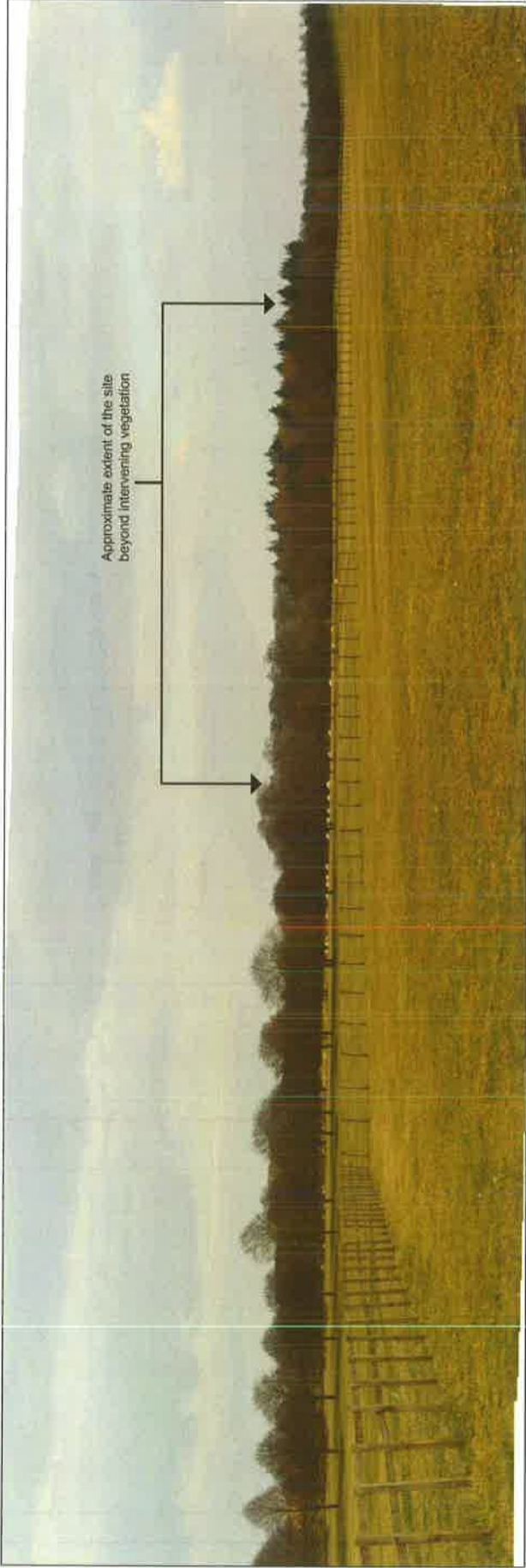


Viewpoint M

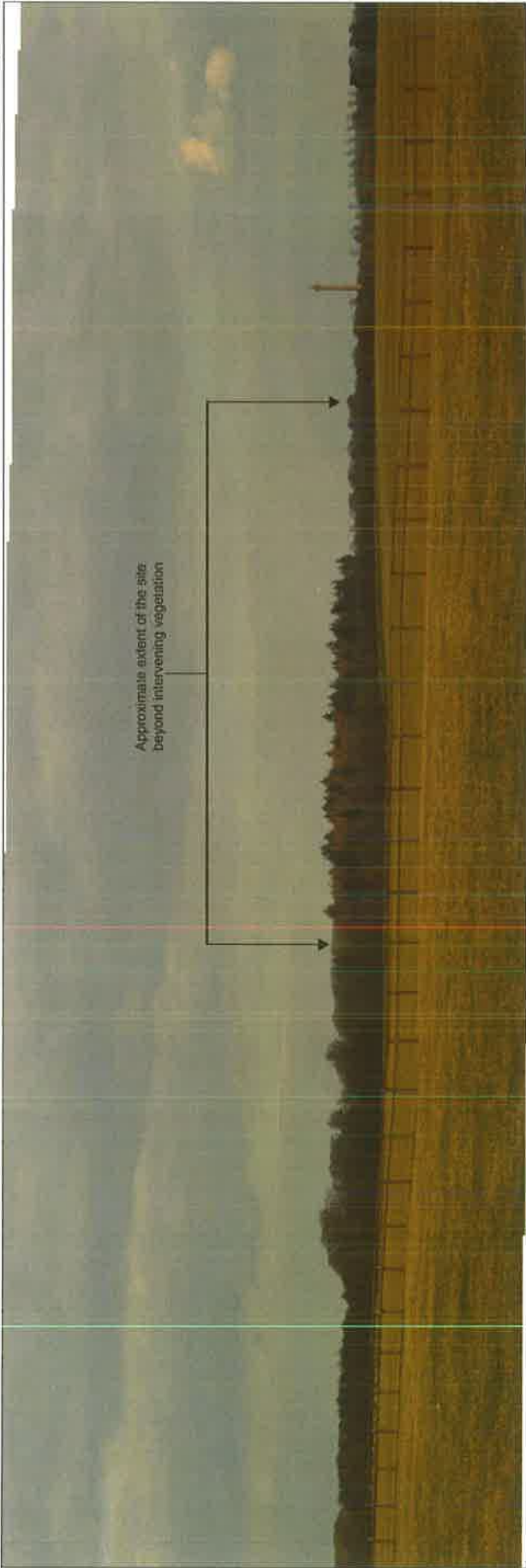


Viewpoint N

N.B. IMAGES TO ILLUSTRATE THE EXISTING LANDSCAPE CONTEXT ONLY. Panoramas are created from multiple photographs taken using a digital equivalent of a 35mm camera with 50mm lens, in line with best practice and current guidance. Images illustrate a horizontal field of view of 60° and when printed at A3, should be viewed at a distance of 330mm curved through the same radius in order to correctly illustrate the existing landscape context. To ensure considered judgements are accurately assisted, images should not be substituted for visiting the viewpoint.

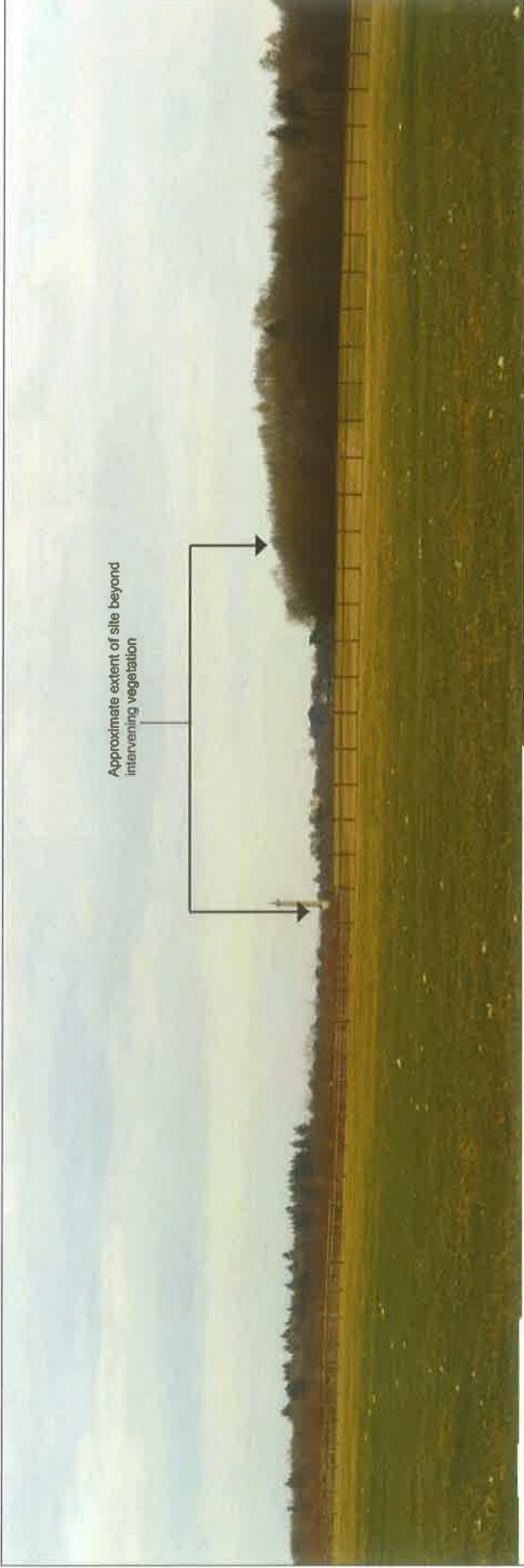


Viewpoint O

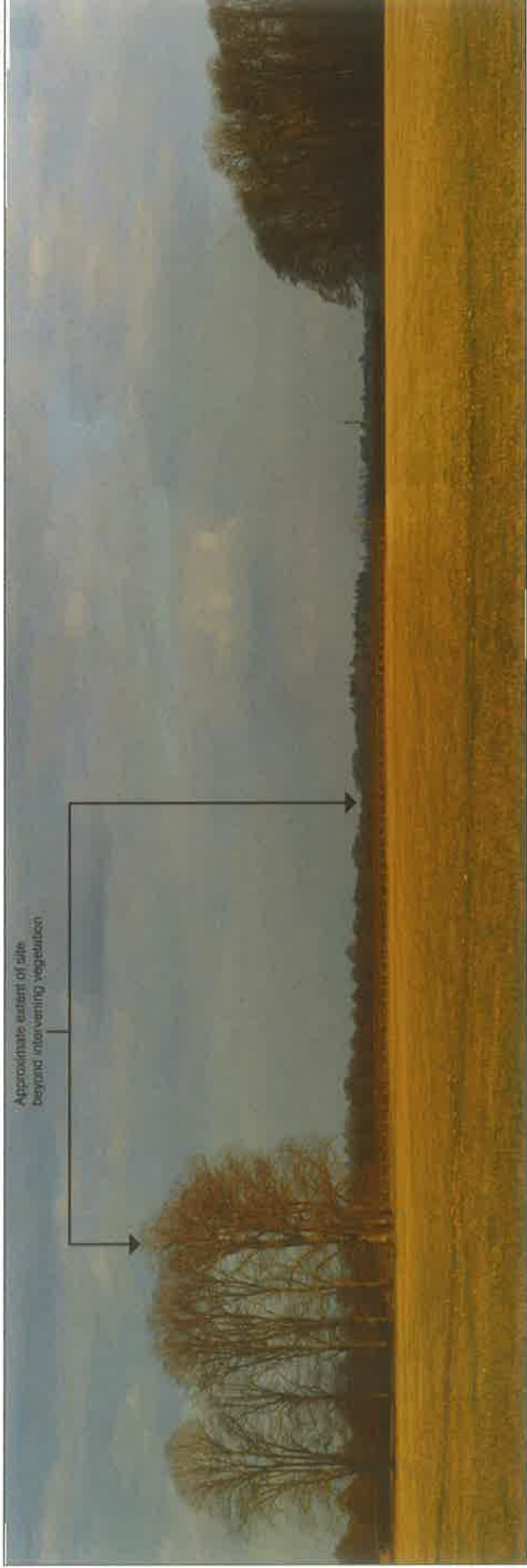


Viewpoint P

N.B. IMAGES TO ILLUSTRATE THE EXISTING LANDSCAPE CONTEXT ONLY. Panoramas are created from multiple photographs taken using a digital equivalent of a 35mm camera with 50mm lens in line with best practice and current guidance. Images illustrate a horizontal field of view of 68° and when printed at A3 should be viewed at a distance of 330mm curved through the same radius in order to correctly illustrate the existing landscape context. To ensure considered judgements are accurately assessed, images should not be substituted for visiting the viewpoint.

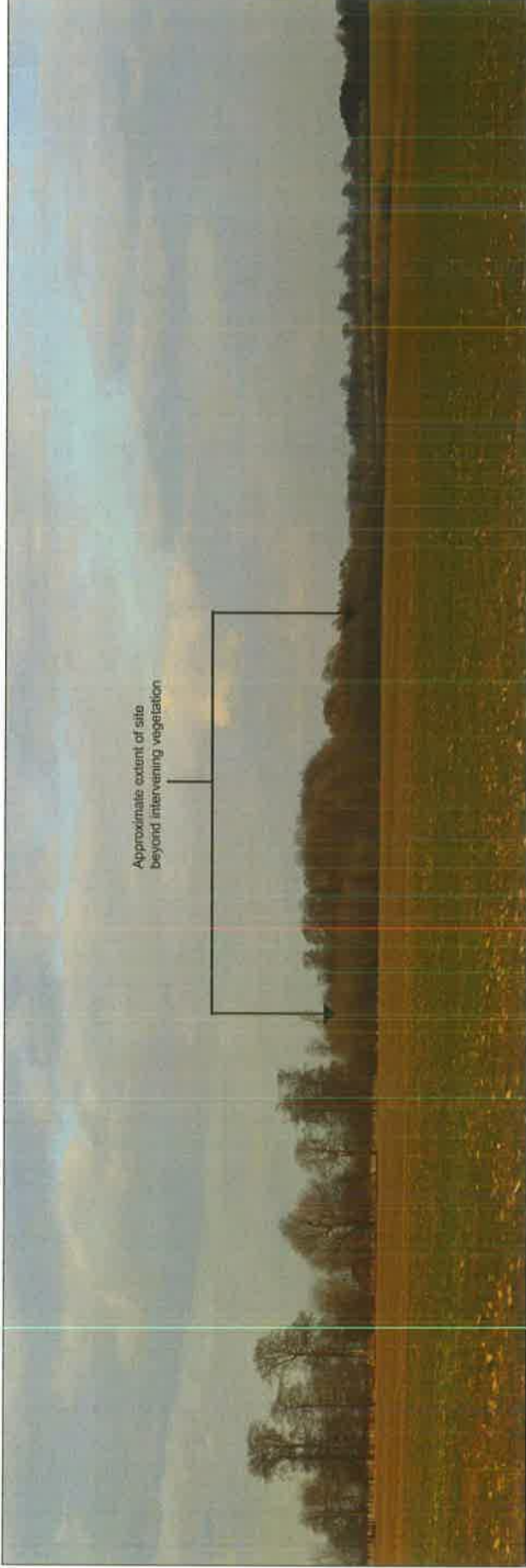


Viewpoint Q



Viewpoint R

N.B. IMAGES TO ILLUSTRATE THE EXISTING LANDSCAPE CONTEXT ONLY. Panoramas are created from multiple photographs taken using a digital equivalent of a 35mm camera with 50mm lens in line with best practice and current guidance. Images illustrate a horizontal field of view of 66° and when printed at A3 should be viewed at a distance of 330mm curved through the same radius. Care should be taken to correctly illustrate the existing landscape context. To ensure considered judgements are accurately assessed, images should not be substituted for visiting the viewpoint.



Approximate extent of site  
beyond intervening vegetation

Viewpoint S



Viewpoint T

N.B. IMAGES TO ILLUSTRATE THE EXISTING LANDSCAPE CONTEXT ONLY. Panoramas are created from multiple photographs taken using a digital equivalent of a 35mm camera with 50mm lens in line with best practice and current guidance. Images illustrate a horizontal field of view of 80° and which should be viewed at a distance of 300mm curved through the same radius in order to correctly illustrate the existing landscape context. To ensure considered judgements are accurately represented, images should not be substituted for visiting the viewpoint.





Viewpoint U



Viewpoint V

N.B. IMAGES TO ILLUSTRATE THE EXISTING LANDSCAPE CONTEXT ONLY. Panoramas are created from multiple photographs taken using a digital equivalent of a 35mm camera with 50mm lens in line with best practice and current guidance. Images illustrate a horizontal field of view of 68° and when printed at A3, should be viewed at a distance of 330mm curved through the same radius in order to correctly illustrate the existing landscape context. To ensure considered judgements are accurately assessed, images should not be substituted for visiting the viewpoint.



Viewpoint W



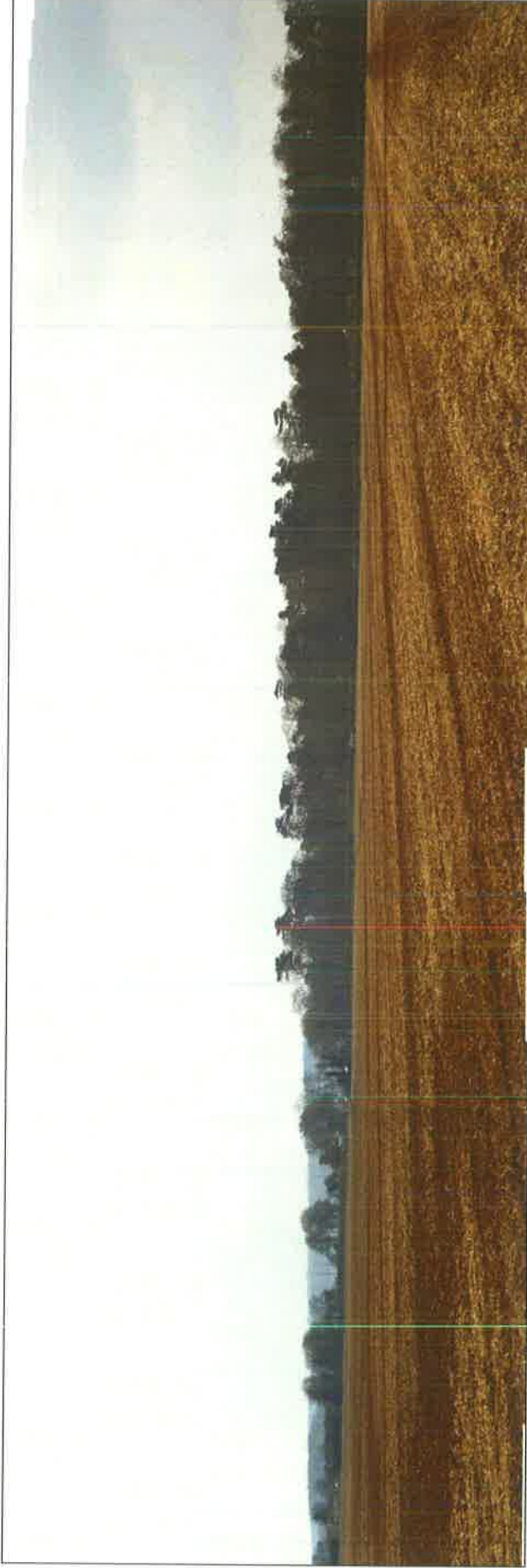
Viewpoint X

N.B. IMAGES TO ILLUSTRATE THE EXISTING LANDSCAPE CONTEXT ONLY. Panoramas are created from multiple photographs taken using a digital equivalent of a 35mm camera with 50mm lens in line with best practice and current guidance. Images illustrate a horizontal field of view of 68° and when printed at A3, should be viewed at a distance of 330mm curved through the same radius in order to correctly illustrate the existing landscape context. To ensure considered judgements are accurately assessed, images should not be substituted for visiting the viewpoint.



Viewpoint Y

N.B. IMAGES TO ILLUSTRATE THE EXISTING LANDSCAPE CONTEXT ONLY. Panoramas are created from multiple photographs taken using a digital equivalent of a 35mm camera with 50mm lens in line with best practice and current guidance. Images illustrate a horizontal view of 68° and when printed at A3 should be viewed at a distance of 300mm curved through the centre of the image to provide the surrounding landscape context. To ensure considered judgements are accurately assessed, images should not be substituted for visiting the viewpoint.



Viewpoint Z



Viewpoint Z











N.B. IMAGES TO ILLUSTRATE THE EXISTING LANDSCAPE CONTEXT ONLY. Panoramas are created from multiple photographs taken using a digital equivalent of a 35mm camera with 50mm lens in line with best practice and current guidance. Images illustrate a horizontal field of view of 68° and when printed at A3, should be viewed at a distance of 330mm curved through the same radius in order to correctly illustrate the existing landscape context. To ensure considered judgements are accurately assessed, images should not be substituted for visiting the viewpoint.



# Appendix E: Phasing Plan

This drawing is the property of Westwaddy ADP and shall not be used for any other purpose without the written permission of Westwaddy ADP. The drawings are prepared for the use of the client and are not to be used for any other purpose without the written permission of Westwaddy ADP. The drawings are prepared for the use of the client and are not to be used for any other purpose without the written permission of Westwaddy ADP.

**DRAFT**

	School (year 2, delivered within 4 years)
	Care Village (years 1-4)
	Supermarket (year 4)
	B Uses (year 2-10)
	Parking (year 3)
	Phase 1-4
	Phase 5-11
	Phase 12-15
	Football Club, sports facilities and strategic landscaping (years 1 and 2)
	Landscaping (years 5-11)

**Woodstock East  
Oxfordshire**

**Phasing Strategy**

Architects and Town Planners  
**westwaddy ADP**  
 11th May 2015  
 Scale: 1:5000@A1  
 Date: 11th May 2015  
 Drawn: RB  
 Checked: HS  
 No: 273  
 Date No: [ ]  
 Rev: [ ]

