



**Environmental Statement Addendum**  
**Chapter 9 Appendices:**  
**Appendix A: Assessment of Effects Upon Additional Viewpoints**  
**Appendix B: WHS Additional Views**  
**Appendix C: Summer/Winter Views**



# Chapter 9

## Appendix A: Assessment of Effects Upon Additional Viewpoints

**Addendum Table 10.1 Assessment of Effects Upon Additional Viewpoints**

<b>Receptor</b>	<b>Location</b>	<b>Predicted impact</b>	<b>Magnitude of Effect – No mitigation</b>	<b>Significance of Effect – No mitigation</b>	<b>Mitigation</b>	<b>Residual Effect</b>
Viewpoint A Very High Sensitivity	First floor room of the palace on the south eastern elevation  (Not publicly accessible)	Introduction of heavy plant and construction elements onto the site. Then introduction of residential built form with associated private open space to the east of Woodstock.  Established vegetation associated with the parkland will contain views.  Direct; Permanent	No Change	<b>None</b>	High quality, appropriate layout that has been informed by detailed site surveys.  Key existing vegetation within the site will be retained and extensive new planting on the south western boundary will further reduce the likelihood of views from the parkland.  The appropriate management of the parkland landscape and proposed landscape buffer by the Blenheim Estate will ensure the long term success of the vegetation cover.	<b>None</b>
Viewpoint B Very High Sensitivity	Car park within Lower Park, to the north east of the Palace	Introduction of heavy plant and construction elements onto the site. Then	Negligible / No Change	<b>Moderate / Minor Neutral</b>	High quality, appropriate layout that has been informed by detailed site surveys.	<b>Minor Neutral (Year 1)</b>

Viewpoint C Very High Sensitivity	Drive within Lower Park which links to The Cow Yard	<p>introduction of residential built form with associated private open space to the east of Woodstock.</p> <p>Established vegetation associated with the parkland will contain views.</p> <p>Direct; Permanent</p>	Negligible / No Change	<b>Moderate / Minor Neutral</b>	<p>Key existing vegetation within the site will be retained and extensive new planting on the south western boundary will further reduce the likelihood of views from the parkland.</p> <p>The appropriate management of the parkland landscape and proposed landscape buffer by the Blenheim Estate will ensure the long term success of the vegetation cover.</p> <p>High quality, appropriate layout that has been informed by detailed site surveys.</p> <p>Key existing vegetation within the site will be retained and extensive new planting on the south western boundary will further reduce the likelihood of views from the parkland.</p> <p>The appropriate management of the parkland landscape and proposed landscape buffer by the Blenheim Estate will ensure the long term success of the vegetation cover.</p>	<b>Negligible to None (Year 10)</b>
Viewpoint D	Drive within Lower Park	<p>Introduction of heavy plant and construction elements onto the site. Then introduction of residential built form with associated private open space to the east of Woodstock.</p> <p>Established vegetation associated with the parkland will contain views.</p> <p>Direct; Permanent</p>	Negligible / No Change	<b>Moderate / Minor Neutral</b>	<p>High quality, appropriate layout that has been informed by detailed site surveys.</p> <p>Key existing vegetation within the site will be retained and extensive new planting on the south western boundary will further reduce the likelihood of views from the parkland.</p> <p>The appropriate management of the parkland landscape and proposed landscape buffer by the Blenheim Estate will ensure the long term success of the vegetation cover.</p> <p>High quality, appropriate layout that has been</p>	<b>Minor Neutral (Year 1)</b>

<p>Very High Sensitivity</p>	<p>which links to The Cow Yard</p>	<p>construction elements onto the site. Then introduction of residential built form with associated private open space to the east of Woodstock. Established vegetation associated with the parkland will contain views. Direct; Permanent</p>	<p></p>	<p></p>	<p>informed by detailed site surveys. Key existing vegetation within the site will be retained and extensive new planting on the south western boundary will further reduce the likelihood of views from the parkland. The appropriate management of the parkland landscape and proposed landscape buffer by the Blenheim Estate will ensure the long term success of the vegetation cover.</p>	<p><b>Negligible to None (Year 10)</b></p>
<p>Viewpoint E Very High Sensitivity</p>	<p>Drive within Lower Park forming the public egress from the Palace</p>	<p>Introduction of heavy plant and construction elements onto the site. Then introduction of residential built form with associated private open space to the east of Woodstock. Established vegetation associated with the parkland will contain views. Direct; Permanent</p>	<p>Negligible / No Change</p>	<p><b>Moderate / Minor Neutral</b></p>	<p>High quality, appropriate layout that has been informed by detailed site surveys. Key existing vegetation within the site will be retained and extensive new planting on the south western boundary will further reduce the likelihood of views from the parkland. The appropriate management of the parkland landscape and proposed landscape buffer by the Blenheim Estate will ensure the long term success of the vegetation</p>	<p><b>Minor Neutral (Year 1)</b>  <b>Negligible to None (Year 10)</b></p>

Viewpoint F Very High Sensitivity	Drive within Lower Park forming the public egress from the Palace	Introduction of heavy plant and construction elements onto the site. Then introduction of residential built form with associated private open space to the east of Woodstock.  Established vegetation associated with the parkland will contain views.  Direct; Permanent	Negligible / No Change	<b>Moderate / Minor Neutral</b>	cover. High quality, appropriate layout that has been informed by detailed site surveys.  Key existing vegetation within the site will be retained and extensive new planting on the south western boundary will further reduce the likelihood of views from the parkland.  The appropriate management of the parkland landscape and proposed landscape buffer by the Blenheim Estate will ensure the long term success of the vegetation cover.	<b>Minor Neutral</b> (Year 1)  <b>Negligible to None</b> (Year 10)
Viewpoint G Very High Sensitivity	Drive within Lower Park forming the public egress from the Palace	Introduction of heavy plant and construction elements onto the site. Then introduction of residential built form with associated private open space to the east of Woodstock.  Established vegetation associated with the parkland will contain views.	Negligible / No Change	<b>Moderate / Minor Neutral</b>	High quality, appropriate layout that has been informed by detailed site surveys.  Key existing vegetation within the site will be retained and extensive new planting on the south western boundary will further reduce the likelihood of views from the parkland.  The appropriate management of the parkland landscape and proposed landscape buffer	<b>Minor Neutral</b> (Year 1)  <b>Negligible to None</b> (Year 10)

Viewpoint H Very High Sensitivity	Drive within Lower Park forming the public egress from the Palace	Direct; Permanent Introduction of heavy plant and construction elements onto the site. Then introduction of residential built form with associated private open space to the east of Woodstock. Established vegetation associated with the parkland will contain views. Direct; Permanent	Negligible / No Change	<b>Moderate / Minor Neutral</b>	by the Blenheim Estate will ensure the long term success of the vegetation cover. High quality, appropriate layout that has been informed by detailed site surveys. Key existing vegetation within the site will be retained and extensive new planting on the south western boundary will further reduce the likelihood of views from the parkland. The appropriate management of the parkland landscape and proposed landscape buffer by the Blenheim Estate will ensure the long term success of the vegetation cover.	<b>Minor Neutral (Year 1)</b>  <b>Negligible to None (Year 10)</b>
Viewpoint I Very High Sensitivity	Drive within Lower Park to the rear of The Cow Yard	Introduction of heavy plant and construction elements onto the site. Then introduction of residential built form with associated private open space to the east of Woodstock. Established vegetation	Negligible	<b>Moderate / Minor Neutral</b>	High quality, appropriate layout that has been informed by detailed site surveys. Key existing vegetation within the site will be retained and extensive new planting on the south western boundary will further reduce the likelihood of views from the parkland. The appropriate	<b>Minor Neutral (Year 1)</b>  <b>Negligible to None (Year 10)</b>





Viewpoint L Very High Sensitivity	Footpath to the south east of the Column of Victory	Established vegetation associated with the parkland will contain views. Direct; Permanent	Negligible / No Change	<b>Moderate / Minor Neutral</b>	of views from the parkland. The appropriate management of the parkland landscape and proposed landscape buffer by the Blenheim Estate will ensure the long term success of the vegetation cover. High quality, appropriate layout that has been informed by detailed site surveys. Key existing vegetation within the site will be retained and extensive new planting on the south western boundary will further reduce the likelihood of views from the parkland. The appropriate management of the parkland landscape and proposed landscape buffer by the Blenheim Estate will ensure the long term success of the vegetation cover.	<b>Minor Neutral (Year 1)</b>  <b>Negligible Neutral (Year 10)</b>
Viewpoint M Very High Sensitivity	Footpath to the south west of the Column of Victory	Introduction of heavy plant and construction elements onto the site. Then introduction of residential built form with associated private open space to the east of Woodstock. Established vegetation associated with the parkland will contain views. Direct; Permanent	Negligible / No Change	<b>Moderate / Minor Neutral</b>	High quality, appropriate layout that has been informed by detailed site surveys. Key existing vegetation within the site will be retained and extensive new	<b>Minor Neutral (Year 1)</b>

			associated private open space to the east of Woodstock.  Established vegetation associated with the parkland will contain views.  Direct; Permanent			planting on the south western boundary will further reduce the likelihood of views from the parkland.  The appropriate management of the parkland landscape and proposed landscape buffer by the Blenheim Estate will ensure the long term success of the vegetation cover.	<b>Negligible Neutral (Year 10)</b>
Viewpoint N  Very High Sensitivity	Footpath within Great Park to the north west of the Column of Victory	Introduction of heavy plant and construction elements onto the site. Then introduction of residential built form with associated private open space to the east of Woodstock.  Established vegetation associated with the parkland will contain views.  Direct; Permanent	No Change	<b>None</b>	High quality, appropriate layout that has been informed by detailed site surveys.  Key existing vegetation within the site will be retained and extensive new planting on the south western boundary will further reduce the likelihood of views from the parkland.  The appropriate management of the parkland landscape and proposed landscape buffer by the Blenheim Estate will ensure the long term success of the vegetation cover.	<b>None</b>	
Viewpoint O  Very High Sensitivity	Footpath within Great Park to the north west of the Column of Victory	Introduction of heavy plant and construction elements onto the site. Then	No Change	<b>None</b>	High quality, appropriate layout that has been informed by detailed site surveys.	<b>None</b>	

		<p>introduction of residential built form with associated private open space to the east of Woodstock.</p> <p>Established vegetation associated with the parkland will contain views.</p> <p>Direct; Permanent</p>			<p>Key existing vegetation within the site will be retained and extensive new planting on the southern western boundary will further reduce the likelihood of views from the parkland.</p> <p>The appropriate management of the parkland landscape and proposed landscape buffer by the Blenheim Estate will ensure the long term success of the vegetation cover.</p>	
<p>Viewpoint P</p> <p>Very High Sensitivity</p>	<p>Footpath within Great Park to the north west of the Column of Victory</p>	<p>Introduction of heavy plant and construction elements onto the site. Then introduction of residential built form with associated private open space to the east of Woodstock.</p> <p>Established vegetation associated with the parkland will contain views.</p> <p>Direct; Permanent</p>	<p>No Change</p>	<p>None</p>	<p>High quality, appropriate layout that has been informed by detailed site surveys.</p> <p>Key existing vegetation within the site will be retained and extensive new planting on the southern western boundary will further reduce the likelihood of views from the parkland.</p> <p>The appropriate management of the parkland landscape and proposed landscape buffer by the Blenheim Estate will ensure the long term success of the vegetation cover.</p>	<p>None</p>
<p>Viewpoint Q</p>	<p>Footpath within Great Park to</p>	<p>Introduction of heavy plant and</p>	<p>No Change</p>	<p>None</p>	<p>High quality, appropriate layout that has been</p>	<p>None</p>

<p>Very High Sensitivity</p>	<p>the north west of the Column of Victory</p>	<p>construction elements onto the site. Then introduction of residential built form with associated private open space to the east of Woodstock. Established vegetation associated with the parkland will contain views. Direct; Permanent</p>			<p>informed by detailed site surveys. Key existing vegetation within the site will be retained and extensive new planting on the south western boundary will further reduce the likelihood of views from the parkland. The appropriate management of the parkland landscape and proposed landscape buffer by the Blenheim Estate will ensure the long term success of the vegetation cover.</p>	
<p>Viewpoint R Very High Sensitivity</p>	<p>Footpath within the Great Park, to the south of North Lodge</p>	<p>Introduction of heavy plant and construction elements onto the site. Then introduction of residential built form with associated private open space to the east of Woodstock. Established vegetation associated with the parkland will contain views. Direct; Permanent</p>	<p>No Change</p>	<p>None</p>	<p>High quality, appropriate layout that has been informed by detailed site surveys. Key existing vegetation within the site will be retained and extensive new planting on the south western boundary will further reduce the likelihood of views from the parkland. The appropriate management of the parkland landscape and proposed landscape buffer by the Blenheim Estate will ensure the long term success of the vegetation</p>	<p>None</p>

Viewpoint S Very High Sensitivity	Footpath within the Great Park to the north east of Furze Platt	Introduction of heavy plant and construction elements onto the site. Then introduction of residential built form with associated private open space to the east of Woodstock.  Established vegetation associated with the parkland will contain views.  Direct; Permanent	No Change	None	cover. High quality, appropriate layout that has been informed by detailed site surveys.  Key existing vegetation within the site will be retained and extensive new planting on the south western boundary will further reduce the likelihood of views from the parkland.  The appropriate management of the parkland landscape and proposed landscape buffer by the Blenheim Estate will ensure the long term success of the vegetation cover.	None
--------------------------------------	---	---	-----------	------	---	------



# Chapter 9

## Appendix B: WHS Additional Views



**KEY:**

- Application Site Boundary
- Extent of Theoretical Visibility of Development
- Development Theoretically Not Visible

Note: The area shown as visible is calculated using the bare earth model taking into account potential screening by existing blocks of vegetation structure shown at 8-15m and existing buildings at a height of 8m.

The height of the proposed buildings range from 8-16m.

- Public Right of Way
- View Point Locations
- Monument View Cone
- World Heritage site



A 11.5.15 Updated to reflect viewpoint K  
 REVISED DATE  
 11.5.15  
 11.5.15  
 11.5.15  
 11.5.15

**aspect** landscape planning

TITLE  
 Blenheim Estates, Woodstock  
 Zone of Theoretical Visibility with Key View Points  
 taken from within and adjacent to the World Heritage Site.

CLIENT  
 Pye Homes

SCALE  
 Not to scale

DATE  
 MAR 2015

DRAWN  
 JM

DRAWING NUMBER  
 55101.ZTV + VP 007

REVISION  
 A



Viewpoint A



Viewpoint B

**N.B. IMAGES TO ILLUSTRATE THE EXISTING LANDSCAPE CONTEXT ONLY.** Panoramas are created from multiple photographs taken using a digital camera with 50mm lens, line with 300x, practice and cut-in guidance. Images illustrate a horizontal field of view of 68° and when printed at A3, should be viewed at a distance of 1.5m. The radius is provided in order to correctly illustrate the existing landscape context. To ensure considered judgments are accurately assessed, images should not be substituted for visiting the viewpoint.



Approximate extent of site  
beyond intervening trees



Viewpoint C

Approximate extent of site  
beyond intervening trees

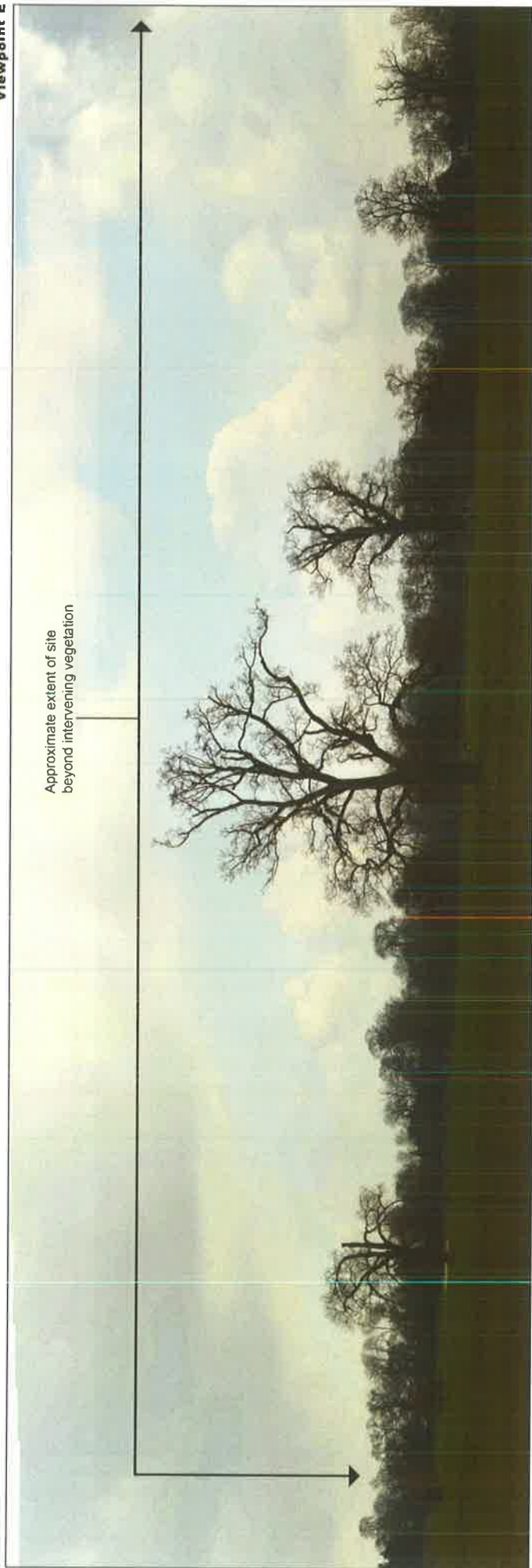


Viewpoint D

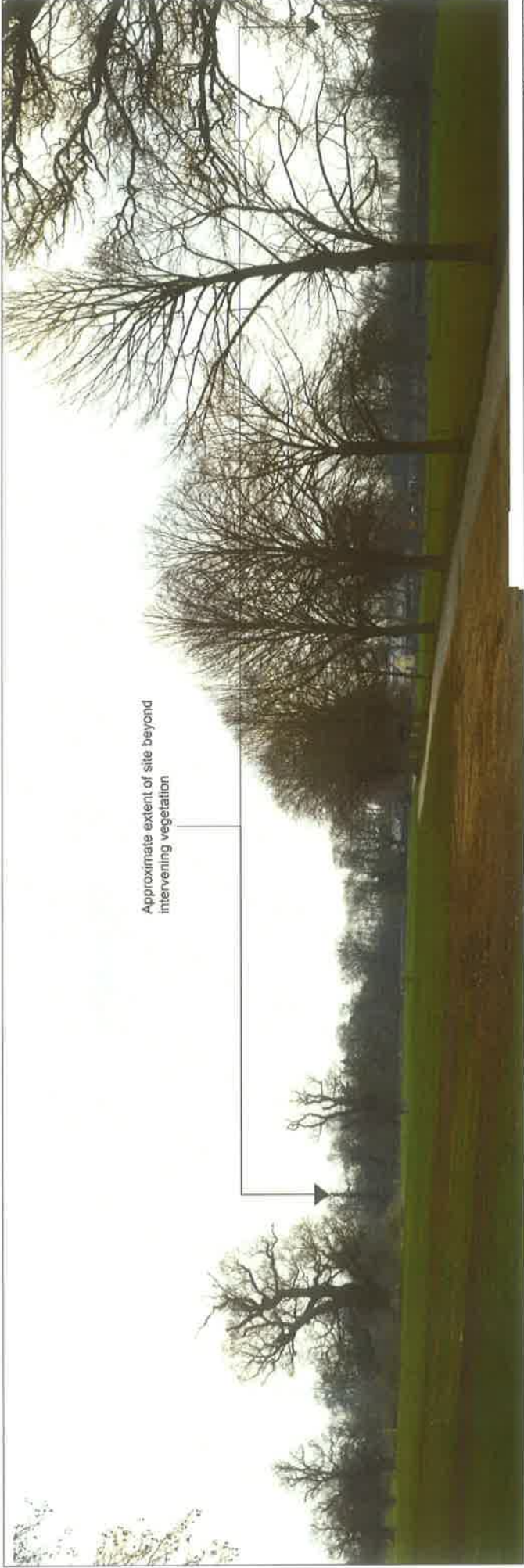
N.B. IMAGES TO ILLUSTRATE THE EXISTING LANDSCAPE CONTEXT ONLY. Panoramas are created from multiple photographs taken using a digital equivalent of a 35mm camera with 50mm lens in line with best practice and current guidance. Images illustrate a horizontal field of view of 68° and when printed at A3, should be viewed at a distance of 330mm curved through the same radius in order to correctly illustrate the existing landscape context. To ensure considered judgements are accurately assessed, images should not be substituted for visiting the viewpoint.



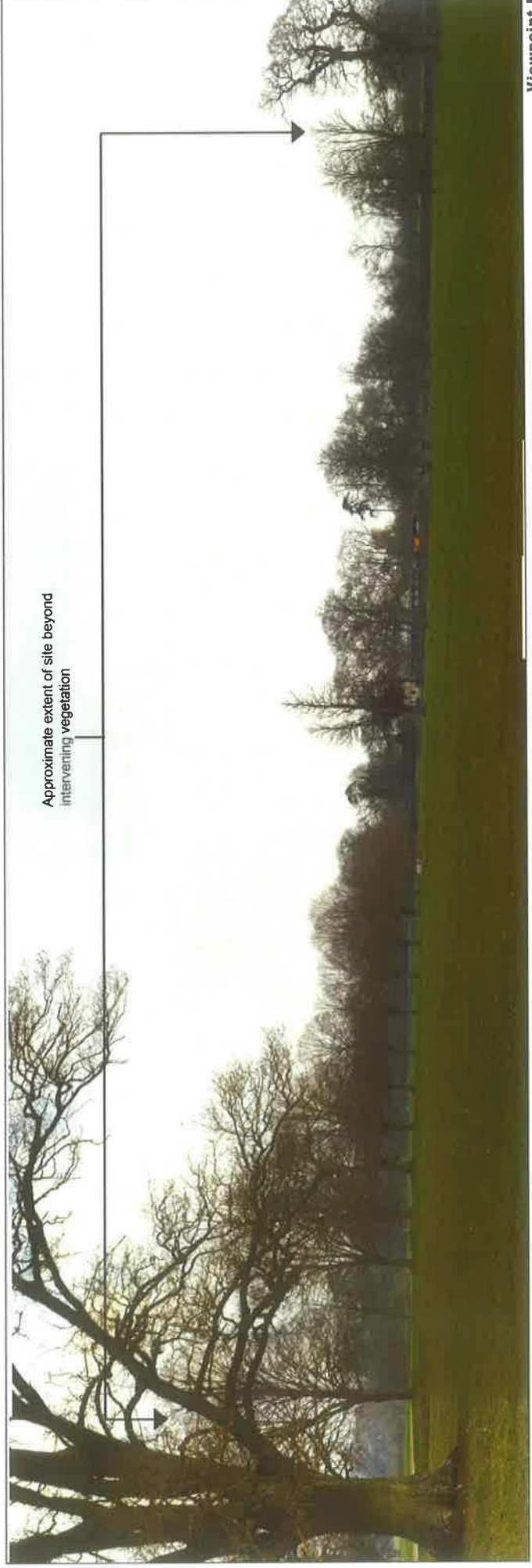
**Viewpoint E**



**Viewpoint F**



Viewpoint G



Viewpoint H

N.B. IMAGES TO ILLUSTRATE THE EXISTING LANDSCAPE CONTEXT ONLY. Panoramas are created from multiple photographs taken using a digital equivalent of a 35mm camera with 50mm lens in line with best practice and current guidance. Images illustrate a horizontal field of view of 65° and when printed at A3, should be viewed at a distance of 330mm curved through the same radius in order to correctly illustrate the existing landscape context. To ensure considered judgements are accurately assessed, images should not be substituted for visiting the viewpoint.



Approximate extent of site beyond intervening vegetation

Viewpoint I



Site extends beyond the view beyond intervening vegetation

Viewpoint J

N.B. IMAGES TO ILLUSTRATE THE EXISTING LANDSCAPE CONTEXT ONLY. Panoramas are created from multiple photographs taken using a digital equivalent of a 35mm camera with 50mm lens in line with best practice and current guidance. Images illustrate a horizontal field of view of 68° and when printed at A3, should be viewed at a distance of 330mm curved through the same radius in order to correctly illustrate the existing landscape context. To ensure considered judgements are accurately assessed, images should not be substituted for visiting the viewpoint.

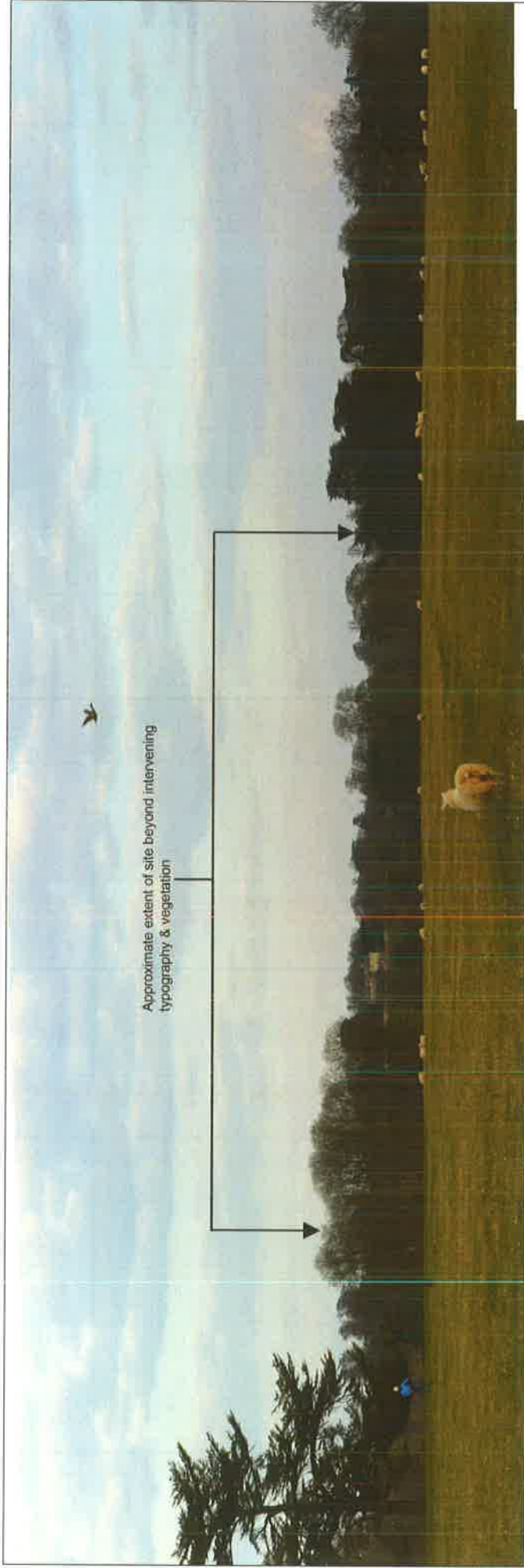


Viewpoint K



Viewpoint L

N.B. IMAGES TO ILLUSTRATE THE EXISTING LANDSCAPE CONTEXT ONLY. Panoramas are created from multiple photographs, taken using a digital equivalent of a 35mm camera with 50mm lens in line with best practice and current guidance. Images illustrate a horizontal field of view of 68° and when printed at A3, should be viewed at a distance of 330mm curved through the same radius in order to correctly illustrate the existing landscape context. To ensure considered judgements are accurately assessed, images should not be substituted for visiting the viewpoint.

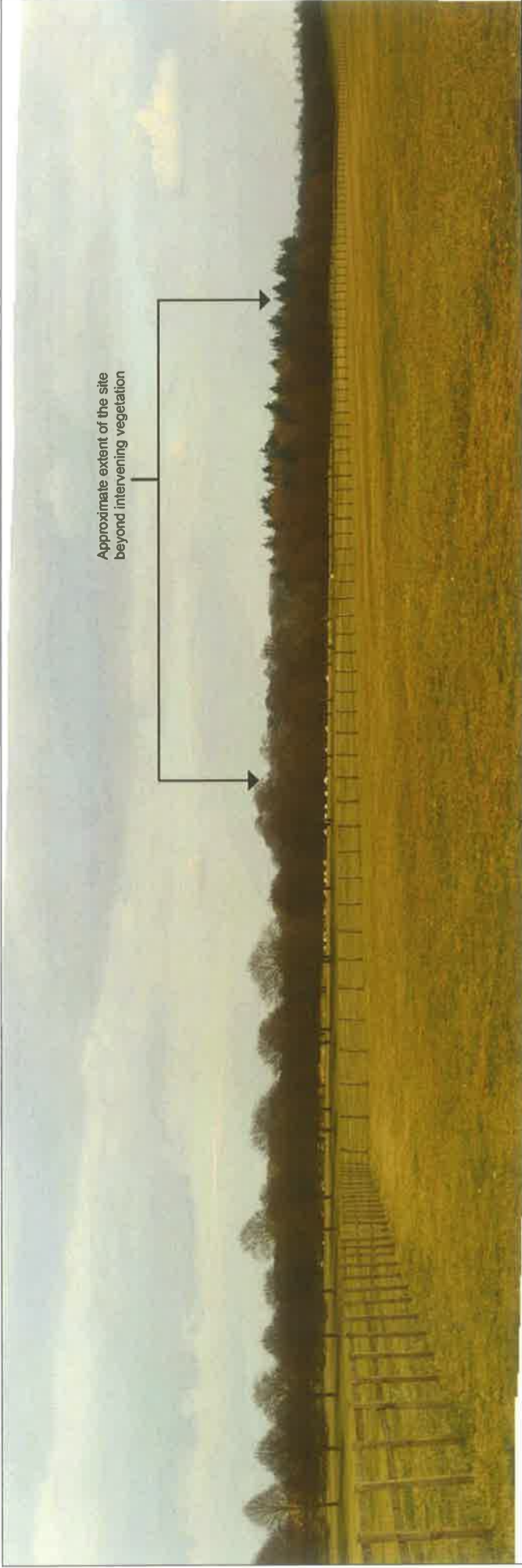


Viewpoint M

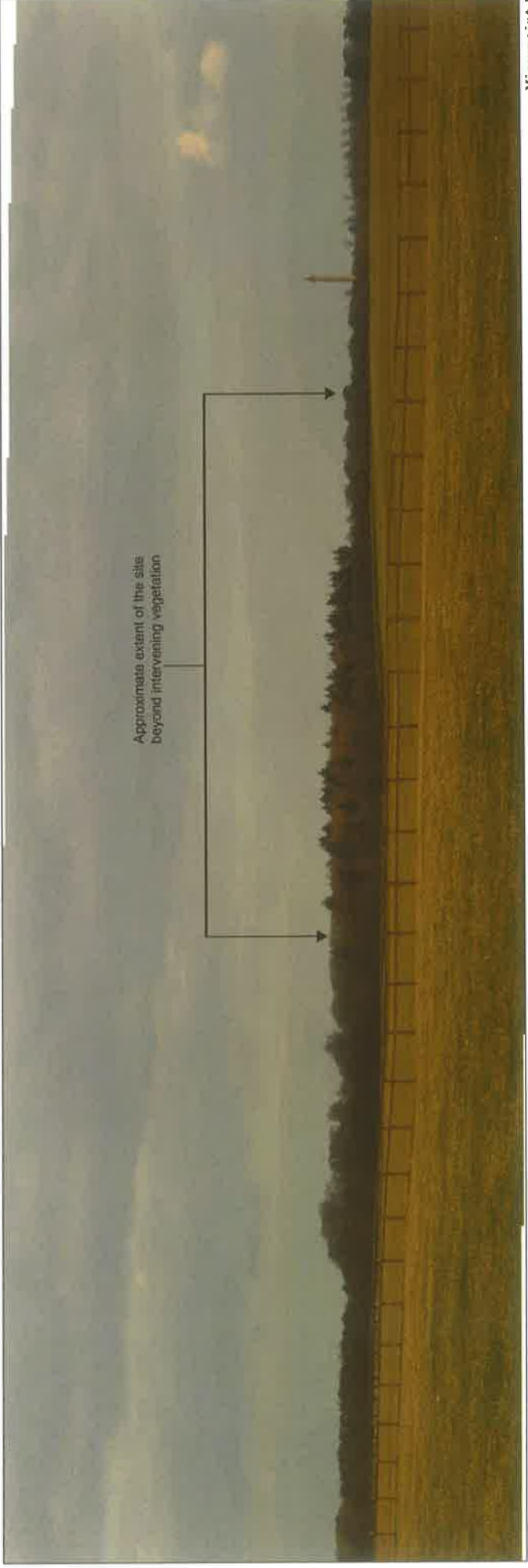


Viewpoint N

N.B. IMAGES TO ILLUSTRATE THE EXISTING LANDSCAPE CONTEXT ONLY. Panoramas are created from multiple photographs, taken using a digital equivalent of a 35mm camera with 50mm lens, with best practice and current guidance. Images illustrate a horizontal field of view of 68° and when printed at A3, should be viewed at a distance of 330mm (measured through the radius) in order to correctly illustrate the existing landscape context. To ensure considered judgements are accurately assessed, images should not be substituted for visiting the viewpoint.

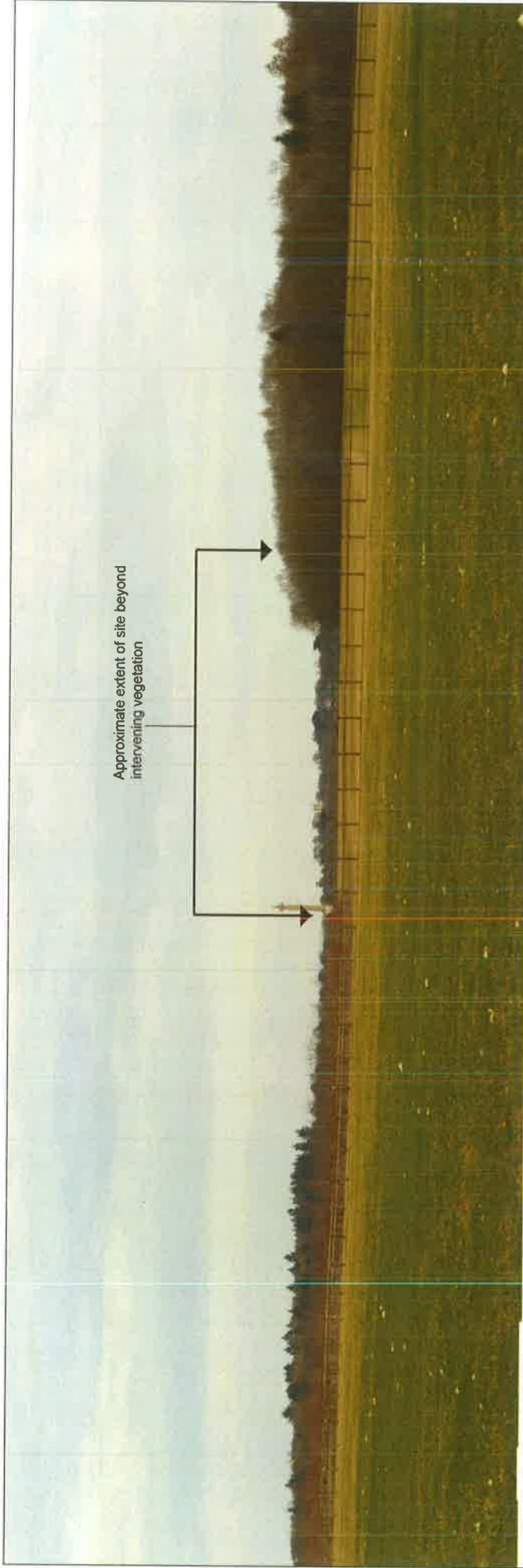


Viewpoint O

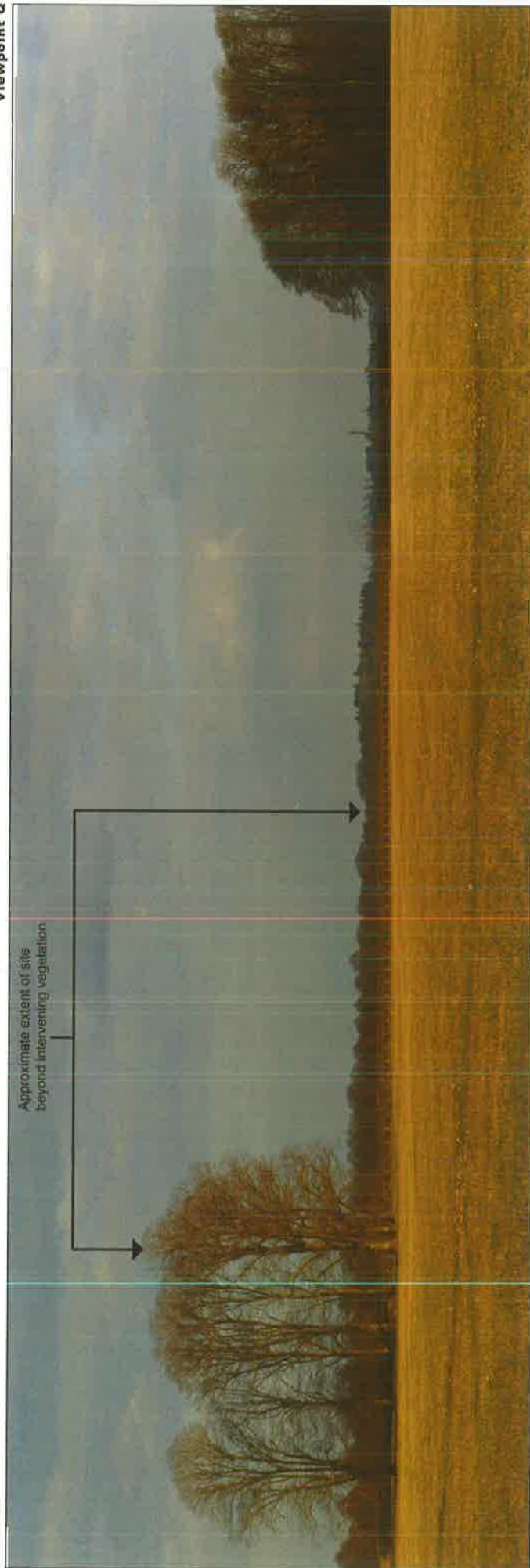


Viewpoint P

N.B. IMAGES TO ILLUSTRATE THE EXISTING LANDSCAPE CONTEXT ONLY. Panoramas are created from multiple photographs, taken using a digital equivalent of a 35mm camera with 50mm lens in line with best practice and current guidance. Images illustrate a horizontal field of view of 68° and when printed at A3, should be viewed at a distance of 330mm curved through the same radius in order to correctly illustrate the existing landscape context. To ensure considered judgements are accurately assessed, images should not be substituted for visiting the viewpoint.



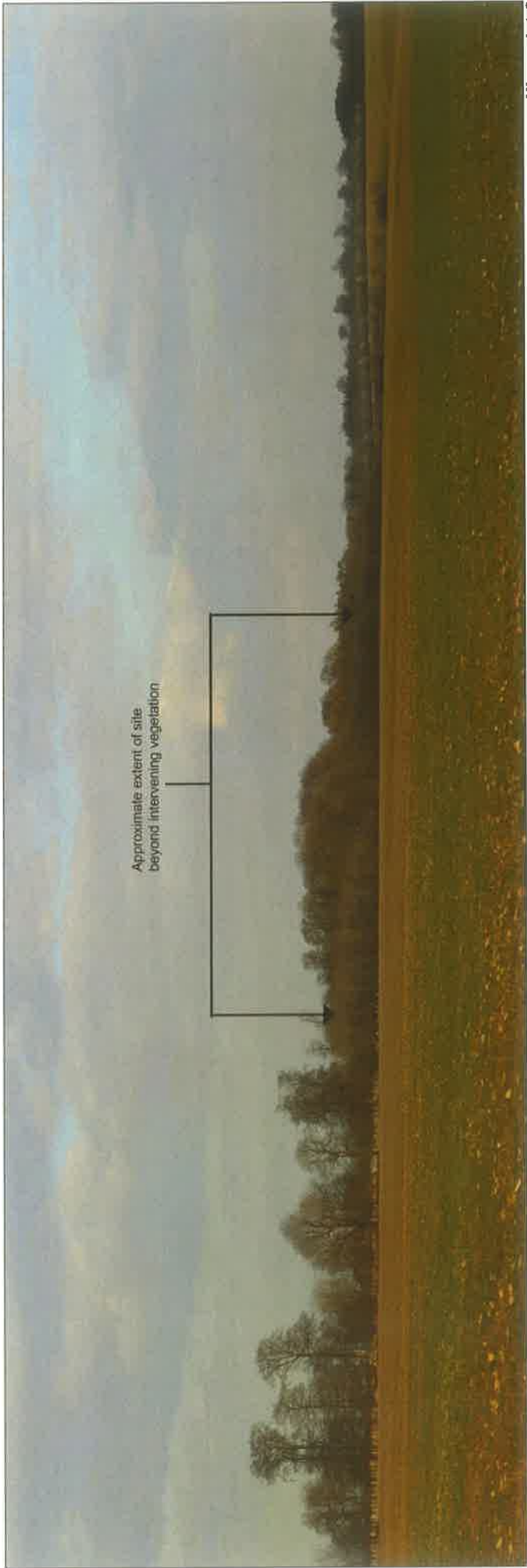
Viewpoint Q



Viewpoint R

N.B. IMAGES TO ILLUSTRATE THE EXISTING LANDSCAPE CONTEXT ONLY. Panoramas are created from multiple photographs taken using a digital equivalent of a 35mm camera with 50mm lens, one with legs, practice and current guidance. Images illustrate a 'dominant field of view of 60°' and when printed at A3, should be viewed at a distance of 330mm (or 13 inches) from the image. To ensure considered judgments are accurately assessed, images should not be substituted for visiting the viewpoint.





**Viewpoint S**



**Viewpoint T**

**N.B. IMAGES TO ILLUSTRATE THE EXISTING LANDSCAPE CONTEXT ONLY** Panoramas are created from multiple photographs taken using a digital equivalent of a 35mm camera with 50mm lens in line with best practice and current guidance. Images illustrate a horizontal field of view of 68° and when printed at A3, should be viewed at a distance of 330mm curved through the same radius in order to correctly illustrate the existing landscape context. To ensure considered judgements are accurately assessed, images should not be substituted for visiting the viewpoint



Viewpoint U



Viewpoint V

N.B. IMAGES TO ILLUSTRATE THE EXISTING LANDSCAPE CONTEXT ONLY. Panoramas are created from multiple photographs taken using a digital equivalent of a 35mm camera with 50mm lens, in line with best practice and current guidance. Images illustrate a horizontal field of view of 68° and when printed at A3, should be viewed at a distance of 330mm curved through the same radius in order to correctly illustrate the existing landscape context. To ensure considered judgements are accurately assessed, images should not be substituted for visiting the viewpoint.



Viewpoint W



Viewpoint X

N.B. IMAGES TO ILLUSTRATE THE EXISTING LANDSCAPE CONTEXT ONLY. Panoramas are created from multiple photographs taken using a digital equivalent of a 35mm camera with 50mm lens in line with best practice and current guidance. Images illustrate a horizontal field of view of 68° and when printed at A3, should be viewed at a distance of 330mm curved through the same radius in order to correctly illustrate the existing landscape context. To ensure considered judgements are accurately assessed, images should not be substituted for visiting the viewpoint.



Viewpoint Y



Viewpoint Z



Viewpoint Z

N.B. IMAGES TO ILLUSTRATE THE EXISTING LANDSCAPE CONTEXT ONLY. Panoramas are created from multiple photographs taken using a digital equivalent of a 35mm camera with 50mm lens in line with best practice and current guidance. Images illustrate a horizontal field of view of 68° and when printed at A3, should be viewed at a distance of 330mm curved through the same radius in order to correctly illustrate the existing landscape context. To ensure considered judgements are accurately assessed, images should not be substituted for visiting the viewpoint.



# Chapter 9

## Appendix C: Summer/Winter Views






**West Waddy ADP LLP**

The Malthouse • 60 East St Helen Street • Abingdon • Oxfordshire • OX14 5EB  
01235 523139 • enquiries@westwaddy-adp.co.uk • www.westwaddy-adp.co.uk

NOTES  
 This document is the property of Aspect Landscape Planning and should not be used for any other purpose without the written consent of Aspect Landscape Planning. All rights reserved.  
 Aspect Landscape Planning Ltd, 100 High Street, London, E15 2JF, UK  
 Tel: 020 300 12345  
 Email: info@aspectlandscapeplanning.co.uk  
 Copyright reserved  
 All dimensions to be verified from the drawings.



**Key:**

-  Site Boundary
-  Viewpoint Location
-  Bridleway
-  Footpath
-  Monument View Cone



REV DATE REVISIONS  
 NOTE  
 DRAWN: C.M.B.

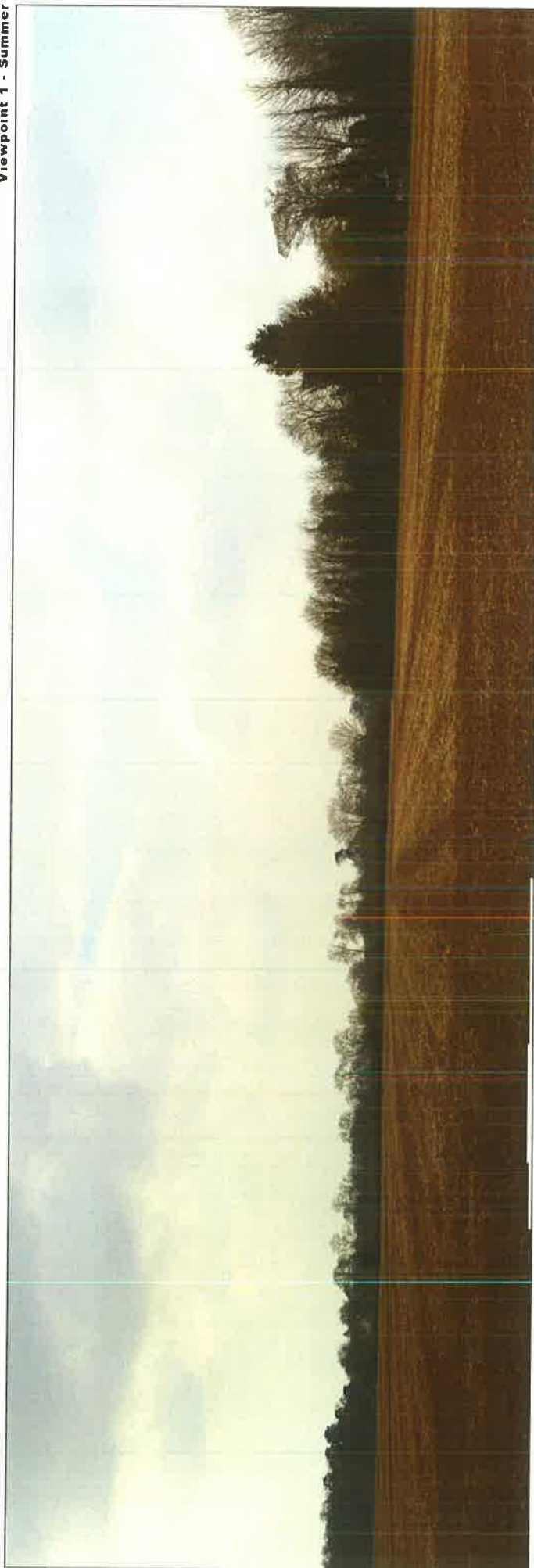
**aspect landscape planning**

TITLE  
**Land South East of Woodstock**  
**Viewpoint Location Plan**  
 CLIENT

SCALE NOT TO SCALE  
 DATE SEPT 2014, J.M.  
 DRAWING NUMBER 55101\_VLP\_001  
 REVISION



Viewpoint 1 - Summer



Viewpoint 1 - Winter

N.B. IMAGES TO ILLUSTRATE THE EXISTING LANDSCAPE CONTEXT ONLY. Panoramas are created from multiple photographs taken using a digital equivalent of a 35mm camera with 50mm lens in line with best practice and current guidance. Images illustrate a horizontal field of view of 68° and when printed at A3, should be viewed at a distance of 330mm curved through the same radius in order to correctly illustrate the existing landscape context. To ensure considered judgments are accurately assessed, images should not be substituted for visiting the viewpoint.





Viewpoint 2 - Summer

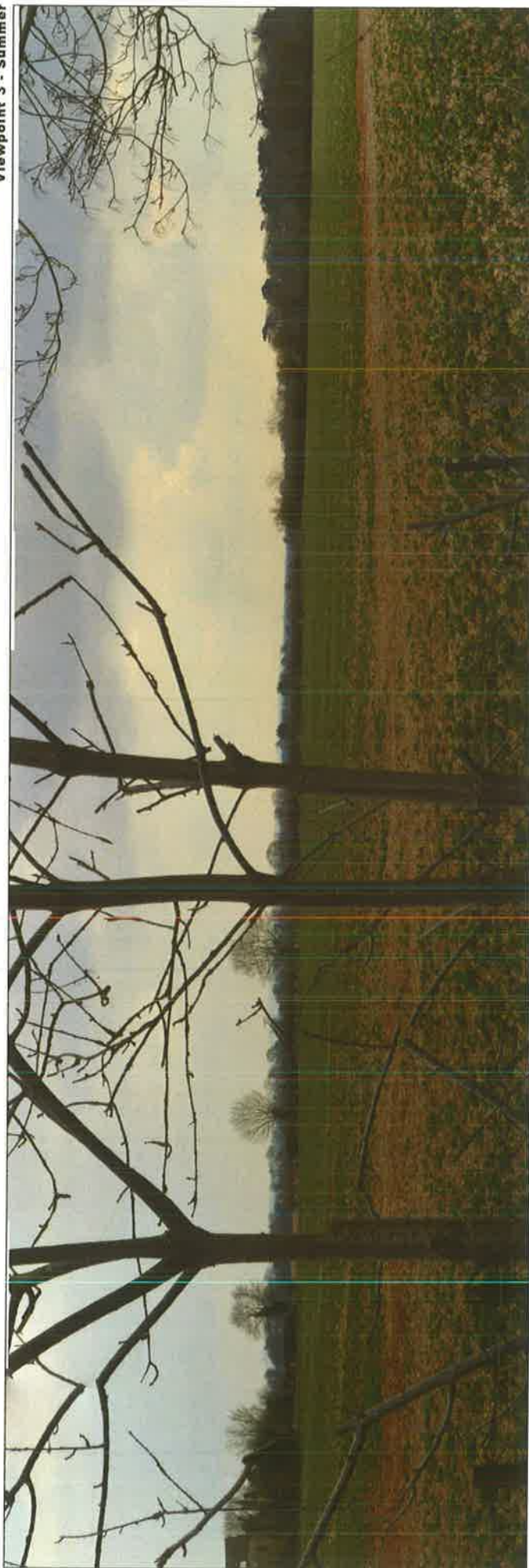


Viewpoint 2 - Winter

N.B. IMAGES TO ILLUSTRATE THE EXISTING LANDSCAPE CONTEXT ONLY. Panoramas are created from multiple photographs taken using a digital equivalent of a 35mm camera with 50mm lens in line with best practice and current guidance. Images illustrate a horizontal field of view of 65° and when printed at A3, should be viewed at a distance of 330mm curved through the same radius in order to correctly illustrate the existing landscape context. To ensure considered judgements are accurately assessed, images should not be substituted for visiting the viewpoint.



Viewpoint 3 - Summer



Viewpoint 3 - Winter

N.B. IMAGES TO ILLUSTRATE THE EXISTING LANDSCAPE CONTEXT ONLY. Panoramas are created from multiple photographs taken using a digital equivalent of a 35mm camera with 50mm lens in line with best practice and current guidance. Images illustrate a horizontal field of view of 66° and when printed at A3, should be viewed at a distance of 330mm curv through the same radius in order to correctly illustrate the existing landscape context. To ensure considered judgements are accurately assessed, images should not be substituted for visiting the viewpoint.

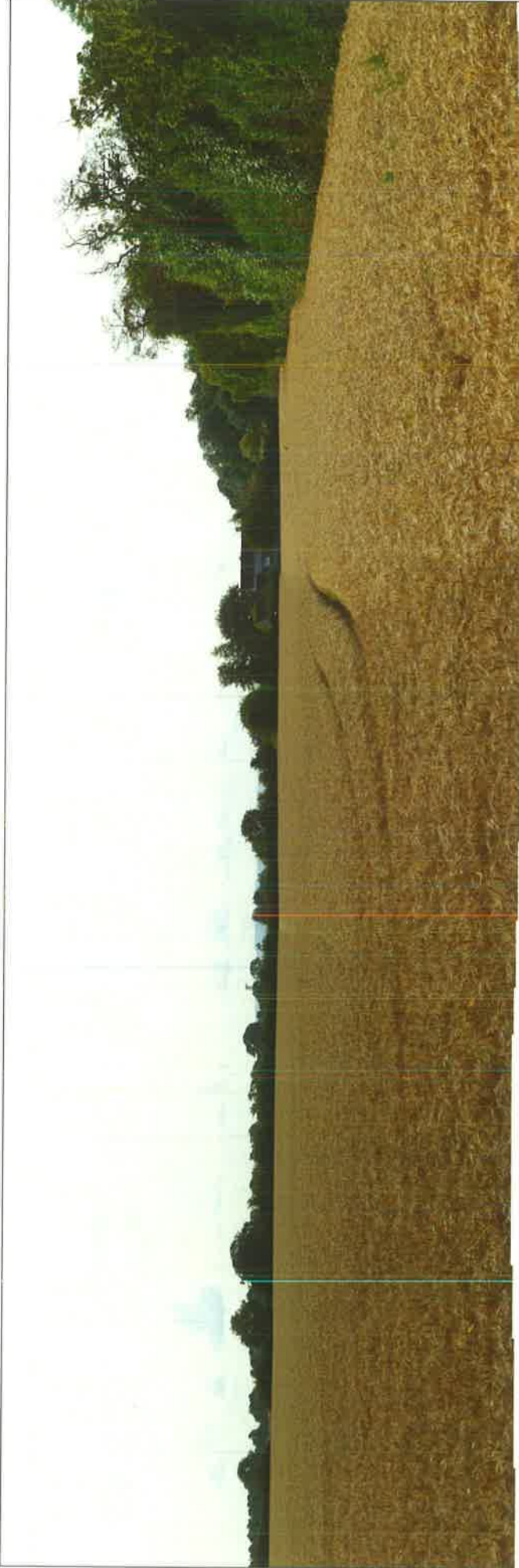


Viewpoint 4 - Summer



Viewpoint 4 - Winter

N.B. IMAGES TO ILLUSTRATE THE EXISTING LANDSCAPE CONTEXT ONLY. Panoramas are created from multiple photographs, taken using a digital equivalent of a 35mm camera with 50mm lens in line with best practice and current guidance. Images illustrate a horizontal field of view of 68° and when printed at A3, should be viewed at a distance of 330mm curved through the same radius in order to correctly illustrate the existing landscape context. To ensure considered judgements are accurately assessed, images should not be substituted for visiting the viewpoint.



Viewpoint 5 - Summer



Viewpoint 5 - Winter

N.B. IMAGES TO ILLUSTRATE THE EXISTING LANDSCAPE CONTEXT ONLY. Panoramas are created from multiple photographs taken using a digital camera with 35mm lens (line with best practice) and current guidance. Images illustrate a field of view of 68° and when printed at A3, should be viewed at a distance of 330mm (curved through) to accurately illustrate the existing landscape context. To ensure considered judgements are accurately assessed, images should not be substituted for visiting the viewpoint.

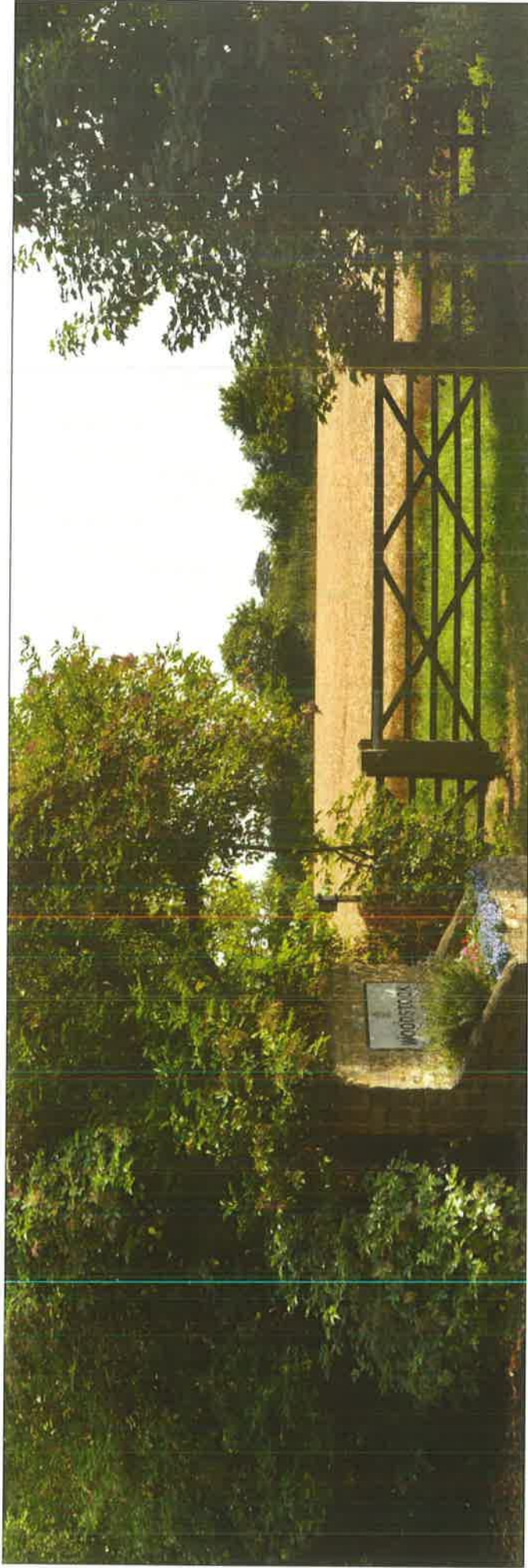


Viewpoint 6 - Summer



Viewpoint 6 - Winter

N.B. IMAGES TO ILLUSTRATE THE EXISTING LANDSCAPE CONTEXT ONLY. Panoramas are created from multiple photographs taken using a digital equivalent of a 35mm camera with 50mm lens in line with best practice and current guidance. Images illustrate a horizontal field of view of 66° and when printed at A3, should be viewed at a distance of 330mm curved through the same radius in order to correctly illustrate the existing landscape context. To ensure considered judgements are accurately assessed, images should not be substituted for visiting the viewpoint.



Viewpoint 7 - Summer



Viewpoint 7 - Winter

N.B. IMAGES TO ILLUSTRATE THE EXISTING LANDSCAPE CONTEXT ONLY. Panoramas are created from multiple photographs taken using a digital equivalent of a 35mm camera with 50mm lens, in line with best practice and current guidance. Images illustrate a horizontal field of view of 68° and when printed at A3, should be viewed at a distance of 330mm (curved through the same radius) in order to correctly illustrate the existing landscape context. To ensure considered judgements are accurately assessed, images should not be substituted for visiting the viewpoint.



Viewpoint 8 - Summer



Viewpoint 8 - Winter

N.B. IMAGES TO ILLUSTRATE THE EXISTING LANDSCAPE CONTEXT ONLY. Panoramas are created from multiple photographs taken using a digital equivalent of a 35mm camera with 50mm lens in line with best practice and current guidance. Images illustrate a horizontal field of view of 68° and when printed at A3, should be viewed at a distance of 330mm curved through the same radius in order to correctly illustrate the existing landscape context. To ensure considered judgements are accurately assessed, images should not be substituted for visiting the viewpoint.



Viewpoint 9 - Summer



Viewpoint 9 - Winter

N.B. IMAGES TO ILLUSTRATE THE EXISTING LANDSCAPE CONTEXT ONLY. Panoramas are created from multiple photographs taken using a digital equivalent of a 35mm camera with 50mm lens. Line with base provided for each image to indicate a horizontal field of view of 68° and when printed at A3 should be viewed at a distance of 330mm. The radius in order to correctly illustrate the existing landscape context. To ensure considered judgements are accurately assessed, images should not be substituted for visiting the viewpoint.



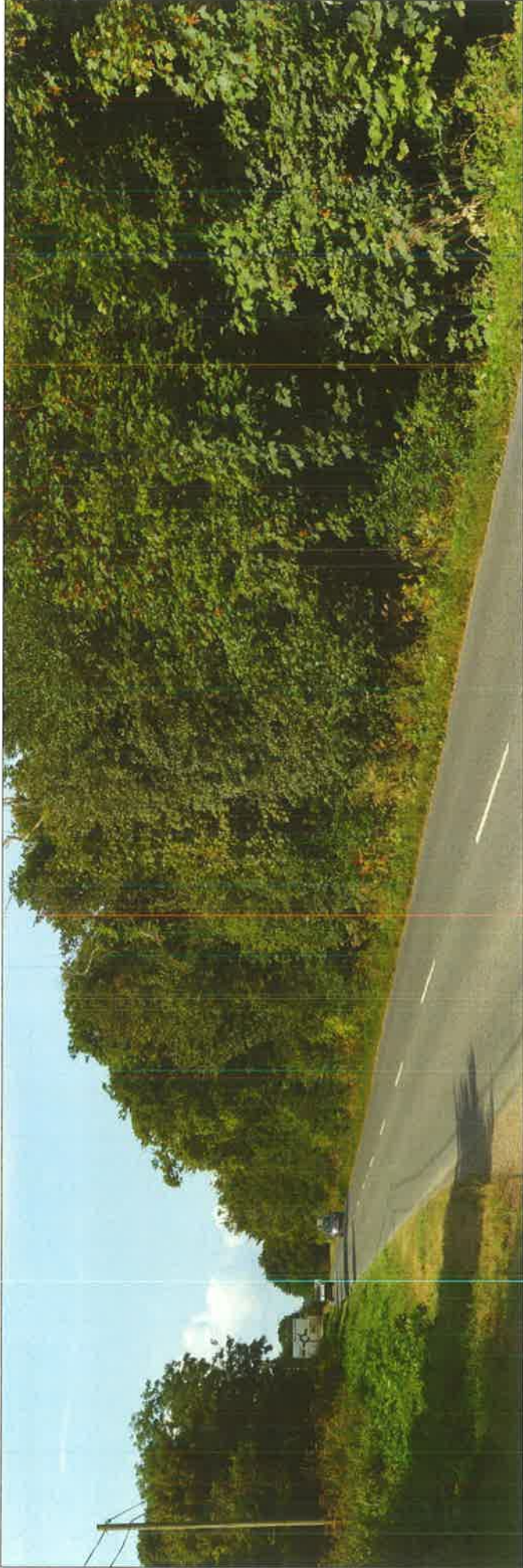


Viewpoint 10 - Summer



Viewpoint 10 - Winter

N.B. IMAGES TO ILLUSTRATE THE EXISTING LANDSCAPE CONTEXT ONLY. Panoramas are created from multiple photographs taken using a digital equivalent of a 35mm camera with 50mm lens in line with best practice and current guidance. Images illustrate a horizontal field of view of 68° and when printed at A3, should be viewed at a distance of 330mm curved through the same radius in order to correctly illustrate the existing landscape context. To ensure considered judgements are accurately assessed, images should not be substituted for visiting the viewpoint.



Viewpoint 11 - Summer



Viewpoint 11 - Winter

N.B. IMAGES TO ILLUSTRATE THE EXISTING LANDSCAPE CONTEXT ONLY. Panoramas are created from multiple photographs taken using a digital equivalent of a 35mm camera with 50mm lens, in line with best practice and current guidance. Images illustrate a horizontal field of view of 68° and when printed at A3, should be viewed at a distance of 330mm curved through the same radius in order to correctly illustrate the existing landscape context. To ensure considered judgements are accurately assessed, images should not be substituted for visiting the viewpoint.



Viewpoint 12 - Summer

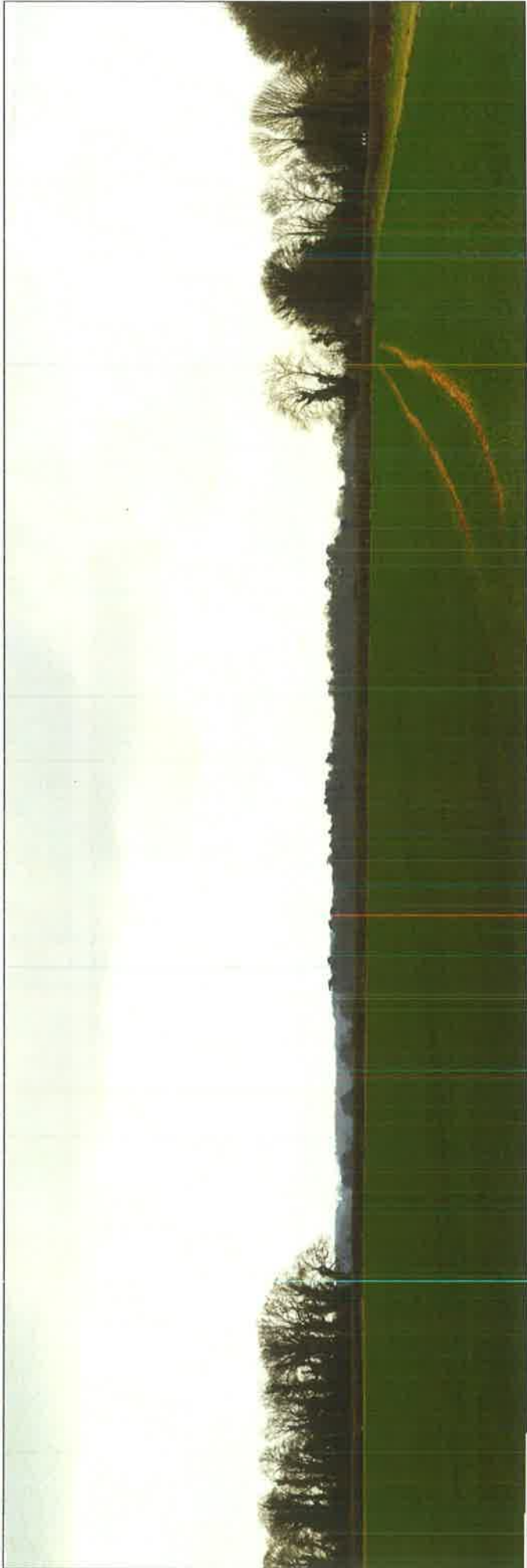


Viewpoint 12 - Winter

N.B. IMAGES TO ILLUSTRATE THE EXISTING LANDSCAPE CONTEXT ONLY. Panoramas are created from multiple photographs taken using a digital equivalent of a 35mm camera with 50mm lens in line with best practice and current guidance. Images illustrate a horizontal field of view of 68° and when printed at A3, should be viewed at a distance of 330mm curved through the same radius in order to correctly illustrate the existing landscape context. To ensure considered judgements are accurately assessed, images should not be substituted for visiting the viewpoint.



Viewpoint 13 - Summer



Viewpoint 13 - Winter

N.B. IMAGES TO ILLUSTRATE THE EXISTING LANDSCAPE CONTEXT ONLY. Panoramas are created from multiple photographs taken using a digital equivalent of a 35mm lens with 50mm lens in line with best practice and current guidance. Images illustrate a horizontal field of view of 60° and were oriented at 43° should be viewed at a distance of 330mm curved through the same radius in order to correctly illustrate the existing landscape context. To ensure considered judgements are accurately assessed, images should not be substituted for visiting the viewpoint.



Viewpoint 14 - Summer

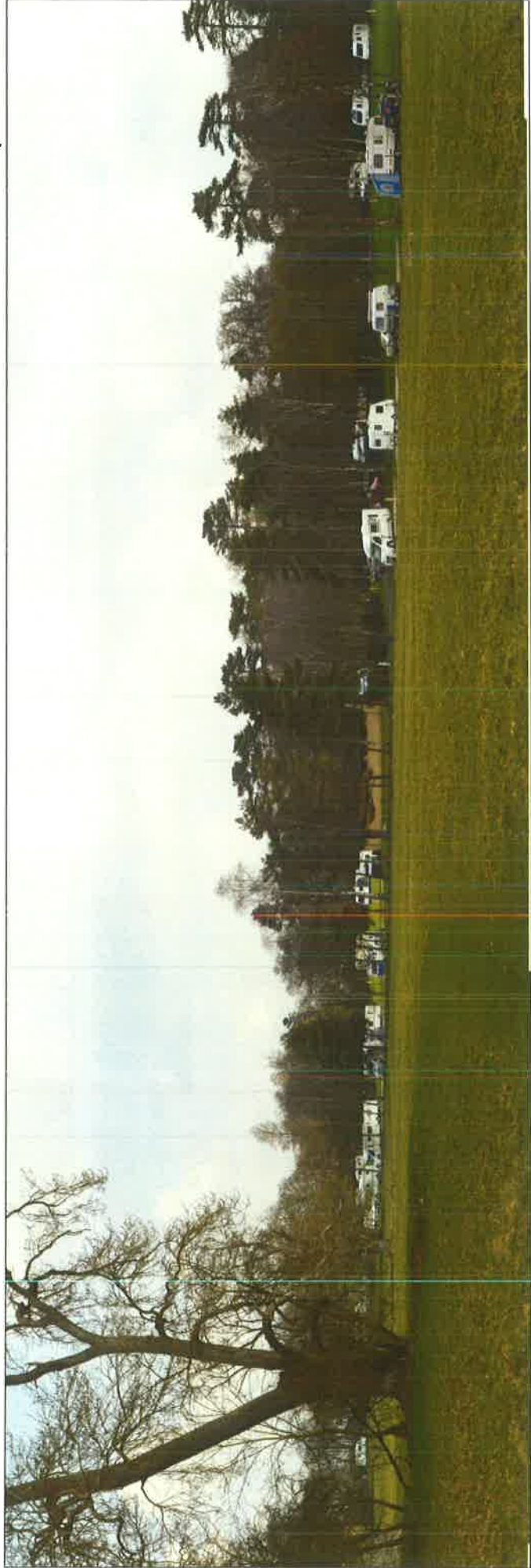


Viewpoint 14 - Winter

N.B. IMAGES TO ILLUSTRATE THE EXISTING LANDSCAPE CONTEXT ONLY. Panoramas are created from multiple photographs taken using a digital equivalent of a 35mm camera with 50mm lens in line with best practice and current guidance. Images illustrate a horizontal field of view of 68° and when printed at A3, should be viewed at a distance of 330mm curved through the same radius in order to correctly illustrate the existing landscape context. To ensure considered judgements are accurately assessed, images should not be substituted for visiting the viewpoint.



**Viewpoint 15 - Summer**



**Viewpoint 15 - Winter**

N.B. IMAGES TO ILLUSTRATE THE EXISTING LANDSCAPE CONTEXT ONLY. Panoramas are created from multiple photographs taken using a digital equivalent of a 35mm camera with 50mm lens in line with best practice and current guidance. Images illustrate a horizontal field of view of 60° and should be viewed at 1:3. Images should be viewed at a distance of 330mm curved through the same radius in order to correctly illustrate the existing landscape context. To ensure considered judgements are accurately assessed, images should not be substituted for visiting the viewpoint.



Viewpoint 16 - Summer



Viewpoint 16 - Winter

N.B. IMAGES TO ILLUSTRATE THE EXISTING LANDSCAPE CONTEXT ONLY. Panoramas are created from multiple photographs, taken using a digital equivalent of a 35mm camera with 50mm lens in line with best practice and current guidance. Images illustrate a horizontal field of view of 68° and when printed at A3, should be viewed at a distance of 330mm curved through the same radius in order to correctly illustrate the existing landscape context. To ensure considered judgements are accurately assessed, images should not be substituted for visiting the viewpoint.



**Viewpoint 17 - Summer**



**Viewpoint 17 - Winter**

**N.B. IMAGES TO ILLUSTRATE THE EXISTING LANDSCAPE CONTEXT ONLY.** Panoramas are created from multiple photographs taken using a digital equivalent of a 35mm camera with 50mm lens in line with best practice and current guidance. Images illustrate a 'horizon' field of view of 98° and when printed should be read at a distance of 130cm. In order to correctly illustrate the existing landscape context, To ensure considered judgments are accurately assessed, images should not be substituted for visiting the viewpoint.





Viewpoint 18 - Summer



Viewpoint 18 - Winter

N.B. IMAGES TO ILLUSTRATE THE EXISTING LANDSCAPE CONTEXT ONLY. Panoramas are created from multiple photographs taken using a digital equivalent of a 35mm camera with 50mm lens in line with best practice and current guidance. Images illustrate a horizontal field of view of 66° and when printed at A3, should be viewed at a distance of 330mm curved through the same radius in order to correctly illustrate the existing landscape context. To ensure considered judgements are accurately assessed, images should not be substituted for visiting the viewpoint.



Viewpoint 19 - Summer



Viewpoint 19 - Winter

N.B. IMAGES TO ILLUSTRATE THE EXISTING LANDSCAPE CONTEXT ONLY. Panoramas are created from multiple photographs taken using a digital equivalent of a 35mm camera with 50mm lens in line with best practice and current guidance. Images illustrate a horizontal field of view of 180 degrees. Images should be viewed at A3, should be viewed at a distance of 330mm curved through the same radius in order to correctly illustrate the existing landscape context. To ensure considered judgements are accurately assessed, images should not be substituted for visiting the viewpoint.



Viewpoint 20 - Summer



Viewpoint 20 - Winter



Viewpoint 21 - Summer



Viewpoint 21 - Winter

N.B. IMAGES TO ILLUSTRATE THE EXISTING LANDSCAPE CONTEXT ONLY. Panoramas are created from multiple photographs taken using a digital equivalent of a 35mm camera with 50mm lens, line with best practice and current guidance. Images illustrate a horizontal field of view of 60°, and when printed at A3, should be viewed at a distance of 330mm. To ensure considered judgements are accurately assessed, images should not be substituted for visiting the viewpoint.



Viewpoint 22 - Summer



Viewpoint 22 - Winter

N.B. IMAGES TO ILLUSTRATE THE EXISTING LANDSCAPE CONTEXT ONLY. Panoramas are created from multiple photographs taken using a digital equivalent of a 35mm camera with 50mm lens in line with best practice and current guidance. Images illustrate a horizontal field of view of 68° and when printed at A3, should be viewed at a distance of 330mm curved through the same radius in order to correctly illustrate the existing landscape context. To ensure considered judgements are accurately assessed, images should not be substituted for visiting the viewpoint.



Viewpoint 23 - Summer



Viewpoint 23 - Winter

N.B. IMAGES TO ILLUSTRATE THE EXISTING LANDSCAPE CONTEXT ONLY. Panoramas are created from multiple photographs taken using a digital equivalent of a 35mm camera with 50mm lens in line with best practice and current guidance. Images illustrate a horizontal field of view of 68° and were printed at A3. Should be viewed at a distance of 330mm curved through the same radius in order to correctly illustrate the existing landscape context. To ensure considered judgements are accurately assessed, images should not be substituted for visiting the viewpoint.



Viewpoint 24 - Summer



Viewpoint 24 - Winter

N.B. IMAGES TO ILLUSTRATE THE EXISTING LANDSCAPE CONTEXT ONLY. Panoramas are created from multiple photographs taken using a digital equivalent of a 35mm camera with 50mm lens in line with best practice and current guidance. Images illustrate a horizontal field of view of 68° and when printed at A3, should be viewed at a distance of 330mm curved through the same radius in order to correctly illustrate the existing landscape context. To ensure considered judgements are accurately assessed, images should not be substituted for visiting the viewpoint.



Viewpoint 25 - Summer



Viewpoint 25 - Winter

N.B. IMAGES TO ILLUSTRATE THE EXISTING LANDSCAPE CONTEXT ONLY. Panoramas are created from multiple photographs taken using a digital equivalent of a 35mm camera with 50mm lens, with best practice and correct guidance. Images illustrate a horizontal field of view of 68° and when printed at A2, should be viewed at a distance of 330mm from the image in order to correctly illustrate the existing landscape context. To ensure considered judgements are accurately assessed, images should not be substituted for visiting the viewpoint.





Viewpoint 26 - Summer



Viewpoint 26 - Winter

N.B. IMAGES TO ILLUSTRATE THE EXISTING LANDSCAPE CONTEXT ONLY. Panoramas are created from multiple photographs taken using a digital resolution of a 35mm camera with 50mm lens in line with best practice and current guidance. Images illustrate a horizontal field of view of 68° and when printed at A3 should be viewed at a distance of 330mm curved through the same radius in order to correctly illustrate the existing landscape context. To ensure considered judgements are accurately assessed, images should not be substituted for visiting the viewpoint.

