

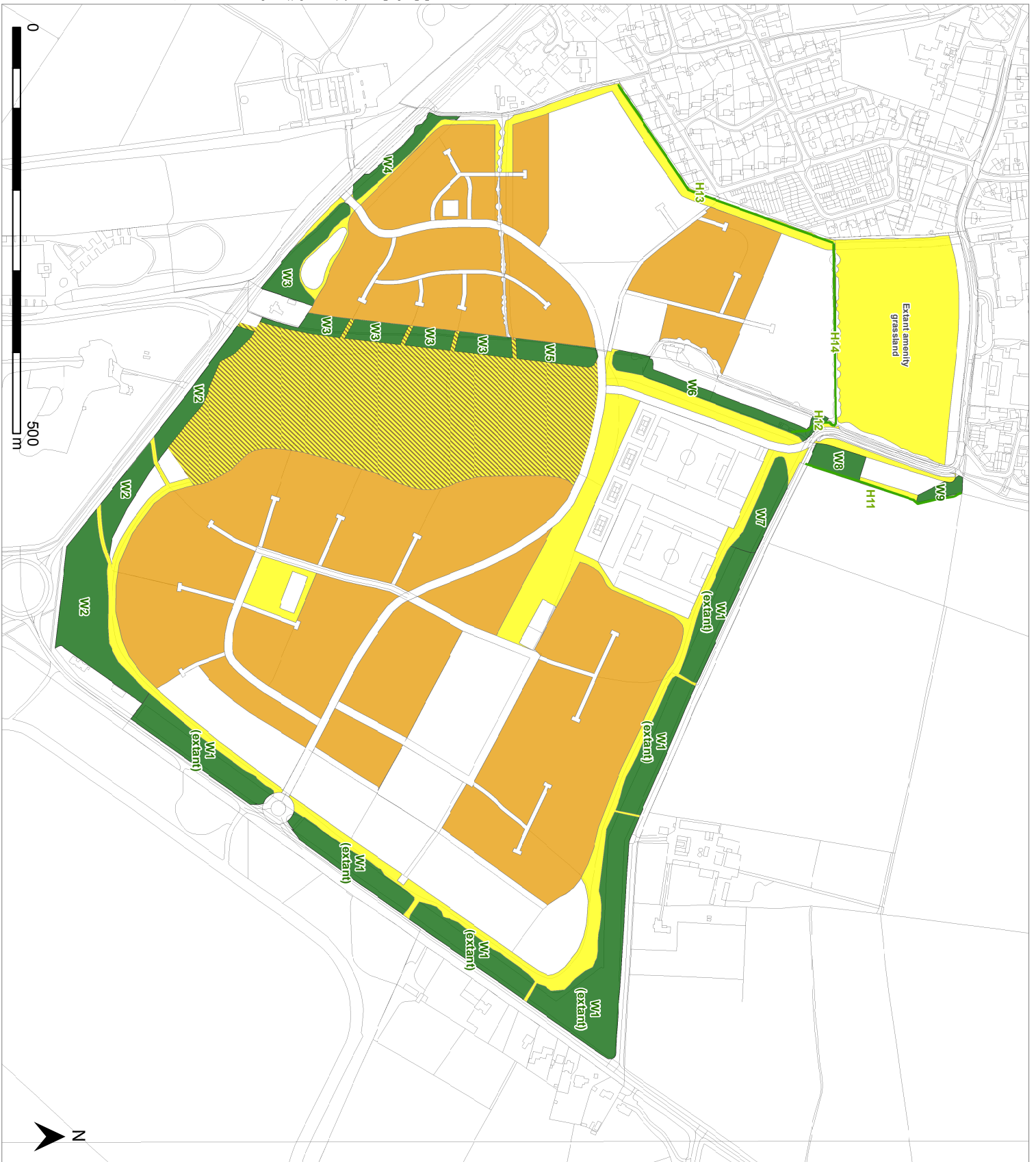


Environmental Statement Addendum
Chapter 12 Appendices:
Appendix A: Plan of Mitigation Measures
Appendix B: Phase 1 Habitat Plan
Appendix C: Residual Impacts on the Ecological Receptors



Chapter 12

Appendix A: Plan of Mitigation Measures



LEGEND

- Site boundary
- New amenity grassland
- New amenity grassland/conservation area
- Housing and gardens
- W1 New woodland
- H1 New hedge



OFFICE: Oxford
T: 01865 883833

JOB REF: 7648.06

PROJECT TITLE
WOODSTOCK SOUTH EAST
ES ADDENDUM

DRAWING TITLE
Figure 2: Mitigation Proposals Plan

DATE: 14.05.2015 CHECKED: JB SCALE: 1:4,500
DRAWN: COH APPROVED: GHC STATUS: FINAL

Copyright © BSG Ecology

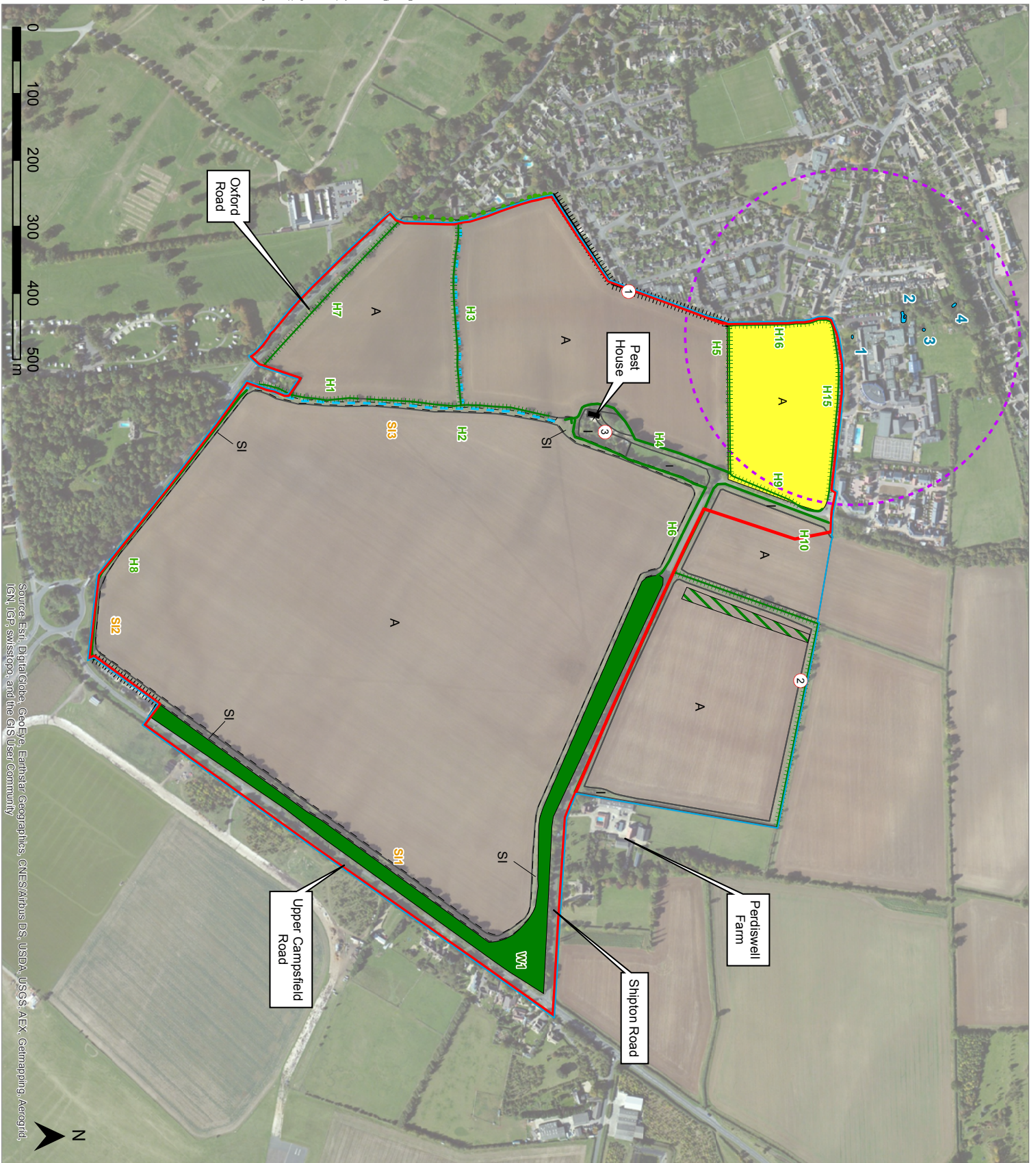
No dimensions are to be scaled from this drawing.
All dimensions are to be checked on site.
Area measurements for indicative purposes only.

This drawing may contain Ordnance Survey material by permission of Ordnance Survey on behalf of the Controller of Her Majesty's Stationery Office © Crown Copyright 2015. All rights reserved. Reference number: 10048880
OS Open data © Crown copyright and database right 2015. Aerial Photography © Esri
Sources: BSG Ecology survey data; areas derived from SK14 Land Use Plan (produced by West Woxey ACP)



Chapter 12

Appendix B: Phase 1 Habitat Plan



LEGEND

- Site boundary
- Ecological Study Area boundary

① Target note

- Broadleaved semi-natural woodland
- Plantation woodland
- Improved grassland
- Semi-improved grassland
- Pond

1 Pond reference

250m radius from Pond 1

Arable

Amenity grassland

Building

Species-poor hedge

Species-poor hedge with trees

H1 Hedge reference

Fence

Dry ditch

Broadleaved tree



OFFICE: Oxford
T: 01865 883833

JOB REF: 7648.06

PROJECT TITLE
WOODSTOCK SOUTH EAST
ES ADDENDUM

DRAWING TITLE
Figure 3: Phase 1 Habitat Plan

DATE: 14.05.2015 CHECKED: JB SCALE: 1:5,000
DRAWN: COH APPROVED: GHC STATUS: FINAL

Copyright © BSG Ecology

No dimensions are to be scaled from this drawing.
All dimensions are to be checked on site.
Area measurements for indicative purposes only.

This drawing may contain Ordnance Survey material by permission of Ordnance Survey on behalf of The Controller of Her Majesty's Stationery Office © Crown Copyright 2015. All rights reserved.
OS Open data © Crown copyright and database right 2015. Licensed under the Open Government Licence v3.0.
Sources: BSG Ecology site file; the boundary derived from SK 114 Land Use Plan (produced by West Woods ADP)

Source: Esri, DigitalGlobe, GeoEye, Earthstar Geographics, CNES/Airbus DS, USDA, USGS, AeroX, Gemmapping, AeroGRID, IGN, IGP, swisstopo, and the GIS User Community



Chapter 12

Appendix C: Residual Impacts on the Ecological Receptors

Ecology and Nature Conservation

Appendix C: The residual impacts of the development on the ecological receptors identified during the baseline studies and marked on Figure 3.



Revision to ES	Changes to Ecological Impact Assessment	Value	Phase of development	Design Mitigation	Potential Impact prior to mitigation (taking in to account Design Mitigation)	Mitigation Measures	Residual Impacts and likely significance at geographic scale of reference
1.Primary Road through site moved north of original road alignment	Hedgerows – Direct loss of habitat on boundary hedgerows on central section of Site (H2).	Parish	Construction	Retention of most hedgerows on Site with only short sections removed Inclusion in the Green Network of additional tree line and hedge planting Hedgerow species will be native and of local provenance. Appropriate use of lighting during construction.	Long-term, positive impact of medium magnitude on hedgerow habitat significant at a Parish level	Adherence to British standards in relation to trees. Best practice management of hedgerows Adoption of Lighting Strategy.	Long-term, positive impact on hedgerow habitat significant at a Parish level
	Woodland – direct loss on eastern boundary of Site (W1). The relocation of	Parish	Construction and Operational	Retention of most of the on-site woodland with	Long term positive impact of medium magnitude at Parish	Adherence to British standards in relation to trees.	Long-term, positive impact at a Parish level.

	the Primary Road to the north of the road alignment as shown in ES			<p>only small sections removed along eastern boundary of the Site.</p> <p>Appropriate use of lighting during construction.</p> <p>Green Network tree planting scheme includes: newly created woodland composed of a native species mix; and scattered and individual trees.</p> <p>Tree species will be native and of local provenance.</p>	level.	Adoption of Lighting Strategy.	
	Semi improved grassland – relocation of Primary Road will result in a small reduction in field margin semi improved grassland habitat (S13) associated with hedgerows and arable field margins	Parish	Construction and Operational	<p>Retention of semi improved grassland habitats along the Site boundary.</p> <p>The Green Network includes</p>	Long term positive impact of medium magnitude at a Parish level	Non required	Long term positive impact at a Parish level

				<p>the creation of the following grassland habitats:</p> <ul style="list-style-type: none"> • conservation species-rich lawns ; • amenity grassland; and • amenity grassland (gardens) 			
	Reptiles – direct loss of habitats including semi improved grassland (SI3), hedgerow (H2)	Parish	Construction	<p>Retention of most hedgerows on Site with only small sections being removed.</p> <p>Retention of semi improved grassland habitats along the Site boundary.</p>	Short Negative permanent impact low magnitude	Preparation of mitigation strategy: translocation of reptile population from construction footprint to newly created receptor site	No negative impact at any geographic level
			Operational	Inclusion in the Green Network (on and off site) of additional tree line and hedge planting	Positive permanent impact medium magnitude	Management of receptor site for reptiles	Long term positive at Parish level

				<p>The Green Network includes the creation of the following grassland habitats:</p> <ul style="list-style-type: none"> • conservation species-rich lawns ; • amenity grassland; and • amenity grassland (gardens) 			
	Overall breeding bird community – direct loss of habitat including semi improved grassland (SI3) and hedgerow (H2)	Site	Construction	<p>Retention of most of the on-site woodland with only small sections removed along eastern boundary of The Site.</p> <p>Retention of most hedgerows on Site with only small sections being removed.</p>	Low short term negative impact at Site level	Site clearance at appropriate time of year to avoid nesting season, or check by ecologist	No negative impact at any geographic level
		Site	Operational	Green Network	Long term positive	Adherence to British	Long term positive

				<p>tree planting scheme includes; of newly created woodland composed of a native species mix; and scattered and individual trees.</p> <p>Tree species will be native and of local provenance.</p> <p>The Green Network includes the creation of the following grassland habitats:</p> <ul style="list-style-type: none"> • conservation species-rich lawns; • amenity grassland; and • amenity grassland including gardens 	impact at Parish level	<p>standards in relation to trees.</p> <p>Best practice management of hedgerows</p> <p>Adoption of Lighting Strategy.</p>	impact at Parish level
	Yellowhammers and Skylark – direct loss of	Site	Construction	Appropriate use of lighting during	Short term negative low impact at Site	Site clearance at appropriate time of	No negative impact at any geographic

	habitat in arable fields to the west and east of the Site			construction.	level	year to avoid nesting season, or check by ecologist	level
			Operational	Off Site development of suitable breeding habitat for skylark and yellowhammer within Areas of the Blenheim Estate	Long term positive impact at Parish level	On going management of nesting habitat	Long term positive impact at Parish level
							
							

				Individual trees.			
	Dormouse – direct loss of very small section of habitat including hedgerow H2, severance of commuting route and areas of foraging	District	Construction	Retention of most of the on-site woodland with small areas removed along eastern boundary of the Site. Retention of most hedgerows on Site with only small sections being removed. Appropriate use of lighting during construction.	Short term negative impact of low magnitude through loss of habitat and severance of commuting routes	European Protected Species Derogation Licence	Long term positive impact at District level
			Operational	Appropriate use of lighting during construction. Inclusion in the	Long term positive impact at District level	Adherence to British standards in relation to trees. Best practice	Long term positive impact at District level

				<p>Green Network (on and off site) of additional tree line and hedge planting.</p> <p>Hedgerow species will be native and of local provenance.</p> <p>Creation of arboreal bridges at road junctions within The Site.</p>		<p>management of trees and hedgerows</p> <p>Adoption of Lighting Strategy.</p>	
	Bats – direct loss of foraging and commuting habitat including hedgerow H2 and semi improved grassland S13	Parish	Construction	<p>Retention of most of the on-site woodland with small sections removed along eastern boundary of the Site.</p> <p>Retention of most hedgerows on Site with only small sections being removed.</p> <p>Appropriate use of lighting during construction.</p>	<p>Negative impact on roosting bats of significance at site level.</p> <p>No impact on bat activity as a result of direct loss of habitat (minimal woodland and foraging habitat loss).</p> <p>Negative impact on commuting and foraging bats as a result of construction lighting.</p>	<p>Further survey to establish presence/absence of roosts prior to demolition of buildings and removal of trees, and preparation of a mitigation strategy, if required.</p> <p>Adoption of appropriate lighting strategy.</p>	No significant impact at any geographic level.
			Operational	Green Network tree planting	Neutral impact on bat species with low	Adoption of appropriate lighting	No significant impact at any geographic

				<p>scheme includes; newly created woodland composed of a native species mix, providing potential bat tree roosts.</p> <p>Inclusion in the Green Network (on and off site) of additional tree line and hedge planting.</p> <p>Hedgerow species will be native and of local provenance.</p> <p>Creation of arboreal bridges at road junctions within The Site.</p>	<p>magnitude of significance at The Site level only</p>	<p>strategy</p> <p>Erection of bat boxes to increase roosting opportunities</p>	<p>level.</p>
	<p>Polecat – direct loss of habitat used for foraging and commuting including hedgerow H2 and semi improved grassland SI3</p>	<p>Parish</p>	<p>Construction and Operational</p>	<p>Retention of grassland habitats along the site boundary.</p> <p>Inclusion of conservation species-rich lawns in the</p>	<p>No significant impact/neutral at a Parish level</p>	<p>Adoption of traffic calming measures</p>	<p>No significant impact/neutral at a Parish level</p>

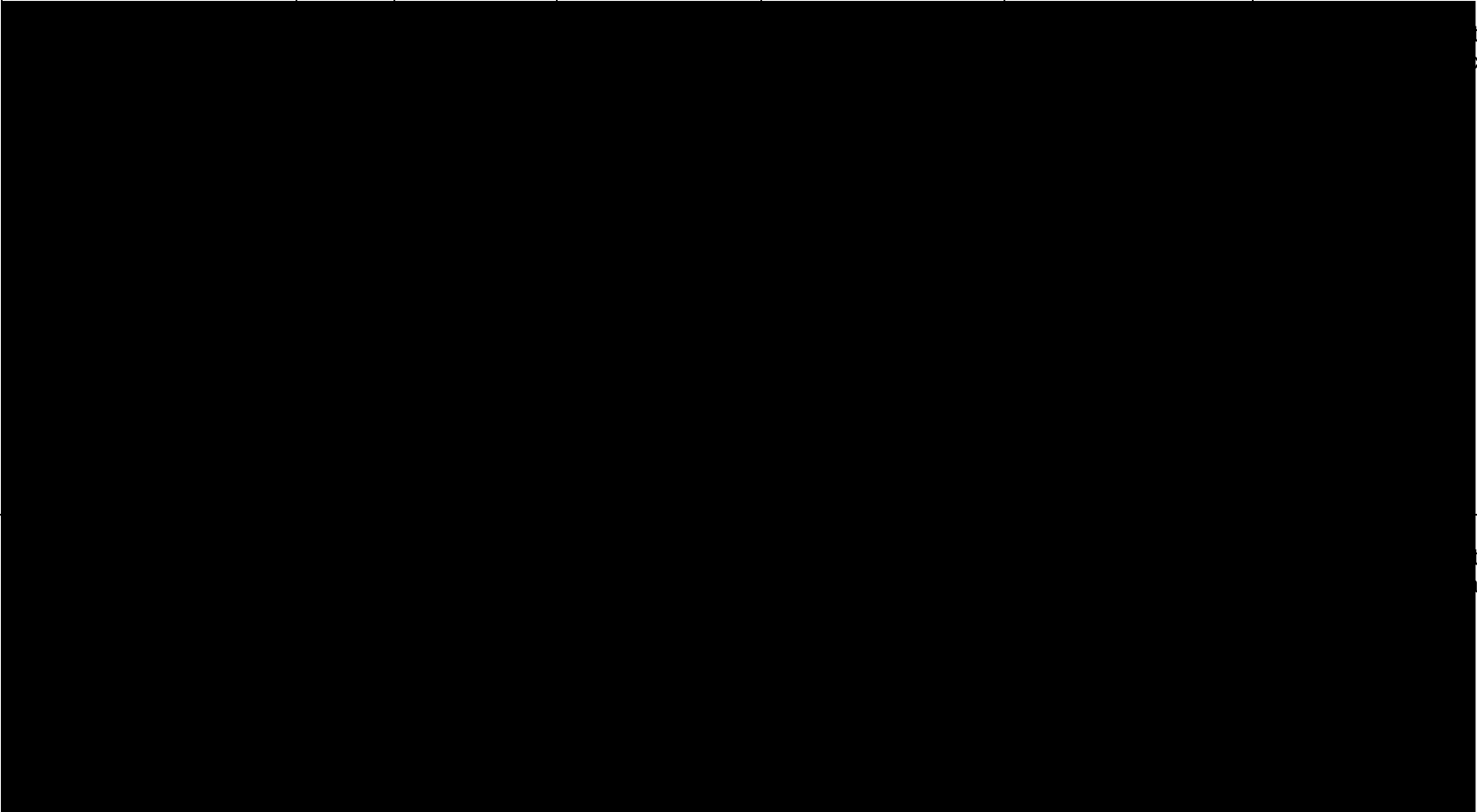
				<p>Green Network.</p> <p>Plantings scheme includes newly created woodland composed of a native species mix.</p>			
	<p>Terrestrial invertebrates – direct loss of habitat including hedgerow H2 and semi improved grassland SI3</p>	Parish	<p>Construction and Operational</p>	<p>Inclusion in the Green Network (on and off site) of additional tree line and hedge planting</p> <p>Retention of grassland habitats along the site boundary.</p> <p>Inclusion of conservation species-rich lawns in the Green Network.</p> <p>Plantings scheme includes newly created woodland composed of a native species mix.</p>	<p>No significant impact/neutral at a Parish level</p>	<p>Areas of dead wood should be retained within the woodland sections</p>	<p>Long term positive impact at Parish level</p>

2, The roundabout onto the A4095 will move 70 m south	The relocation of the Primary Road to the south of the original road alignment does not present a material change to the Ecological Impact Assessment as contained in Environmental Statement	NA	NA	None	NA	None required	No significant impact at any geographic level
3. Introduction of 3 cycle and pedestrian routes on to the A44, one for the Central section and two for the Eastern area of the site, introduced to improve connectivity of this area of the site	Hedgerows – The construction of 3 cycle and pedestrian route onto the A44 will result in a direct loss during the construction phase of small sections of existing hedgerow H8.	Parish	Construction	Retention of most hedgerows on Site with only short sections removed Inclusion in the Green Network of additional tree line and hedge planting Hedgerow species will be native and of local provenance. Appropriate use of lighting during construction.	Long-term, positive impact of medium magnitude on hedgerow habitat significant at a Parish level	Adherence to British standards in relation to trees. Best practice management of hedgerows Adoption of Lighting Strategy.	Long-term, positive impact on hedgerow habitat significant at a Parish level
	Semi improved grassland – Relocation of Primary Road will result in a small reduction in field margin	Parish	Construction	Retention of semi improved grassland habitats along	Long term positive impact of medium magnitude at a Parish level	Non required	Long term positive impact at a Parish level

	semi improved grassland habitat (SI2) associated with hedgerows and arable field margins			<p>the Site boundary.</p> <p>The Green Network includes the creation of the following grassland habitats:</p> <ul style="list-style-type: none"> • conservation species-rich lawns ; • amenity grassland; and • amenity grassland (gardens) 			
	Reptiles – direct loss of habitats including semi improved grassland (SI2), hedgerow (H8)	Parish	Construction	<p>Retention of most hedgerows on Site with only small sections being removed.</p> <p>Retention of semi improved grassland habitats along the Site boundary.</p>	Short Negative permanent impact low magnitude	Preparation of mitigation strategy: translocation of reptile population from construction footprint to newly created receptor site	No negative impact at any geographic level
			Operational	Inclusion in the	Positive permanent	Management of	Long term positive at

				<p>Green Network (on and off site) of additional tree line and hedge planting</p> <p>The Green Network includes the creation of the following grassland habitats:</p> <ul style="list-style-type: none"> • conservation species-rich lawns ; • amenity grassland; and • amenity grassland (gardens) • 	<p>impact magnitude medium</p>	<p>receptor site for reptiles</p>	<p>at Parish level</p>
	<p>Overall breeding bird community – direct loss of habitat including semi improved grassland (SI2) and hedgerow (H8)</p>	<p>Site</p>	<p>Construction</p>	<p>Retention of most of the on-site woodland with only small sections removed along eastern boundary of The</p>	<p>Low short term negative impact at Site level</p>	<p>Site clearance at appropriate time of year to avoid nesting season, or check by ecologist</p>	<p>No negative impact at any geographic level</p>

				<p>Site.</p> <p>Retention of most hedgerows on Site with only small sections being removed.</p>			
		Site	Operational	<p>Green Network tree planting scheme includes; of newly created woodland composed of a native species mix; and scattered and individual trees.</p> <p>Tree species will be native and of local provenance.</p> <p>The Green Network includes the creation of the following grassland habitats:</p> <ul style="list-style-type: none"> • conservation species-rich lawns; • amenity grassland; 	Long term positive impact at Parish level	<p>Adherence to British standards in relation to trees.</p> <p>Best practice management of hedgerows</p> <p>Adoption of Lighting Strategy.</p>	Long term positive impact at Parish level

				and • amenity grassland including gardens			
							

				native species mix; and scattered and individual trees.			
	Dormouse – direct loss of very small sections of habitat including hedgerow H8, severance of commuting route and areas of foraging	District	Construction	Retention of most of the on-site woodland with small areas removed along eastern boundary of the Site. Retention of most hedgerows on Site with only small sections being removed. Appropriate use of lighting during construction.	Short term negative impact of low magnitude through loss of habitat and severance of commuting routes	European Protected Species Derogation Licence	Long term positive impact at District level
			Operational	Appropriate use of lighting during construction. Inclusion in the Green Network (on and off site) of additional tree line and hedge planting. Hedgerow species will be	Long term positive impact at District level	Adherence to British standards in relation to trees. Best practice management of trees and hedgerows Adoption of Lighting Strategy.	Long term positive impact at District level

				<p>native and of local provenance.</p> <p>Creation of arboreal bridges at road junctions within The Site.</p>			
	<p>Bats – direct loss of foraging and commuting habitat including hedgerow H8 and semi improved grassland S12</p>	Parish	Construction	<p>Retention of most of the on-site woodland with small sections removed along eastern boundary of the Site.</p> <p>Retention of most hedgerows on Site with only small sections being removed.</p> <p>Appropriate use of lighting during construction.</p>	<p>Negative impact on roosting bats of significance at site level.</p> <p>No impact on bat activity as a result of direct loss of habitat (minimal woodland and foraging habitat loss).</p> <p>Negative impact on commuting and foraging bats as a result of construction lighting.</p>	<p>Further survey to establish presence/absence of roosts prior to demolition of buildings and removal of trees, and preparation of a mitigation strategy, if required.</p> <p>Adoption of appropriate lighting strategy.</p>	<p>No significant impact at any geographic level.</p>
			Operational	<p>Green Network tree planting scheme includes; newly created woodland composed of a native species mix, providing potential bat tree roosts.</p>	<p>Neutral impact on bat species with low magnitude of significance at The Site level only</p>	<p>Adoption of appropriate lighting strategy</p> <p>Erection of bat boxes to increase roosting opportunities</p>	<p>No significant impact at any geographic level.</p>

				<p>Inclusion in the Green Network (on and off site) of additional tree line and hedge planting.</p> <p>Hedgerow species will be native and of local provenance.</p> <p>Creation of arboreal bridges at road junctions within The Site.</p>			
	<p>Polecat – direct loss of habitat used for foraging and commuting including hedgerow H8 and semi improved grassland SI2</p>	Parish	<p>Construction and Operational</p>	<p>Retention of grassland habitats along the site boundary.</p> <p>Inclusion of conservation species-rich lawns in the Green Network.</p> <p>Plantings scheme includes newly created woodland composed of a native species</p>	<p>No significant impact/neutral at a Parish level</p>	<p>Adoption of traffic calming measures</p>	<p>No significant impact/neutral at a Parish level</p>

				mix.			
	Terrestrial invertebrates – direct loss of habitat including hedgerow H8 and semi improved grassland SI2	Parish	Construction and Operational	<p>Inclusion in the Green Network (on and off site) of additional tree line and hedge planting</p> <p>Retention of grassland habitats along the site boundary.</p> <p>Inclusion of conservation species-rich lawns in the Green Network.</p> <p>Plantings scheme includes newly created woodland composed of a native species mix.</p>	No significant impact/neutral at a Parish level	Areas of dead wood should be retained within the woodland sections	Long term positive impact at Parish level
4. Introduction of a direct cycle and pedestrian route on to Shipton Road for the North Eastern area of the site,	Woodland – direct loss on northern boundary of Site (W1)	Parish	Construction and Operational	Retention of most of the on-site woodland W1 with only small sections removed along the northern	Long term positive impact of medium magnitude at Parish level.	Adherence to British standards in relation to trees. Adoption of Lighting Strategy.	Long-term, positive impact at a Parish level.

<p>introduced to improve connectivity of this area of the site</p>				<p>boundary of the Site.</p> <p>Appropriate use of lighting during construction.</p> <p>Green Network tree planting scheme includes: newly created woodland composed of a native species mix; and scattered and individual trees.</p> <p>Tree species will be native and of local provenance.</p>			
	<p>Semi improved grassland – Relocation of Primary Road will result in a small reduction in field margin semi improved grassland habitat (S11) associated with hedgerows and arable field margins</p>	<p>Parish</p>	<p>Construction and Operational</p>	<p>Retention of semi improved grassland habitats along the Site boundary.</p> <p>The Green Network includes the creation of the following grassland</p>	<p>Long term positive impact of medium magnitude at a Parish level</p>	<p>Non required</p>	<p>Long term positive impact at a Parish level</p>

				<p>habitats:</p> <ul style="list-style-type: none"> • conservation species-rich lawns ; • amenity grassland; and • amenity grassland (gardens) 			
	Reptiles – direct loss of habitats including semi improved grassland (S11), woodland (W1)	Parish	Construction	<p>Retention of most hedgerows on Site with only small sections being removed.</p> <p>Retention of semi improved grassland habitats along the Site boundary.</p>	Short Negative permanent impact low magnitude	Preparation of mitigation strategy: translocation of reptile population from construction footprint to newly created receptor site	No negative impact at any geographic level
			Operational	<p>Inclusion in the Green Network (on and off site) of additional tree line and hedge planting</p> <p>The Green Network includes</p>	Positive permanent impact medium magnitude	Management of receptor site for reptiles	Long term positive at Parish level

				<p>the creation of the following grassland habitats:</p> <ul style="list-style-type: none"> • conservation species-rich lawns ; • amenity grassland; and • amenity grassland (gardens) 			
	Overall breeding bird community – direct loss of small areas habitat including semi improved grassland (SI1) and woodland (W1)	Site	Construction	<p>Retention of most of the on-site woodland with only small sections removed along eastern boundary of The Site.</p> <p>Retention of most hedgerows on Site with only small sections being removed.</p>	Low short term negative impact at Site level	Site clearance at appropriate time of year to avoid nesting season, or check by ecologist	No negative impact at any geographic level

		Site	Operational	<p>Green Network tree planting scheme includes; of newly created woodland composed of a native species mix; and scattered and individual trees.</p> <p>Tree species will be native and of local provenance.</p> <p>The Green Network includes the creation of the following grassland habitats:</p> <ul style="list-style-type: none"> • conservation species-rich lawns; • amenity grassland; and • amenity grassland including gardens 	Long term positive impact at Parish level	<p>Adherence to British standards in relation to trees.</p> <p>Best practice management of hedgerows</p> <p>Adoption of Lighting Strategy.</p>	Long term positive impact at Parish level
--	--	------	-------------	---	---	--	---

	Dormouse – direct loss of	District	Construction	Retention of most	Short term negative	European Protected	Long term positive

	very small sections of habitat including woodland W1, severance of commuting route and areas of foraging			<p>of the on-site woodland with small areas removed along eastern boundary of the Site.</p> <p>Retention of most hedgerows on Site with only small sections being removed.</p> <p>Appropriate use of lighting during construction.</p>	impact of low magnitude through loss of habitat and severance of commuting routes	Species Derogation Licence	impact at District level
			Operational	<p>Appropriate use of lighting during construction.</p> <p>Inclusion in the Green Network (on and off site) of additional tree line and hedge planting.</p> <p>Hedgerow species will be native and of local provenance.</p> <p>Creation of arboreal bridges at road junctions</p>	Long term positive impact at District level	<p>Adherence to British standards in relation to trees.</p> <p>Best practice management of trees and hedgerows</p> <p>Adoption of Lighting Strategy.</p>	Long term positive impact at District level

				within The Site.			
	Bats – direct loss of foraging and commuting habitat including woodland W1 and semi improved grassland S11	Parish	Construction	Retention of most of the on-site woodland with small sections removed along eastern boundary of the Site. Retention of most hedgerows on Site with only small sections being removed. Appropriate use of lighting during construction.	Negative impact on roosting bats of significance at site level. No impact on bat activity as a result of direct loss of habitat (minimal woodland and foraging habitat loss). Negative impact on commuting and foraging bats as a result of construction lighting.	Further survey to establish presence/absence of roosts prior to demolition of buildings and removal of trees, and preparation of a mitigation strategy, if required. Adoption of appropriate lighting strategy.	No significant impact at any geographic level.
			Operational	Green Network tree planting scheme includes; newly created woodland composed of a native species mix, providing potential bat tree roosts. Inclusion in the Green Network (on and off site) of additional tree line and hedge	Neutral impact on bat species with low magnitude of significance at The Site level only	Adoption of appropriate lighting strategy Erection of bat boxes to increase roosting opportunities	No significant impact at any geographic level.

				<p>planting.</p> <p>Hedgerow species will be native and of local provenance.</p> <p>Creation of arboreal bridges at road junctions within The Site.</p>			
	<p>Polecat – direct loss of habitat used for foraging and commuting including woodland W1 and semi improved grassland S11</p>	Parish	Construction and Operational	<p>Retention of grassland habitats along the site boundary.</p> <p>Inclusion of conservation species-rich lawns in the Green Network.</p> <p>Plantings scheme includes newly created woodland composed of a native species mix.</p>	No significant impact/neutral at a Parish level	Adoption of traffic calming measures	No significant impact/neutral at a Parish level
	<p>Terrestrial invertebrates – direct loss of habitat including woodland W1 and semi improved</p>	Parish	Construction and Operational	<p>Inclusion in the Green Network (on and off site) of additional tree</p>	No significant impact/neutral at a Parish level	Areas of dead wood should be retained within the woodland sections	Long term positive impact at Parish level

	grassland SI1			<p>line and hedge planting</p> <p>Retention of grassland habitats along the site boundary.</p> <p>Inclusion of conservation species-rich lawns in the Green Network.</p> <p>Plantings scheme includes newly created woodland composed of a native species mix.</p>			
5. The addition of four pedestrian, or cycle routes north south hedgerows (H1 and H2)	Hedgerows – the construction of 4 pedestrian routes will result in a direct loss of small sections of hedgerows H1 and H2	Parish	Construction and Operational	<p>Retention of most hedgerows on Site with only short sections removed</p> <p>Inclusion in the Green Network of additional tree line and hedge planting</p> <p>Hedgerow</p>	Long-term, positive impact of medium magnitude on hedgerow habitat significant at a Parish level	<p>Adherence to British standards in relation to trees.</p> <p>Best practice management of hedgerows</p> <p>Adoption of Lighting Strategy.</p>	Long-term, positive impact on hedgerow habitat significant at a Parish level

				species will be native and of local provenance. Appropriate use of lighting during construction.			
	Semi improved grassland – The construction of a pedestrian routes will result in a small direct loss of semi improved grassland habitat (SI3) associated with hedgerows H1 and H2	Parish	Construction and Operational	Retention of semi improved grassland habitats along the Site boundary. The Green Network includes the creation of the following grassland habitats: <ul style="list-style-type: none"> • conservation species-rich lawns ; • amenity grassland; and • amenity grassland (gardens) 	Long term positive impact of medium magnitude at a Parish level	Non required	Long term positive impact at a Parish level
	Woodlands – the inclusion of 3-5 pedestrian will						

	reduce the area of proposed new woodland (W3) which will form part of the Bat Corridor						
	Reptiles – direct loss of habitats including semi improved grassland (SI3), hedgerows H1 and H2	Parish	Construction	Retention of most hedgerows on Site with only small sections being removed. Retention of semi improved grassland habitats along the Site boundary.	Short Negative permanent impact low magnitude	Preparation of mitigation strategy: translocation of reptile population from construction footprint to newly created receptor site	No negative impact at any geographic level
	Overall breeding bird community – direct loss of small areas habitat including semi improved grassland (SI3) and small sections of hedgerows H1 and H2	Site	Construction	Retention of most of the on-site woodland with only small sections removed along eastern boundary of The Site. Retention of most hedgerows on Site with only small sections being removed.	Low short term negative impact at Site level	Site clearance at appropriate time of year to avoid nesting season, or check by ecologist	No negative impact at any geographic level
		Site	Operational	Green Network tree planting scheme includes;	Long term positive impact at Parish level	Adherence to British standards in relation to trees.	Long term positive impact at Parish level

				<p>of newly created woodland composed of a native species mix; and scattered and individual trees.</p> <p>Tree species will be native and of local provenance.</p> <p>The Green Network includes the creation of the following grassland habitats:</p> <ul style="list-style-type: none"> • conservation species-rich lawns; • amenity grassland; and • amenity grassland including gardens 		<p>Best practice management of hedgerows</p> <p>Adoption of Lighting Strategy.</p>	
	<div style="background-color: black; height: 20px; width: 100%;"></div>						
	sections of hedgerows in			only small budgets	become	provided,	speed

	Dormouse – direct loss of very small sections of habitat including hedgerows H1 and H2, severance of commuting route and areas of	District	Construction	Retention of most of the on-site woodland with small areas removed along eastern boundary	Short term negative impact of low magnitude through loss of habitat and severance of commuting routes	European Protected Species Derogation Licence	Long term positive impact at District level

	foraging			<p>of the Site.</p> <p>Retention of most hedgerows on Site with only small sections being removed.</p> <p>Appropriate use of lighting during construction.</p>			
			Operational	<p>Appropriate use of lighting during construction.</p> <p>Inclusion in the Green Network (on and off site) of additional tree line and hedge planting.</p> <p>Hedgerow species will be native and of local provenance.</p> <p>Creation of arboreal bridges at road junctions within The Site.</p>	Long term positive impact at District level	<p>Adherence to British standards in relation to trees.</p> <p>Best practice management of trees and hedgerows</p> <p>Adoption of Lighting Strategy.</p>	Long term positive impact at District level
	Bats – direct loss of foraging and commuting habitat including small	Parish	Construction	Retention of most of the on-site woodland with	Negative impact on roosting bats of significance at site	Further survey to establish presence/absence of	No significant impact at any geographic level.


	sections in hedgerows H1 and H2, negative impact of artificial lighting, and semi improved grassland S11			<p>small sections removed along eastern boundary of the Site.</p> <p>Retention of most hedgerows on Site with only small sections being removed.</p> <p>Appropriate use of lighting during construction.</p>	<p>level.</p> <p>No impact on bat activity as a result of direct loss of habitat (minimal woodland and foraging habitat loss).</p> <p>Negative impact on commuting and foraging bats as a result of construction lighting.</p>	<p>roosts prior to demolition of buildings and removal of trees, and preparation of a mitigation strategy, if required.</p> <p>Adoption of appropriate lighting strategy.</p>	
	Polecat – direct loss of habitat used for foraging and commuting including hedgerows H1 and H2 and semi improved grassland SI3	Parish	Construction and Operational	<p>Retention of grassland habitats along the site boundary.</p> <p>Inclusion of conservation species-rich lawns in the Green Network.</p> <p>Plantings scheme includes newly created woodland composed of a native species mix.</p>	No significant impact/neutral at a Parish level	Adoption of traffic calming measures	No significant impact/neutral at a Parish level
	Terrestrial invertebrates –	Parish	Construction	Inclusion in the	No significant	Areas of dead wood	Long term positive

	direct loss of habitat including small sections of hedgerows H1 and H2 and semi improved grassland SI3		and Operational	<p>Green Network (on and off site) of additional tree line and hedge planting</p> <p>Retention of grassland habitats along the site boundary.</p> <p>Inclusion of conservation species-rich lawns in the Green Network.</p> <p>Plantings scheme includes newly created woodland composed of a native species mix.</p>	impact/neutral at a Parish level	should be retained within the woodland sections	impact at Parish level
6. Change in layout for the local centre to reflect both size and character of Woodstock streets and spaces.	The change in layout for the local centre does not present a material change to the Ecological Impact Assessment as contained in Environmental Statement	NA	NA	None		None required	No significant impact at any geographic level
7. Road heading	The relocation of road	Parish	Construction	Retention of most	Long-term, positive	Adherence to British	Long-term, positive

<p>north to the primary school from the local centre moved further west to introduce double frontage.</p>	<p>heading north to primary school will not pass through existing hedgerow H2 and will result in an increase in the amount of retained hedgerow</p>			<p>hedgerows on Site with only short sections removed</p> <p>Inclusion in the Green Network of additional tree line and hedge planting</p> <p>Hedgerow species will be native and of local provenance.</p> <p>Appropriate use of lighting during construction.</p>	<p>impact of medium magnitude on hedgerow habitat significant at a Parish level</p>	<p>standards in relation to trees.</p> <p>Best practice management of hedgerows</p> <p>Adoption of Lighting Strategy.</p>	<p>impact on hedgerow habitat significant at a Parish level</p>
	<p>The relocation of road heading north to primary school will not pass through existing semi improved grassland associated with hedgerow H2 and will result in an increase in the amount of retained semi improved grassland</p>	<p>Parish</p>	<p>Construction</p>	<p>Retention of semi improved grassland habitats along the Site boundary.</p> <p>The Green Network includes the creation of the following grassland habitats:</p> <ul style="list-style-type: none"> • conservation species-rich 	<p>Long term positive impact of medium magnitude at a Parish level</p>	<p>Non required</p>	<p>Long term positive impact at a Parish level</p>

				<p>lawns ;</p> <ul style="list-style-type: none"> • amenity grassland; and • amenity grassland (gardens) 			
8. Care Village has been moved to the West of the local centre.	The change in layout for the local centre does not present a material change to the Ecological Impact Assessment as contained in Environmental Statement	NA	NA	None		None required	No significant impact at any geographic level
9. Area previously designated for the care village has been allocated for Residential development.	The change in position for the care village will result in a reduction in the length of hedgerow H3 to be removed	Parish	Construction and post construction	<p>Retention of most hedgerows on Site with only short sections removed</p> <p>Inclusion in the Green Network of additional tree line and hedge planting</p> <p>Hedgerow species will be native and of local provenance.</p> <p>Appropriate use</p>	Long-term, positive impact of medium magnitude on hedgerow habitat significant at a Parish level	<p>Adherence to British standards in relation to trees.</p> <p>Best practice management of hedgerows</p> <p>Adoption of Lighting Strategy.</p>	Long-term, positive impact on hedgerow habitat significant at a Parish level

				of lighting during construction.			
	Overall breeding bird community – direct loss of small areas hedgerow H3	Site	Construction	Retention of most of the on-site woodland with only small sections removed along eastern boundary of The Site. Retention of most hedgerows on Site with only small sections being removed.	Low short term negative impact at Site level	Site clearance at appropriate time of year to avoid nesting season, or check by ecologist	No negative impact at any geographic level
		Site	Operational	Green Network tree planting scheme includes; of newly created woodland composed of a native species mix; and scattered and individual trees. Tree species will be native and of local provenance. The Green Network includes the creation of	Long term positive impact at Parish level	Adherence to British standards in relation to trees. Best practice management of hedgerows Adoption of Lighting Strategy.	Long term positive impact at Parish level

				<p>the following grassland habitats:</p> <ul style="list-style-type: none">• conservation species-rich lawns;• amenity grassland; and• amenity grassland including gardens			
							

being removed.

	Dormouse – direct loss of very small section of habitat including hedgerow H3	District	Construction	<p>Retention of most of the on-site woodland with small areas removed along eastern boundary of the Site.</p> <p>Retention of most hedgerows on Site with only small sections being removed.</p> <p>Appropriate use of lighting during construction.</p>	Short term negative impact of low magnitude through loss of habitat and severance of commuting routes	European Protected Species Derogation Licence	Long term positive impact at District level
			Operational	Appropriate use of lighting during	Long term positive impact at District	Adherence to British standards in relation	Long term positive impact at District

				<p>construction.</p> <p>Inclusion in the Green Network (on and off site) of additional tree line and hedge planting.</p> <p>Hedgerow species will be native and of local provenance.</p> <p>Creation of arboreal bridges at road junctions within The Site.</p>	level	<p>to trees.</p> <p>Best practice management of trees and hedgerows</p> <p>Adoption of Lighting Strategy.</p>	level
	<p>Bats – direct loss of foraging and commuting habitat including small section in hedgerow H3</p>	Parish	Construction	<p>Retention of most of the on-site woodland with small sections removed along eastern boundary of the Site.</p> <p>Retention of most hedgerows on Site with only small sections being removed.</p> <p>Appropriate use of lighting during construction.</p>	<p>Negative impact on roosting bats of significance at site level.</p> <p>No impact on bat activity as a result of direct loss of habitat (minimal woodland and foraging habitat loss).</p> <p>Negative impact on commuting and foraging bats as a result of construction lighting.</p>	<p>Further survey to establish presence/absence of roosts prior to demolition of buildings and removal of trees, and preparation of a mitigation strategy, if required.</p> <p>Adoption of appropriate lighting strategy.</p>	<p>No significant impact at any geographic level.</p>


	<p>Polecat – direct loss of habitat used for foraging and commuting including hedgerow H3</p>	<p>Parish</p>	<p>Construction and Operational</p>	<p>Retention of grassland habitats along the site boundary.</p> <p>Inclusion of conservation species-rich lawns in the Green Network.</p> <p>Plantings scheme includes newly created woodland composed of a native species mix.</p>	<p>No significant impact/neutral at a Parish level</p>	<p>Adoption of traffic calming measures</p>	<p>No significant impact/neutral at a Parish level</p>

	Terrestrial invertebrates – direct loss of habitat including small section of hedgerow H3	Parish	Construction and Operational	<p>Inclusion in the Green Network (on and off site) of additional tree line and hedge planting</p> <p>Retention of grassland habitats along the site boundary.</p> <p>Inclusion of conservation species-rich lawns in the Green Network.</p> <p>Plantings scheme includes newly created woodland composed of a native species mix.</p>	No significant impact/neutral at a Parish level	Areas of dead wood should be retained within the woodland sections	Long term positive impact at Parish level
10. Increase in sports provision as a use for the area of green space over the archaeological remains north of the SAM (to meet	Grasslands – The increase in sports provision will result in a small reduction of proposed new planting of amenity/conservation grassland	Parish	Construction	Creation of amenity grassland	Long term positive impact of medium magnitude at a Parish level	None required	Long term positive impact at a Parish level

Cherwell District Council sports provision standards).							
11. Allotments to the north eastern area of the site.	Grasslands – The provision of Green Square will result in an increase in the amenity/conservation grassland located within the Site	Parish	Construction	Creation of conservation species-rich lawns	Long term positive impact of medium magnitude at a Parish level	None required	Long term positive impact at a Parish level
12. Green Corridor introduced as a form of landscape and linkage from the SAM Green space and the new Green square	Grasslands – The provision of Green Corridor will result in an increase in the amenity/conservation grassland located within the Site	Parish	Construction	Creation of the following grassland habitats: <ul style="list-style-type: none"> • conservation species-rich lawns • amenity grassland 	Long term positive impact of medium magnitude at a Parish level	None required	Long term positive impact at a Parish level
13. Enhancement of the trail around the edge of the site, which will accommodate a cycle, pedestrian route and adventure trail.	Development of trail will reduce the area of proposed amenity/conservation grassland to be planted	Parish	Construction and Operation	Retention of semi improved grassland habitats along the Site boundary. The Green Network includes the creation of the following grassland	Long term positive impact of medium magnitude at a Parish level	Non required	Long term positive impact at a Parish level

				<p>habitats:</p> <ul style="list-style-type: none"> • conservation species-rich lawns ; • amenity grassland; and • amenity grassland (gardens) 			
14. Additional route through the East West hedgerow, link from phase 1 to the care village.	The additional vehicular route through the East West hedgerow (H3) will result in a direct loss of hedgerow habitat	Parish	Construction and post construction	<p>Retention of most hedgerows on Site with only short sections removed</p> <p>Inclusion in the Green Network of additional tree line and hedge planting</p> <p>Hedgerow species will be native and of local provenance.</p> <p>Appropriate use of lighting during construction.</p>	Long-term, positive impact of medium magnitude on hedgerow habitat significant at a Parish level	<p>Adherence to British standards in relation to trees.</p> <p>Best practice management of hedgerows</p> <p>Adoption of Lighting Strategy.</p>	Long-term, positive impact on hedgerow habitat significant at a Parish level
	Overall breeding bird	Site	Construction	Retention of most	Low short term	Site clearance at	No negative impact

	community – direct loss of small areas hedgerow H3			<p>of the on-site woodland with only small sections removed along eastern boundary of The Site.</p> <p>Retention of most hedgerows on Site with only small sections being removed.</p>	negative impact at Site level	appropriate time of year to avoid nesting season, or check by ecologist	at any geographic level
		Site	Operational	<p>Green Network tree planting scheme includes; of newly created woodland composed of a native species mix; and scattered and individual trees.</p> <p>Tree species will be native and of local provenance.</p> <p>The Green Network includes the creation of the following grassland habitats:</p>	Long term positive impact at Parish level	<p>Adherence to British standards in relation to trees.</p> <p>Best practice management of hedgerows</p> <p>Adoption of Lighting Strategy.</p>	Long term positive impact at Parish level

				<ul style="list-style-type: none">• conservation species-rich lawns;• amenity grassland; and• amenity grassland including gardens			
							

				Green Network tree planting scheme includes; newly created woodland composed of a native species mix; and scattered and individual trees.	killed through traffic collision.		
	Dormouse – direct loss of very small section of habitat including hedgerow H3	District	Construction	Retention of most of the on-site woodland with small areas removed along eastern boundary of the Site. Retention of most hedgerows on Site with only small sections being removed. Appropriate use of lighting during construction.	Short term negative impact of low magnitude through loss of habitat and severance of commuting routes	European Protected Species Derogation Licence	Long term positive impact at District level
			Operational	Appropriate use of lighting during construction. Inclusion in the Green Network	Long term positive impact at District level	Adherence to British standards in relation to trees. Best practice management of trees	Long term positive impact at District level

				<p>(on and off site) of additional tree line and hedge planting.</p> <p>Hedgerow species will be native and of local provenance.</p> <p>Creation of arboreal bridges at road junctions within The Site.</p>		<p>and hedgerows</p> <p>Adoption of Lighting Strategy.</p>	
	<p>Bats – direct loss of foraging and commuting habitat including small section in hedgerow H3</p>	Parish	Construction	<p>Retention of most of the on-site woodland with small sections removed along eastern boundary of the Site.</p> <p>Retention of most hedgerows on Site with only small sections being removed.</p> <p>Appropriate use of lighting during construction.</p>	<p>Negative impact on roosting bats of significance at site level.</p> <p>No impact on bat activity as a result of direct loss of habitat (minimal woodland and foraging habitat loss).</p> <p>Negative impact on commuting and foraging bats as a result of construction lighting.</p>	<p>Further survey to establish presence/absence of roosts prior to demolition of buildings and removal of trees, and preparation of a mitigation strategy, if required.</p> <p>Adoption of appropriate lighting strategy.</p>	<p>No significant impact at any geographic level.</p>

				Green Network tree planting scheme includes; newly created woodland composed of a native species mix; and scattered and individual trees.	killed through traffic collision.		
	Polecat – direct loss of habitat used for foraging and commuting including hedgerow H3	Parish	Construction and Operational	Retention of grassland habitats along the site boundary. Inclusion of conservation species-rich lawns in the Green Network. Plantings scheme includes newly created woodland composed of a native species mix.	No significant impact/neutral at a Parish level	Adoption of traffic calming measures	No significant impact/neutral at a Parish level
	Terrestrial invertebrates – direct loss of habitat including small section of hedgerow H3	Parish	Construction and Operational	Inclusion in the Green Network (on and off site) of additional tree	No significant impact/neutral at a Parish level	Areas of dead wood should be retained within the woodland sections	Long term positive impact at Parish level

				<p>line and hedge planting</p> <p>Retention of grassland habitats along the site boundary.</p> <p>Inclusion of conservation species-rich lawns in the Green Network.</p> <p>Plantings scheme includes newly created woodland composed of a native species mix.</p>			
--	--	--	--	--	--	--	--