

# Elmsbrook Signage

# LOCATION A/B

## PLANT SCHEDULE - BICESTER ECO-TOWN SOUTH FRONTAGE (AS PER HYDER SCHEDULE UA001881-701-1102-06. PLEASE NOTE SIZE INCREASE OF QUERCUS ROBUR FASTIGIATA FROM HYDER SCHEDULE)

Trees	Root condition	Height	Breaks	Transplanted	Girth	Form	Qty. No.
Acer campestre	Bare Root	250-300cm	5	3x	8-10cm	Feathered	3
Malus domestica 'Bramley's Seedling'	Bare Root	175-200cm	3	2x		Half-Standard	2
Malus domestica 'Cox's Orange Pippin'	Bare Root	175-200cm	3	2x		Half-Standard	1
Malus domestica 'Discovery'	Bare Root	175-200cm	3	2x		Half-Standard	2
Malus domestica 'Bicester seedling'	Bare Root	175-200cm	3	2x		Half-Standard	1
Prunus avium	Bare Root	200-250cm	5	2x		Feathered	3
Prunus domestica 'Victoria'	Bare Root	175-200cm	3	2x		Half-Standard	1
Pyrus communis 'Beurre Hardy'	Bare Root	175-200cm	3	2x		Half-Standard	1
Pyrus communis 'Conference'	Bare Root	175-200cm	3	2x		Half-Standard	1
Pyrus communis 'Doyenne du Comice'	Bare Root	175-200cm	3	2x		Half-Standard	2
Quercus robur Fastigiata	Root Ball	min 450cm	3	3x	20-25cm	Semi Mature	6

Native Hedge Mix (Total Area TBCm2)	Root condition	Height/Spread/Age @ Planting	%
Crataegus monogyna	Bare Root	40-60cm 1+1 TRA min. 3 breaks	40
Cornus sanguinea	Bare Root	40-60cm 1+1 TRA min. 3 breaks	20
Corylus avellana	Bare Root	40-60cm 1+2 TRA min. 3 breaks	4
Ilex aquifolium	Container	40-60cm 2L leader with laterals	5
Ligustrum vulgare	Bare Root	60-80cm 1+1 TRA min. 4 branches	5
Prunus spinosa	Bare Root	40-60cm 1+1 TRA min. 3 breaks	12
Rosa arvensis	Bare Root	50-60cm 1+1 Branched	4
Rosa canina agg	Bare Root	60-80cm 1+1 Branched	4
Sambucus nigra	Bare Root	40-60cm 1+0 Branched	2
Viburnum lantana	Bare Root	40-60cm 1+0 Branched	2
Viburnum opulus	Bare Root	40-60cm 1+1 Branched	2

Native Hedge Mix planted to infill gaps in translocated hedge. To be planted at specified percentage.

### Grass Turf Lawn Oversown with Wildflower Mix (Total Area 1010m<sup>2</sup>)


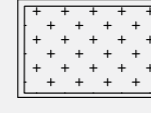

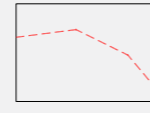
Turf by Rolawn or equivalent  
Wildflower seed by Emorsgate: EM1 – basic general purpose meadow mixture or equivalent. Sown @ 4g/m<sup>2</sup>

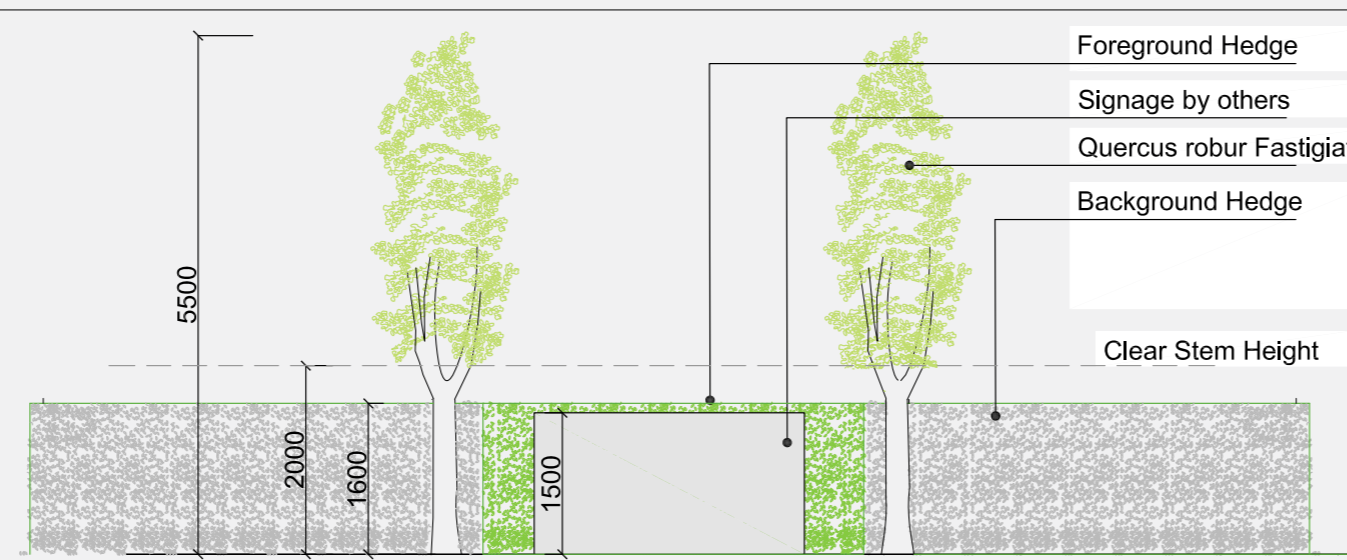
### NEW Hedging (30 linear metres)

Prunus lucitanica	Instant Hedge Unit @ 1600mmH x 1000mmL x 400mmD	Qty. No.
		30

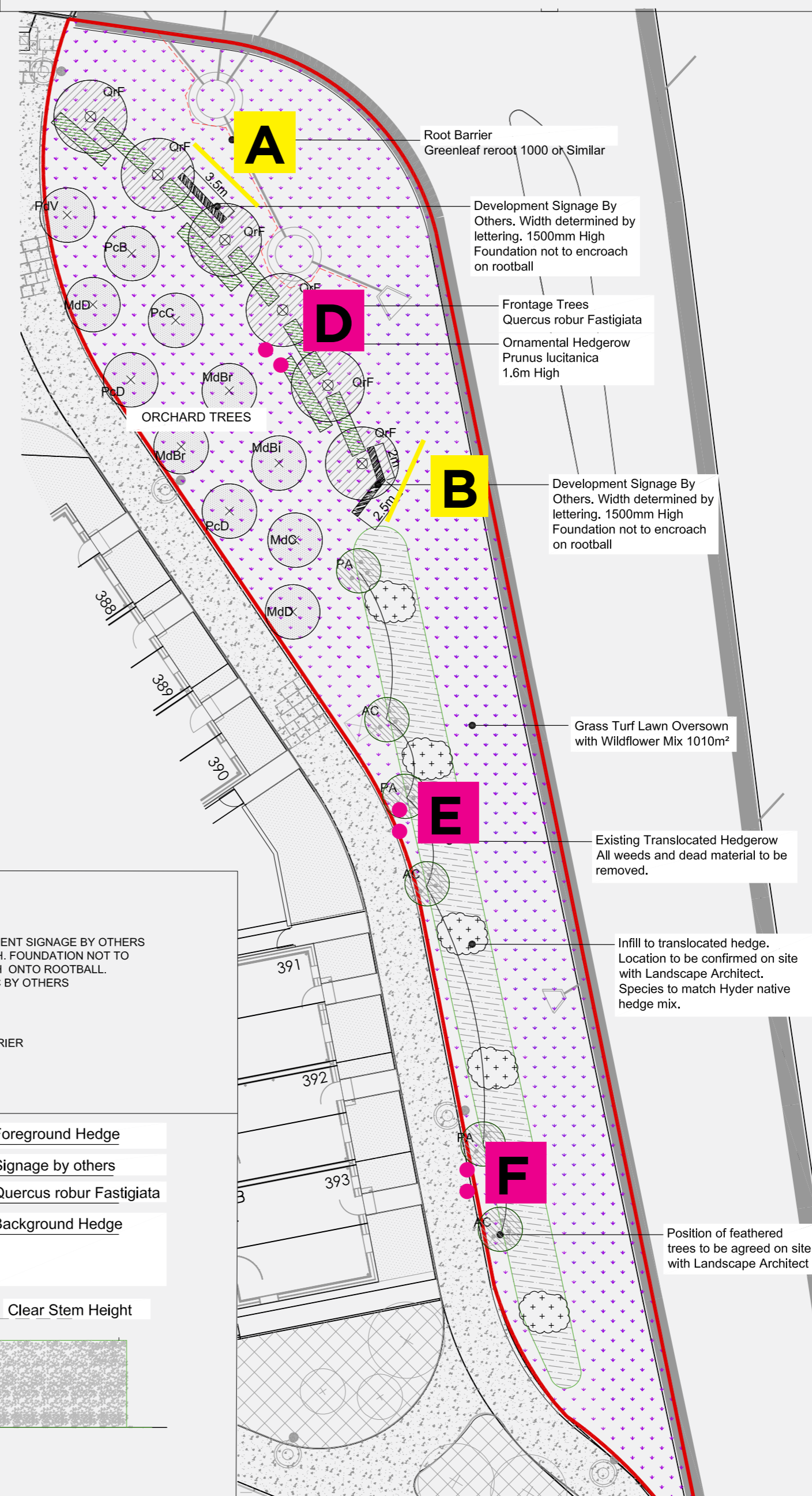
## KEY

-  BOUNDARY FOR FRONTAGE DEVELOPMENT
-  QUERCUS ROBUR FASTIGIATA SIZE INCREASE FROM HYDER PLANNING DRAWING 701-929-04 FROM 16-18 GIRTH TO 20-25
-  ORCHARD TREES SIZE AND SPECIES AS HYDER PLANNING DRAWING 701-929-04 AS SCHEDULE ABOVE
-  FEATHERED TREES SIZE AND SPECIES AS HYDER PLANNING DRAWING 701-929-04 AS SCHEDULE ABOVE
-  TURF LAWN OVERSOWN WITH WILDFLOWER MIX SEE HYDER PERIMETER PLANNING DRAWING 701-929-04
-  ORNAMENTAL HEDGE PRUNUS LUCITANICA 1.6M HIGH

-  EXISTING TRANSLOCATED HEDGEROW AS PER HYDER PERIMETER PLANNING DRAWING 701-929-04
-  NATIVE HEDGE INFILL TO TRANSLOCATED HEDGE. LOCATION TO BE CONFIRMED ON SITE WITH LANDSCAPE ARCHITECT.
-  DEVELOPMENT SIGNAGE BY OTHERS 1500mm HIGH. FOUNDATION NOT TO ENCR OACH ON TO ROOTBALL. WIDTH TBC BY OTHERS
-  ROOT BARRIER



Indicative Elevation of Ornamental Hedging with Development Signage and Column Oaks



All dimensions to be verified on site. Figured dimensions to take precedence to those scaled. Any areas indicated on this drawing are for guidance only, no responsibility is taken for their accuracy.  
This drawing is the property of Applied Landscape Design Limited. Copyright is reserved by them and the drawing is based on the condition that it is not copied, reproduced, altered or disclosed to any unauthorized person, either wholly or in part without the written consent in writing of Applied Landscape Design Limited.

© 2014 Applied Landscape Design Limited. All rights reserved.

**CDM/H&S:**  
CDM RISKS  
The works illustrated on this drawing have been reviewed against the Design CDM Risk Register and significant risks are noted as:  
Construction:  
• Working in close proximity to highway  
Maintenance:  
• Working in close proximity to highway  
• Tree Hedge Pruning  
Demolition:  
• Working in close proximity to highway

**NOTES / KEY:**  
NOTE: SIGNAGE TO BE REMOVED WITH MARKETING SUITE

REFERENCE DRAWINGS/DOCUMENTS

Ref No.	Description
701-1102-06	Infrastructure Planting Schedule by HYDER
701-929-04	Perimeter Planting Plan by HYDER

REVISIONS

no.	issued	date
P02	For Planning	23.01.15
P01	Information	05.12.14

CLIENT:

A2DOMINION		
------------	--	--

LANDSCAPE ARCHITECT:  
**ALD** applied landscape design  
The Threshing Barn, Bignor Park, Bicester, Oxfordshire OX26 1TD  
Tel: 01869 249776  
Fax: 01869 327513  
Email: mail@aldlandscape.co.uk

PROJECT:  
**BICESTER ECO TOWN EXEMPLAR SITE**

DRAWING TITLE:  
**SOUTH FRONTAGE SOFT LANDSCAPE PLAN**

drawn: AF	checked: OM
scale: 1:150 @A1	date: 05.12.2014
status: Planning	sheet file ref: ALD654_PLbase-Hoarding
PROJECT NO. ALD654	DRAWING NUMBER: PL401
	REVISION: P02

ORIGINAL A1 SIZE SHEET

# LOCATION C

## PLANT SCHEDULE - BICESTER ECO-TOWN NORTH FRONTAGE (AS PER HYDER SCHEDULE UA001881-701-1102-06. PLEASE NOTE SIZE INCREASE OF QUERCUS ROBUR FASTIGIATA FROM HYDER SCHEDULE)

Trees	Root condition	Height	Breaks	Transplanted	Girth	Form	Qty. No.
Acer campestre	Bare Root	250-300cm	5	3x	8-10cm	Feathered	1
Quercus robur	Bare Root	175-200cm	5	2x		Feathered	2
Quercus robur Fastigiata	Root Ball	min 450cm	3	3x	20-25cm	Semi Mature	2

Native Hedge Mix (Total Area 200m2)	Root condition	Height/Spread/Age @ Planting	%
Crataegus monogyna	Bare Root	160cm 1+1 TRA min. 3 breaks	40
Cornus sanguinea	Bare Root	160cm 1+1 TRA min. 3 breaks	20
Corylus avellana	Bare Root	160cm 1+2 TRA min. 3 breaks	4
Ilex aquifolium	Container	160cm 2L leader with laterals	5
Ligustrum vulgare	Bare Root	160cm 1+1 TRA min. 4 branches	5
Prunus spinosa	Bare Root	160cm 1+1 TRA min. 3 breaks	12
Rosa arvensis	Bare Root	160cm 1+1 Branched	4
Rosa canina agg	Bare Root	160cm 1+1 Branched	4
Sambucus nigra	Bare Root	160cm 1+0 Branched	2
Viburnum lantana	Bare Root	160cm 1+0 Branched	2
Viburnum opulus	Bare Root	160cm 1+1 Branched	2

Grass Turf Lawn Oversown with Wildflower Mix. (Total Area 140m<sup>2</sup>)

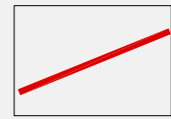
Turf by Rolawn or equivalent

Wildflower seed by Emorsgate: EM1 – basic general purpose meadow mixture or equivalent. Sown @ 4g/m<sup>2</sup>

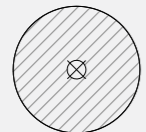
NEW Hedging (12 linear metres) Form

Buxus sempervirens Instant Hedge Planted and Maintained at 600mm Height

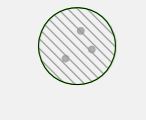
### KEY



BOUNDARY FOR FRONTAGE DEVELOPMENT



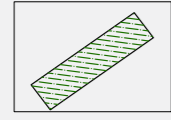
QUERCUS ROBUR FASTIGIATA SIZE INCREASE FROM HYDER PLANNING DRAWING 701-929-04 FROM 16-18 GIRTH TO 20-25



FEATHERED TREES SIZE AND SPECIES AS HYDER PLANNING DRAWING 701-929-04 AS SCHEDULE



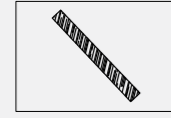
TURF LAWN OVERSOWN WITH WILDFLOWER MIX SEE HYDER PERIMETER PLANNING DRAWING 701-929-04



BOX HEDGE

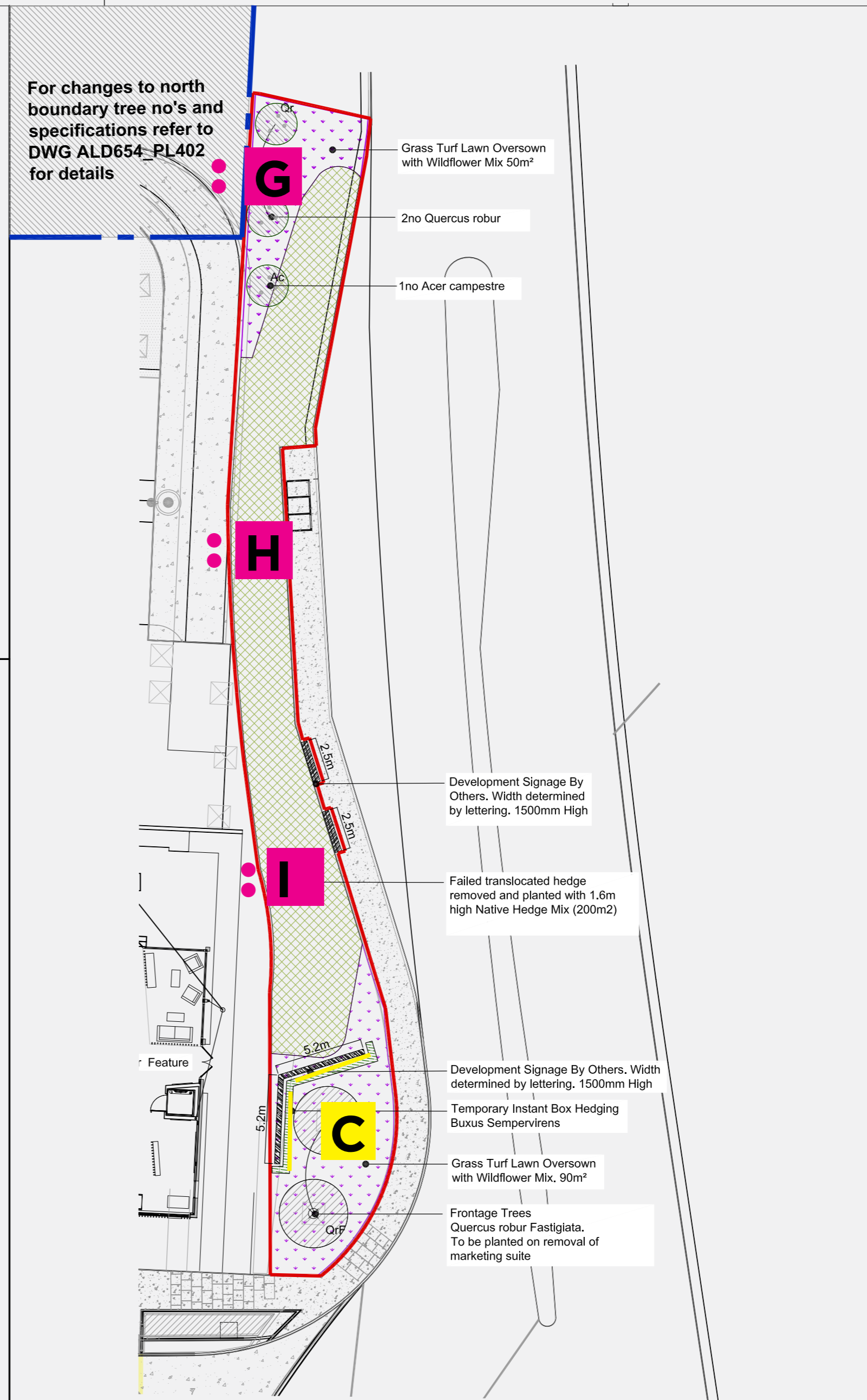


NATIVE HEDGE MIX



DEVELOPMENT SIGNAGE BY OTHERS 1500m HIGH. WIDTH TBC BY OTHERS

For changes to north boundary tree no's and specifications refer to DWG ALD654\_PL402 for details



Grass Turf Lawn Oversown with Wildflower Mix 50m<sup>2</sup>

2no Quercus robur

1no Acer campestre

Development Signage By Others. Width determined by lettering. 1500mm High

Failed translocated hedge removed and planted with 1.6m high Native Hedge Mix (200m2)

Development Signage By Others. Width determined by lettering. 1500mm High

Temporary Instant Box Hedging Buxus Sempervirens

Grass Turf Lawn Oversown with Wildflower Mix. 90m<sup>2</sup>

Frontage Trees Quercus robur Fastigiata. To be planted on removal of marketing suite

All dimensions to be verified on site. Figured dimensions to take precedence to those scaled. Any areas indicated on this drawing are for guidance only, no responsibility is taken for their accuracy.  
This drawing is the property of Applied Landscape Design Limited. Copyright is reserved by them and the drawing is issued on the condition that it is not copied, reproduced, altered or disclosed to any unauthorized person, either wholly or in part without the written consent in writing of Applied Landscape Design Limited.

© 2014 Applied Landscape Design Limited. All rights reserved.

#### CDM/H&S:

The works illustrated on this drawing have been reviewed against the Design CDM Risk Register and significant risks are noted as:

Construction:

- Working in close proximity to highway

Maintenance:

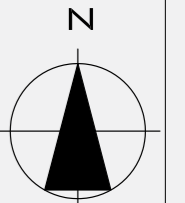
- Working in close proximity to highway
- Tree Hedge Pruning

Demolition:

- Working in close proximity to highway

#### NOTES / KEY:

NOTE: SIGNAGE TO BE REMOVED WITH MARKETING SUITE



#### REFERENCE DRAWINGS/DOCUMENTS

701-1102-06	Infrastructure Planting Schedule by HYDER
701-929-04	Perimeter Planting Plan by HYDER

#### REVISIONS

P02	Planning	23.01.15
P01	Information	05.12.14

no. issued date

#### CLIENT:

A2DOMINION

#### LANDSCAPE ARCHITECT:



#### PROJECT:

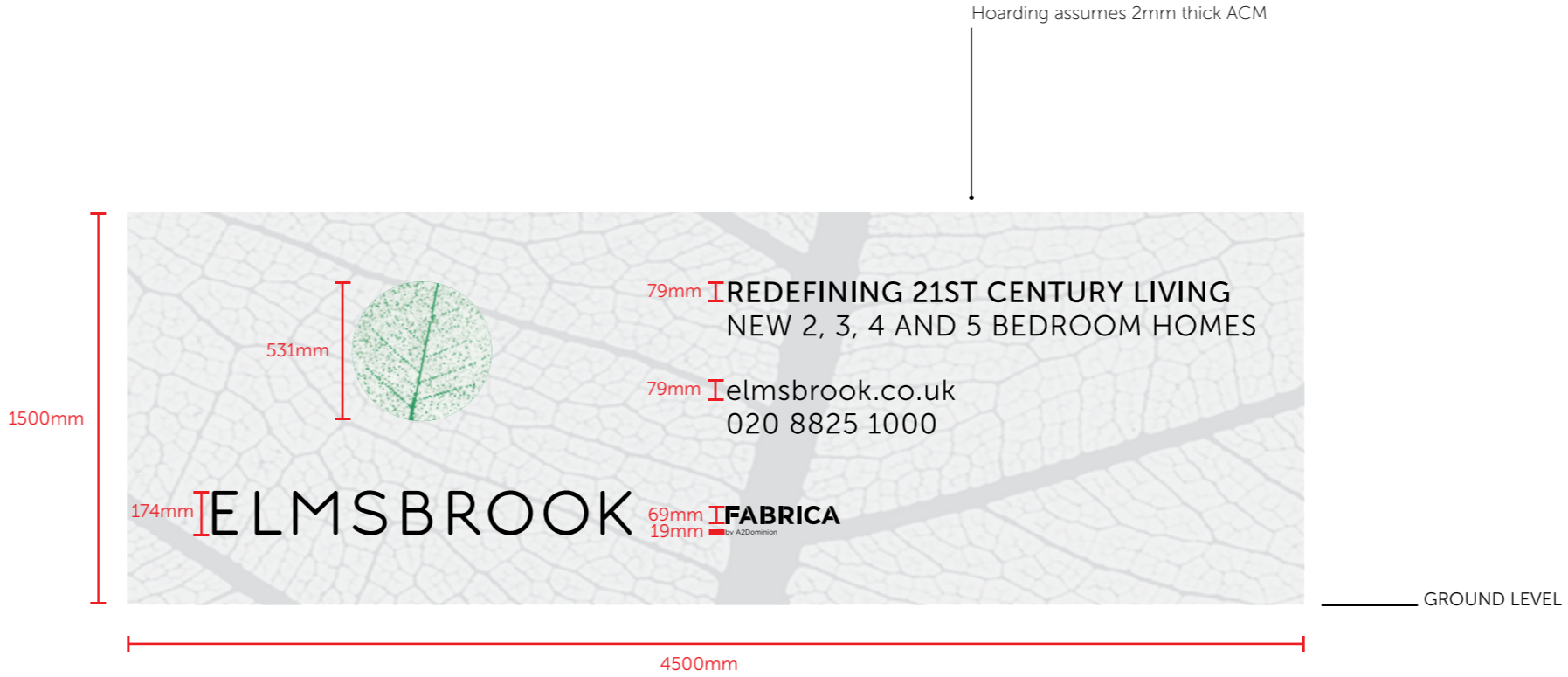
BICESTER ECO TOWN EXEMPLAR SITE

#### DRAWING TITLE:

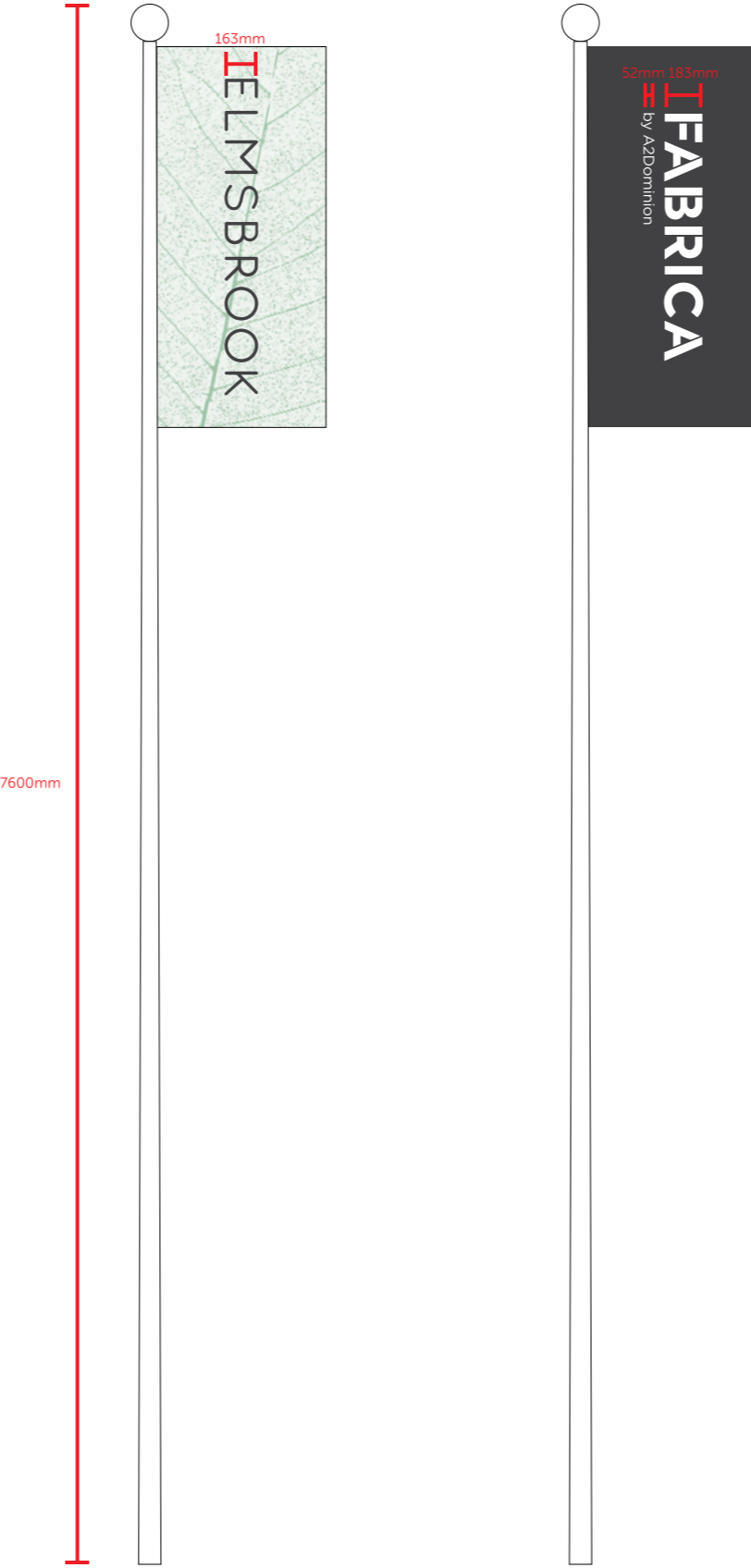
NORTH FRONTAGE  
SOFT LANDSCAPE PLAN

drawn: AF	checked: OM
scale: 1:150 @A1	date: 05.12.2014
status: Planning	xref file ref: ALD654_PLbase-Hoarding
PROJECT NO. ALD654	DRAWING NUMBER: PL402
	REVISION: P02

ORIGINAL A1 SIZE SHEET







Thank you