

revisions

no.	description	date	initial	check
P01	INITIAL ISSUE	26.11.14	NLC	NLC
P02	ADJUSTED IN LINE WITH REVISED FLOOR PLANS; LEVELS AMENDED; MATERIAL KEY ADDED; ISSUED FOR COORDINATION MEETING	18.12.14	NLC	NLC
P03	TRUE LEVELS ADDED; WINDOWS OMITTED; LIVING WALL ADDED; SIGNAGE AMENDED; ISSUED FOR APPROVAL	15.01.15	NLC	NLC
P04	SIGNAGE AMENDED	30.01.15	NLC	NLC

notes

DO NOT SCALE FROM THIS DRAWING
DRAWING SUBJECT TO COPYRIGHT ACT

NTC designs
 NTC designs Ltd.
 3 Hastings Close
 Stevenage
 SG1 2JG
 p: 07748610789
 e: ntcdesignsLtd@gmail.com

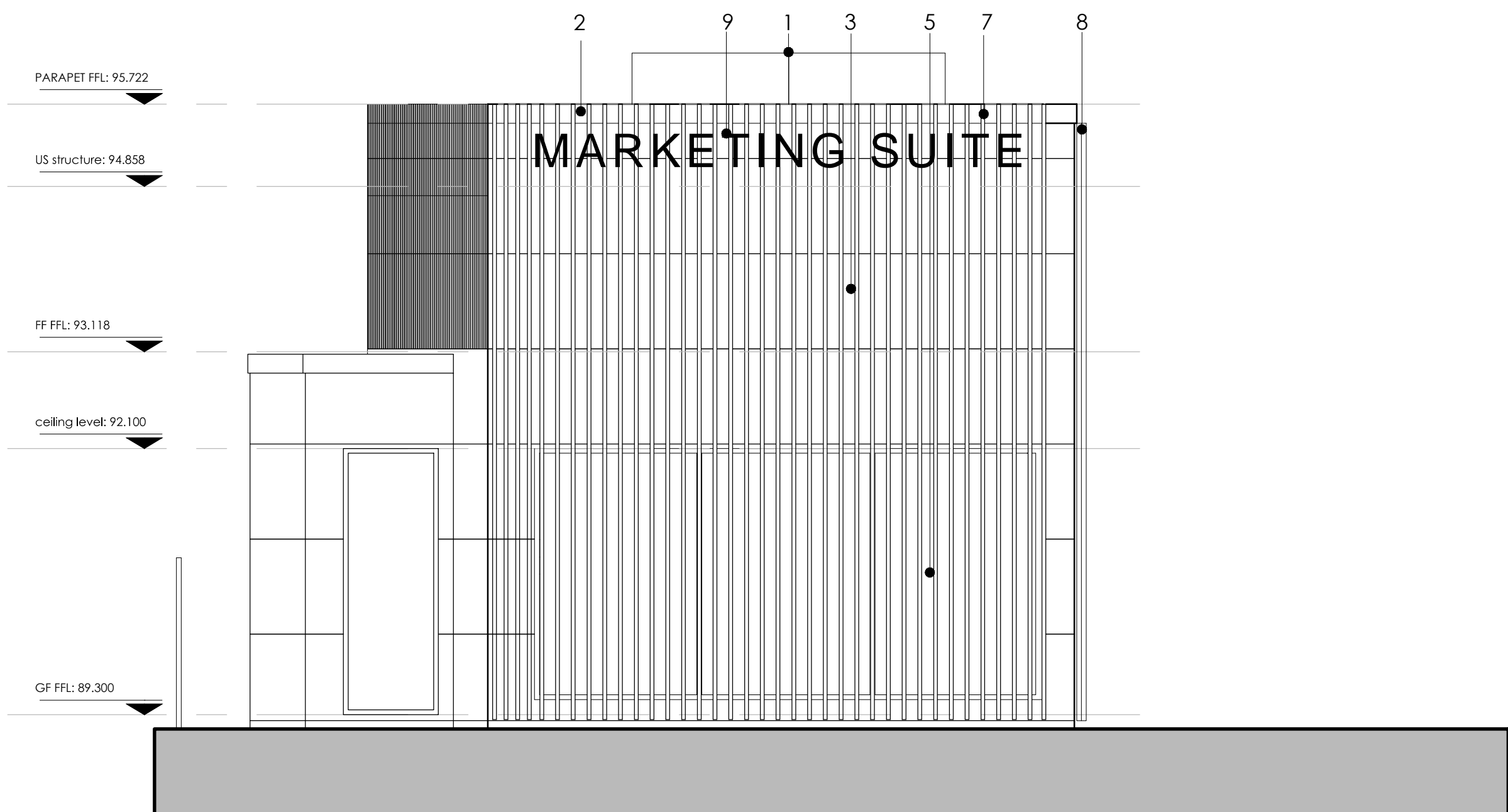
client
OCTINK

project
A2D _ BICESTER ECOTOWN

drawing
PROPOSED SOUTH ELEVATION

scales	date drawn	drawn by	
1:50 @ A3	26.11.14	TC	
1 check date	checked by	2 check date	checked by
26.11.14	NLC	26.11.14	NLC

drawing no. **BET_A_0021** revision **P04**



MATERIALS KEY:

1. SOLAR PV PANELS ON ROOF BEYOND
2. PPC ALUMINUM PROFILED COPING
3. KINGSPAN KS1000 FL CLADDING RAL 9003
4. ALUMINIUM PPC FULLY GLAZED DOUBLE WING DOOR AUTO OPENING RAL 9005
5. ALUMINIUM PPC FULLY GLAZED WINDOW ELEMENTS FRAME RAL 9005
6. ALUMINIUM PPC OBSCURE GLAZED WINDOW ELEMENTS FRAME RAL 9005
7. VERTICAL TIMBER CLADDING
8. LIVING WALL
9. SIGNAGE - ALUMINIUM FRET CUT LETTERS - BACKLIT