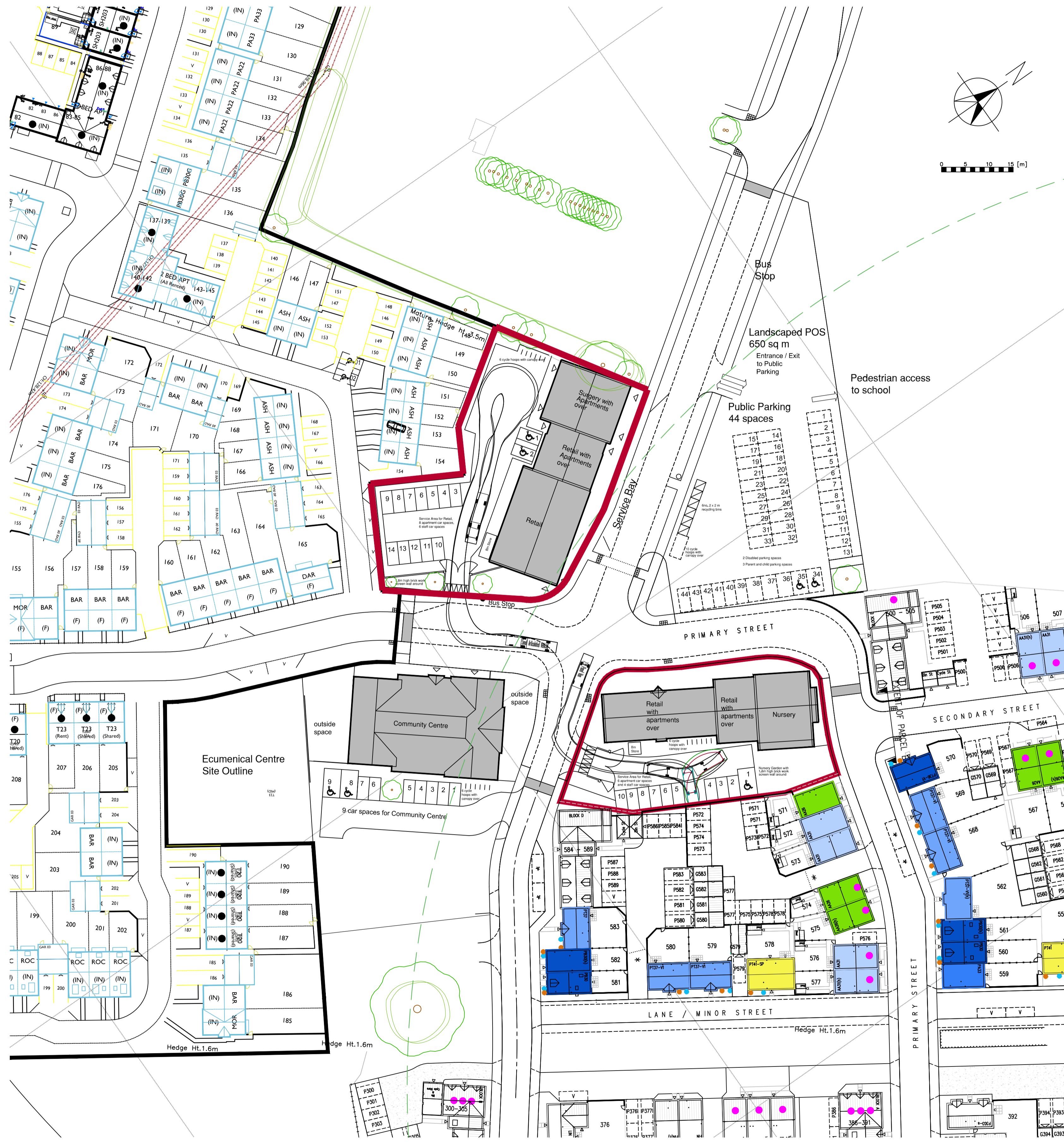


IMPORTANT
 THE COPYRIGHTS TO THE DESIGN ON THIS DRAWING REMAINS THE PROPERTY OF THE ARCHITECTS. THE CONTRACTOR, SUB-CONTRACTORS AND SUPPLIERS MUST VERIFY ALL DIMENSIONS, LEVELS, PLUMB HEIGHTS, STEPS & OPENINGS ON SITE BEFORE COMMENCING SHOP DRAWINGS AND/OR THE FULL REQUIREMENTS OF MUNICIPAL AND/OR OTHER LOCAL AUTHORITIES MUST BE ADHERED TO.



- K: 23Sept15: Road and pavement lines rationalised.
- J: 26Aug15: Recycling area re-located to Public parking area, additional public parking spaces omitted. Red boundary line adjusted.
- H: 24Aug15: Spine road altered. Community centre re-aligned. Nursery footprint updated. Recycling area re-planned. Public parking adjusted. Bollards removed
- G: 13July15: Tracking plans added.
- F: 12July15: Gates into Surgery Service Yard repositioned.
- E: 12July15: Spine road altered. Building footprints adjusted to suit.
- D: 10Mar15: Building footprints adjusted; roadways adjusted to suit.
- C: 17Oct14: Nursery noted.
- B: 07Oct14: Indicative planting added.
- A: 03Oct14: Notation adjustments.

Rev.	Date	Revision

ABACUS
 CHARTERED ARCHITECTS LLP
 26 VICTORIA ST
 HOCKLEY
 BIRMINGHAM B1 3PE
 TEL. 0121 608 3700 FAX. 0121 608 3003
 e-mail : email@abacusarchitects.co.uk

Development
**Longford Park
 Local Centre**

Title
**Planning Application 2:
 Surgery, Retail, Nursery and
 Apartment Buildings**

Scale 1:500 @ A1 size
 Date Sept' 2014 Drawn RJJ

Drwg. no 1419 | 101 | Rev K