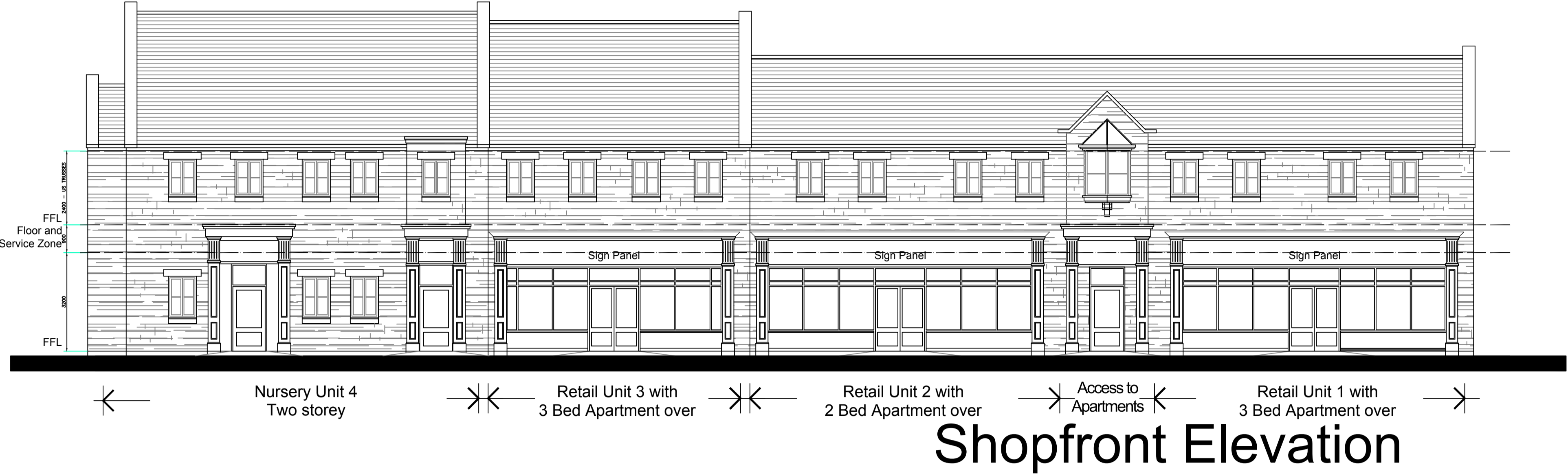


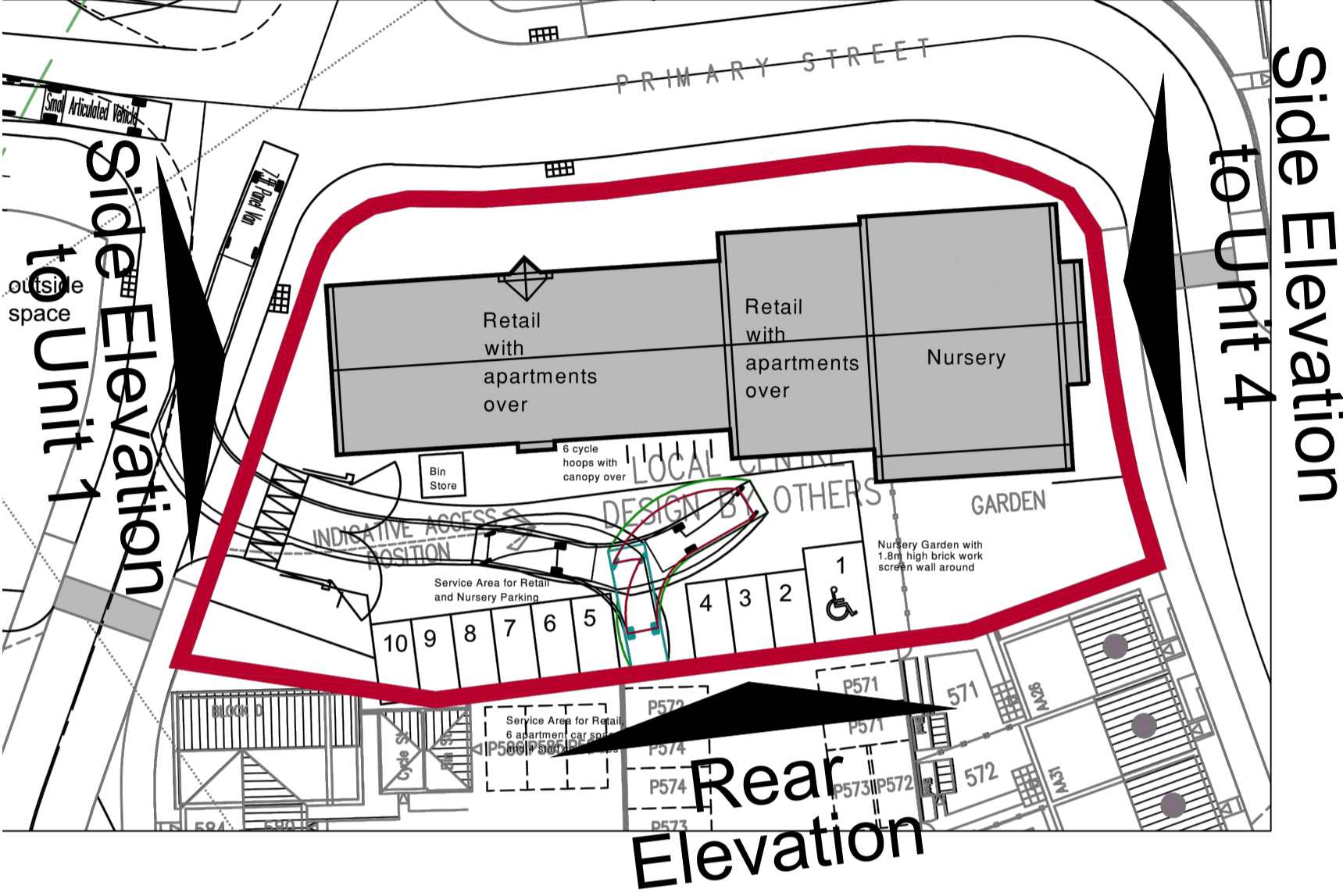
IMPORTANT
 THE COPYRIGHTS TO THE DESIGN ON THIS DRAWING REMAINS THE PROPERTY OF THE ARCHITECTS. THE CONTRACTOR, SUB-CONTRACTORS AND SUPPLIERS MUST VERIFY ALL DIMENSIONS, LEVELS, PLUMB HEIGHTS, STEPS & OPENINGS ON SITE, BEFORE COMMENCING SHOP DRAWINGS AND/OR THE FULL REQUIREMENTS OF MUNICIPAL AND/OR OTHER LOCAL AUTHORITIES MUST BE ADHERED TO.

Key Plan not to scale

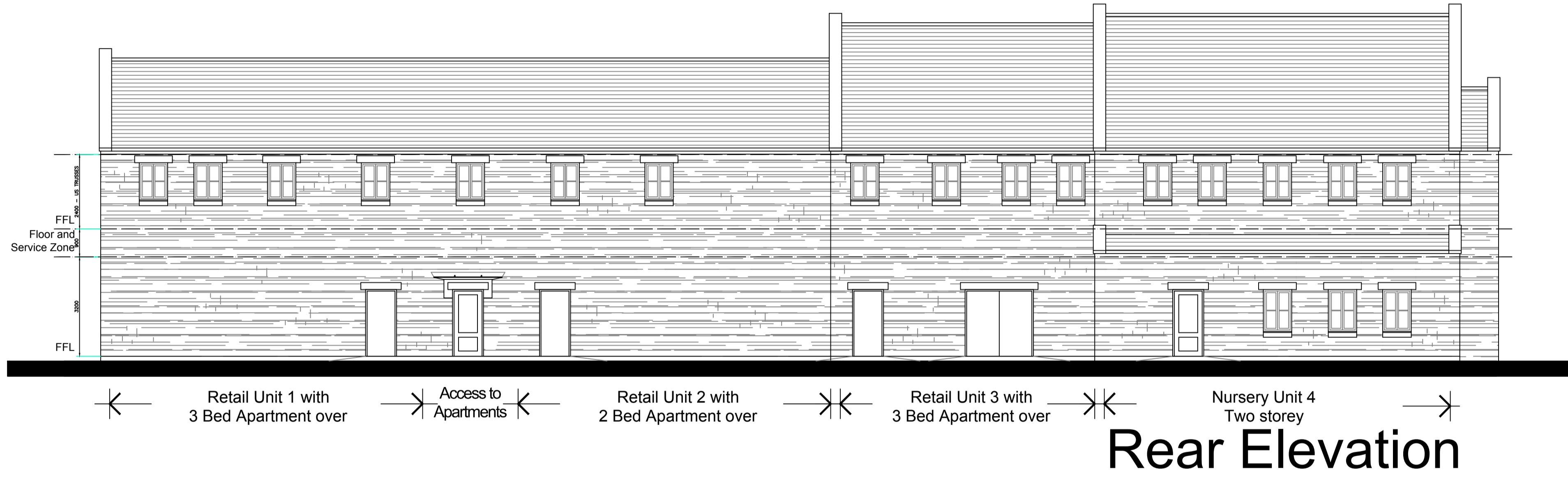
Shopfront Elevation



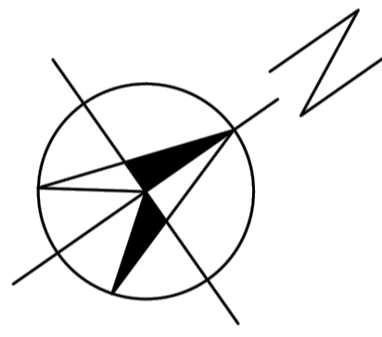
Shopfront Elevation



Rear Elevation



Rear Elevation



0 5 10 15 [m]

- M: 24.Aug15: Key plan updated
- L: 18Aug15: Side Elevation to Unit 4 altered. Brickwork altered to stone. Key Plan updated.
- J: 19June15: Secondary entrance to Nursery added.
- H: 17June15: Foot print altered. Site Plan altered.
- G: 28Apr15: Windows altered to suit Apartment changes.
- F: 17Apr15: Nursery Unit footprint altered.
- E: 24Feb15: Height of building reduced. Ground FFL to First FFL reduced. Window added to Side Elevation 1. Building footprint 'handed' within site. Access position in to rear parking area relocated.
- D: 03Feb15: Height of buildings increased. Fenestration altered.
- C: 03Oct14: Unit 4 noted as Nursery.
- B: 06Oct14: Planting added.
- A: 03Oct14: Graphical adjustments.

Schedule of Materials

Walls:
Horton Stone.

Roof:
Sandtoft 20/20 Tuscan interlocking plain clay tile to match 'Roofing 1, Plateau Specification.'

Doors and Windows:
Painted grey metal.

Shopfront Surrounds and Stall Risers:
Painted timber, colours to be confirmed.

Rainwater Goods:
Square section profile, black PVCu.

Rev.	Date	Revision

ABACUS
 CHARTERED ARCHITECTS LLP
 26 VICTORIA ST
 HOCKLEY
 BIRMINGHAM B1 3PE
 TEL. 0121 608 3700 FAX. 0121 608 3003
 e-mail : email@abacusarchitects.co.uk

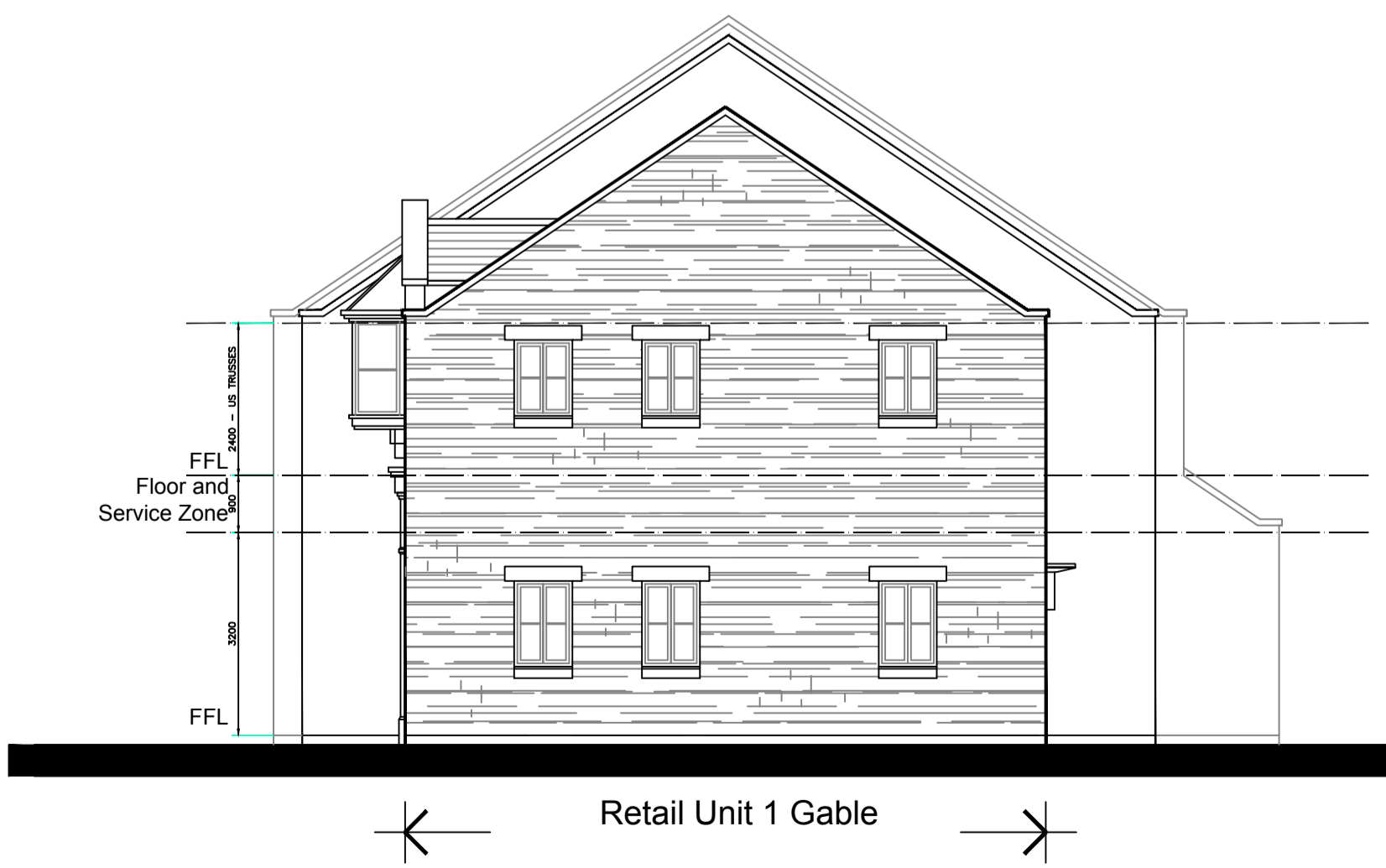
Development
Longford Park
 Apartments over Retail Units and Nursery

Title
Sketch Scheme:
 Elevations and Typical Shopfront Section

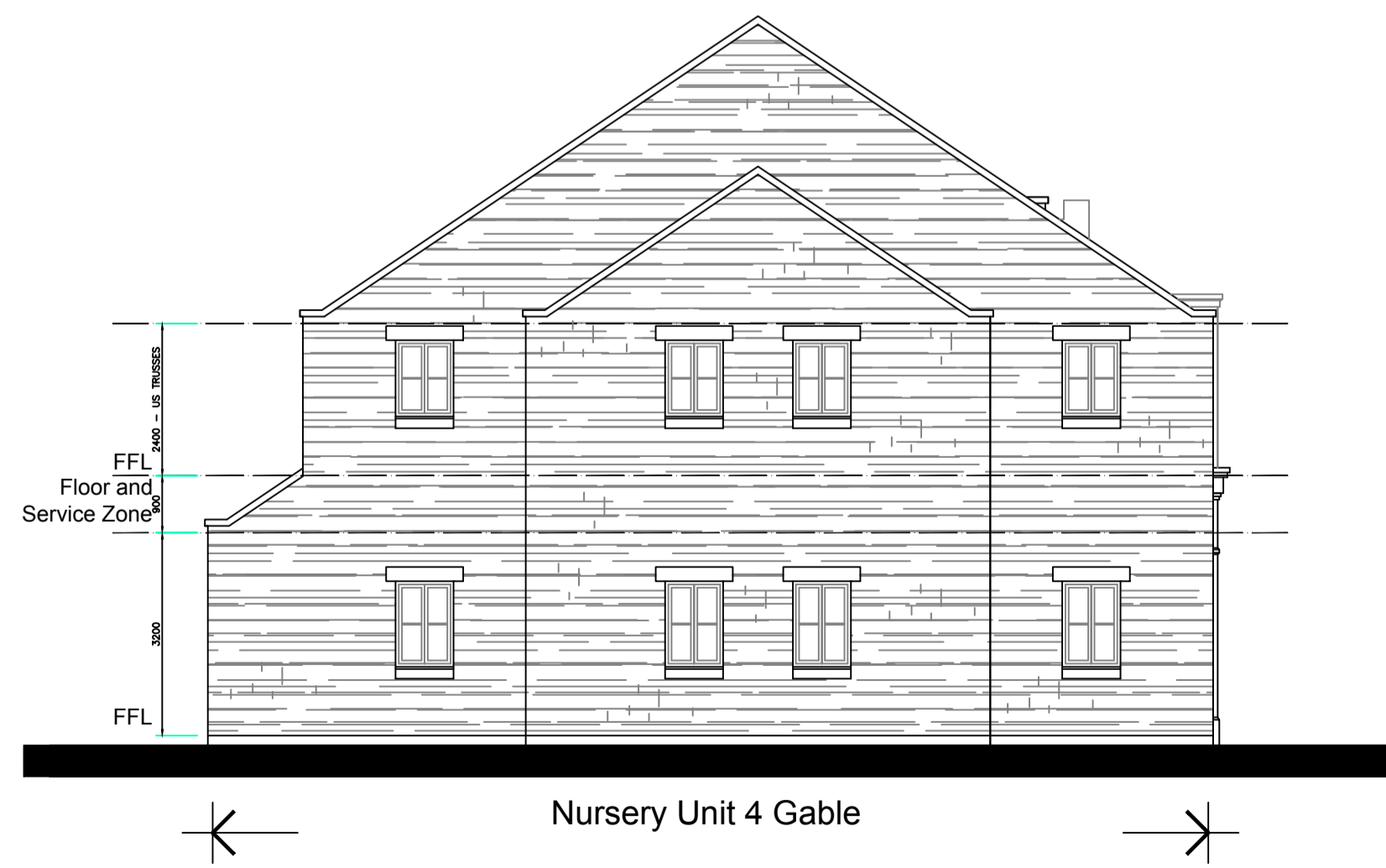
Scale 1:100 @ A1 size

Date June 2014 Drawn RJJ/G

Dirg. no 1419 301 Rev M



Side Elevation to Unit 1



Side Elevation to Unit 4