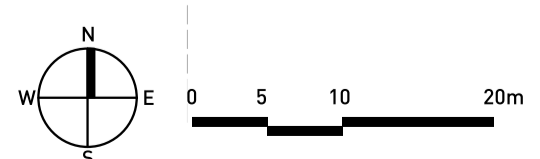
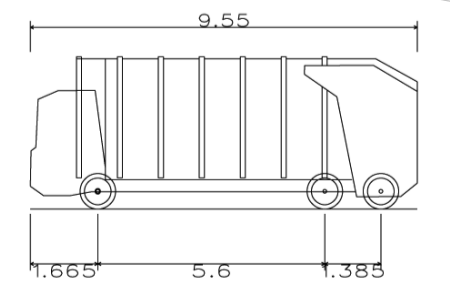


- KEY:**
- REFUSE TRACKING (SEE VEHICLE SPECIFICATION BELOW)
 - ADOPTABLE EXTENT
 - LAND TO BE MAINTAINED BY MANAGEMENT COMPANY
 - JUNCTION SIGHTLINES
 - FORWARD VISIBILITY
 - 2M x 2M PEDESTRIAN VISIBILITY SPLAYS

© Copyright Pegasus Planning Group Ltd. © Crown copyright. All rights reserved. Ordnance Survey Copyright Licence number 100042093. Promap Licence number 100020449. Standard OS licence rights, one year from purchase. Drawings prepared for planning application purposes and can be scaled (drawings are not to be used for construction or sales documents). Pegasus Urban Design is part of Pegasus Planning Group Ltd. Any queries to be reported to Pegasus for clarification.

	Estate Car (2006)	4.710m	9.550m
	Overall Length	1.804m	Overall Length
	Overall Width	1.442m	Overall Width
	Overall Body Height	0.207m	Overall Body Height
	Min Body Ground Clearance	1.756m	Min Body Ground Clearance
	Max Track Width	4.00s	Track Width
	Lock to Lock Time	5.950m	Lock to Lock Time
	Kerb to Kerb Turning Radius		Wall to Wall Turning Radius



HEYFORD PARK - HIGHWAYS PLAN, PARCEL B2B/B5A/B5B

