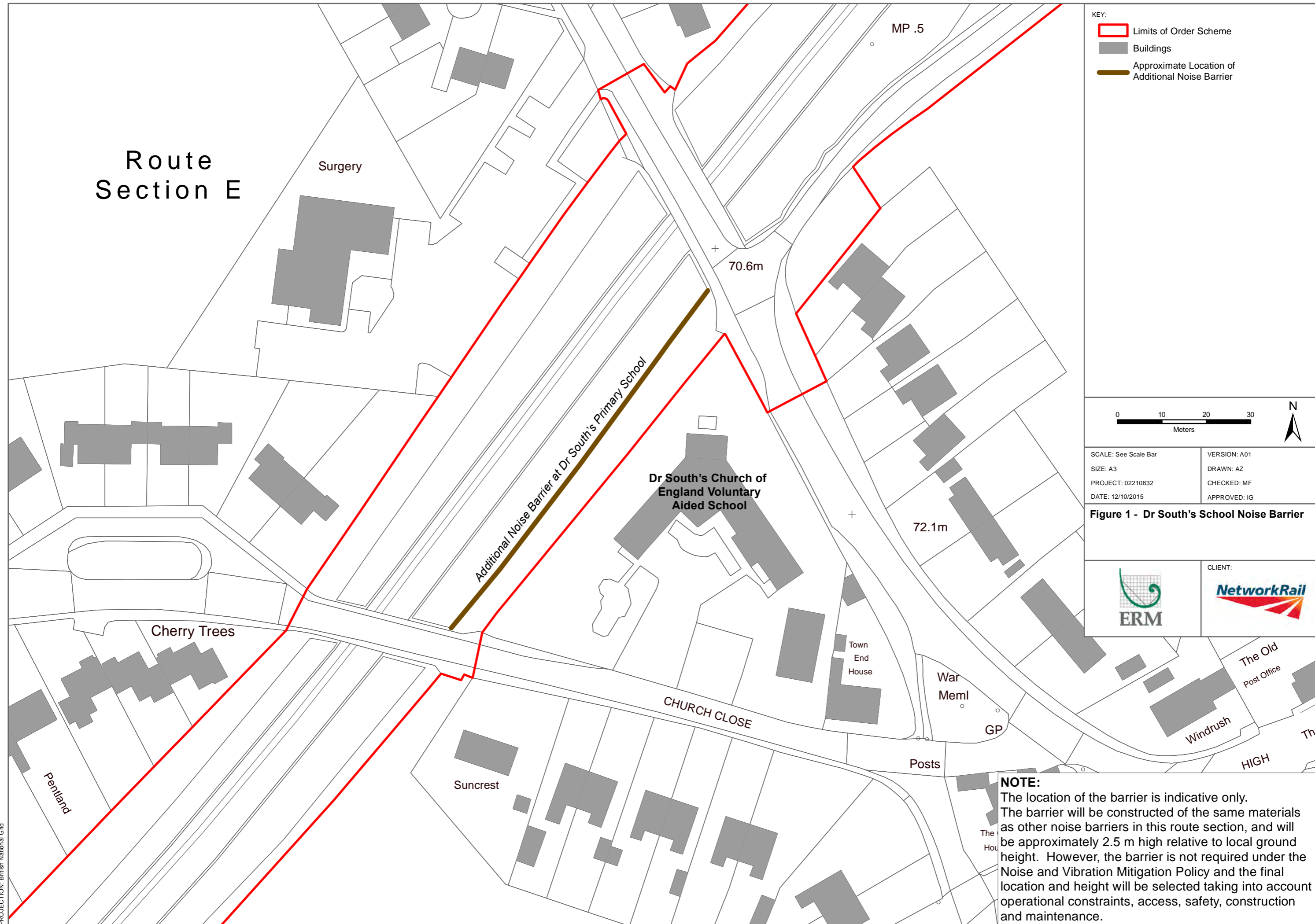
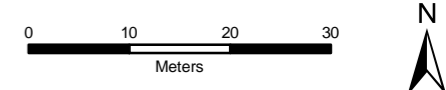


Route Section E



KEY:

- Limits of Order Scheme
- Buildings
- Approximate Location of Additional Noise Barrier



SCALE: See Scale Bar	VERSION: A01
SIZE: A3	DRAWN: AZ
PROJECT: 02210832	CHECKED: MF
DATE: 12/10/2015	APPROVED: IG

Figure 1 - Dr South's School Noise Barrier



NOTE:
 The location of the barrier is indicative only. The barrier will be constructed of the same materials as other noise barriers in this route section, and will be approximately 2.5 m high relative to local ground height. However, the barrier is not required under the Noise and Vibration Mitigation Policy and the final location and height will be selected taking into account operational constraints, access, safety, construction and maintenance.

PROJECTION: British National Grid