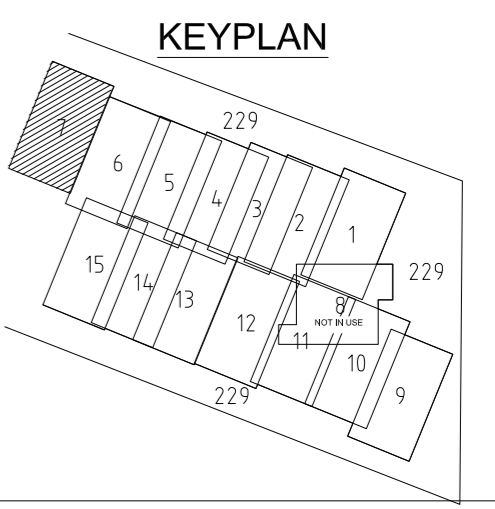


	Existing tree and hedge
	Proposed tree
	Proposed hedge
	Amently grass - Emorsgate EG22 Lawn Mixture - refer to schedule UA001881-701-1103
	Planting area
	EM6 Meadow mix for chalk and limestone soils (Perimeter planting) refer to schedule UA001881-701-1103.
	Eh1 Hedgerow mix (shade tolerant) refer to schedule UA001881-701-1103.
	Proposed tree grille - refer to drg no. UA001881-701-800
	Proposed tree pit. Refer to drg no. UA001881-701-800/801
	Green Roofs - refer to drg no. UA001880-701-933
	SUDS - refer to drg no. UA001881-701-811
	Exemplar boundary line
	Adoption boundary line
	Perimeter planting extents
	Light column

Plant type	Common name	Reference
Edible shrubs		
<i>Crataegus monogyna</i>	Hawthorn	CRA MON
Non - edible shrubs		
<i>Cornus sanguinea</i>	Dogwood	COR SAN
<i>Potentilla fruticosa</i>	Potentilla	POT FRU
Herbs		
<i>Lavandula angustifolia</i>	Lavender	LAV AUG
Ground Cover		
<i>Berginea cordifolia</i>	Berginea	BER COR
<i>Ajuga reptans</i>	Blue bugle	AJU REP

Tree Species*	Common name	Reference
<i>Amelanchier lamarkii</i>	Juneberry	AME LAM
<i>Liquidambar styraciflua</i>	Flowering pear	LIQ STY

For detailed Plant Schedule, refer to: UA001881-701-1102 Infrastructure Planting Schedule UA001881-701-1103 Phase 1 Planting Schedule For Topsoiling plans, refer to: UA001881-701-114 to 116 Tree locations and planting areas layout by ICS. Root barrier & tree pits - locations to be checked on site in line with drawings UA001881-701-800/801



06	Planting revised following CDC comments and discussion	11-03-16
05	Planting revised to align with scheme revisions & revisions to root barriers	21-10-15
04	'DRAFT' removed, tree pits added, note added, key revised	29-08-14
03	Drawing updated to OS layout and WH comments	14-05-14
02	General Amendments - Issue for planning condition discharge	21-12-12
V	Initial Draft	31-08-12
Issue	Description	Date

Status		PLANNING	
Scale	1:100 @ A1	Current Issue Signatures	
Original Size	A1	Author	R. BouSaleh
Height Datum	0.S.	Checker	B. Pope
Grid	0.S.	Approver	A.ZORLUTUNA
© Copyright reserved			

Filename: UA001881-701-900 SERIES - PLANTING PLAN (ADJUSTED) 03.08.16
Client:

HYDER CONSULTING (UK) Limited
5th Floor, The Pithay
All Saints Street
Bristol, England
BS1 2NL
Tel: +44 (0)870 000 3003
Fax: +44 (0)870 000 3903

Project
Bicester
Eco Development

Title
Planting Plan 7 -
Phase 1

Drawing No.	Project No.	Issue
701-911	UA001881	06

MATCH LINE FOR CONTINUATION SEE DWG. 701-921 River-Corridor-Planting Plan

MATCH LINE FOR CONTINUATION SEE DWG. 701-910

