

MATCH LINE  
FOR CONTINUATION  
SEE DWG 701-910

4 no. CAR BET  
'Frans Fontaine'  
(Infrastructure phase)

CS

KEY

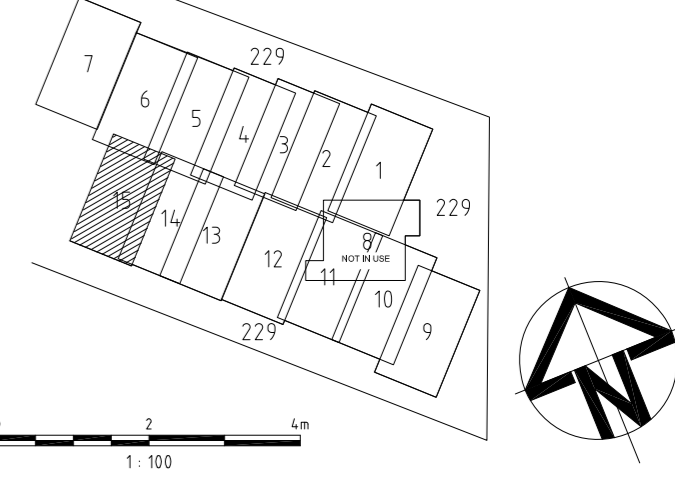
- Existing
  - Existing tree and hedge
- Proposed
  - Proposed tree
  - Proposed hedge
  - Amenity grass - Emorsgate EG22 Lawn Mixture - refer to schedule UA001881-701-1103
  - Planting area
  - EM6 Meadow mix for chalk and limestone soils (Perimeter planting) refer to schedule UA001881-701-1103.
  - EH1 Hedgerow mix (shade tolerant) refer to schedule UA001881-701-1103.
  - Proposed tree grille - refer to drg no. UA001881-701-800
  - Proposed tree pit. Refer to drg no. UA001881-701-800/801
  - Green Roofs - refer to drg no. UA001880-701-933
  - SUDS - refer to drg no. UA001881-701-811
  - Root Protection Barriers as per specification; located as indicated; to be min 600mm depth adjacent to boundaries, kerbs & surfaces, min 1.0m depth adjacent to buildings.
  - Exemplar boundary line
  - Adoption boundary line
  - Perimeter planting extents
  - Light column

Planting Plan 15 - Species List

Planting Plan 15		
Plant type	Common name	Reference
<b>Non-edible shrub</b>		
Carpinus betulus	Common Hornbeam	CAR BET hedge
<b>Herbs</b>		
Lavendula augustifolia	Lavender	LAV AUG
<b>Trees</b>		
<b>Tree Species</b>		
Carpinus betulus	Frans Fontaine	CAR BET

For detailed Plant Schedule, refer to:  
UA001881-701-1102 Infrastructure Planting Schedule  
UA001881-701-1103 Phase 1 Planting Schedule  
For Topsoiling plans, refer to: UA001881-701-114 to 116  
Tree locations and planting areas layout by ICS.  
Root barrier & tree pits - locations to be checked on site in line with drawings UA001881-701-800/801

KEYPLAN



- 4.2m2 Amenity grass
- 15 no. LAV AUG
- 3.7m2 Amenity grass
- 11 no. LAV AUG
- 5.3m2 Amenity grass
- 17 no. LAV AUG
- 4.2m2 Amenity grass
- 15 no. LAV AUG
- 80 no. CAR BET double staggered row

perimeter planting see drawing UA001881-701-929

perimeter planting see drawing UA001881-701-929

07	Planting revised following CDC comments and discussion	11-03-16
06	Planting revised to align with scheme revisions	21-10-15
05	'DRAFT' removed, TP's & note added, minor amendments Key revised	29-08-14
04	Drawing updated to CS layout and WDR comments	14-05-14
03	Green roof omitted from Energy Centre	10-01-12
02	General Amendments: Issue for planning condition discharge	21-12-12
V	Initial Draft	31-08-12
Issue	Description	Date
Status		
PLANNING		
Scales	1:100 @ A1	Current Issue Signatures
Original Size	A1	Author R. BOUSALEH
Height Datum	0.S.	Checker B. POPE
Grid	0.S.	Approver A. ZORLUTUNA
© Copyright reserved		

Filename: UA001881-701-900 SERIES - PLANTING PLAN (ADJUSTED) 03.08.16



**Hyder** HYDER CONSULTING (UK) Limited  
5th Floor, The Pithay  
All Saints Street  
Bristol, England  
BS1 2NL  
Tel: +44 (0)870 000 3003  
Fax: +44 (0)870 000 3903

Project  
Bicester  
Eco Development

Title  
Planting Plan 15 - Phase 1  
Future Link Road & Junction

Drawing No.	Project No.	Issue
701-919	UA001881	07

MATCH LINE  
FOR CONTINUATION  
SEE DWG 701-918