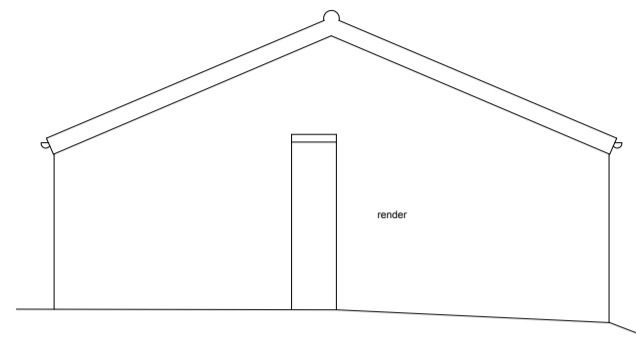


**General Notes:**

1. This drawing is to be read in conjunction with other consultants drawings
2. Check site conditions prior to commencement of work
3. Discrepancies must be reported directly to the Architect
4. Do not scale off drawing, use figured dimensions only
5. This drawing may be issued in colour, and may be a non-standard paper size

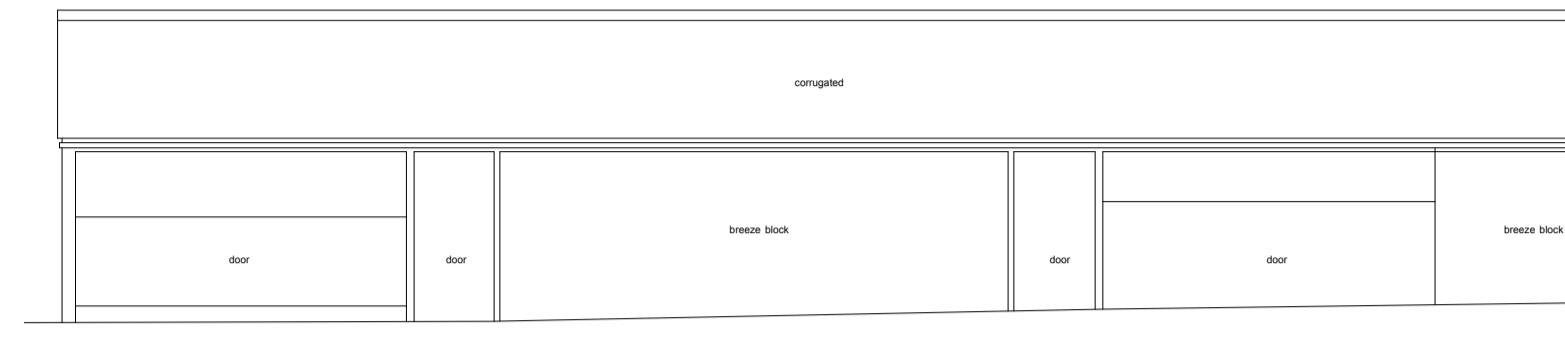
**BUILDING SURVEY KEY -**  
(WHERE APPLICABLE)

- |   |   |
|---|---|
| <ul style="list-style-type: none"> <li>tlm - temporary bench mark</li> <li>fl - finished floor level</li> <li>h - threshold level</li> <li>h1 - floor to head height</li> <li>sh - sill to head height</li> <li>u1 - base to sill height</li> <li>u1a - underside height</li> <li>ah - arch head height</li> <li>sp - arch springing point height</li> <li>ob - oak look</li> <li>(23) - room height</li> <li>rad - radiator</li> <li>hr - heater</li> <li>trah - heated towel rail</li> <li>twr - hot water tank</li> <li>wc - toilet</li> <li>wb - wash basin</li> <li>sh - shower</li> <li>st - toilet</li> <li>ur - urinal</li> <li>hd - hand dryer</li> <li>wp - waste pipe</li> <li>wp - vent pipe</li> <li>wp - rain water pipe</li> <li>wf - water fountain</li> <li>g - gully</li> <li>rl - roof light</li> <li>sus.c - suspended ceiling</li> </ul> | <ul style="list-style-type: none"> <li>elec - electricity</li> <li>emr - electricity meter</li> <li>gmtr - gas meter</li> <li>fr - fire hose reel</li> <li>tl - telecommunications point</li> <li>as - single electricity socket</li> <li>ds - double electricity socket</li> <li>li - light switch</li> <li>cp - cooker point</li> <li>ob - oak look</li> <li>fl - light fitting</li> <li>fl - fluorescent light fitting</li> <li>lar - motor alarm sensor</li> <li>ar - fire alarm sensor</li> <li>ab - alarm box</li> <li>am - water meter</li> <li>wr - radiator</li> <li>c - inspection chamber</li> <li>rn - rain pipe cover</li> <li>cl - cover level</li> <li>fl - floor level</li> <li>pd - pipe diameter</li> <li>fb - floorboard</li> <li>bc - concrete</li> <li>bc - brick</li> <li>qtiles - quarry tiles</li> <li>fp - fire place</li> </ul> |
|---|---|



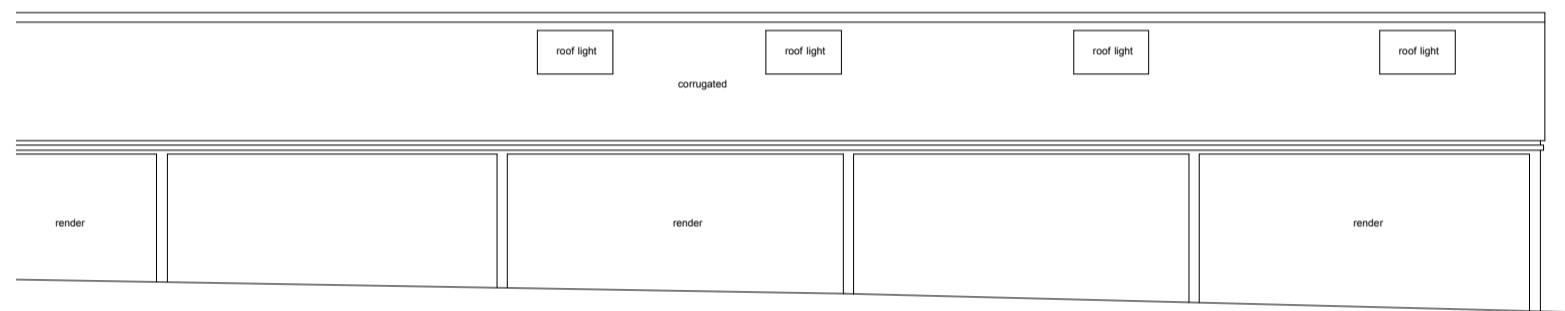
Datum 165.00m

**SOUTH ELEVATION**



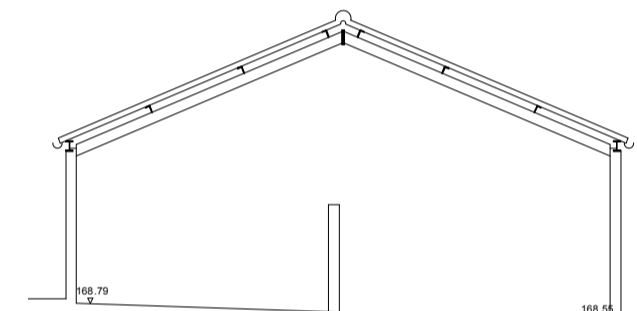
Datum 165.00m

**WEST ELEVATION**



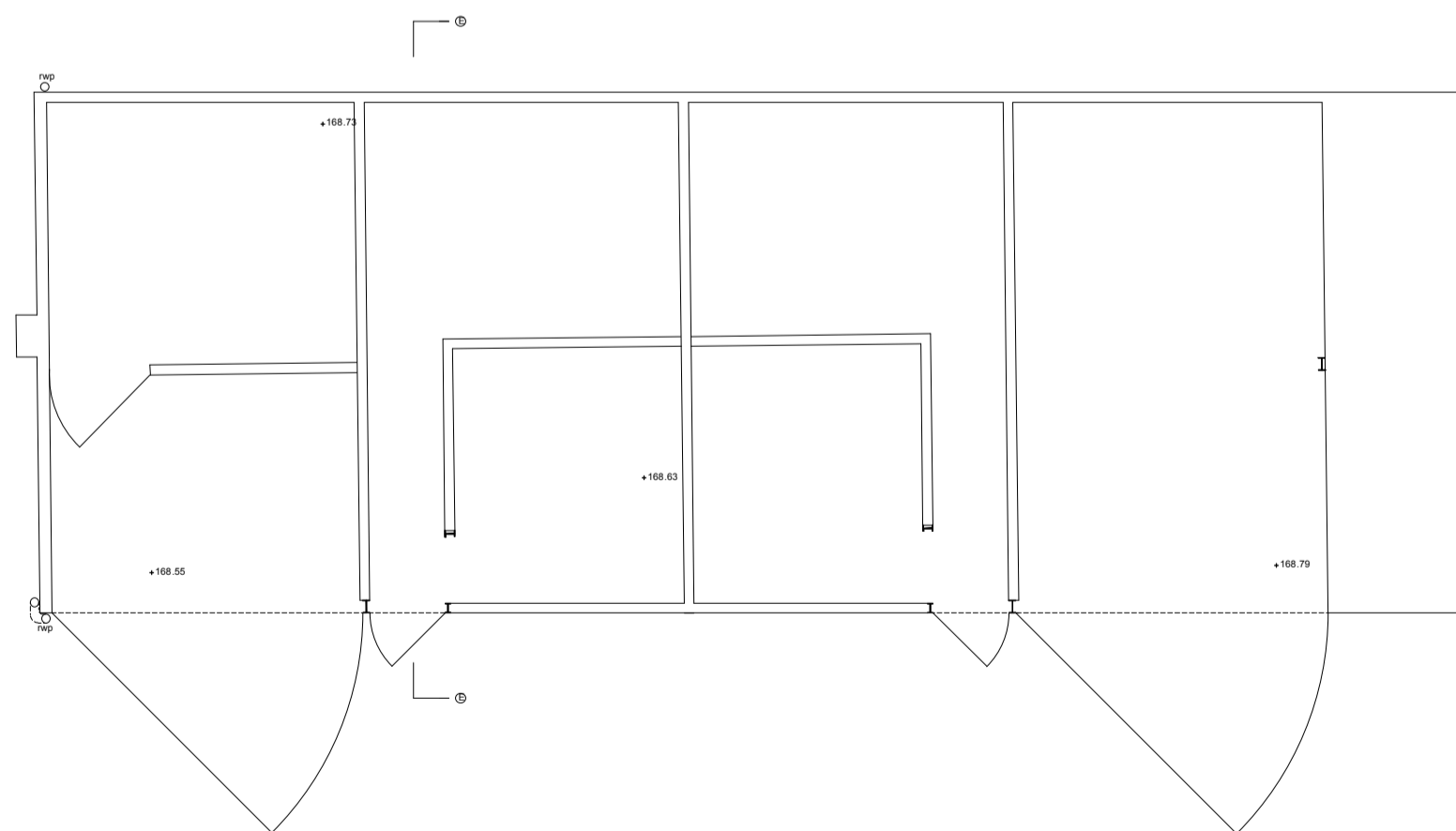
Datum 165.00m

**EAST ELEVATION**

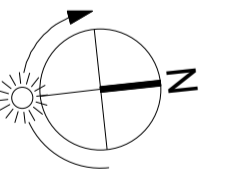


Datum 165.00m

**SECTION E-E**



**GROUND FLOOR PLAN**



A	12.12.14	Planning Issue	HM
Rev	Date	Notes	Drawn

Scale 1 : 100 @ A1

QA Serial Number 19367

**YIANGOU**  
YIANGOU ARCHITECTS

Dyer House, 3 Dyer Street  
Cirencester, Glouce, GL7 2PP  
+ 01296 888150  
e yon@yiangou.com  
w www.yiangou.com

Client	Mr & Mrs. Besterman
Project Address	Muddle Barn Farm, Sibford Gower, Oxon, OX15 5RY
Project Description	Replacement Dwelling
Drawing Title	Existing Stable 4 Plans and Elevations
Drawing No.	1759.015
Rev.	A