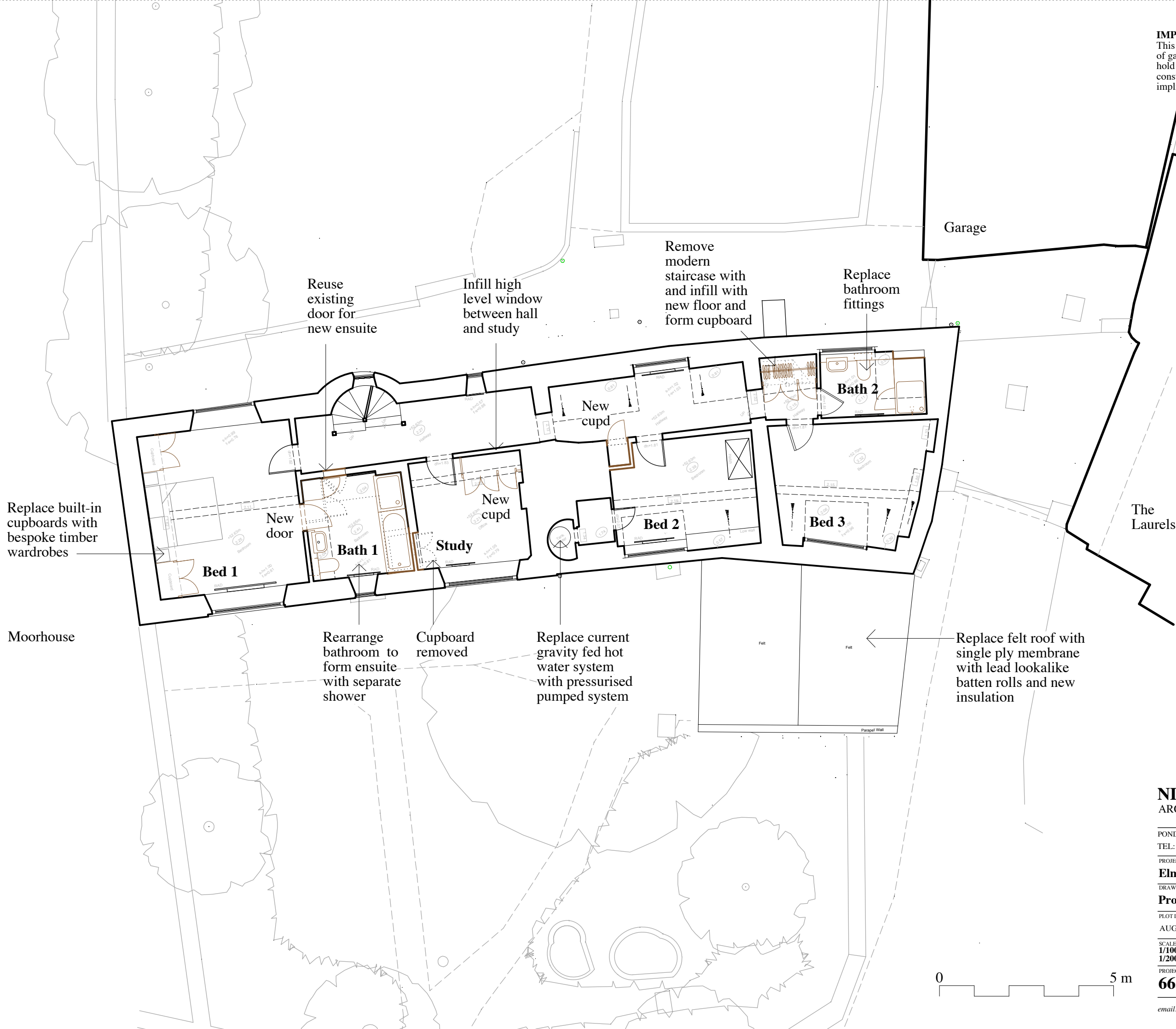


IMPORTANT NOTE
 This drawing has been prepared solely for the purpose of gaining planning approval. The architects do not hold themselves responsible for any materials use, or construction method or technique, which may be implied or inferred.



NICHOLS BROWN WEBBER
 ARCHITECTS AND LANDSCAPE PLANNERS

POND HOUSE, NORTHEM, HENLEY-ON-THAMES, OXON RG9 6LG
 TEL: TURVILLE HEATH (01491 638 536), FAX (01491 638 228)

PROJECT

Elm Tree House

DRAWING TITLE

Proposed first floor plan

PLOT DATE		CHECKED
AUG14		
SCALE		STATUS
1/100 @ A1		P
1/200 @ A3		
PROJECT NO	DRAWING NO	REVISION
665	P7	

email: enquiries@nbwarchitects.co.uk