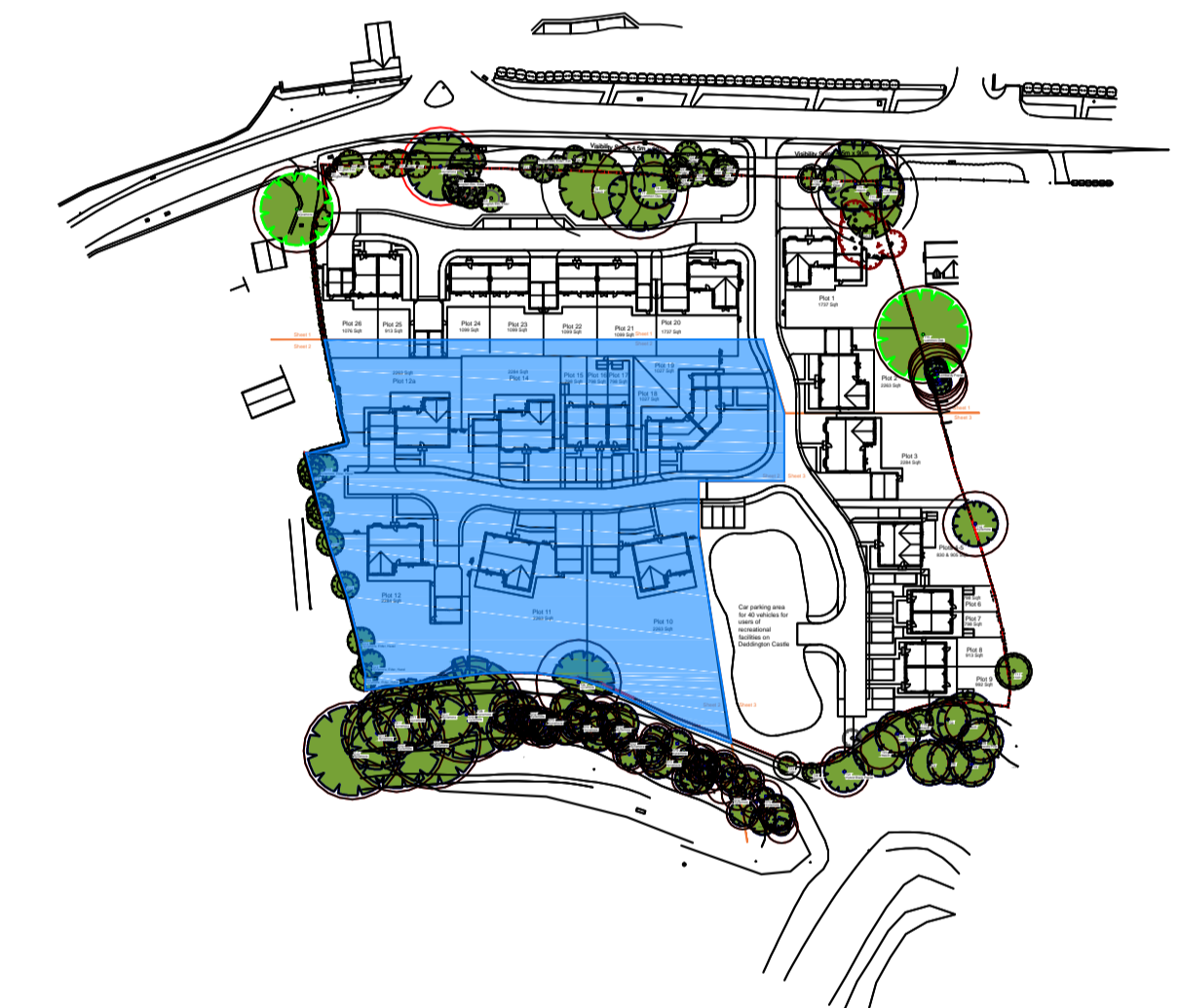


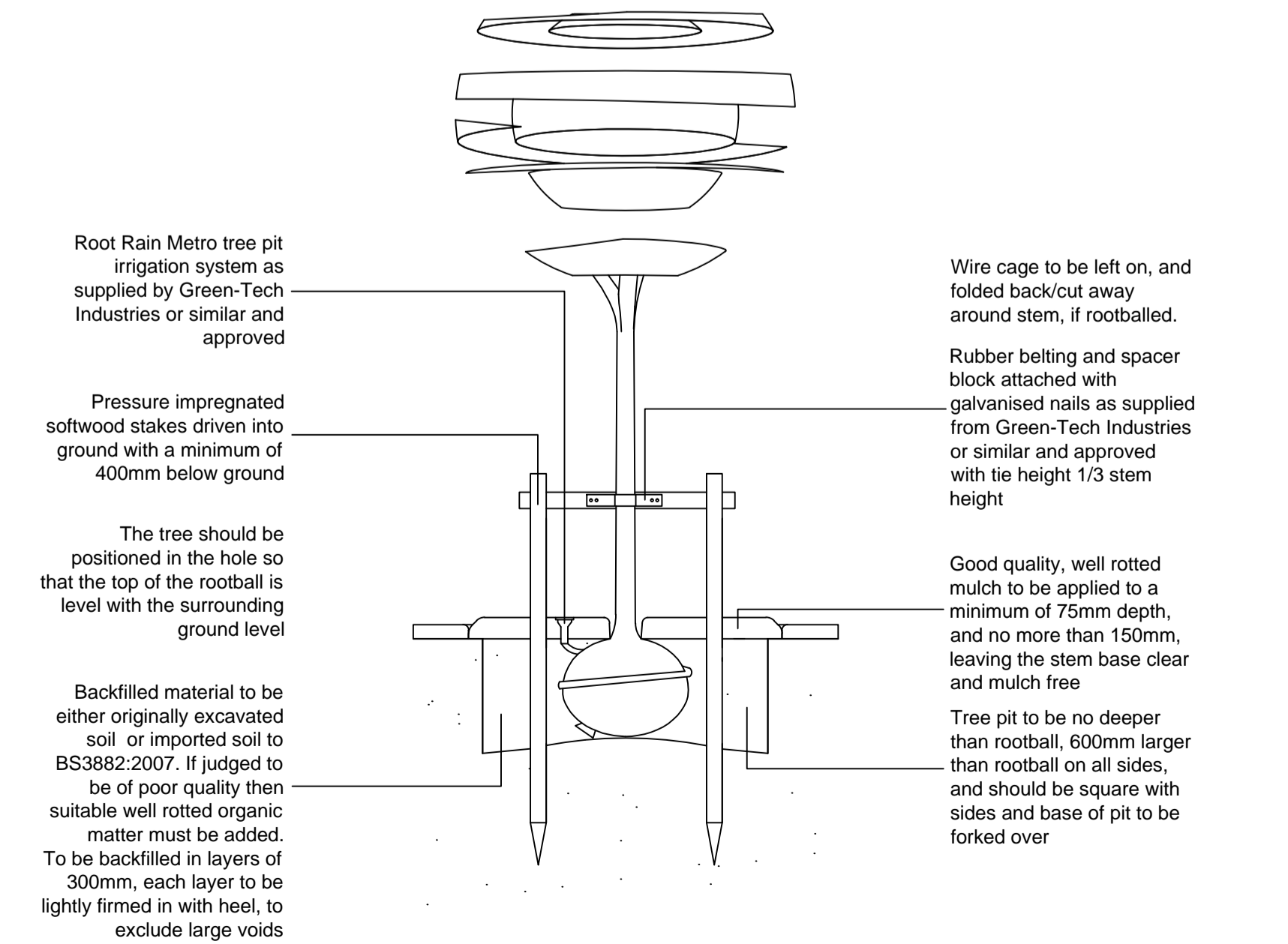
**SPECIFICATION**  
 Forestry Commission Practice note 8.  
 All native species should be of local stock. Native trees and shrubs certified as British Native plant stock.  
 All planting stock should comply with the Horticultural Trade Association National Plant specification.  
 All planting preparation, handling, planting & maintenance should be in accordance with CPSE Code for Handling and Establishing plants.  
 All trees and shrubs to comply with BS 3936 Part 1 1992, planted to BS 4043:1989 and BS 4428:1989. All works generally, to comply with the written Soft Landscape Specification.  
 Topsoil incorporated into planting beds to be gently mounded towards the centre of each bed to allow for settlement.  
 On completion of planting the whole area of the shrub bed shall be mulched with 75mm consolidated thickness of medium textured decorative grade natural pine bark having first been prepared in accordance with the specification. Free standing hedges shall have a 3 strand galvanised wire and tanalised softwood timber post between, to BS 1722 Part 2:2000, erected along a line between the two rows of hedge plants.  
 All existing trees and hedges to be protected in accordance with BS5837:2012 for the duration of the construction period.  
 NOTE: DO NOT SCALE FROM DRAWING  
 For plant schedule see sheet 1

- Legend**
- Existing trees to be retained and protected during construction
  - Proposed tree planting to receive short double staking with expandable rubber tree ties and irrigation tubing to root system
  - Proposed specimen shrub planting to receive short angular staking with expandable tree ties and irrigation tubing to root system as required
  - Proposed climbing plants to be trained up adjacent wall/fence with galvanised wire and hook set 250mm apart with support canes removed prior to planting
  - Proposed ornamental native hedge mix to be planted in a double staggered row 500mm apart and placed 500mm apart in each row with 75mm bark mulch to base, to be maintained at a maximum height of 1.2 m
  - Proposed mixed native hedge to be planted in a double staggered row 500mm apart and placed 500mm apart in each row with 75mm bark mulch to base, to be maintained at a maximum height of X m
  - Proposed shrub planting to receive 75mm bark mulch after planting operations
  - Proposed bulb mix of wild daffodils, English bluebells and snowdrops to be planted in groups of 3, 5 and 7 of the same species spread in a natural pattern at 5x the depth of the bulb
  - Proposed grass areas to receive good quality amenity grass turves laid in line with good horticultural practices
  - Proposed wildflower area to be seeded with EH1 'Hedgerow Mixture' or similar, available from Ecoterrain Seeds (wildseed.co.uk) sown at a rate of 4g/m<sup>2</sup> in line with good horticultural practices
  - Proposed grass areas to be seeded with good quality grass seed in line with good horticultural practices
  - Root Protection areas
  - Existing trees to be removed
  - Cut lines



Sheet location plan

Tree Planting Pit Detail within Soft Landscape



All components as supplied from Green Leaf or similar and approved

Rev Date Details Drawn

**ACD**  
 Ecology  
 Arbiculture  
 Landscape Architecture

ACD Landscape Architects & ACD Ecology  
 Rodbourne Rail Business Centre, Grange Lane, Malinesbury, Wilt, SN16 0ES  
 Tel: 01666 825646 Fax: 01666 824654

ACD Arbiculture  
 Tanners, Lower Street, Haslemere, Surrey, GU27 2PE  
 Tel: 01483 425714 Fax: 01428 641090

ACD (Landscape Architects) Southampton  
 12 Southgate Street, Winchester, Hampshire, SO23 9EF  
 Tel: 01962 855604  
 www.acdlandscape.co.uk

**BANNER**  
 HOMES

scheme: Clifton Road, Deddington  
 client: Banner Homes  
 drawing: Landscape Proposals  
 date: FEB '14  
 scale: 1:200@A1  
 drawing no: BAN18590-11 Sheet 2 of 3  
 drawn: HG checked: JC

Copyright of ACD Landscape Architects Ltd. All rights reserved in Chapter IV of the Copyright, Designs and Patents Act 1988 have been generally asserted: 2011. Copyright of this plan remains with ACD until all fees have been paid in full.