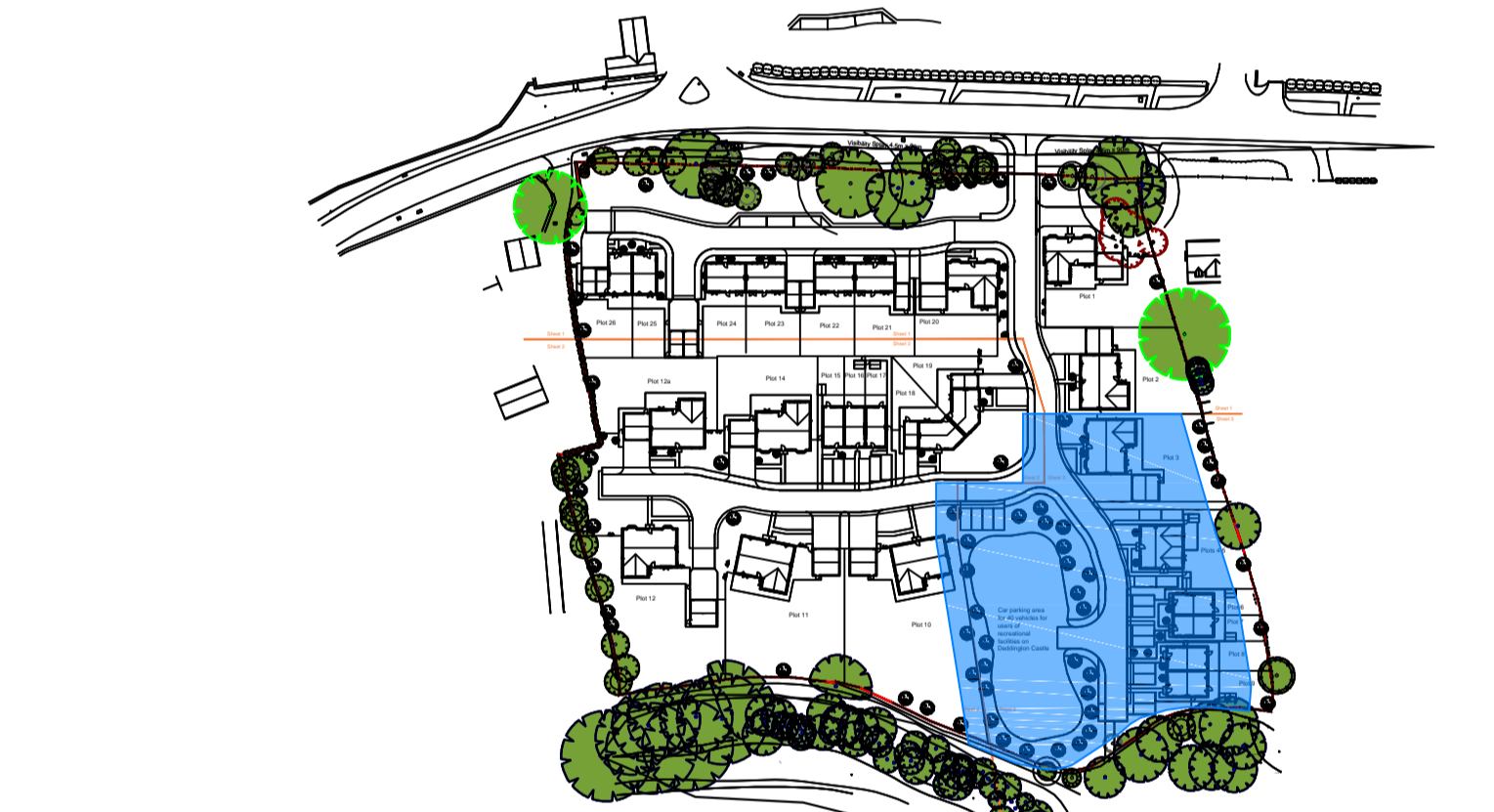


Species Name	Birth	Height	Density	Specification	Quantity	No.
<i>Cornus betulus</i>	60-80cm	0.4m	Double Staggered at 0.4m offset	Transplant BB	Planted and maintained as hedge	208 No.
<i>Crataegus monogyna</i>	60-80cm	0.4m	Double Staggered at 0.4m offset	Transplant BB	Planted and maintained as hedge	208 No.
<i>Euonymus europaeus</i>	12-14cm	0.4m	Double Staggered at 0.4m offset	Transplant BB	Planted and maintained as hedge	208 No.
<i>Malus sylvestris</i>	60-80cm	0.4m	Double Staggered at 0.4m offset	Transplant BB	Planted and maintained as hedge	208 No.
<i>Malus Evereste</i>	14-16cm	0.4m	Double Staggered at 0.4m offset	Selected Standard	Clear Stem 175-200 4 brks 3x RB	4 No.
<i>Sorbus aucuparia</i>	12-14cm	0.4m	Double Staggered at 0.4m offset	Transplant BB	Planted and maintained as hedge	208 No.
<i>Prunus avium</i>	12-14cm	0.4m	Double Staggered at 0.4m offset	Transplant BB	Planted and maintained as hedge	208 No.
<i>Acer campestre</i>	12-14cm	0.4m	Double Staggered at 0.4m offset	Transplant BB	Planted and maintained as hedge	208 No.
<i>Sorbus aucuparia</i>	12-14cm	0.4m	Double Staggered at 0.4m offset	Transplant BB	Planted and maintained as hedge	208 No.
<i>Prunus avium Plena</i>	12-14cm	0.4m	Double Staggered at 0.4m offset	Transplant BB	Planted and maintained as hedge	208 No.
<i>Quercus robur</i>	12-14cm	0.4m	Double Staggered at 0.4m offset	Transplant BB	Planted and maintained as hedge	208 No.
<i>Fagus sylvatica</i>	12-14cm	0.4m	Double Staggered at 0.4m offset	Transplant BB	Planted and maintained as hedge	208 No.
<i>Populus nigra</i>	14-16cm	0.4m	Double Staggered at 0.4m offset	Transplant BB	Planted and maintained as hedge	208 No.

Species Name	Height	Pot Size	Specification	Density	No.
<i>Abelia grandiflora</i>	40-60cm	5-7.5L	Bushy 3/6 brks 3x	4/m	164 No.
<i>Buxus davidii Black Knight</i>	60-80cm	10L	Bushy 7/10 brks C	4/m	6 No.
<i>Buxus sempervirens (ball)</i>	30-40cm	10L	Bushy 7/10 brks C, clipped into a topiary ball	4/m	28 No.
<i>Ceanothus thyrsiflorus repens</i>	40-60cm	5-7.5L	Bushy 5 brks 6	4/m	108 No.
<i>Cistus Silver Pink</i>	40-60cm	5-7.5L	Bushy 5/6 brks 3x	4/m	98 No.
<i>Cornus sanguinea</i>	60-80cm	10L	Bushy 6/8 brks 3x	4/m	108 No.
<i>Cornus avellana</i>	60-80cm	10L	Bushy 6/8 brks 3x	4/m	108 No.
<i>Cornus avellana Red Maestic</i>	60-100cm	15L	Bushy 6/8 brks 3x	4/m	2 No.
<i>Elaeagnus ebbingei</i>	40-60cm	5-7.5L	Bushy 4 brks C	4/m	64 No.
<i>Elaeagnus ebbingei</i>	80-100cm	10L	Bushy 6/8 brks 3x	4/m	64 No.
<i>Euonymus fortunei Silver Queen</i>	60-100cm	5-7.5L	Bushy 6/8 brks 3x	4/m	173 No.
<i>Euonymus fortunei</i>	60-100cm	5-7.5L	Bushy 6/8 brks 3x	4/m	173 No.
<i>Hebe 'Great Orme'</i>	40-60cm	5-7.5L	Bushy 7 brks C	4/m	8 No.
<i>Hebe 'Great Orme'</i>	40-60cm	5-7.5L	Bushy 7 brks C	4/m	8 No.
<i>Ilex aquifolium</i>	80-100cm	10L	Leader With Lateralis C	4/m	4 No.
<i>Kolkwitzia amabilis Pink Cloud</i>	60-100cm	10L	Bushy 5/6 brks 3x	4/m	1 No.
<i>Lavandula angustifolia Hidcote</i>	60-80cm	5-7.5L	Bushy 7 brks C	4/m	144 No.
<i>Ligustrum ovalifolium</i>	60-100cm	10L	Bushy 7/10 brks C	4/m	64 No.
<i>Photinia fraseri Red Robin</i>	60-100cm	5-7.5L	Bushy 6/8 brks 3x	4/m	168 No.
<i>Photinia fraseri Red Robin</i>	60-100cm	10L	Bushy 6/8 brks 3x	4/m	168 No.
<i>Prunus laurocerasus</i>	60-100cm	10L	Bushy 3 brks 3x	4/m	4 No.
<i>Prunus spinosa</i>	60-80cm	5-7.5L	Bushy 6/8 brks 3x	4/m	173 No.
<i>Rosmarinus officinalis Benenden Blue</i>	60-100cm	5-7.5L	Bushy 6/8 brks 3x	4/m	113 No.
<i>Rosmarinus officinalis Benenden Blue</i>	60-100cm	10L	Bushy 6/8 brks 3x	4/m	113 No.
<i>Sambucus nigra Guincho Purple</i>	80-100cm	15L	Bushy 6/8 brks 3x	4/m	2 No.
<i>Sarcococca hookerana digy Purple Stem</i>	30-40cm	5-7.5L	Bushy 4/6 brks 3x	4/m	11 No.
<i>Viburnum opulus</i>	60-80cm	5-7.5L	Bushy 6/8 brks 3x	4/m	173 No.
<i>Vinca minor Atropurpurea</i>	10-20cm	5-7.5L	Bushy 5 brks C	4/m	69 No.

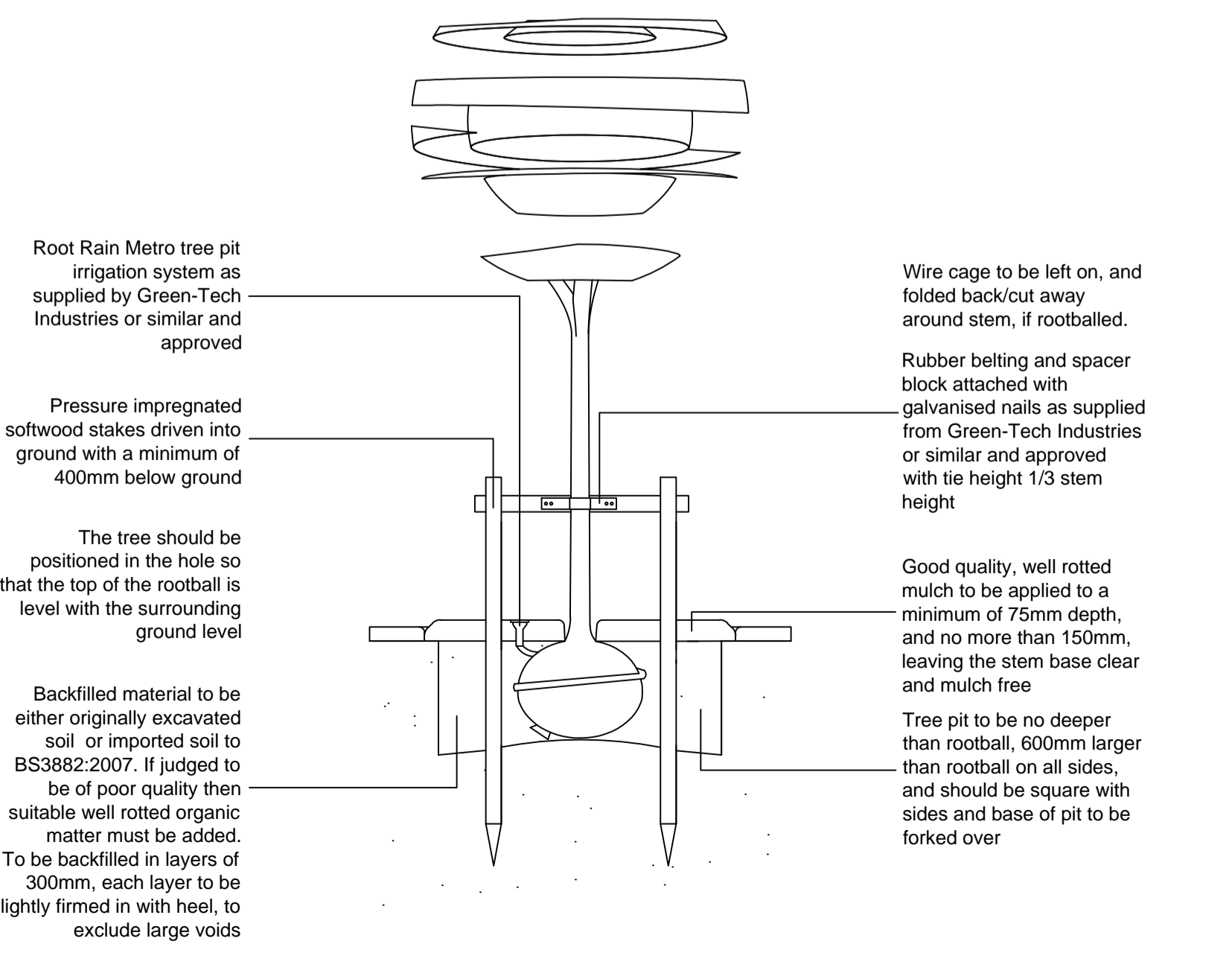
Species Name	Height	Pot Size	Specification	Density	No.
<i>Clematis armandi Apple Blossom</i>	100-150cm	10L	Several shoots 5 brks (caned)	4/m	2 No.
<i>Hydrangea peltata</i>	100-150cm	10L	Several shoots 5 brks (caned)	4/m	2 No.
<i>Hydrangea peltata</i>	100-150cm	10L	Several shoots 5 brks (caned)	4/m	2 No.

Species Name	Specification	Density	No.
<i>Hyacinthoides non-scripta</i>	10cm	25/m	845 No.
<i>Narcissus pseudonarcissus</i>	10cm	25/m	1728 No.



Sheet location plan

Tree Planting Pit Detail within Soft Landscape



SPECIFICATION
Forestry Commission Practice note 8.
All native species should be of local stock. Native trees and shrubs certified as British Native plant stock.

All planting stock should comply with the Horticultural Trade Association National Plant specification.

All planting preparation, handling, planting & maintenance should be in accordance with CPSE Code for Handling and Establishing plants.
All trees and shrubs to comply with BS 3936 Part 1 1992, planted to BS 4043:1989 and BS 4428:1989.
All works generally, to comply with the written Soft Landscape Specification.

Topsoil incorporated into planting beds to be gently mounded towards the centre of each bed to allow for settlement.

On completion of planting the whole area of the shrub bed shall be mulched with 75mm consolidated thickness of medium textured decorative grade natural pine bark having first been prepared in accordance with the specification.

Free standing hedges shall have a 3 strand galvanised wire and tannalised softwood timber post fence, to BS 1722 Part 2:2000, erected along a line between the two rows of hedge plants.

All existing trees and hedges to be protected in accordance with BS5837:2012 for the duration of the construction period.

NOTE: DO NOT SCALE FROM DRAWING

Legend

- Existing trees to be retained and protected during construction
- Proposed tree planting to receive short double staking with expandable rubber tree ties and irrigation tubing to root system
- Proposed specimen shrub planting to receive short angular staking with expandable tree tie and irrigation tubing to root system as required
- Proposed climbing plants to be trained up adjacent wall / fence with galvanised wire and hook end 250mm apart with support canes removed prior to planting
- Proposed ornamental native hedge mix to be planted in a double staggered row 500mm apart and placed 400mm apart in each row with 75mm bark mulch to base, to be maintained at a maximum height of 1.2 m
- Proposed mixed native hedge to be planted in a double staggered row 500mm apart and placed 500mm apart in each row with 75mm bark mulch to base, to be maintained at a maximum height of 1.2 m
- Proposed shrub planting to receive 75mm bark mulch after planting operations
- Proposed bulb mix of wild daffodils, English bluebells and snowdrops to be planted in groups of 3, 5 and 7 of the same species sown in a natural pattern at 3x the depth of the bulb
- Proposed grass areas to receive good quality amenity grass turves laid in line with good horticultural practices
- Proposed wildflower area to be seeded with EHT 'Hedgegrow Mix' or similar, available from Emergent Seeds (wildseed.co.uk) sown at a rate of 4g/m² in line with good horticultural practices
- Proposed grass areas to be seeded with good quality grass seed in line with good horticultural practices
- Root Protection areas
- Existing trees to be removed
- Cut lines

4 3 2 1 0 2 4 5m

Rev	Date	Details	Drawn

ACD Ecology
Arbiculture
Landscape Architecture

ACD Landscape Architects & ACD Ecology
Rodbourne Rail Business Centre, Grange Lane, Malnesbury, Wils, SN16 0ES
Tel: 01666 825646 Fax: 01666 824654

ACD Arbiculture
Tanners, Lower Street, Haslemere, Surrey, GU27 2PE
Tel: 01483 425714 Fax: 01428 641090

ACD (Landscape Architects) Southampton
12 Southgate Street, Winchester, Hampshire, SO23 9EF
Tel: 01962 855604
www.acdlandscape.co.uk

BANNER HOMES

scheme: Clifton Road, Deddington
client: Banner Homes
drawing: Landscape Proposals
date: FEB '14
scale: 1:200@A1
drawing no: BAN18590-11 Sheet 3 of 3
drawn: HG checked: JC

Copyright of ACD Landscape Architects Ltd. All rights described in Chapter IV of the Copyright, Designs and Patents Act 1988 have been generally assigned: 2011. Copyright of this plan remains with ACD until all fees have been paid in full.