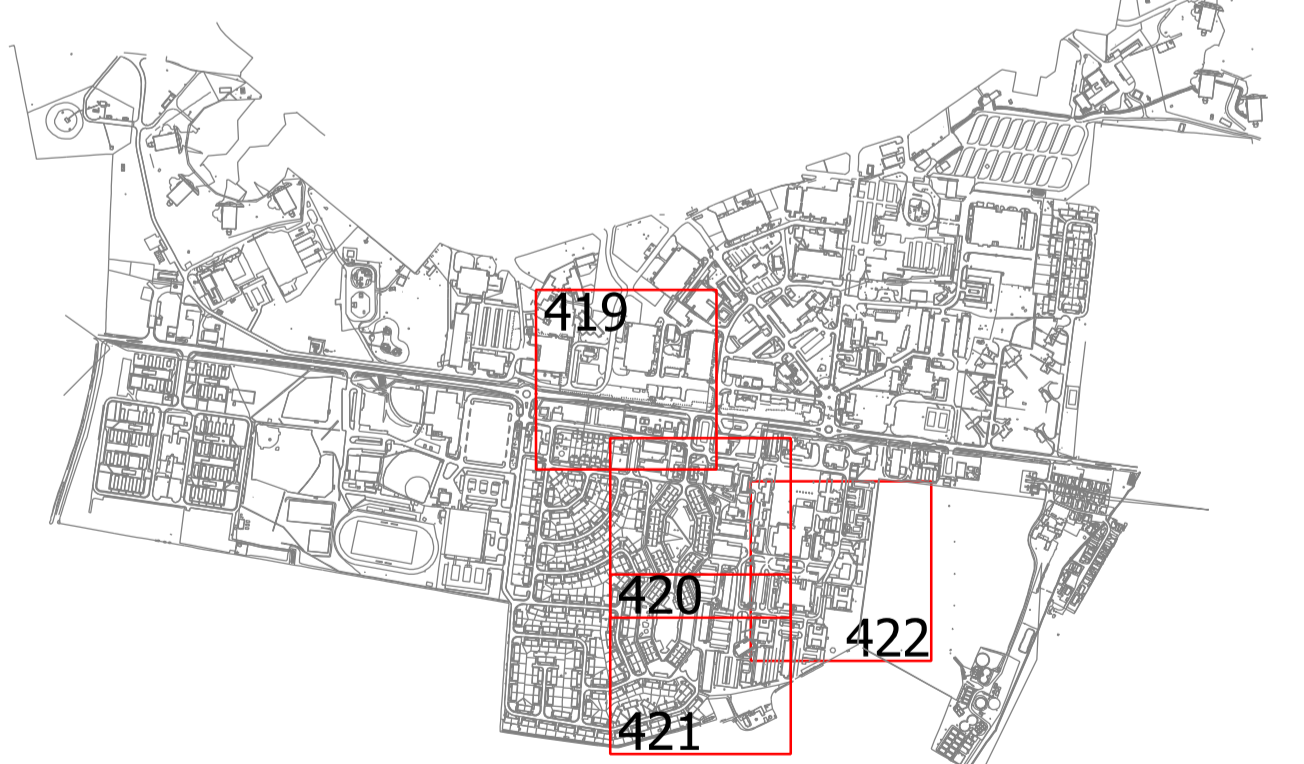


- Contractors must check all dimensions on site. Only figured dimensions are to be worked from. Discrepancies must be reported to the Architect or Engineer before proceeding. © This drawing is copyright
- Reproduced from OS Sitemap © by permission of Ordnance Survey® on behalf of The Controller of Her Majesty's Stationery Office. © Crown copyright 2008. All rights reserved. Licence number 100007126.
- Existing drainage invert level, cover level and pipe sizes taken from survey information. Not all drainage connections have been proven and some invert levels are marked as assumed.
- Further survey may be required to locate pipes and services which may affect construction of the drainage.
- Pipe lengths to be abandoned to be CCTV'd to ensure no further saddle connections/buried manholes are adversely affected.
- Cover levels through the proposed development are subject to detailed design and may change from that shown.
- Contractor to confirm all ILs prior to commencement including upstream and downstream MHS.
- Refer to drawings HEYF/5/419, HEYF/5/420 and HEYF/5/422 for continuation of drainage.
- Refer to drawing HEYF/5/423 for MH schedule.
- Surface water storage tanks to be constructed from 1mx0.4x0.5m Aquacell core units by Wavin or similar approved. Min cover without concrete protection is 0.6m in trafficked areas and 0.3m in soft landscaped areas.

- S1 CL 122.000 IL 120.000 Proposed surface water drainage diversion and enabling works with manhole reference, cover level, invert level, pipe size and gradient
- 0800 Existing surface water drainage with manhole reference, cover level, invert level and pipe size
- S2 CL 122.000 IL 120.000 Proposed residential development surface water drainage with manhole reference, cover level, invert level and pipe size
- F1 CL 122.000 IL 120.000 Proposed foul water drainage diversion and new runs with manhole reference, cover level, invert level, pipe size and gradient
- Existing foul water drainage with manhole reference, cover level, invert level and pipe size
- F2 CL 122.000 IL 120.000 Proposed residential development foul water drainage with manhole reference, cover level, invert level and pipe size
- Existing drainage to be abandoned. Pipes and manholes to be grubbed up
- 100mm thick concrete slab over adoptable drainage that has less than 1.2m cover
- Areas of lined porous paving (part of on-plot works)



Revision	Description	Drawn	Checked	Date
G	Foul network amended to consider future SWS works for parcels D2a, D3a & D4a	AT	JF	29.08.14
F	Extent of existing concrete culvert downstream of interceptor indicated. FC9a added	AT	JF	28.07.14
E	Drawing limits revised and drawing 419 indicated on key plan	AT	JF	27.05.14
D	FC8b added	AT	JF	14.03.14
C	SC17 and SC18 invert levels amended	AT	JF	17.02.14
B	FRM outfalling into FC8 indicated	AT	JF	08.11.13
A	Existing layout amended to suit site survey	AT	JF	01.11.13

Woods Hardwick
Architects, Engineers and Development Consultants

15-17 Goldington Road
MK40 3JH
United Kingdom
T. +44 (0)1234 268862
F. +44 (0)1234 353034
mail@woodsardwick.com
www.woodsardwick.com

Title: UPPER HEYFORD

Details: CENTRAL FLYING FIELD DIVERSION
GENERAL ARRANGEMENT (SHEET 3 OF 4)

Scale: 1:500 @ A1 Date: AUGUST 2013 Drawn: AT Chk: JF

Please consider the environment before printing this drawing

Minimum 2m deep root protection such as "Terram routeguard" or similar approved to be installed where proposed sewers are in close proximity to proposed/ existing trees

