

SITE LOCATION PLAN (NOT TO SCALE)



TRAFFIC MANAGEMENT ACT

SERVICE ORDER No: 50104179 GRID REF: SPS13072568

OPERATION No: GRID REF:

OPERATION No: GRID REF:

OPERATION No: GRID REF:

OPERATION No: GRID REF:

AS LAID SIGN OFF

ROUTE OF NEW MAIN & APPARATUS AS INDICATED

DEPTH OF COVER OF NEW MAIN:

0.9 OTHER (PLEASE STATE)

DEPTH OF COVER AT CONNECTION POINT TO EXISTING MAIN (POINT 1):

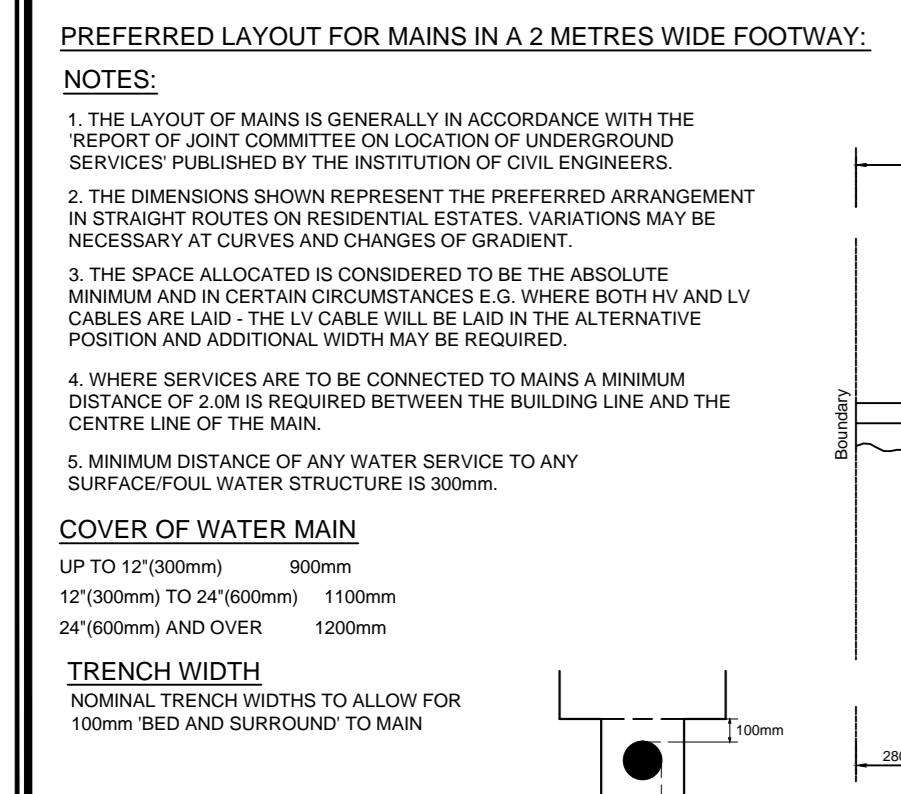
0.9 OTHER (PLEASE STATE)

PART AS LAD'S DRAWING FULL AS LAD DRAWING

F1/s PERMANENTLY REINSTATED YES NO N/A

CONTRACTOR SIGN OFF: DATE

THAMES WATER SIGN OFF: DATE



SCHEDULE OF FITTINGS

ALL FITTINGS AND CONNECTIONS ARE TO BE INSTALLED IN ACCORDANCE WITH 'L' OF CI STANDARD NEW MAINS AND CONNECTIONS

POINT NUMBER	FITTINGS
Point 1	1 Blanking Flange(300mm) 2 Flange Adapter(300mm) 1 Washout+chamber(300mm) 1 Extension Piece(150mm) 1 Valve+chamber(150mm) 1 All Flanged Tee(300/80mm)
Point 2	1 All Flanged Tee(150/80mm) 2 Flange Adapter(150mm) 1 Flanged Fused Stub(150mm) 4 Flange Bend(150mm) 1 Ducthot Bend Flange(100mm)TDF 1 Washout+chamber(300mm)TDF 1 Flange Reducer(150/100mm)TDF
Point 3	1 All Flanged Tee(150/80mm) 1 Flanged Fused Stub(80mm) 1 Valve+chamber(80mm) 1 Ducthot Bend Flange(80mm)
Point 4	1 All Flanged Tee(150/80mm) 1 Flanged Fused Stub(80mm) 1 Valve+chamber(80mm)
Point 5	2 Flanged Fused Stub(150mm) 1 Flanged Fused Stub(80mm) 1 Flange Reducer(150/80mm) 1 Valve+chamber(80mm)
Point 6	1 All Flanged Tee(150/80mm) 1 Flanged Fused Stub(80mm) 1 Valve+chamber(80mm) 1 Washout+chamber(300mm) 1 Extension Piece(80mm)
Point 7	2 Flanged Fused Stub(150mm) 1 Flanged Fused Stub(80mm) 1 Valve+chamber(80mm) 1 Ducthot Bend Flange(80mm)
Point 8	2 All Flanged Tee(150/80mm) 2 Flanged Fused Stub(150mm) 1 Flanged Fused Stub(80mm) 1 Valve+chamber(80mm) 1 Washout+chamber(300mm)
Point 9	2 Flanged Fused Stub(150mm) 1 Flanged Fused Stub(80mm) 1 All Flanged Tee(150/80mm) 1 Flanged Fused Stub(150mm) 1 Valve+chamber(80mm)
Point 10	1 Flanged Fused Stub(80mm) 1 Ducthot Bend Flange(80mm) 1 Washout+chamber(300mm) 2 Flange Adapter(80mm)
Point 11	2 Flanged Fused Stub(80mm) 2 Blanking Flange(80mm) 1 Washout+chamber(300mm) 1 Flange Reducer(150/80mm) 1 Extension Piece(80mm)
Point 2.5	3 Flanged Fused Stub(150mm) 1 Blanking Flange(150mm) 1 Washout+chamber(300mm) 2 Valve+chamber(80mm) 2 Extension Piece(150mm) 1 All Flanged Tee(150/100mm) 1 All Flanged Tee(150/80mm)

MAINS LENGTH

Point 1.0 Point 2.0	4 METRES MP 180 SURFACE FI
Point 2.0 Point 3.0	57 METRES MP 180 SURFACE FI
Point 3.0 Point 4.0	54 METRES MP 90 SURFACE FI
Point 4.0 Point 5.0	30 METRES MP 90 SURFACE FI
Point 5.0 Point 6.0	109 METRES MP 90 SURFACE FI
Point 6.0 Point 7.0	241 METRES MP 180 SURFACE FI
Point 7.0 Point 8.0	241 METRES MP 90 SURFACE FI
Point 8.0 Point 9.0	277 METRES MP 180 SURFACE FI

CUSTOMER ATTENTION

THIS SITE IS DEEMED CONTAMINATED FOR THE USE OF PLASTIC PIPES.

STANDARD PLASTIC PIPEWORK IS NOT PERMITTED FOR UNDERGROUND WORK. A SUITABLE MATERIAL SUCH AS COPPER PIPE (BS6107/1985 STANDARD), OR AN APPROVED BARRIER PIPE MUST BE USED FOR ALL UNDERGROUND PIPEWORK.

- NOTES:**
- ALL DIMENSIONS TO BE POSITIONED NO MORE THAN 100mm FROM LAST DRAWN OFF POINT.
 - ALL PIPE ENDPOINTS TO BE INSTALLED TO BISTROPOSPONENTIAL OUTLET ONLY.
 - ALL FITTINGS & CONNECTIONS WITHIN UNDERGROUND SHOULD BE MADE OF AN APPROVED MATERIAL OR BE MADE OF COPPER WITH A MINIMUM OF 10% SILVER.
 - ALL OPEN ENDS OF PIPE MUST BE PROTECTED BY A SUITABLE MATERIAL SUCH AS COPPER PIPE (BS6107/1985 STANDARD), OR AN APPROVED BARRIER PIPE. THERE IS NO PROTECTION OF EXPOSED ENDS WHICH COULD RESULT IN FUTURE UNDERGROUND DAMAGE.
 - ALL UNDERGROUND SERVICES ARE TO BE INSTALLED IN ACCORDANCE WITH THE REPORT OF JOINT COMMITTEE ON LOCATION OF UNDERGROUND SERVICES PUBLISHED BY THE INSTITUTION OF CIVIL ENGINEERS.
 - IF THE ACTUAL USE AND DEPTH OF THE MAINS OF PIPE IS DIFFERENT TO THAT INDICATED IN THIS DRAWING, THE CUSTOMER IS RESPONSIBLE FOR NOTIFYING THE PLANNED BOUNDARY LINES AND LEVELS OF ALL ROADS, PATHS, ETC. IN WHICH MAINS ARE TO BE LAD.
 - THE CUSTOMER SHALL BE RESPONSIBLE FOR THE COSTS OF ANY SUBSEQUENT ALTERATIONS TO OUR APPARATUS.
 - EXISTENCES ON SITE MUST BE TAKEN INTO ACCOUNT ANY TOPOGRAPHIC VARIANCES.
 - PLEASE NOTE FITTINGS ARE NOT SHOWN TO SCALE.
 - ALL OUTLET RISERS MUST BE TO BE INSTALLED UNLESS OTHERWISE SPECIFIED.
 - STRENGTHENING IS TO BE INSTALLED AT A MINIMUM DEPTH WITHIN THE MINIMUM NUMBER OF SPANS REQUIRED AND TO BE LAD IN A DIRECT ROUTE AS FAR AS PRACTICALLY POSSIBLE.
 - THE POSITION OF ANY BOUNDARY OR APPARATUS SHOWN ON THIS PLAN IS GIVEN WITHOUT OBLIGATION AND WITHOUT WARRANTY AND ACCURACY CAN ONLY BE CONFIRMED BY A VISUAL INSPECTION AND ACCEPTED BY THAMES WATER AFTER ANY ERROR OR OMISSION.

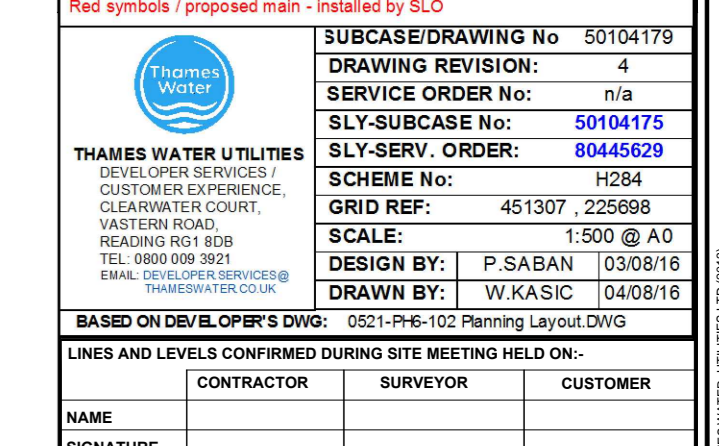
REVISIONS

NO.	DESCRIPTION	DATE
4	CHANGED DESIGN	11/01/24
3	REVISED - ADDED PH. METER & NRV	11/01/24
2	REVISED	11/01/24
1	FOR INFORMATION	11/01/24

SITE LOCATION: PHASE 5, CAMP RD UPPER HEYFORD OX5 5HD

MATERIALS

MATERIAL: BARRIER PIPE	DI: 180mm	LENGTH: 454m
MATERIAL: BARRIER PIPE	DI: 90mm	LENGTH: 374m
MATERIAL:	DI: mm	LENGTH: m
MATERIAL:	DI: mm	LENGTH: m



BASED ON: CIVIL/PL/015/DWG/001

DATE: 13/01/2024

CAD FILE: 13012024