

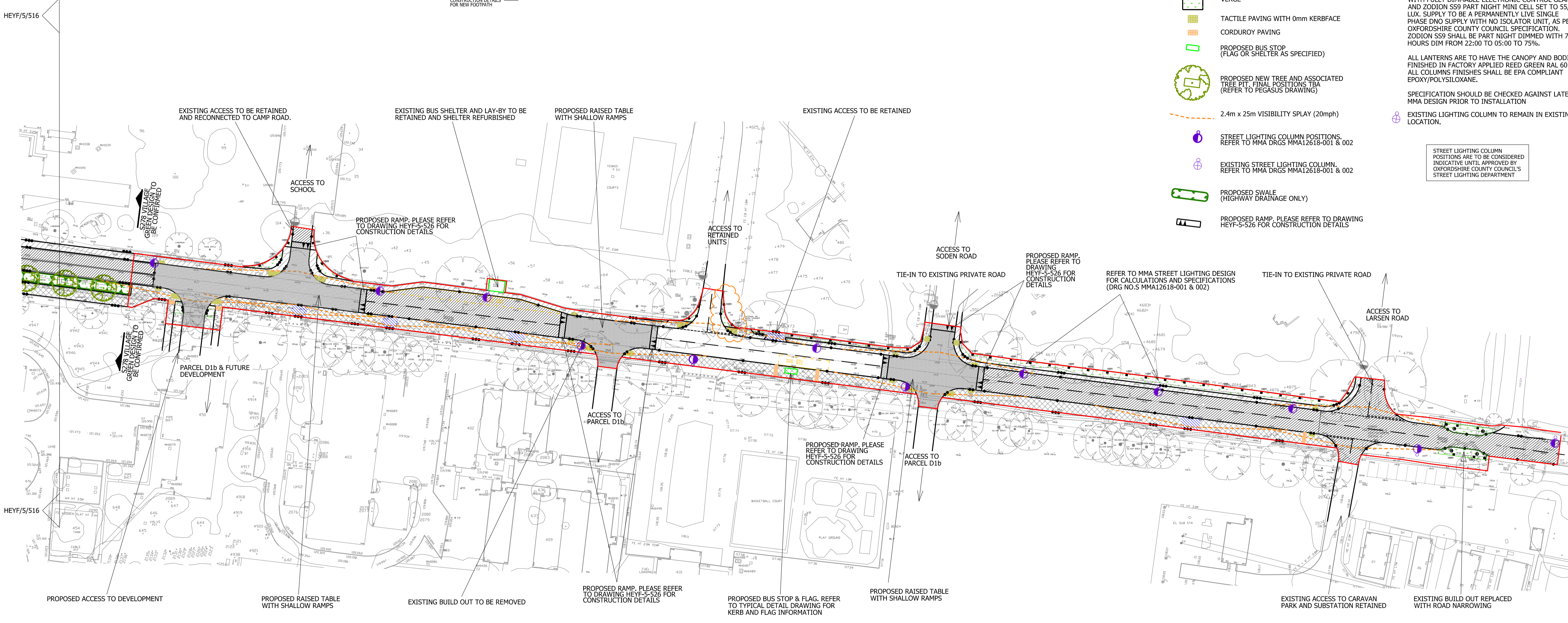
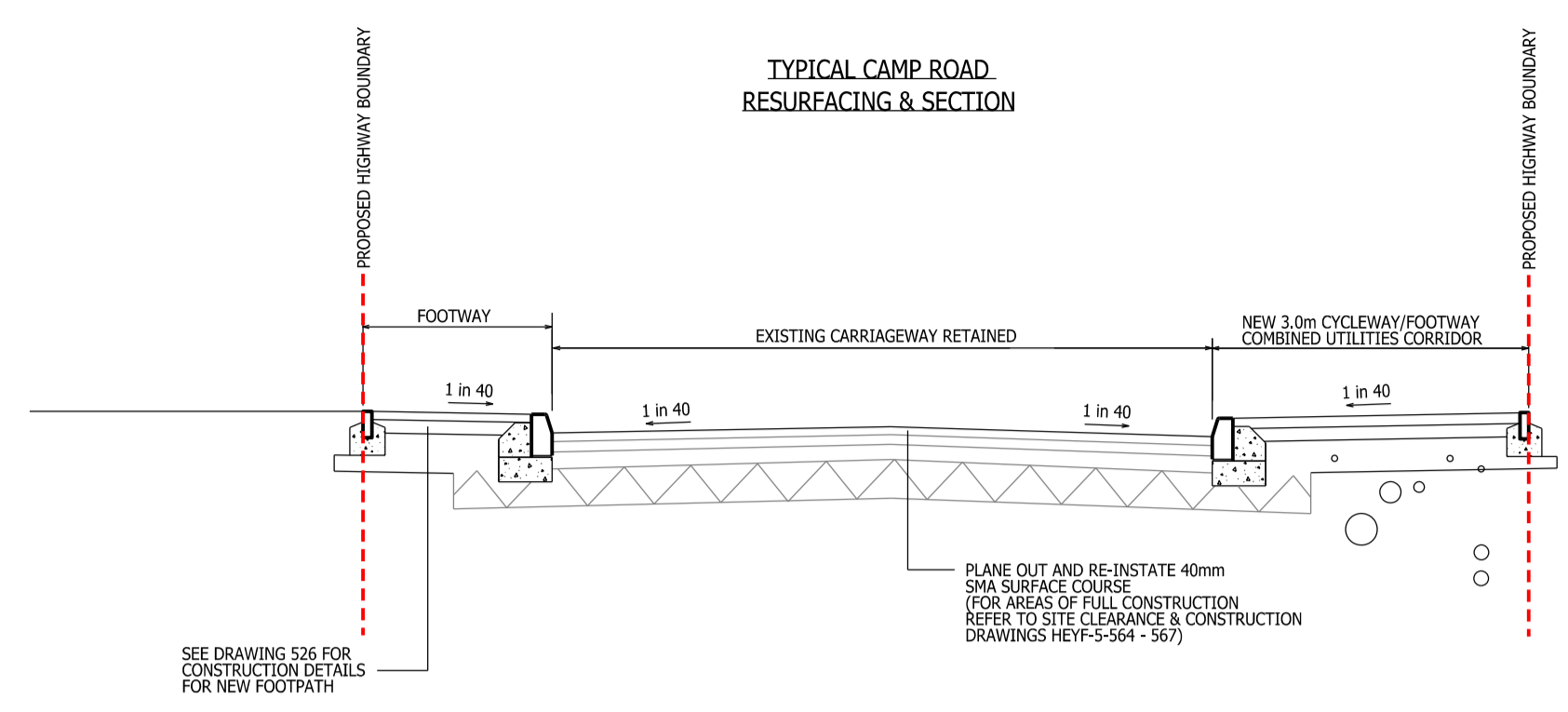
- S278 WORKS BOUNDARY
- HALF BATTERED KERB 125 x 255mm (HB2) 120mm UPSTAND
- BULLNOSE KERB 125 x 150mm (BN) 25mm UPSTAND
- EDGING KERB 150 x 50mm (EF) 0mm UPSTAND
- BULLNOSE KERB ON END (BN) 0mm UPSTAND
- CHANNEL KERB
- BLOCK PAVE RAMP & MARKINGS
- BITUMINOUS CARRIAGEWAY
- BLOCK PAVE CARRIAGEWAY
- BITUMINOUS FOOTWAY
- BITUMINOUS SHARED FOOTWAY / CYCLEWAY (UNSEGREGATED)
- VEHICULAR CROSS OVER
- VERGE
- TACTILE PAVING WITH 0mm KERBFACE
- CORDUROY PAVING
- PROPOSED BUS STOP (FLAG OR SHELTER AS SPECIFIED)
- PROPOSED NEW TREE AND ASSOCIATED TREE PIT. FINAL POSITIONS TBA (REFER TO PEGASUS DRAWING)
- 2.4m x 25m VISIBILITY SPLAY (20mph)
- STREET LIGHTING COLUMN POSITIONS. REFER TO MMA DRGS MMA12618-001 & 002
- EXISTING STREET LIGHTING COLUMN. REFER TO MMA DRGS MMA12618-001 & 002
- PROPOSED SWALE (HIGHWAY DRAINAGE ONLY)
- PROPOSED RAMP. PLEASE REFER TO DRAWING HEYF-5-526 FOR CONSTRUCTION DETAILS

- CONTRACTORS MUST CHECK ALL DIMENSIONS ON SITE. ONLY FIGURED DIMENSIONS ARE TO BE WORKED FROM. DISCREPANCIES MUST BE REPORTED TO THE ARCHITECT OR ENGINEER BEFORE PROCEEDING. © THIS DRAWING IS COPYRIGHT .
- REPRODUCED FROM OS SITEMAP © BY PERMISSION OF ORDNANCE SURVEY® ON BEHALF OF THE CONTROLLER OF HER MAJESTY'S STATIONERY OFFICE. © CROWN COPYRIGHT 2008. ALL RIGHTS RESERVED. LICENCE NUMBER 100007126.
- ALL EXISTING BUILDINGS AND HARD/SOFT LANDSCAPED AREAS WITHIN LIMITS OF S278 WORKS TO BE GRUBBED UP.
- ALL VISIBILITY SPLAYS IN ACCORDANCE WITH MANUAL FOR STREETS. ACTUAL TRAFFIC SPEEDS ASSUMED TO BE 20MPH REDUCING TO 10MPH AT FEATURES.

STREET LIGHTING KEY

- PROPOSED 6m CONICAL "AVON" STAINTON STEEL LIGHTING COLUMN AS PER OCC STANDARD LIGHTING COLUMN SPECIFICATION (SPECIFICATION SUPPLIED WITH DESIGN PACK) WITH A WRTL LUMA 2-60 GREEN LANTERN. MOUNTING HEIGHT 8M. LANTERN COMPLETE WITH FULLY DIMMABLE ELECTRONIC CONTROL GEAR AND ZODION SS9 PART NIGHT MINI CELL SET TO 55/28 LUX. SUPPLY TO BE A PERMANENTLY LIVE SINGLE PHASE DNO SUPPLY WITH NO ISOLATOR UNIT, AS PER OXFORDSHIRE COUNTY COUNCIL SPECIFICATION ZODION SS9 SHALL BE PART NIGHT DIMMED WITH 7 HOURS DIM FROM 22:00 TO 05:00 TO 75%.
- ALL LANTERNS ARE TO HAVE THE CANOPY AND BODIES FINISHED IN FACTORY APPLIED REED GREEN RAL 6013. ALL COLUMNS FINISHES SHALL BE EPA COMPLIANT EPOXY/POLYSILOXANE.
- SPECIFICATION SHOULD BE CHECKED AGAINST LATEST MMA DESIGN PRIOR TO INSTALLATION
- EXISTING LIGHTING COLUMN TO REMAIN IN EXISTING LOCATION.

STREET LIGHTING COLUMN POSITIONS ARE TO BE CONSIDERED INDICATIVE UNTIL APPROVED BY OXFORDSHIRE COUNTY COUNCIL'S STREET LIGHTING DEPARTMENT



Key Plan



R	BUS STOP LOCATION NOTE UPDATED	AT	JF	10-08-2018
Q	CONSTRUCTION ISSUE	CG	AT	13-05-2015
P	STREET LIGHTING REVISED TO SUIT MMA DRAWINGS 12618-001-R5 AND 12618-002-R5	AT	JF	23-04-2015
N	BOUNDARY UPDATED TO SUIT CLIENT COMMENTS AROUND ACCESS EAST OF TENNIS COURTS	AT	JF	30-01-2015
M	STREET LIGHTING NOTE ADDED	CG	AT	27-01-2015
L	DRAWING UPDATED TO SUIT OCC S278 COMMENTS	CG	AT	26-11-2014
K	DRAWING UPDATED TO SUIT OCC COMMENTS DATED 10.10.14	CG	AT	21-10-2014
J	STREET LIGHTING UPDATED	SD	JGF	06-05-2014
H	ACCESS ROAD RAMP INCLUDED WITHIN S278, NOTE AMENDMENTS & MINOR ADJUSTMENTS	SD	JGF	10-03-2014
G	UPDATED TO SUIT LATEST CAMP ROAD PROPOSALS	SD	JGF	25-02-2014
F	LENGTH OF SWALE REMOVED TO SOUTH OF CAMP ROAD	AT	JGF	17-12-2013
E	UPDATED TO SUIT LATEST CAMP ROAD LAYOUT	SD	JGF	03-10-2013
D	LAYOUT REVISED TO SUIT ADJACENT PARCEL PROPOSALS	SD	JGF	28-08-2013
C	ADDITIONAL NOTES & UPDATED TO SUIT LATEST LAYOUT	SD	JGF	18-07-2013
B	VERGES WIDENED, SWALES AND INDICATIVE TREE POSITIONS ADDED. TYPICAL	SD	JGF	20-06-2013
A	SECTION ADDED TO DRAWING REVISED FOR S278 SUBMISSION	SD	JGF	05-06-2013

Revision	Description	Drawn	Checked	Date
Preliminary	Information	Tender	Construction	As Built

**Woods Hardwick**  
Architects, Engineers and Development Consultants

Title: UPPER HEYFORD  
 Details: CAMP ROAD S278 SURFACE FINISHES (4 OF 4)  
 Scale: 1:500 @ A1 Date: MAY 2013 Drawn: JGF Chk: IDB

