

This drawing includes map data licensed from Ordnance Survey, © Crown copyright and database rights 2013 Ordnance Survey 0100040692.

Legend/Notes

KEY

- TWA PLANNING APPLICATION BOUNDARY
- 2.0m HIGH PALLISADE FENCE
- PROPOSED 1.8m HIGH WELDMESH FENCE TOPPED WITH BARBED WIRE
- PROPOSED 1.4m HIGH POST AND RAIL FENCE
- BARRIER. SEE NOTE 8
- PROPOSED PALLISADE GATE
- GABION WALL
- LANDSCAPE
- PROPOSED CONCRETE CARRIAGEWAY
- EXISTING OVERHEAD HV CABLE (TO REMAIN)
- EXISTING OVERHEAD HV CABLE TO BE DIVERTED
- INDICATIVE POSITION OF PROPOSED UNDERGROUND HV CABLE.
- 6m LIGHTING COLUMN
- 900mm LIGHTING BOLLARD
- WALL MOUNTED LIGHTING

NOTES

1. ALL DIMENSIONS ARE IN METRES UNLESS NOTED OTHERWISE.
2. DO NOT SCALE.
3. THIS DRAWING IS BASED UPON ORDNANCE SURVEY MAPPING, AERIAL SURVEY DATA AND TOPOGRAPHICAL SURVEY DATA.
4. DESIGN OF JUNCTION BY NR BDG. REFER TO DRAWINGS FOR OXFORD PARKWAY.
5. VERGE TO ACCOMMODATE YARD DRAINAGE, BEHIND SAFETY BARRIER.
6. FOR SSE DIVERSION DETAILS REFER TO SSE DESIGN AND DETAILS.
7. TRACK ALIGNMENT HAS BEEN TAKEN FROM MODEL 5114534-ATK-MOD-TR-000052.
8. EXISTING CULVERTS TO BE EXTENDED ACROSS SITE. EXACT POSITION AND LEVEL TO BE CONFIRMED.
9. FOR SECTIONS B-B AND C-C REFER TO DRAWING 511434-ATK-DRG-MD-706003

Rev	Date	Description of Revisions	Drawn	Chkd	Appr
P03	21/01/13	SCALE BARS ADDED	ST	SM	PH
P02	20/12/13	WHEELWASH REMOVED	SJ	DPS	KW
P01	06/12/13	FOR PLANNING	NJ	DPS	KW

FOR PLANNING

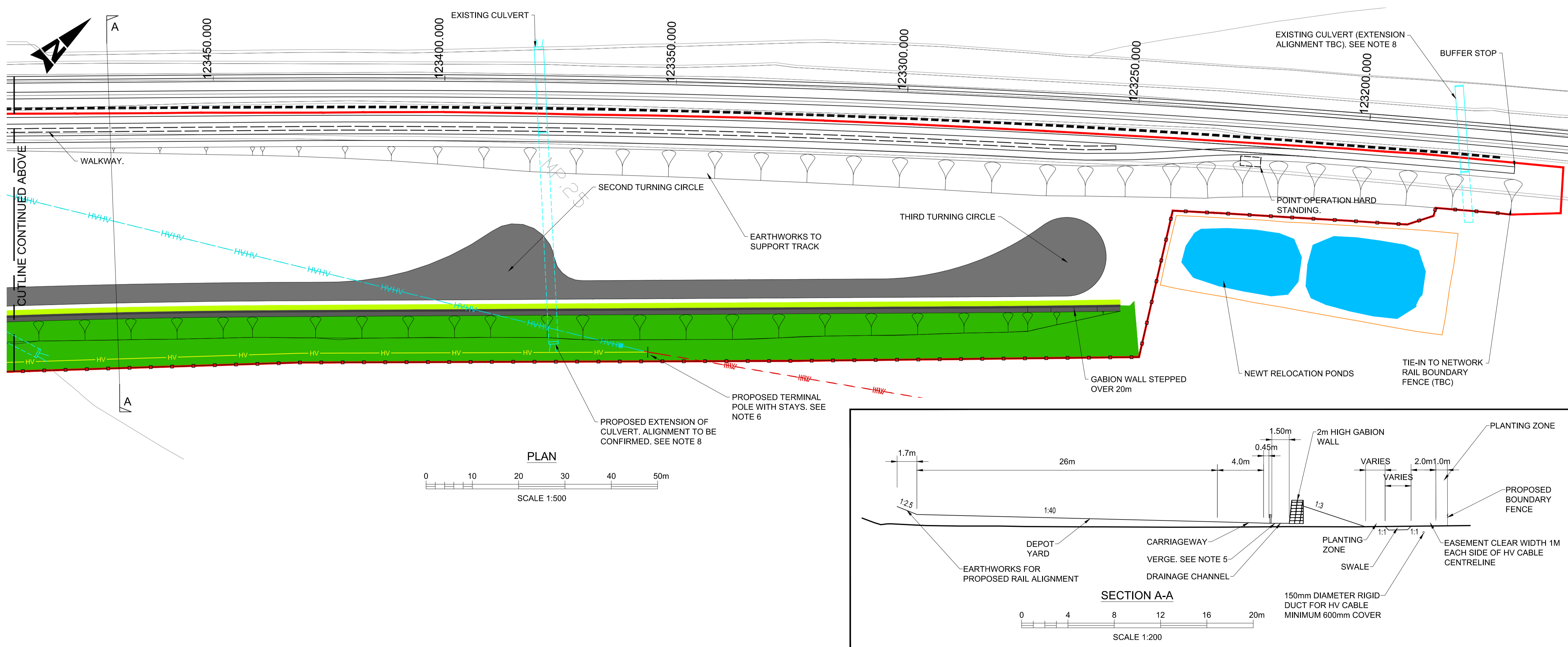
Chiltern Railways

Marylebone Station, Great Central House, Melcombe Place, London, NW1 5JL

ATKINS

The Axis
10 Holliday Street
Birmingham
West Midlands
B1 1TF

Tel: +44 (0)121 483 5000
Fax: +44 (0)121 483 6333



FOR PLANNING

Chiltern Railways

Marylebone Station, Great Central House, Melcombe Place, London, NW1 5JL

ATKINS

The Axis
10 Holliday Street
Birmingham
West Midlands
B1 1TF

Tel: +44 (0)121 483 5000
Fax: +44 (0)121 483 6333

EAST WEST RAIL PHASE 1

**BANBURY ROAD SIDINGS
PROPOSED GA
FOR PLANNING**

Design	Signed	Date
SHAUN JOYCE	Signed	06/12/13
Drawn	Signed	Date
NIGEL JONES	Signed	06/12/13
Checked	Signed	Date
DARREN SALMONS	Signed	06/12/13
Approved	Signed	Date
KAREN WOOD	Signed	06/12/13

Scale(s) AS SHOWN AT A1 ELR & Mileage

Alternative Reference Sheet 1 of 1

Drawing Number 5114534-ATK-DRG-MD-706002 P03