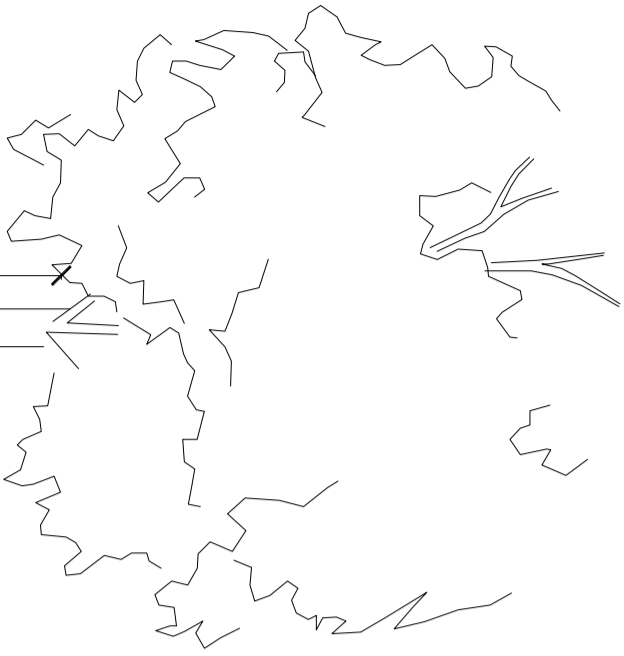
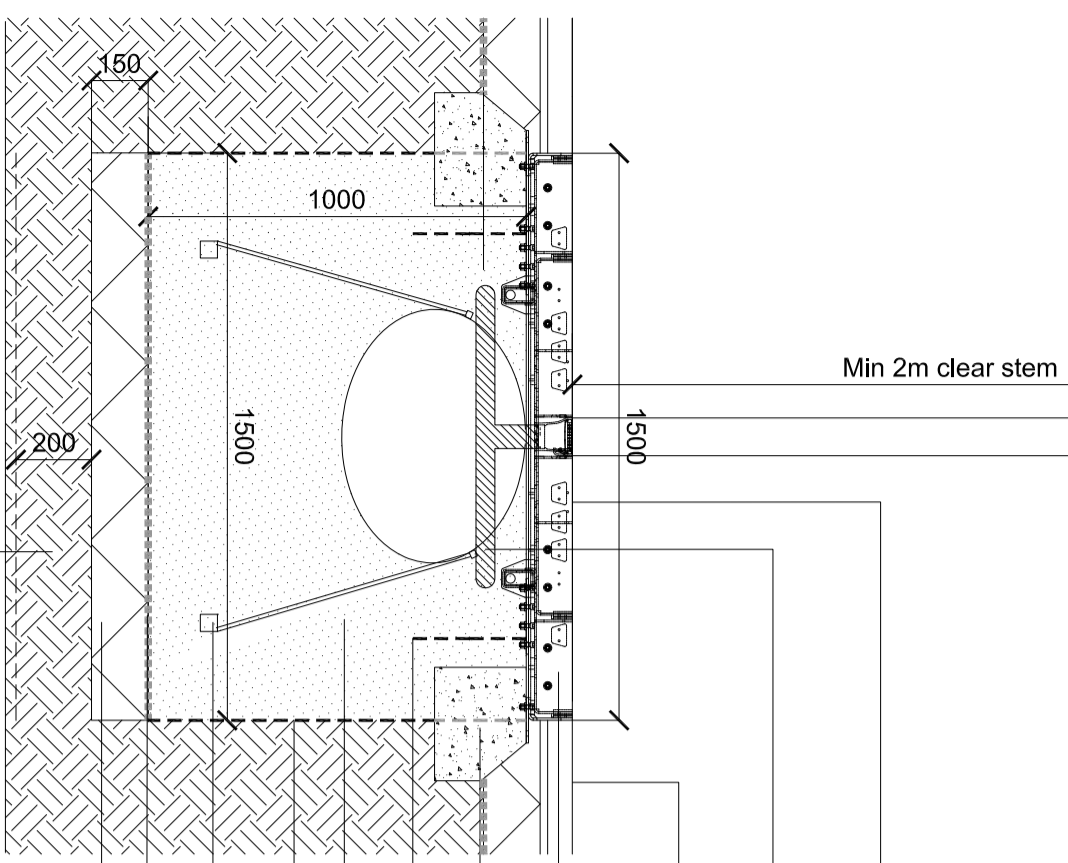


Isometric View
1500mm Castle tree grille
Single tray (or similar approved)



Trees species / specification as planting schedule



- Removable inner section to allow for tree growth
- Greenleaf Arborvent irrigation and aeration system or similar approved to engineers specification
- Footway material - construction to engineers specification
- Greenleaf Castle integrated tree grille or similar approved, filled with footway material
- Concrete foundation to tree grille to manufacturers requirements
- Root barrier, Greenleaf Ferroot 300 or similar approved. Ribs facing tree. Laid 200mm offset from football
- Compacted Urban tree soil - Greenleaf Arborsoil or similar approved
- Root Barrier if tree pit within 6,000mm of underground services or kerbs - Greenleaf 'Reeroot 2000' in 1,000 or 1,500mm height*
- Underground Guying - Greenleaf Aboroguy Tree guying system or similar approved
- Geotextile membrane. Terram 1000 or similar approved
- 150mm clear washed stone to be included as necessary. 40mm single sized washed stone. no fines - each pit to be inspected following excavation to assess soil conditions and need for drainage layer.
- Subgrade - perforate to 200mm
- Bedrock approx 1200 to 1750mm below ground

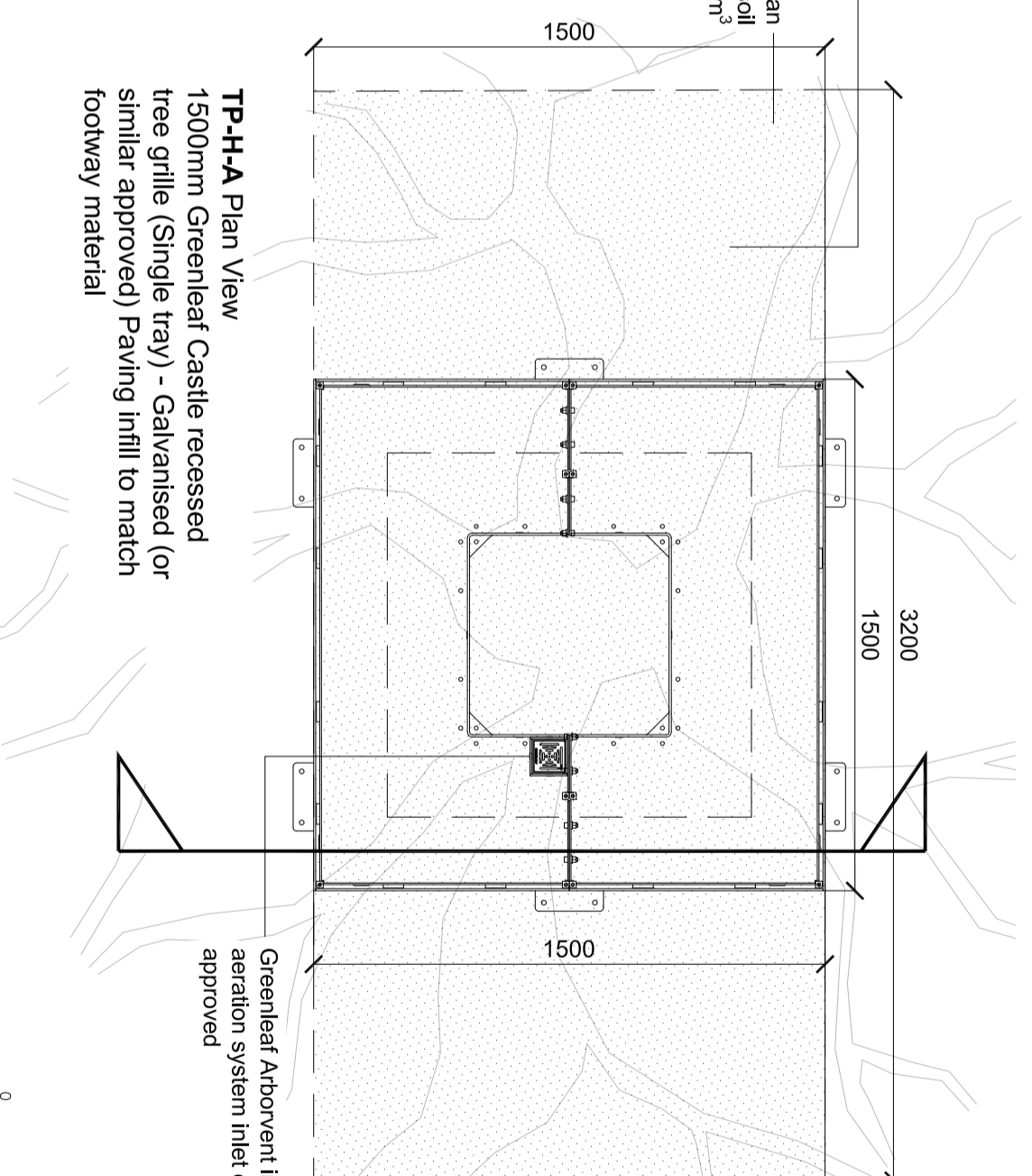
TP-H-A Tree pit detail: Primary Road - Castle tree grille (or similar approved)

*Root Barrier height to be determined on site depending on depth of adjacent services/structure to be protected. Root barrier must extend beyond depth of feature.

100mm on Original

Tree Pit Details
Type: Greenleaf Castle Tree Grille (Single tray)
Material: Segments: Mild steel
Frame: Galvanizer mild steel
Fittings: Stainless steel
Finish: Segments and Frame - Galvanized to BSEN 146 1999
Colour: Galvanized

All Construction to Manufacturers' recommendations
All products are or similar approved
For details of pit locations see drawings UA001884-701-114 to 116
Tree pit volume and use of structural tree soil in accordance with instruction from client agent following meeting between Silver, WDH and CDC on 20-06-14 and subsequent email from Silver dated 03-07-14.
Trees to be planted within the planting season (usually mid November to late March, dependant on suitable climatic conditions).



TP-H-A Plan View
1500mm Greenleaf Castle recessed tree grille (Single tray) - Galvanised (or similar approved) Paving infill to match footway material

0 400 800mm
1 : 20

12	Revert to consented design, with updates	19-10-15
11	Annotation revision	04-06-15
10	Root barrier notes and Rr 300 added. Depth/width ratio revised. notes added	26-09-14
09	Revert to previous design - section line added	19-08-14
08	Tree pit redesign-CDC comments	14-04-2014
07	Phase 1 details removed	22-08-2013
06	Annotation updated. granite setts added	16-08-2013
05	Annotation amendment	31-01-2013
04	Annotation amendment	11-01-13
03	Foundation to tree hoop altered	14-12-12
02	Or similar approve added to named products. Additional detail added	01-10-12
01	DRAFT	06-09-12

Status
PLANNING
NOT FOR CONSTRUCTION

Scales	1: 20	Current Issue	Signatures
Original Size	A2	Checker	A.VICTORY
Height Datum	DATUM	Approver	R.KITCH
Grid	GRID	©	Copyright reserved

Filename: UA001884-701-800 TREE PIT DETAILS - HARDING
Client



Hyder
HYDER CONSULTING (UK) Limited
5th Floor, The Pitway
All Saints Street
Bristol, England
BS1 2NL
Tel: +44 (0)870 000 3903
Fax: +44 (0)870 000 3903

Project
Bicester Eco
Development

Title
Tree Pit Details
Hard

Drawing No. | Project No. | Issue
701-800 - UA001884 12