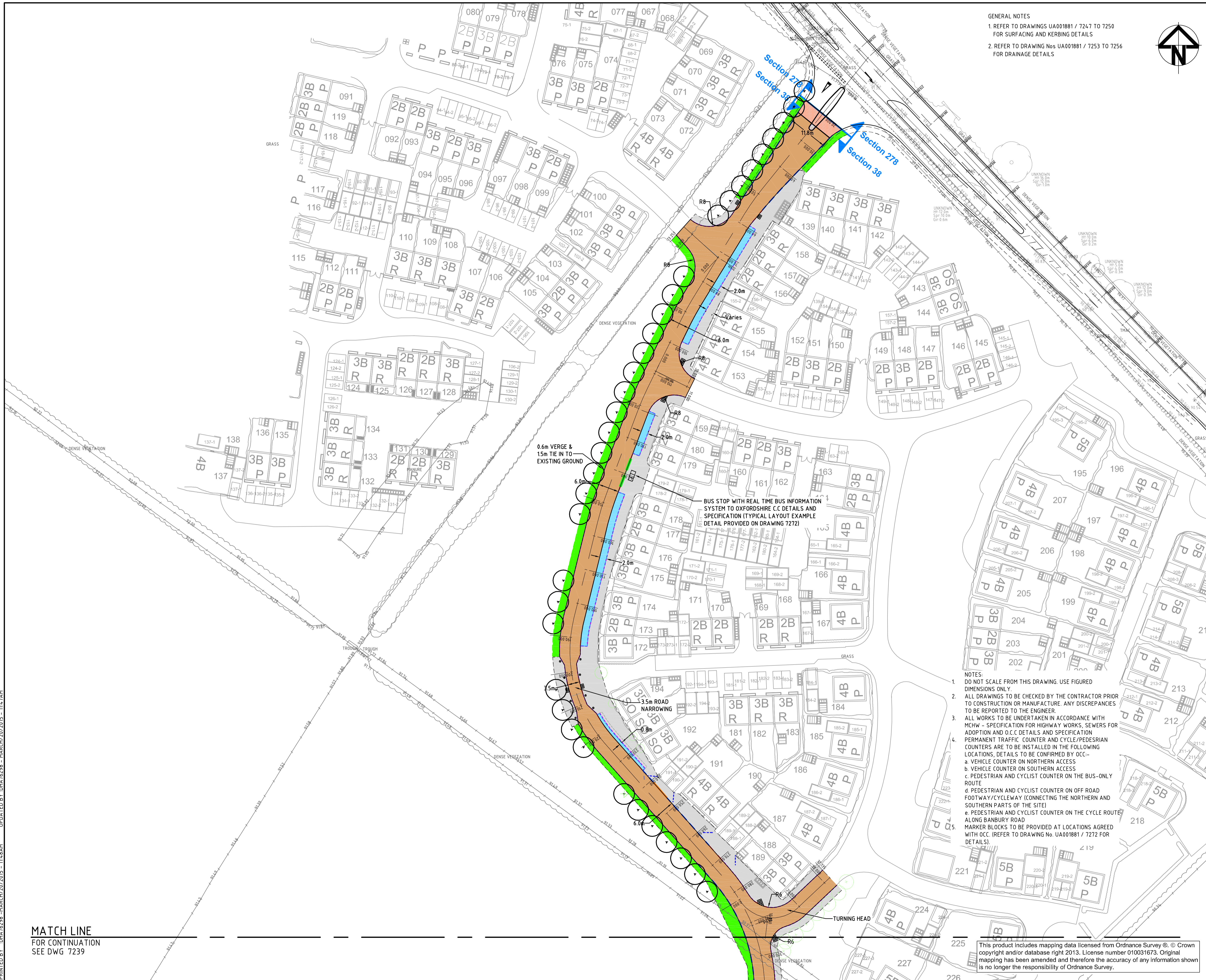
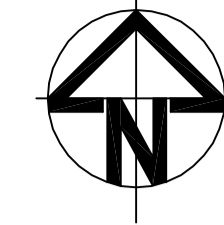


CAD FILE: K:\UA001881_BicesterEco\Current\Civil Engineering\7238-7241-UA001881-UP210-S38-E-GENERAL_ARRANGEMENT_IPDS_MATCHI.dwg
 PRINTED BY: DHA16298 -MARCH/2015 - 11:48AM



GENERAL NOTES
 1. REFER TO DRAWINGS UA001881 / 7247 TO 7250 FOR SURFACING AND KERBING DETAILS
 2. REFER TO DRAWING Nos UA001881 / 7253 TO 7256 FOR DRAINAGE DETAILS



| KEY | |
|-----|---|
| | PROPOSED ADOPTABLE CARRIAGEWAY |
| | PROPOSED ADOPTABLE FOOTWAY |
| | PROPOSED COMMUNITY FOOTPATH |
| | PROPOSED ADOPTABLE VERGE |
| | PROPOSED ADOPTABLE ROADSIDE SUDS FEATURE |
| | PROPOSED SUDS/POND FEATURE |
| | POND MAINTENANCE ACCESS (3.0m Wide) |
| | PROPOSED COMMUNITY STREET CONNECTION |
| | GATEWAY FEATURE (DETAIL IN ABEYANCE) |
| | VISIBILITY SPLAY - CONDITIONED RELATING TO HOUSEHOLD COVENANT |
| | FOOTWAY VEHICULAR CROSSING |
| | UNCONTROLLED CROSSING POINT |
| | 4.0m FORWARD VISIBILITY SPLAY |
| | 2.4m x 33m VISIBILITY SPLAY |
| | 2m x 2m VISIBILITY SPLAY |
| | PROPOSED BOLLARD (REFER TO O.C.C. DRAWING No. HSD/1200/220 FOR DETAILS) |
| | PROPOSED TREE AND TREE PIT (REFER TO DRAWING Nos. UA001881-701-800 AND 701-801 FOR DETAILS) |
| | FULLY ENCLOSED 3 BAY PASSENGER SHELTER, DETAILS T.B.C BY OXFORDSHIRE C.C. |
| | FOOTWAY EDGING |
| | DROP KERB TYPE |
| | STANDARD KERB 125mm UPSTAND GENERAL |
| | KASSEL KERB |
| | FLUSH KERB TYPE |
| | KERB DRAINAGE BLOCK |
| | DROPPED KERB DRAINAGE BLOCK |

| Issue | Description | Date |
|-------|--|-----------|
| E | BASE PLAN UPDATED | 20/03/15 |
| D | NOTES ADDED | 17/04/14 |
| C | GENERAL REVISIONS | 04/04/14 |
| B | MINOR REVISIONS | 11/03/14 |
| A | CONSTRUCTION ISSUE | 09/08/13 |
| 11 | TREE LAYOUT REVISED | 25/03/13 |
| 10 | HIGHWAY BOUNDARY REVISED | 06/11/12 |
| 09 | SPINE ROAD TREE LAYOUT REVISED | 26/10/12 |
| 08 | GENERAL REVISIONS | 19/10/12 |
| 07 | MINOR REVISIONS | 27/07/12 |
| 06 | REVISED TO OCC COMMENTS | MAR 12 |
| 05 | CARRIAGEWAY WIDTHS & BUS STOPS REVISED | 02 Dec 11 |

| FOR CONSTRUCTION | | |
|------------------|-------|---------------------|
| Scales | 1:500 | Author M.LLEWELIN |
| Original Size | A1 | Checker S.A.DAVIES |
| Height Datum | O.S. | Approver S.A.DAVIES |
| Grid | O.S. | Copyright reserved |

Client: UA001881-UP210-S38-E-GENERAL ARRANGEMENT (PDS MATCHI)



Hyder Consulting (UK) Limited
 HCL House
 St. Mellons Business Park
 Fortran Road, St Mellons
 Cardiff
 CF3 0EY
 Tel: +44 029 20926700
 Fax: +44 029 20925222

Project: BICESTER ECO DEVELOPMENT EXEMPLAR SITE

Title: SPINE ROAD (S38) GENERAL ARRANGEMENT SHEET 1 OF 4

Drawing No. 7238 Project No. UA001881 Issue E

- NOTES:
- DO NOT SCALE FROM THIS DRAWING. USE FIGURED DIMENSIONS ONLY.
 - ALL DRAWINGS TO BE CHECKED BY THE CONTRACTOR PRIOR TO CONSTRUCTION OR MANUFACTURE. ANY DISCREPANCIES TO BE REPORTED TO THE ENGINEER.
 - ALL WORKS TO BE UNDERTAKEN IN ACCORDANCE WITH MCHW - SPECIFICATION FOR HIGHWAY WORKS. SEWERS FOR ADOPTION AND O.C.C. DETAILS AND SPECIFICATION PERMANENT TRAFFIC COUNTER AND CYCLE/PEDESTRIAN COUNTERS ARE TO BE INSTALLED IN THE FOLLOWING LOCATIONS. DETAILS TO BE CONFIRMED BY OCC--
 a. VEHICLE COUNTER ON NORTHERN ACCESS
 b. VEHICLE COUNTER ON SOUTHERN ACCESS
 c. PEDESTRIAN AND CYCLIST COUNTER ON THE BUS-ONLY ROUTE
 d. PEDESTRIAN AND CYCLIST COUNTER ON OFF ROAD FOOTWAY/CYCLEWAY (CONNECTING THE NORTHERN AND SOUTHERN PARTS OF THE SITE)
 e. PEDESTRIAN AND CYCLIST COUNTER ON THE CYCLE ROUTE ALONG BANBURY ROAD
 - MARKER BLOCKS TO BE PROVIDED AT LOCATIONS AGREED WITH OCC (REFER TO DRAWING No. UA001881 / 7272 FOR DETAILS).

MATCH LINE
 FOR CONTINUATION
 SEE DWG 7239

This product includes mapping data licensed from Ordnance Survey © Crown copyright and/or database right 2013. License number 010031673. Original mapping has been amended and therefore the accuracy of any information shown is no longer the responsibility of Ordnance Survey.