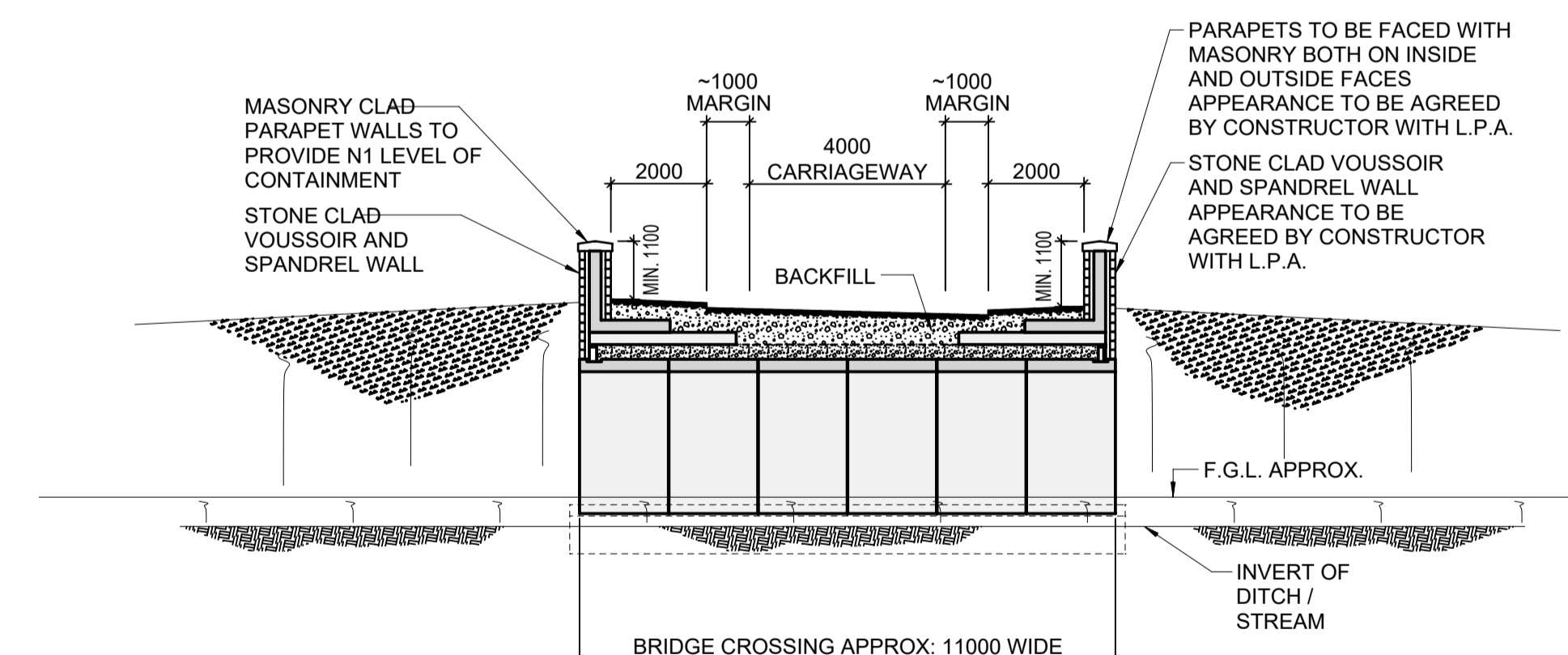
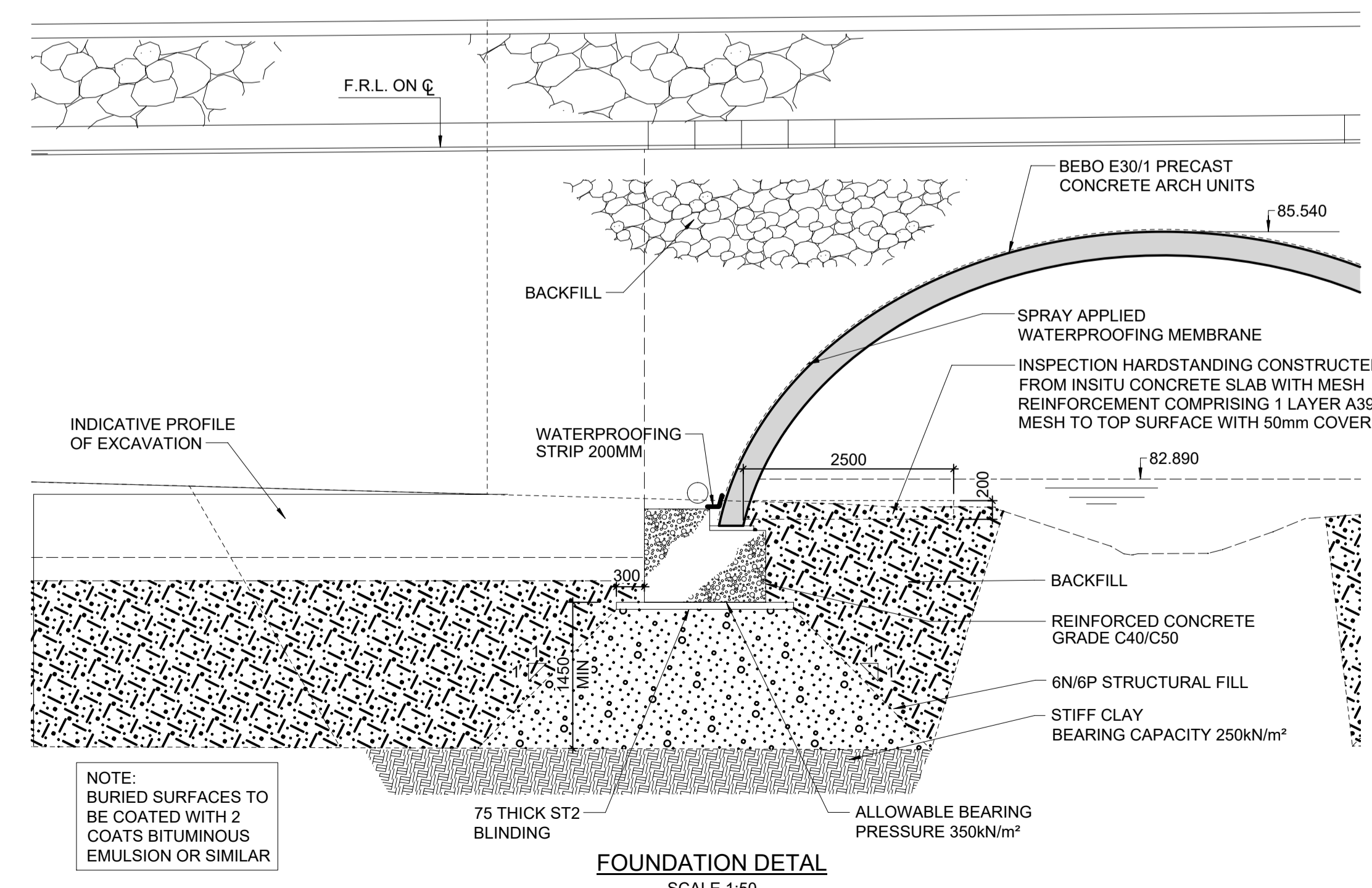


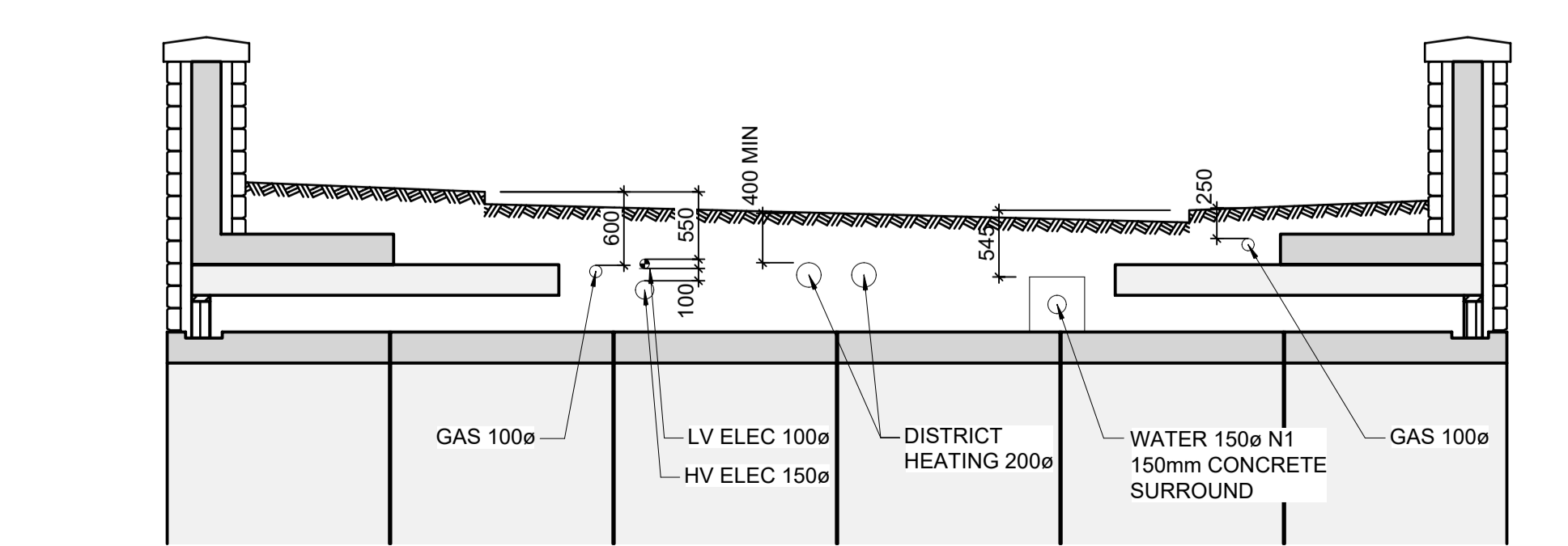
ELEVATION A-A
SCALE 1:100



SECTION B-B
SCALE 1:125



FOUNDATION DETAIL
SCALE 1:50



SECTION B-B - SERVICE DETAILS
SCALE 1:50
(REFER TO DRAWINGS UA001881/7257 TO 7260 FOR FURTHER DETAILS OF SERVICES)

NOTE:
DO NOT SCALE FROM THIS DRAWING. ALL DIMENSIONS ARE IN MILLIMETRES. LEVELS ARE IN METRES ABOVE ORDINANCE DATUM. SCALES REFER TO PLOTS ON DRAWING SIZE SPECIFIED BELOW.

CONFIDENTIAL
SOME PARTS OF THE BEBO SYSTEM ARE PATENTED IN THE UK AND IRELAND. FURNISHING OF THESE DRAWINGS AND SPECIFICATIONS DOES NOT CONSTITUTE AN EXPRESS OR IMPLIED LICENSE TO USE THESE DRAWINGS AND SPECIFICATIONS AND PATENTS.
THE DRAWINGS AND SPECIFICATIONS, HEREIN, CONTAIN PROPRIETARY INFORMATION. THEY ARE THE EXCLUSIVE CONFIDENTIAL PROPERTY OF BEBO ARCH INTERNATIONAL AG. AND COPYING, DISCLOSURES TO OTHERS, OR OTHER USE IS PROHIBITED WITHOUT THE EXPRESS WRITTEN AUTHORIZATION OF BEBO ARCH INTERNATIONAL AG.
ALL RIGHTS RESERVED.

| Rev | Description |
|-----|--------------------|
| 7 | Comments addressed |
| 8 | Plaster revised |

| | | |
|--|--|---|
| | BEBO Arch International AG Witikonstrasse 15 CH-8032 Zurich Switzerland T: +41 43 501 04 50 F: +41 43 268 96 71 techcenter@beboarch.com www.beboarch.com | Stephenson Street, Newport, NP19 4XH T: 01633 637513, F: 01633 290519 rich@assetint.co.uk, www.assetint.co.uk |
| | BEBO SYSTEM | |

BICESTER ECO TOWN
 (CROSSING 2)
GENERAL ARRANGEMENT (E30/1)

OVERVIEW AND SECTIONS
ISSUED FOR CONSTRUCTION

| Rev | Date | Drawn | Checked | Size | File # | Document # |
|-----|---------------|----------|---------|------------|------------|--|
| | 02 June 2014 | P. Weber | R. Arn | A1 594x840 | Z004-T5041 | 6217-148_E30/004 Revision 08 |
| 07 | 26 March 2015 | P. Weber | R. Arn | A1 594x840 | Z004-T5041 | |
| 08 | 23 Sept 2015 | G. Nick | R. Arn | A1 594x840 | Z004-T5041 | |