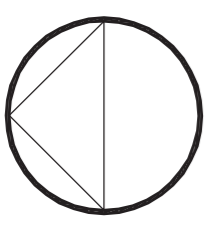


NOTES:  
Based upon the Ordnance Survey map with permission of The Controller of Her Majesty's Stationery Office, London.  
Aspect Landscape Planning Ltd, West Court, Hazwick Business Park, Nott Way, Emsay CV93 2AF.  
License 100045046

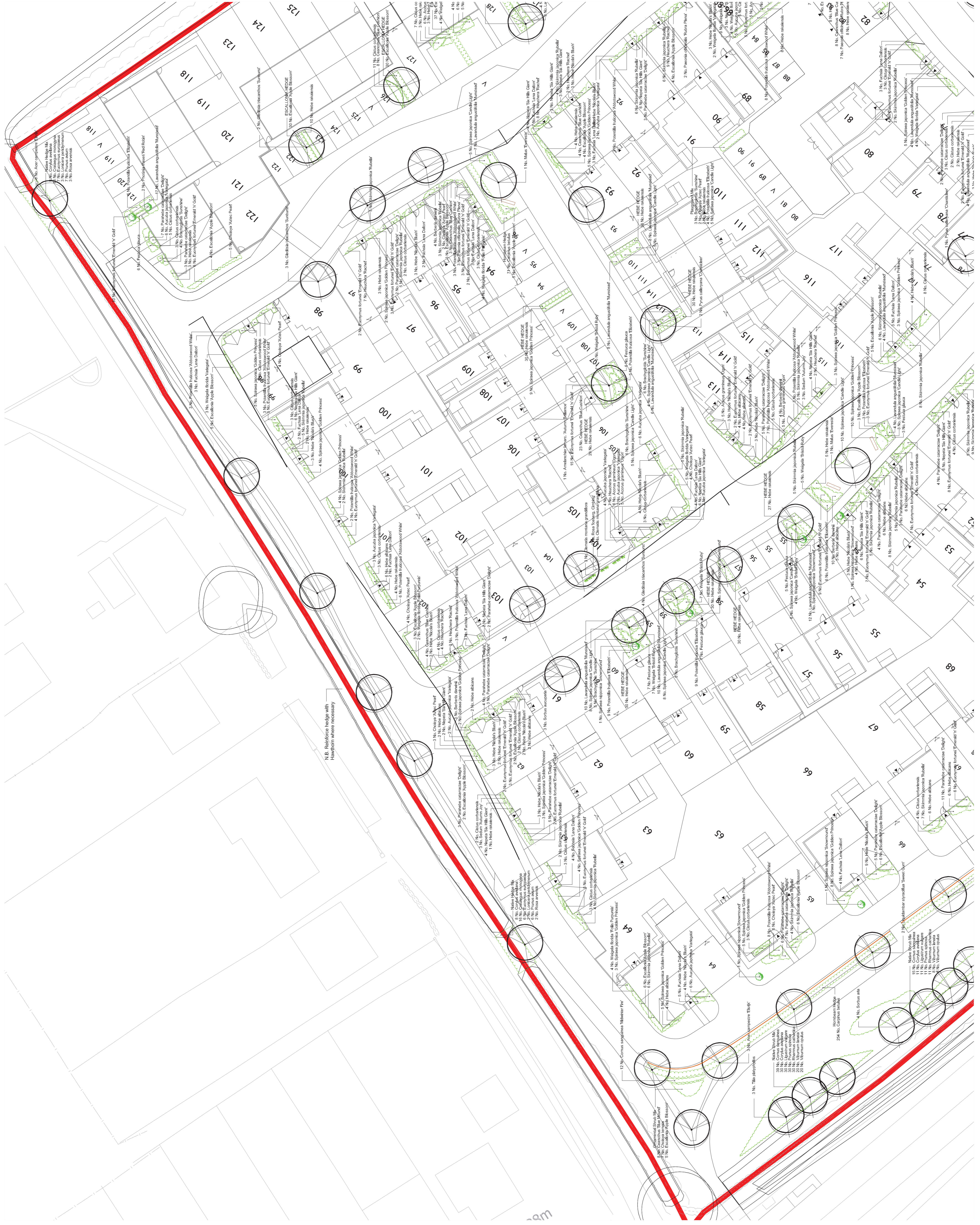


No dimensions to be scaled from this drawing.

0m 2m 4m 10m

KEY:

- Site Boundary
- Existing Trees
- Existing Shrubs
- Proposed Trees
- Proposed Hedge
- Proposed Feature Shrub
- Proposed Shrubs
- Proposed Climbers



PLANTING NOTES  
All plants must be planted in accordance with BS5836, Delivery and handling of plants, and must be planted in accordance with BS5836, Code of Practice for health and safety of workers on sites.  
All plants must be planted in accordance with BS5836, Code of Practice for health and safety of workers on sites.  
All plants must be planted in accordance with BS5836, Code of Practice for health and safety of workers on sites.  
All plants must be planted in accordance with BS5836, Code of Practice for health and safety of workers on sites.

REV.	DATE	NOTE
F	13.09.2014	Tree to add 110 footage removed
E	13.09.2014	Updated to comments from Local Authority
D	27.01.2014	Updated to latest comments and base
C	27.09.2013	Updated to latest comments and base
B	16.09.2013	Updated to latest comments and base
A		

aspect landscape planning

TITLE  
Longford Park, Banbury  
Phase 1 - Planting Plan 1 of 5

CLIENT  
Barratt Homes, Bovis & Taylor Wimpey Homes

SCALE	DATE	DRAWN
1:250@A1	JUL 2013	CW

DRAWING NUMBER	REVISION
5205/ASP.1.1	F

Based on Architects drawing C1618 P001 D