

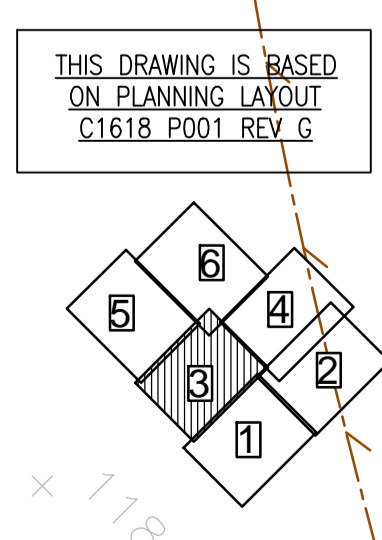


- ### General Notes
- Do not scale this drawing.
  - This drawing is to be read in conjunction with all other relevant Engineers, Architects and specialist design drawings and details.
  - All dimensions are in metres unless noted otherwise. All levels are in metres unless noted otherwise.
  - Any discrepancies noted on site are to be reported to the Engineer immediately.
  - All drainage works shall be carried out in accordance with Sewers for Adoption 8th edition.
  - The Contractor shall check all tie-ins for line and level with existing before commencing any works. The Engineer shall be notified immediately in writing, should any errors be found.
  - It is the responsibility of the Contractor to locate any service apparatus in the vicinity of the works. The client will accept no claims whatsoever in respect of any losses or damage caused in respect of such apparatus, however caused.
  - It is the responsibility of the Contractor to execute the works at all times in strict accordance with the requirements of the Health and Safety at Work Act 1974, and the C.D.M. Regulations 2007. The Contractor will be deemed to have allowed for full compliance, including full liaison with the CDM Co-ordinator, within his rates.
  - The Contractor is responsible for ensuring that all works are to the satisfaction of the Engineer, and shall be deemed to have included within his rates for any necessary testing.
  - The Contractor will be responsible for providing all necessary de-watering and trench support to execute the works in a satisfactory manner, and shall be deemed to have allowed for the same within his rates.
  - All buried concrete products and mortar shall be made using sulphate resisting cement.
  - All materials for use in the contract must be BS kitemarked.
  - All lifting eyes in P.C.C. products shall be pointed smooth after fixing.
  - For highway & drainage longitudinal sections refer to drg no. 20488\_02\_157 - 162.
  - All guttering assumed to be polypropylene or similar. Max roof area drained to be no more than 120m<sup>2</sup> for end pipes and 240m<sup>2</sup> for center pipes. Guttering to have 1:600 fall.

### Key

- Adoptable surface water sewer, S104 Water Industry Act (manhole ref, invert level, pipe diameter and manhole diameter shown)
- Adoptable foul sewer, Section 104 Water Industry Act (manhole ref, invert level, pipe diameter and manhole diameter shown)
- Adoptable foul rising main, Section 104 Water Industry Act
- Adoptable highway drain (S38 Highways Act) (manhole ref, invert level, pipe diameter and manhole diameter shown)
- Private lateral connection to adoptable sewer (connect soffit to soffit)
- 450mm dia x 900mm deep trapped road gully grating and 150mm<sup>2</sup> gully connection (see drg no. 20488\_02\_166)
- Private surface water drain & 460<sup>mm</sup> inspection chamber (invert levels and pipe diameters shown where not 100<sup>mm</sup>)
- Private yard gully and drain
- Private rodding eye (invert level shown)
- Aco type linear drainage channel to garage
- Private foul drain & 460<sup>mm</sup> inspection chamber (invert levels and pipe diameters shown where not 100<sup>mm</sup>)
- 300mm<sup>2</sup> inspection chamber, max 0.6m deep and max 3 incoming connections
- External wall where showing more than 150mm brickwork (eg. 4c = maximum of 4 courses plus 150mm)
- External wall protected by means of tanking face brickwork to 150mm above retention level
- Proposed level
- Site boundary
- Slab on edge (example shows max. height of 0.30m)

REV:	AMENDMENTS:	DRN:	CHK:	DATE:
PROJECT: LONGFORD PARK BODICOTE BANBURY				
DRAWING TITLE: PHASE 1 ENGINEERING LAYOUT SHEET 3 OF 6				
CLIENT: BARRATT HOMES, BOVIS HOMES TAYLOR WIMPEY				
DRAWING NUMBER: 20488_02_152				
REVISION:	SHEET SIZE:	DATE:		
	A1	04.10.13		
DRAWN BY:	CHECKED BY:	SCALE:		
MJK	EM	1:200		



THIS DRAWING IS BASED ON PLANNING LAYOUT 21618 POOL REV G