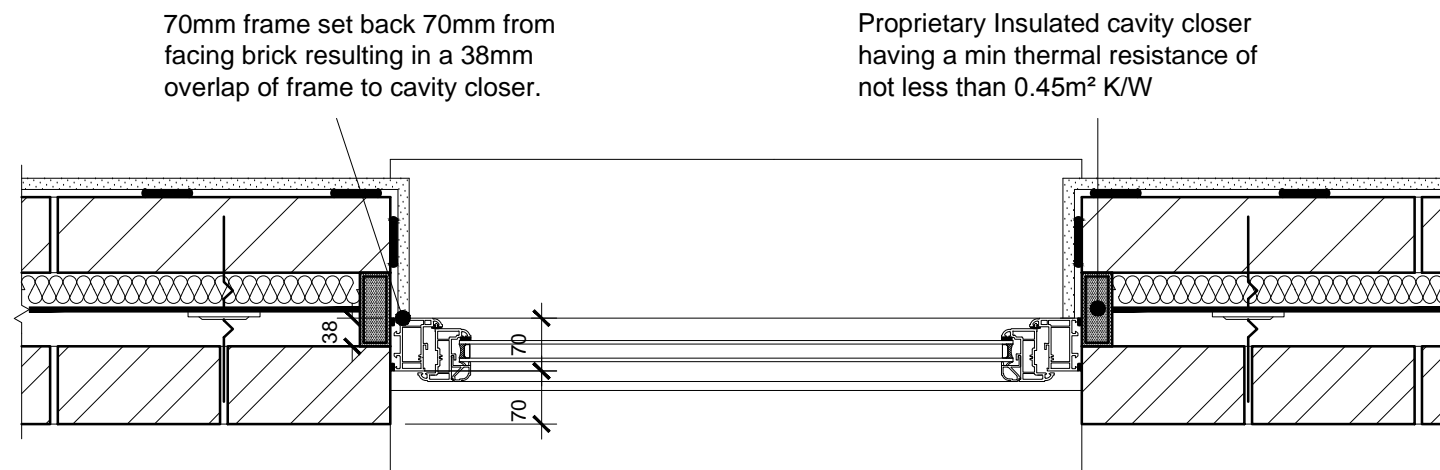


**NB: ALL WINDOWS
TO BE WHITE UPVC**

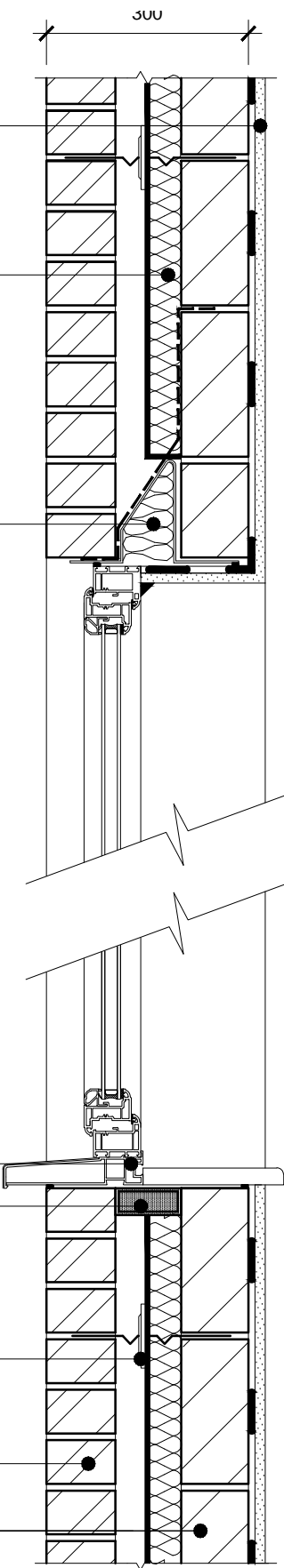


PLAN - WINDOW JAMB

12.5mm Gyproc Wallboard (density 8kg/m³) with with 3mm skim finish or taped and jointed on 10mm plaster dabs on blockwork.

100mm cavity partially insulated with Thermal Economics 50mm 'Platinum' Board.

Lintel to be fully insulated and not have a continuous base plate



Min frame overlap of 30mm

Proprietary Insulated cavity closer having a min thermal resistance of not less than 0.45m² K/W

Thermal Economic Wall ties @750mm c/s horz, & 450mm c/s vert. staggered

102.5mm brick outer leaf

100mm 3.6N Celcon Blook - 0.11W/mk

SECTION

**H+H Refs: 11/034/ LN01 - EW01
11/034/ RV01 - EW01
11/034/ SN01 - EW01**



Group Design & Technical Department
Barratt House
City West Business Park
Scotswood Road
NEWCASTLE UPON TYNE
NE4 7DF
Tel: 0191 298 6100
Fax: 0191 256 8324

House Type Code

Barratt 2010 Details

2010 Range - 'Core' Details

WARNING TO HOUSE-PURCHASERS. Property Misdescriptions Act 1991.
Buyers are warned that this is a working drawing and the contents of this drawing may be subject to change at any time and alterations and variations can occur during the progress of the build process. As such the layout, form, content and dimensions of the finished construction may differ materially from those shown. Whilst we make every effort to ensure our drawings are up to date there may from time to time be an unavoidable delay in updating these due to changes in regulations and/or re-planning. Purchasers are advised to check with the Sales Adviser whether any alterations have been made to this drawing. The contents of this drawing do not constitute a contract, part of any contract or warranty.

TYPICAL WINDOW DETAIL

| | | |
|------------|-----------|-------------------|
| Date | JUNE 2011 | 2010/DET/110 |
| Drawn by | GDT | |
| Checked by | GDT | Scale 1 : 10 @ A3 |
| Revision | A | |