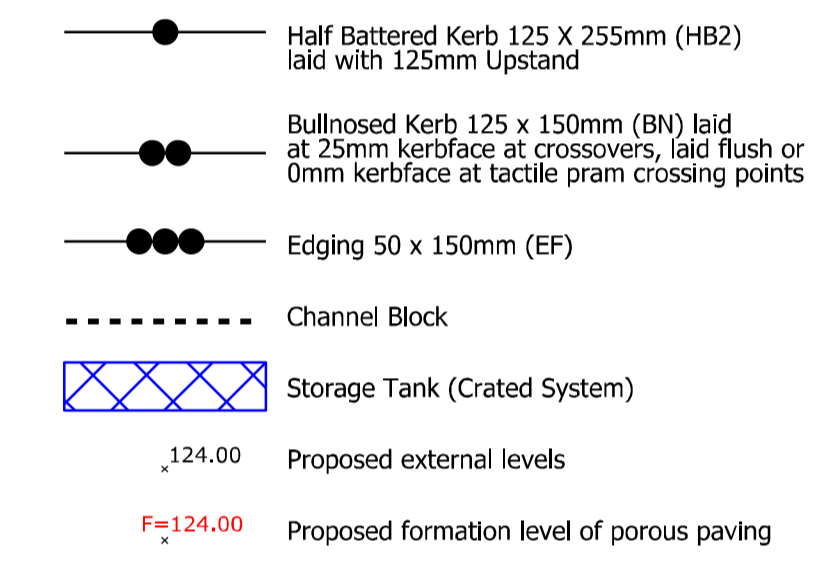
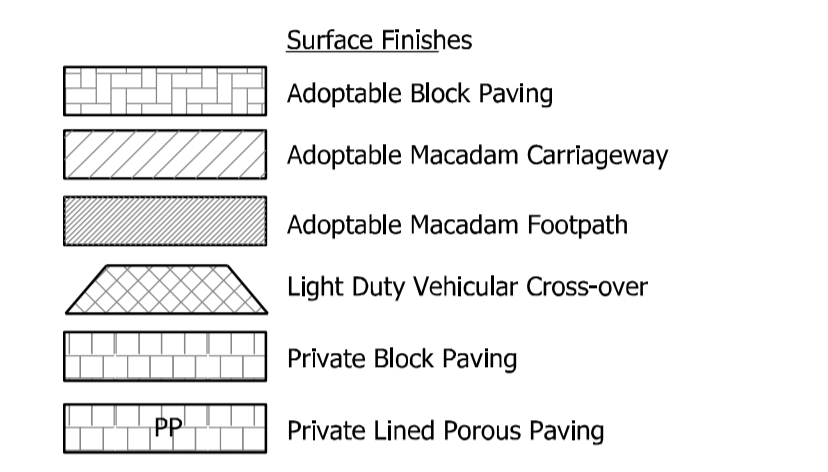
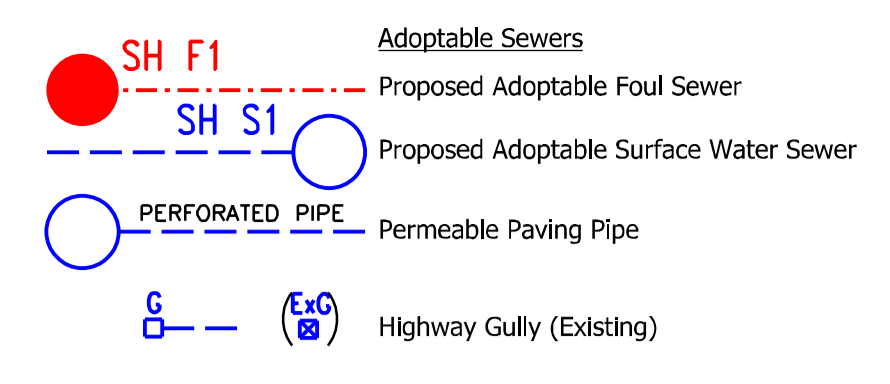


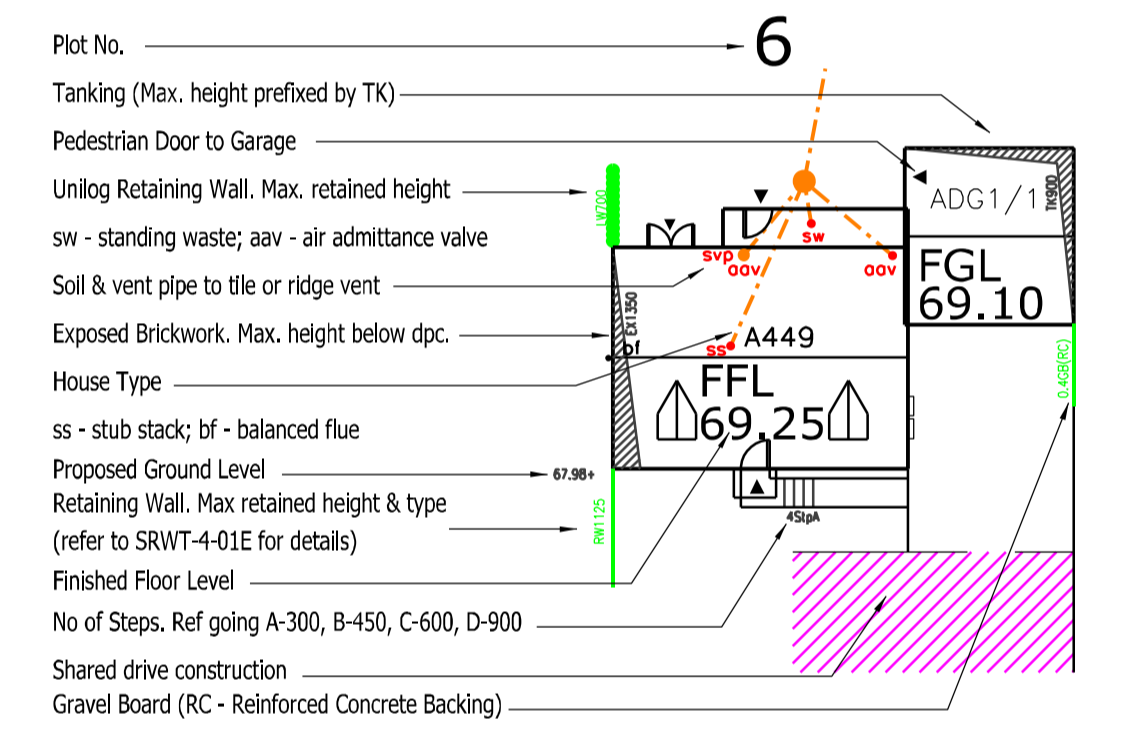
FOR CAMP ROAD DESIGN
SEE DRAWINGS
HEYF-5-556 TO HEYF-5-559

500mm WIDE GABION
BASKET WITH SOLID
CORE & 50mm PIPE LAID
AT BASE OF SWALE



Proposed external levels
F=124.00 Proposed formation level of porous paving

- Notes
- All levels relate to Ordnance Datum.
 - For adoptable roads and sewer details refer to drawings 601 and 602.
 - For road long sections refer to drawing 603.
- Building Drainage
- All connections to adoptable manholes from private building drainage to be 150mm diameter pipes unless otherwise specified.
 - All private drainage products are to be Polypipe or similar approved.
 - Pipe bedding material is to be Class B with 150mm minimum thickness surround.
 - Backfill is to be with selected fill free of stones larger than 40mm, lumps of clay over 100mm, timber, frozen material and vegetable matter.
 - Pipe protection of house drainage runs is required in accordance with the Typical House Drainage Details drawing. The contractor shall satisfy themselves and agree with the Site Management the actual extent of pipe protection required.
 - Pipes entering and leaving manholes/inspection chambers shall include a rocker pipe, 600mm in length.
 - Brickwork to chambers shall be Class B Engineering to BS3921.
 - Rainwater pipes are to be sited on side elevations whenever possible.
- Regrade
- All retaining walls with a height of 600mm or greater are to include 1.2m high post and rail fencing unless located in rear gardens. Similar retaining walls in rear gardens are to include 900mm height picket fence.
 - All flights of steps to primary level access, with more than 2 steps are to be provided with handrailing, except where the steps are 900mm or more apart.
 - Brick retaining walls are to be used in preference to gravel boards for front garden areas.
- General
- Drainage and road design subject to Water and Highway Authority approval.
 - Edge restraint to private/blockwork - 2 stretcher course



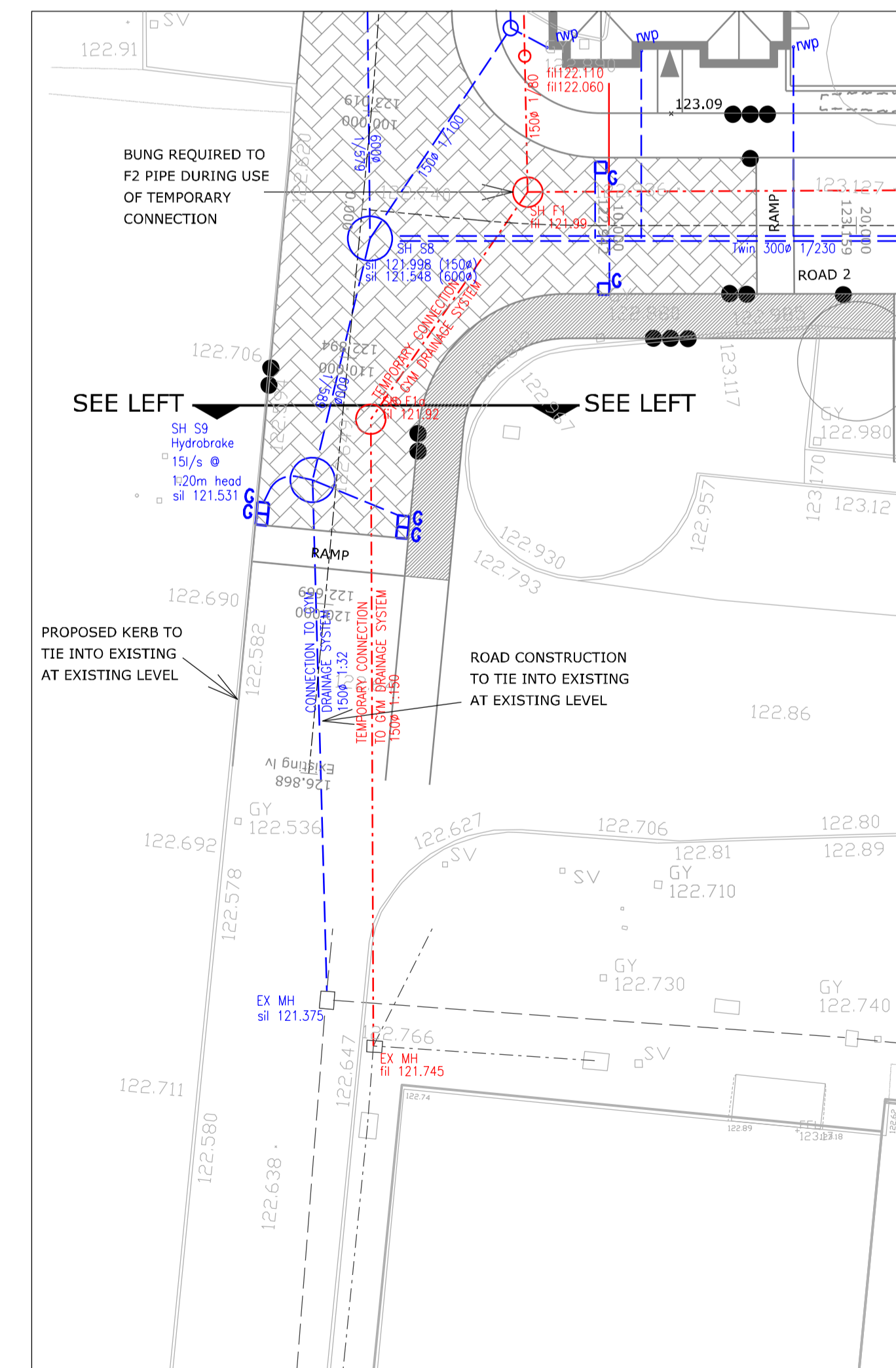
THIS LAYOUT SHOULD BE USED FOR

- All adoptable sewer and highway works - position and levels
- All private building drainage - position and levels
- All regrade and retaining works - position and levels
- Road names and postal numbers
- Street lighting and other furniture/signage

THIS LAYOUT SHOULD NOT BE USED FOR

- Fencing and drive positions or materials
- Private slabbing paths or areas
- House types and positions

UNTIL TECHNICAL APPROVAL HAS BEEN OBTAINED FROM THE RELEVANT AUTHORITIES, ALL DRAWINGS ARE ISSUED AS PRELIMINARY AND NOT FOR CONSTRUCTION. SHOULD THE CONTRACTOR COMMENCE SITE WORK PRIOR TO APPROVAL BEING GIVEN IT IS ENTIRELY AT HIS OWN RISK.



Revision	Description	Drawn	Checked	Date
L	Plot 2-5 parking court amended to suit latest layout	AT	JF	23.10.13
K	Plot 6 FFL raised, porous paving formation levels added, visitors parking shown as adoptable, chamber added downstream of tank and S7 removed	AT	JF	17.10.13
J	Scheme updated to suit latest layout, client comments and existing drainage information	AT	JF	16.10.13
H	Adoptable path added to West of swale and drive changed to porous paving	AT	JF	09.10.13
G	Foul within Highway upsized to 1500 at Client request	SD	JF	04.10.13
F	Amendments to drainage design	SD	JF	02.10.13
E	Revised to suit latest site layout	SD	JF	27.09.13
D	Revised to suit latest site layout	AT	JF	10.09.13
C	Chamber references added	AT	JF	15.08.13
B	Road centreline levels added and extent of road amended	AT	JF	10.06.13
A	Latest layout and drainage design shown	AT	JF	04.06.13

Woods Hardwick
Architects, Engineers and Development Consultants

15-17 Goldington Road
Bedford MK40 3JH
United Kingdom
T. +44 (0)1234 268862
F. +44 (0)1234 353034
mail@woodsardwick.com
www.woodsardwick.com

Title: UPPER HEYFORD

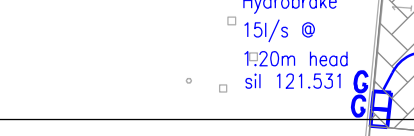
Details: BOVIS SHOW HOMES
ENGINEERING LAYOUT

Scale: 1:200 @ A1 Date: Dec 2012 Drawn: JGF Chk: IDB

HEYF-5-600 L

BUNG REQUIRED TO F2 PIPE DURING USE OF TEMPORARY CONNECTION

SEE INSET



SEE INSET