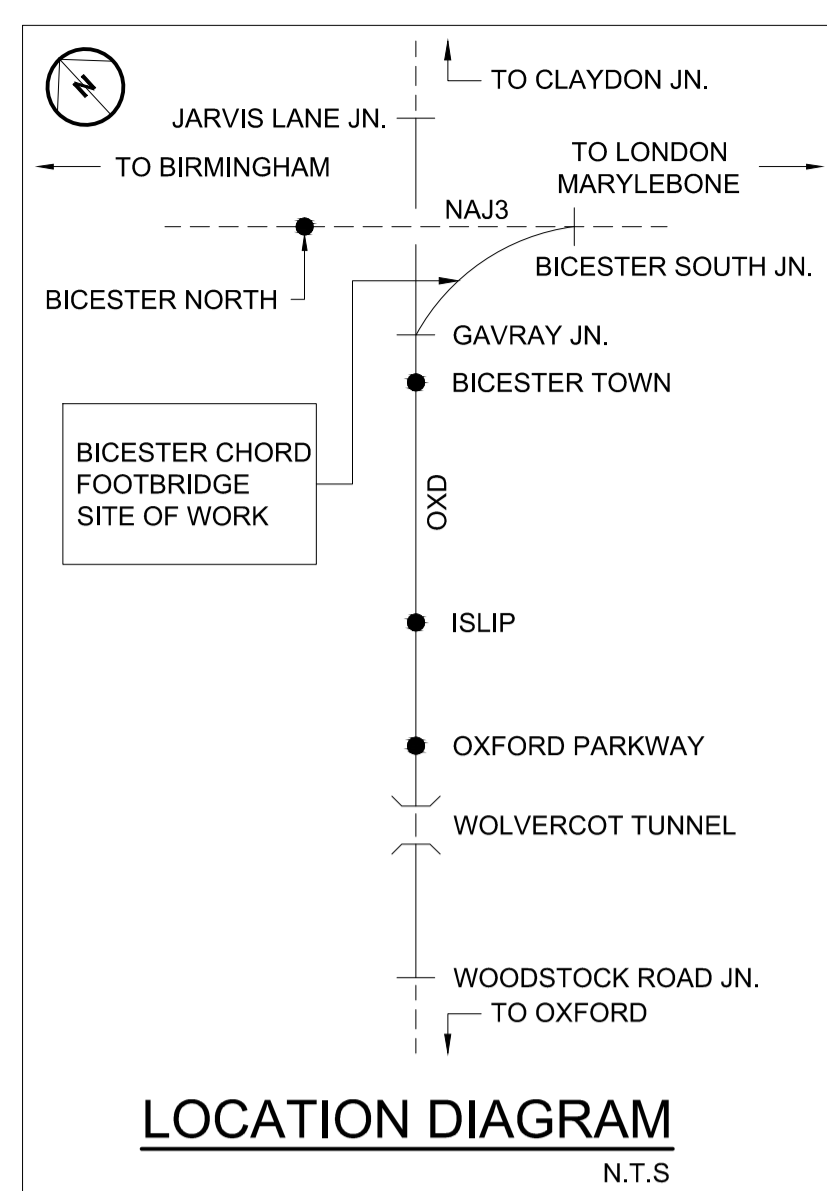
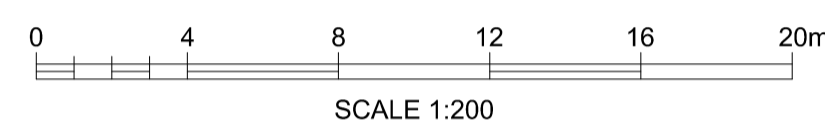


PLAN



SAFETY, HEALTH & ENVIRONMENTAL INFORMATION OUTLINE:

- "B2" - IF EMBANKMENT CONSTRUCTED PRIOR TO FOOTBRIDGE : CONTRACTOR TO ENSURE THE STABILITY OF THE EXCAVATION NEAR TRACK TO AVOID COLLAPSE OF EXCAVATIONS UNDERMINING TRACK, PROVIDING SUITABLE SHEET PILING OR ANY OTHER TEMPORARY SHORING ARRANGEMENT.
- "B3" - IF FOOTBRIDGE CONSTRUCTED PRIOR TO EMBANKMENT: CONTRACTOR TO ENSURE NO DAMAGE TO FOOTBRIDGE FROM HEAVY PLANT.

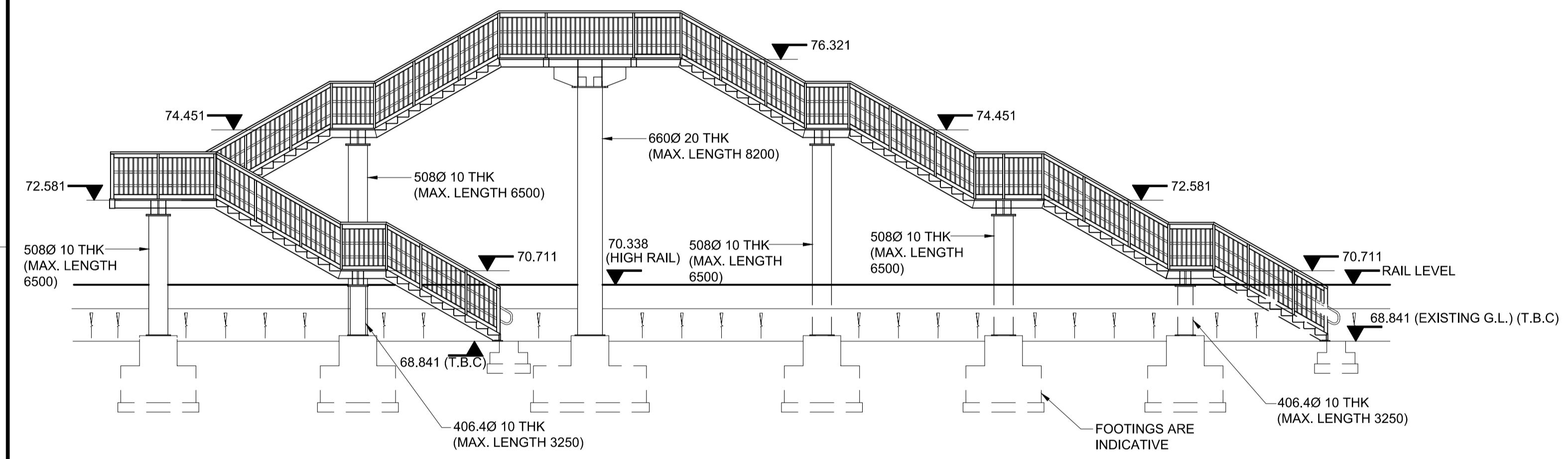
SCHEDULE OF LEVELS		
LANDING	TYPE	LEVEL
E1	STAIR - STEEL	70.711
E2	STAIR - STEEL	72.581
E3	STAIR - STEEL	74.451
E4	STAIR - STEEL	76.321
E5	STAIR - STEEL	74.451
E6	STAIR - STEEL	72.581
E7	STAIR - STEEL	70.711

SCHEDULE OF FLIGHTS			
TRAVEL	FLIGHT	No. OF RISERS	LOCATION
GL - E1	FLIGHT - 1	11	SOUTH SIDE
E1 - E2	FLIGHT - 2	11	
E2 - E3	FLIGHT - 3	11	
E3 - E4	FLIGHT - 4	11	NORTH SIDE
E4 - E5	FLIGHT - 5	11	
E5 - E6	FLIGHT - 6	11	
E6 - E7	FLIGHT - 7	11	
E7 - GL	FLIGHT - 8	11	

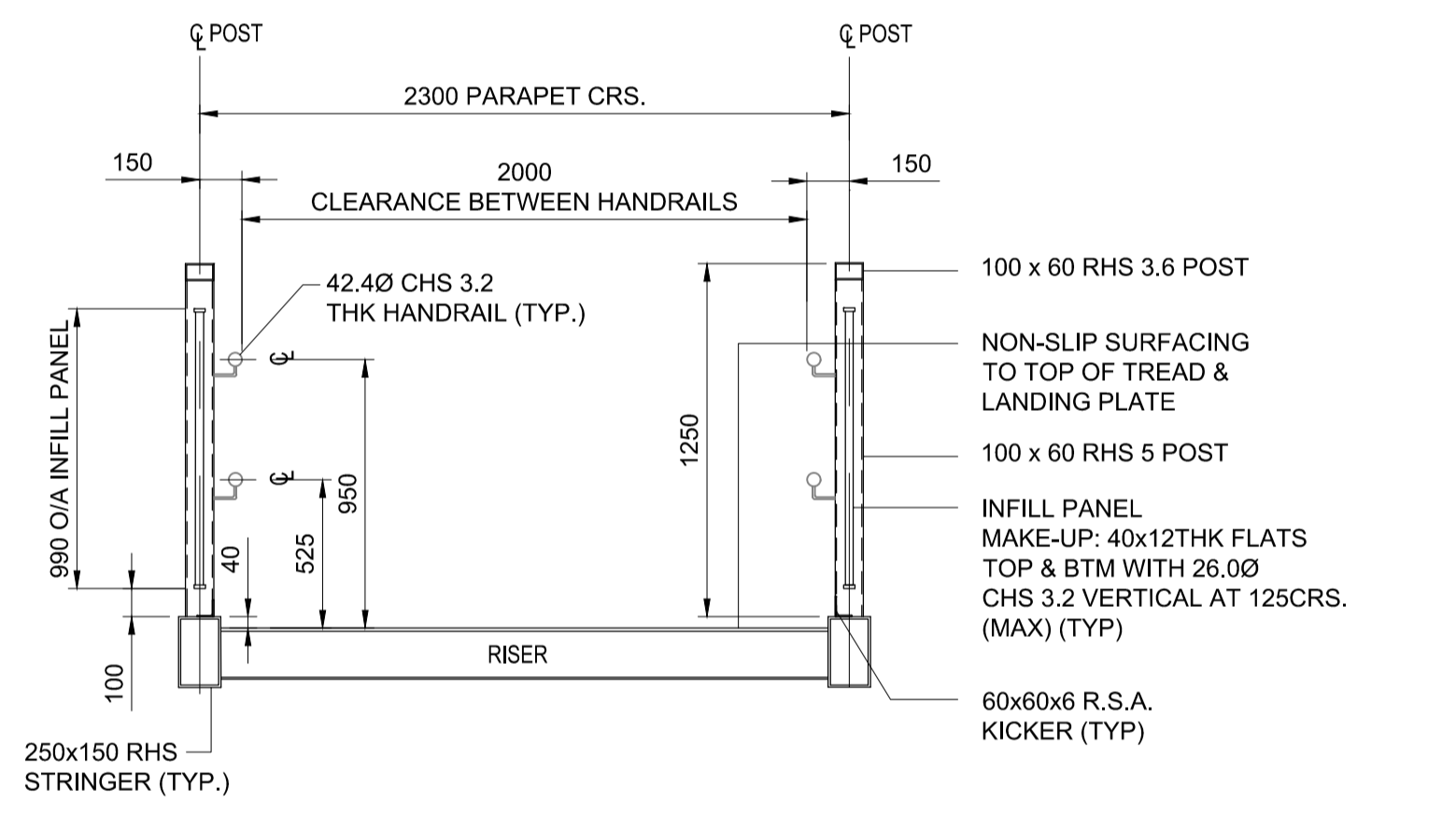
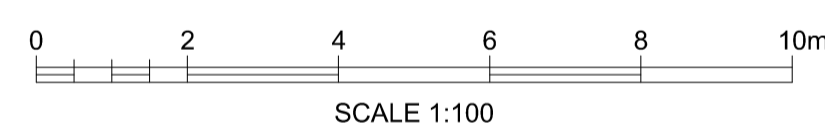
STEP DETAILS	
RISER	170
GOING	300

- Legend/Notes**
- FOR SITE PLAN SEE DRAWING No. 5114534-ATK-DRG-CV-008102.
 - ALL DIMENSIONS IN MILLIMETRES UNLESS NOTED OTHERWISE.
 - ALL LEVELS ARE IN METRES ABOVE THE EAST WEST RAIL PHASE 1 PROJECT LEVEL DATUM.
 - BASIS OF DRAWING - AERIAL SURVEY DATED AUGUST 2009.
 - TRACK ALIGNMENT SHOWN IS BASED ON THE ALIGNMENT PRODUCED BASED ON THE ORIGINAL AERIAL SURVEY AND DATING FROM 12.08.2009 BUT WITH LEVELS CONFIRMED ON 16.10.2012. THE SETTING OUT WILL BE ADJUSTED TO TAKE ACCOUNT OF THE FINAL TRACK ALIGNMENT AT DETAILED DESIGN.
 - EXISTING UNMADE FOOTPATHS SEVERED BY PROPOSED CHORD TO BE GRUBBED UP AND/OR VEGETATION PLANTED TO DISCOURAGE THEIR CONTINUED USE AND POTENTIAL TRESPASS.
 - FOOTBRIDGE SUPERSTRUCTURE TO BE AS PER NETWORK RAIL STANDARD DESIGN REFERENCE NR/SD/CIV/400 SERIES.
 - STEELWORK GRADES TO BE AS SHOWN ON STANDARD DESIGN.
 - CONCRETE GRADE TO BE C40/50. CONCRETE DESIGN CHEMICAL CLASS IS TO BE CONFIRMED.
 - PROTECTIVE COATING TO BE NETWORK RAIL SYSTEM N1 (EPOXY MIO OVER ALUMINIUM METAL SPRAY). FINAL COLOUR TO BE HOLLY GREEN: 14C39 TO BS 4800.
 - SURFACING TO BE PROPRIETARY NON-SLIP WATER PROOF SYSTEM.
 - PASSIVE PROVISION IS TO BE MADE FOR A FUTURE RAMP. THE RELEVANT LANDING DETAIL IS TO BE UTILISED AT THE ENDS OF THE MAIN SPAN.
 - ALL EXPOSED METALLIC PARTS WILL BE DETAILED WITH BONDING LUGS OR STUDS TO ALLOW FOR FUTURE PROVISION OF OVERHEAD LINE ELECTRIFICATION. WHERE MINOR ELEMENTS SUCH AS HANDRAILS ARE INDICATED AS METALLIC, WHEREVER POSSIBLE CONSIDERATION WILL BE GIVEN AT DETAILED DESIGN FOR USE OF ALTERNATIVE NON-CONDUCTIVE MATERIALS
 - ABBREVIATIONS:

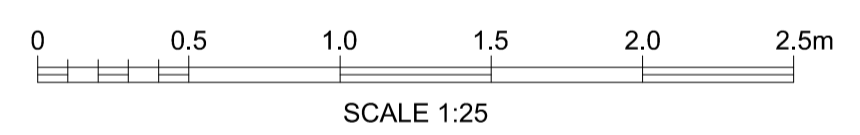
G.L. = GROUND LEVEL	TYP. = TYPICAL
THK. = THICK	MIN. = MINIMUM
MAX. = MAXIMUM	CRS. = CENTRES
T.B.C = TO BE CONFIRMED	O/A = OVERALL



ELEVATION A-A



SECTION C-C



Rev	Date	Description of Revisions	Drawn	Chkd	Appr
P01	03/05/13	FOR PLANNING	ST	JG	DS

FOR PLANNING



Contractor(s)

ATKINS

The Axis
10 Holliday Street
Birmingham
West Midlands
B1 1TF

Tel: +44 (0)121 483 5000
Fax: +44 (0)121 483 6333

Project

EAST WEST RAIL PHASE 1

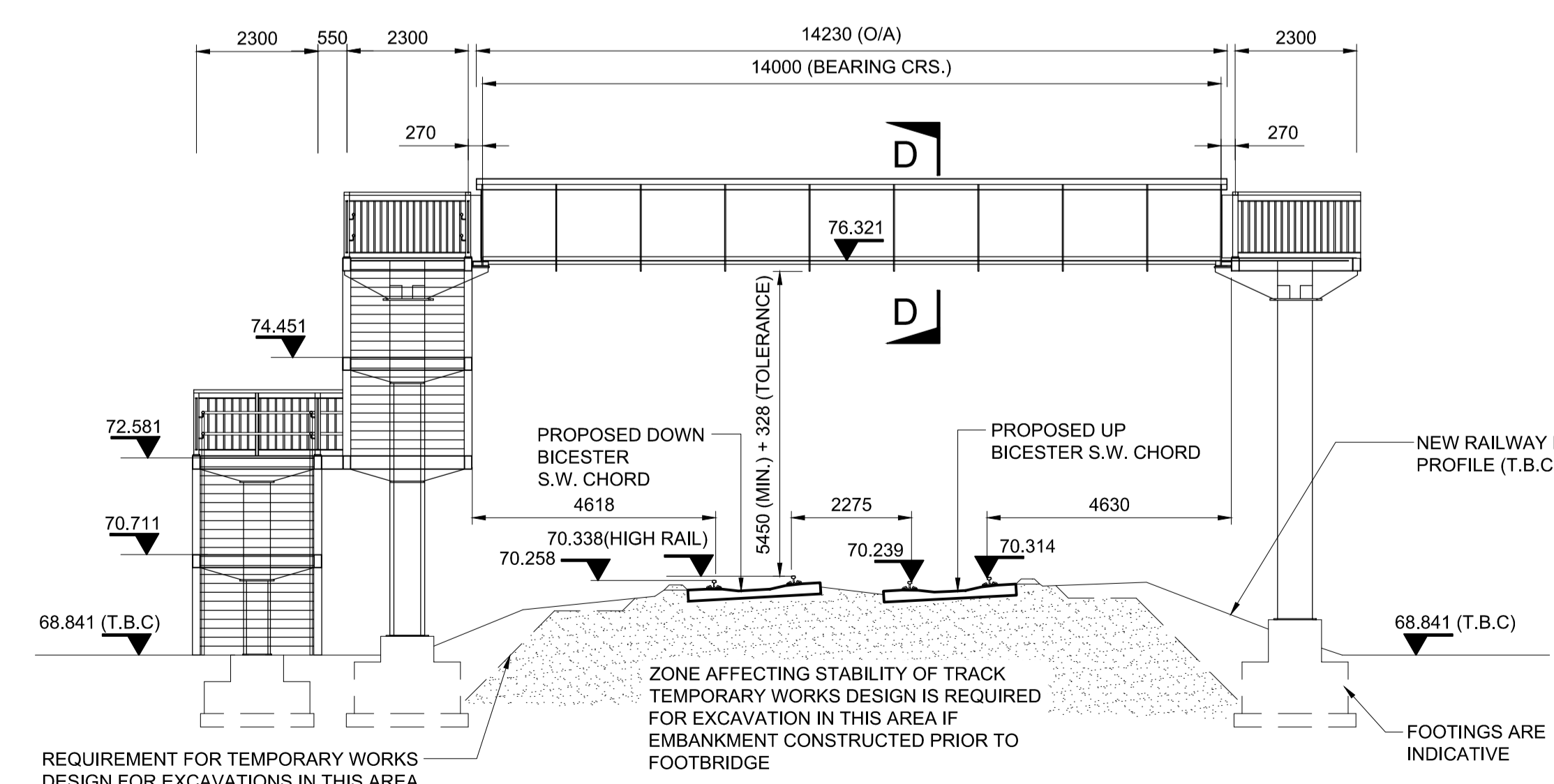
Drawing Title

BICESTER CHORD FOOTBRIDGE PLANNING - 1 OF 2 GENERAL ARRANGEMENT

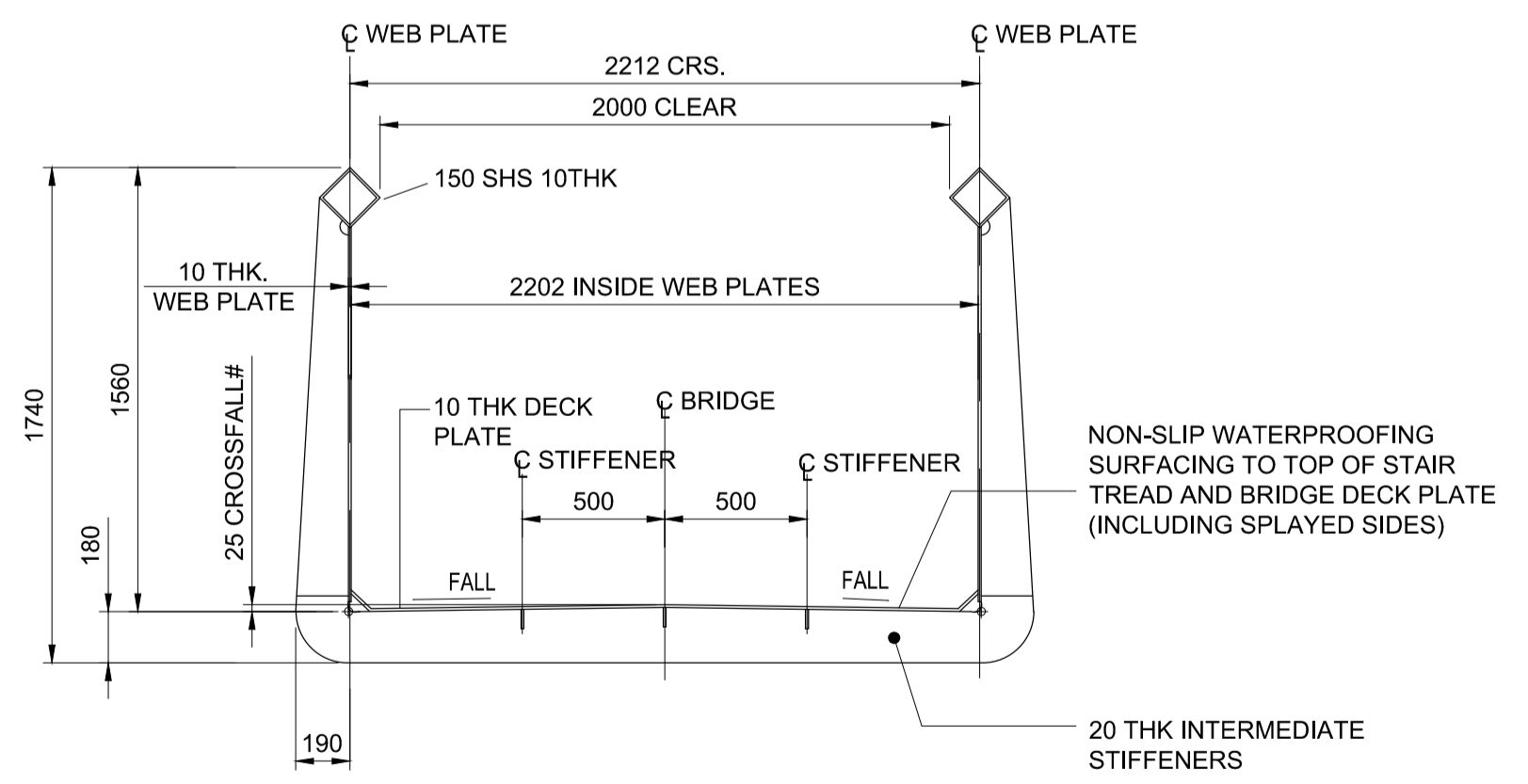
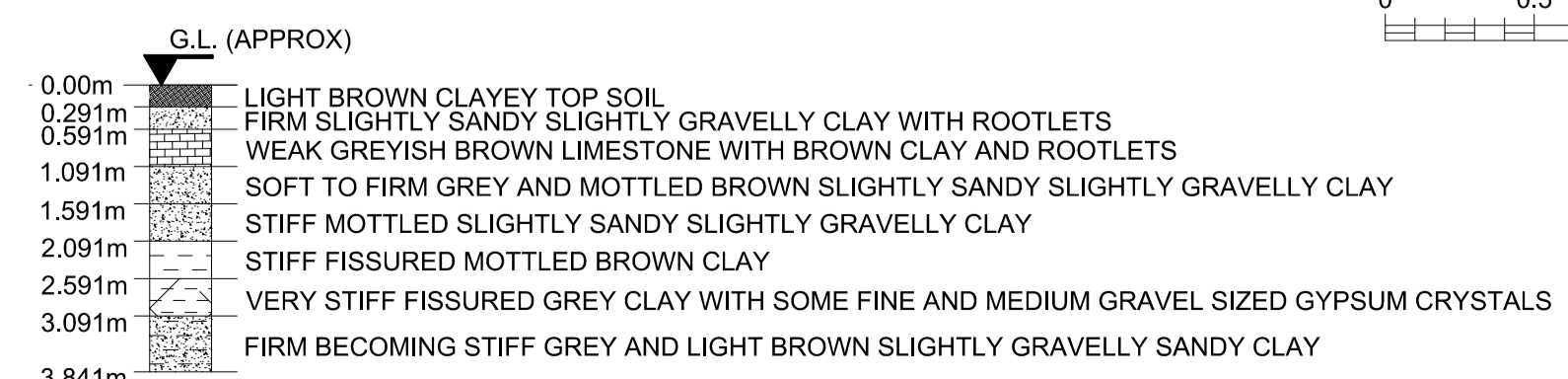
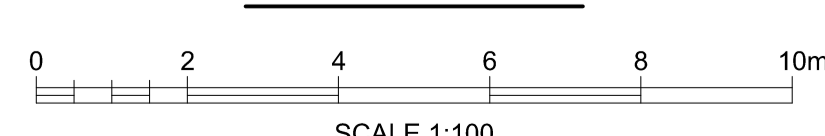
Designed	D.STEER	Signed	03/05/2013 15:45:30	Date	03/05/2013
Drawn	S.TOLLEY	Signed	ST	Date	03/05/2013
Checked	J.GREEN	Signed		Date	03/05/2013
Approved	D. STEER	Signed		Date	03/05/2013

Scale(s) AS SHOWN AT A1 ELR & Mileage BSG 08m 61ch

Alternative Reference Drawing Number 5114534-ATK-DRG-CV-008101 Sheet 1 of 2 Revision P01



SECTION B-B



SECTION D-D

